



King's Research Portal

DOI:

[10.1007/s00213-018-4997-2](https://doi.org/10.1007/s00213-018-4997-2)

Document Version

Peer reviewed version

[Link to publication record in King's Research Portal](#)

Citation for published version (APA):

McQueen, G., Lally, J., Collier, T., Zelaya, F., Lythgoe, D. J., Barker, G. J., Stone, J. M., McGuire, P., MacCabe, J. H., & Egerton, A. (2018). Effects of N-acetylcysteine on brain glutamate levels and resting perfusion in schizophrenia. *Psychopharmacology*, 1-10. <https://doi.org/10.1007/s00213-018-4997-2>

Citing this paper

Please note that where the full-text provided on King's Research Portal is the Author Accepted Manuscript or Post-Print version this may differ from the final Published version. If citing, it is advised that you check and use the publisher's definitive version for pagination, volume/issue, and date of publication details. And where the final published version is provided on the Research Portal, if citing you are again advised to check the publisher's website for any subsequent corrections.

General rights

Copyright and moral rights for the publications made accessible in the Research Portal are retained by the authors and/or other copyright owners and it is a condition of accessing publications that users recognize and abide by the legal requirements associated with these rights.

- Users may download and print one copy of any publication from the Research Portal for the purpose of private study or research.
- You may not further distribute the material or use it for any profit-making activity or commercial gain
- You may freely distribute the URL identifying the publication in the Research Portal

Take down policy

If you believe that this document breaches copyright please contact librarypure@kcl.ac.uk providing details, and we will remove access to the work immediately and investigate your claim.

Effects of N-acetylcysteine on brain glutamate levels and resting perfusion in schizophrenia

Grant McQueen^{1*}, John Lally^{1,2}, Tracy Collier¹, Fernando Zelaya³, David J. Lythgoe³, Gareth J. Barker³, James M. Stone^{1,4}, Philip McGuire¹, James H. MacCabe¹, Alice Egerton¹.

¹Department of Psychosis Studies, Institute of Psychiatry, Psychology & Neuroscience, King's College London, De Crespigny Park, London, UK; ² Department of Psychiatry, Royal College of Surgeons in Ireland, Dublin, Ireland; ³Department of Neuroimaging, Centre for Neuroimaging Sciences, Institute of Psychiatry, Psychology & Neuroimaging, King's College London, De Crespigny Park, London, UK; ⁴Experimental Medicine, Imperial College London, Hammersmith Hospital, London, UK

*Correspondence: Grant McQueen, Department of Psychosis Studies, Institute of Psychiatry, Psychology and Neuroscience, King's College London, De Crespigny Park, London SE5 8AF, UK. Tel: +1 44 207 848 0774, Fax: +1 44 207 848 0976, E-mail: grant.mcqueen@kcl.ac.uk

Funding and Disclosure

This study presents independent research funded in part by the National Institute for Health Research (NIHR), Biomedical Research Centre at South London and Maudsley National Health Service (NHS) Foundation Trust and King's College London. GJB receives honoraria for teaching from General Electric Healthcare, who also part fund a PhD studentship. GJB acts as a consultant for IXICO. PM has received consultancy payment for Sunovion and Takeda.

Acknowledgements

This study was supported by the United Kingdom Clinical Research Collaboration-registered King's Clinical Trials Unit at King's Health Partners, which is part funded by the NIHR Biomedical Research Centre for Mental Health at South London and Maudsley NHS Foundation Trust and King's College London and the NIHR Evaluation, Trials and Studies Coordinating Centre.

ABSTRACT

Rationale: N-acetylcysteine (NAC) is currently under investigation as an adjunctive treatment for schizophrenia. The therapeutic potential of NAC may involve modulation of brain glutamate function, but its effects on brain glutamate levels in schizophrenia have not been evaluated.

Objectives: The aim of this study was to examine whether a single dose of NAC can alter brain glutamate levels. A secondary aim was to characterise its effects on regional brain perfusion.

Methods: In a double-blind placebo-controlled crossover study, nineteen patients with a diagnosis of schizophrenia underwent two MRI scans, following oral administration of 2400mg NAC or matching placebo. Proton magnetic resonance spectroscopy was used to investigate the effect of NAC on glutamate and Glx (glutamate plus glutamine) levels scaled to creatine (Cr) in the anterior cingulate cortex (ACC) and in the right caudate nucleus. Pulsed continuous arterial spin labeling was used to assess the effects of NAC on resting cerebral blood flow (CBF) in the same regions.

Results: Relative to the placebo condition, the NAC condition was associated with lower levels of Glx/Cr, in the ACC ($P < 0.05$), but not in the caudate nucleus. There were no significant differences in CBF in the NAC compared to placebo condition.

Conclusions: These data provide preliminary evidence that NAC can modulate ACC glutamate in patients with schizophrenia. In contrast, physiological effects of NAC on the brain were not detectable as between session changes in rCBF. Future studies assessing the effects of a course of treatment with NAC on glutamate metabolites in schizophrenia are indicated.

Keywords: Schizophrenia, glutamate, n-acetylcysteine, magnetic resonance spectroscopy, arterial spin labelling, anterior cingulate cortex.

INTRODUCTION

Approximately two thirds of patients with schizophrenia show a suboptimal symptomatic response to standard antipsychotic administration (Meltzer 1997; Lindenmayer 2000). There are substantial on-going efforts to develop alternative pharmacological interventions for this group, with a major focus on compounds that can modulate glutamatergic neurotransmission (Buchanan et al. 2007; Kinon and Gómez 2013; Bugarski-Kirola et al. 2016, 2017). The ability of such compounds to modulate glutamate levels can be tested in animal models during early stages of drug development (Moghaddam and Krystal 2012), but it is not known whether similar effects occur in patients with schizophrenia. This lack of studies evaluating target engagement in man is a major limiting factor in glutamatergic drug development for schizophrenia (Javitt et al. 2018).

N-Methyl-D-Aspartate (NMDA) receptor antagonists, such as phencyclidine or ketamine, produce effects that resemble the symptoms of schizophrenia in man (Javitt and Zukin 1991; Krystal et al. 1994) and increase glutamate metabolite levels in frontal cortical brain areas (Moghaddam et al. 1997; Rowland 2005; Stone et al. 2012; Javitt et al. 2018). On this basis, glutamatergic theories of schizophrenia predict an elevation in cortical glutamate, and accordingly a therapeutic potential for compounds that can facilitate NMDA function and decrease glutamate release (Moghaddam and Javitt 2012).

Brain glutamate concentrations can be measured in man using localised proton magnetic resonance spectroscopy (^1H -MRS). This approach estimates concentrations of glutamate (Glu), its metabolite glutamine (Gln), and the combined measure of glutamate plus glutamine (Glx) in a pre-specified region of interest. ^1H -MRS studies in people with schizophrenia or psychosis compared to healthy volunteers have reported both increases and decreases in regional glutamate levels, which may reflect illness stage, medication effects or other methodological factors (Merritt et al. 2016). Recent studies indicate that glutamate levels in the anterior cingulate cortex (ACC) or striatum may be particularly elevated in patients who remain unwell after conventional antipsychotic treatment, compared to patients who have responded well (Egerton et al. 2012; Demjaha et al. 2014; Goldstein et al. 2015; Mouchlianitis et al. 2016). These findings may suggest that in patients who remain unwell despite antipsychotic treatment, elevated glutamatergic concentration in tissue is not reduced by conventional antipsychotic medication (Egerton et al. 2017), and that adjunctive interventions that can reduce glutamate levels may benefit this group. Evaluation of the

ability of a glutamatergic compound to reduce $^1\text{H-MRS}$ glutamate levels in schizophrenia may therefore provide a biomarker of target engagement, which could be used to facilitate clinical trials.

One compound which is currently under investigation for this purpose is N-acetylcysteine (NAC), which can decrease neuronal glutamate release (Anwyl 1999). In rats, PCP-stimulated increases in frontal glutamate are blocked by NAC pre-treatment (Baker et al. 2002), which could indicate its potential for use as an antipsychotic drug. NAC is a precursor to the amino acid L-cysteine (Arakawa and Ito 2007) and its oxidised form L-cystine, which is thought to modulate extracellular glutamate levels through interaction with the cystine/glutamate antiporter, System x_c^- (Bridges et al. 2012a). System x_c^- exchanges extracellular L-cystine with intracellular L-glutamate, most notably across the membrane of glial cells (Bridges et al. 2012b). Glutamate transported into the extracellular space through System x_c^- activates extrasynaptic mGluR2/3 receptors (Baker et al. 2002; Xi et al. 2003; Mohan et al. 2011), to decrease neuronal glutamate release (Anwyl 1999). Accordingly, NAC's ability to attenuate phencyclidine-stimulated glutamate increases appears to be mediated by a mGluR2/3-mediated mechanism (Baker et al. 2002). The effects of NAC on $^1\text{H-MRS}$ measures of glutamate in people with schizophrenia have not been reported. However, in cocaine-dependent individuals, single dose NAC administration decreases ACC $^1\text{H-MRS}$ glutamate levels (Schmaal et al. 2012). This raises the possibility that NAC may also be able to decrease glutamate levels in patients with schizophrenia.

Another potential biomarker for antipsychotic efficacy may be drug-induced changes in regional brain activity, as measured through changes in resting regional cerebral blood flow (rCBF) due to the phenomenon of neuro-vascular coupling (Allen et al. 2016). Changes in rCBF have been observed after administration of single doses of antipsychotic compounds in both people with schizophrenia and in healthy volunteers (Lahti et al. 2003; Fernández-Seara et al. 2011; Handley et al. 2013; Shcherbinin et al. 2015). These studies have shown increases in CBF occurring in regions associated with the mechanism of action of the drug and relevant to schizophrenia, including the striatum, thalamus and ACC (Goozée et al. 2014). Arterial spin labelling (ASL) provides a modern MRI approach to measure rCBF, and is well-suited to examining the changes in brain activity arising after administration of single oral doses of centrally-acting compounds (Handley et al. 2013; Shcherbinin et al. 2015; Pollak et al. 2015). Changes in rCBF following NAC administration in regions previously associated with

schizophrenia pathophysiology (Goozée et al. 2014) or with antipsychotic response (Tost et al. 2010; Handley et al. 2013) could therefore also indicate therapeutic potential.

The primary aim of the current study was to determine whether a single dose of NAC compared to placebo decreases brain glutamate metabolites in schizophrenia. Using ¹H-MRS, we evaluated glutamate levels in the ACC and right caudate nucleus, the brain areas where an elevation in glutamate has been linked to a poor antipsychotic response (Egerton et al. 2012; Demjaha et al. 2014; Goldstein et al. 2015; Mouchlianitis et al. 2016), and where, in preclinical studies, the administration of NAC reduces glutamate levels (Baker et al. 2008; Durieux et al. 2015). The secondary aim was to use ASL to characterise the effects of NAC on rCBF in these regions, and to investigate whether these alterations are correlated with NAC-induced changes in glutamate metabolites.

METHODS

Participants and clinical measures

This study received ethical approval from the NRES London - Harrow NHS ethics committee and was registered on clinicaltrials.gov, study number NCT02483130.

Twenty participants meeting DSM-IV criteria for schizophrenia were recruited from outpatient services within the South London and the Maudsley NHS Foundation Trust. Data from previous studies (Egerton et al. 2012; Demjaha et al. 2014) indicated that a sample size of 18 would be required to detect a 15% within-subject difference in ACC glutamate at 80% power and an $\alpha = 0.05$, while a sample of 12 in each group provides 80% power to detect a 5% within-group difference in rCBF (Murphy et al. 2011; Handley et al. 2013).

Inclusion required written informed consent and good physical health, as determined by a physical health screen. Exclusion criteria included contraindications to MRI at 3 Tesla or contraindications to NAC administration, including pregnancy, history of asthma, seizure, and drug or alcohol dependency. The study excluded patients with current or previous NAC or clozapine use. Symptom severity was assessed during the health screen using the Positive and Negative Syndrome Scale (PANSS; (Kay and Qpjer 1982)), Clinical Global Impression-Severity (CGI-S; (Guy, 1976)), and functioning was assessed using Global Assessment of Functioning scale (GAF; (Hall 1995)).

Administration of N-acetylcysteine and placebo

The dose of NAC, and the time period between NAC administration and MRI scanning followed the previous study of Schmaal et al (2012), which detected decreases in glutamatergic measures one hour following 2400mg NAC administration in cocaine-dependent individuals, as peak plasma levels of NAC occur 1 – 2 hours after oral administration (Holdiness, 1991). This single dose is also similar to that used in repeated administration in clinical trials of NAC in schizophrenia (Berk et al. 2008; Farokhnia et al. 2013; Conus et al. 2018). The order of NAC and placebo administration was block randomised such that an equal number of participants received either NAC or placebo in the first visit. MRI sessions were performed exactly seven days apart and at the same time of day. The local pharmacy distributed blinded medication packs with visually identical appearing capsules for each session. Both the research team and the participants were blind to the order and nature of each administration.

Magnetic Resonance Imaging

MRI data were acquired on a 3 Tesla MR750 scanner (General Electric, Chicago, USA). The scanning session commenced with a localizer, standard Axial T2-weighted fast spin echo scan (TR / TE= 4380 / 55.72) and a T1-weighted structural scan (TR / TE = 7.312 / 3.01). The T1-weighted acquisition was used to plan ¹H-MRS voxel placement, and for calculation of ¹H-MRS voxel tissue content. ¹H-MRS spectra were acquired in 8 cm³ (2 x 2 x 2 cm³) voxels prescribed in the bilateral ACC and right caudate nucleus (Figure 1). Spectra were acquired using a conventional PRESS (Point RESolved Spectroscopy) acquisition with 96 averages, TR = 3000 ms and with a TE = 30 ms in the ACC (Egerton et al. 2012) and a TE = 35 ms in the caudate (De la Fuente-Sandoval et al. 2011). An additional 16 averages were acquired without water suppression for subsequent eddy current correction and water scaling. The acquisition used the standard GE PROBE (PROton Brain Examination) sequence with CHESS (CHEmically Selective Suppression) water suppression. For measurement of regional CBF, a 3D pseudo-continuous ASL (pCASL) acquisition was used. Arterial blood was labeled using a long (1.5s) train of adiabatic radio frequency pulses. After a post-labelling delay of 1.5s, perfusion images were acquired with a 3D Fast Spin Echo (FSE) stack-of-spirals multi-shot readout (TE/TR = 32 ms / 5500 ms; ETL= 64) (Dai et al. 2008; Handley et al. 2013). CBF maps were computed in physiological units of ml blood per 100mg of tissue per minute, with a voxel size of 1 x 1 x 3 mm³.

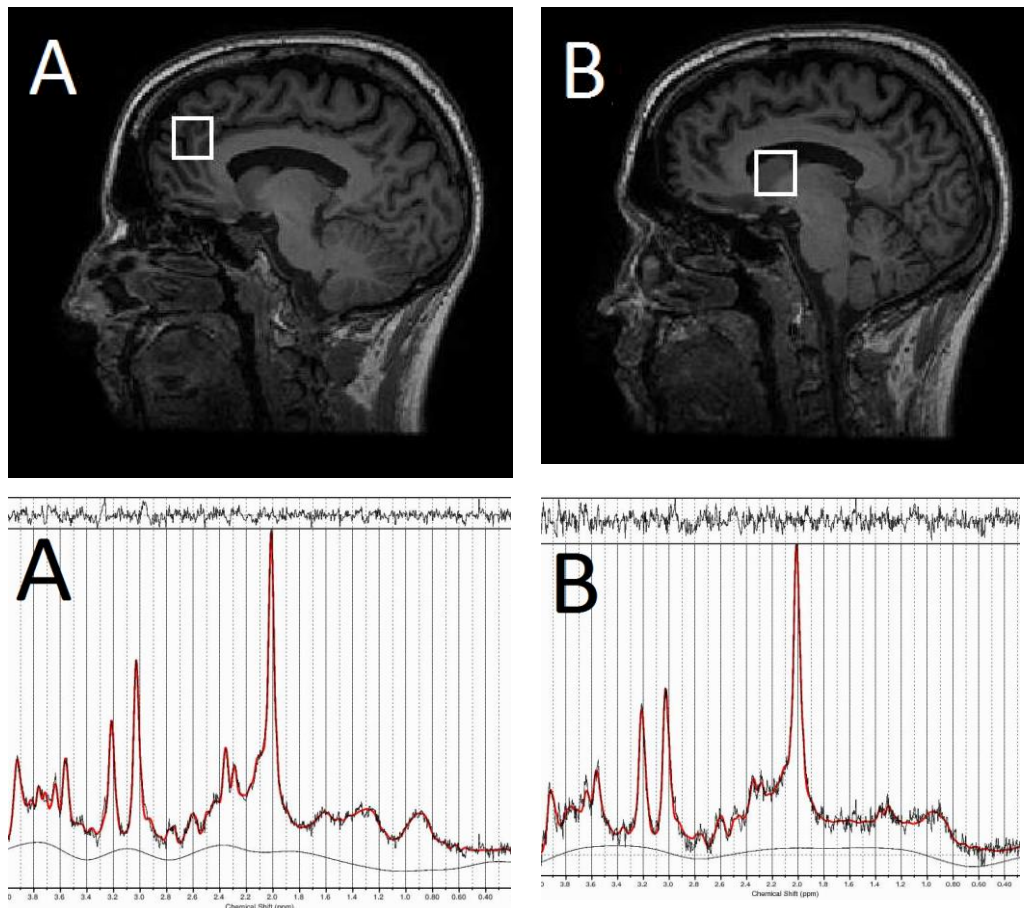


Figure 1. ^1H -MRS voxel positioning and example spectra in the anterior cingulate cortex (A) and right caudate nucleus (B).

Image processing

^1H -MRS spectra were analysed with LCModel version 6.3-01 (Provencher, 1993) using the standard basis set of 16 metabolites (L-alanine, aspartate, creatine, phosphocreatine, GABA, glucose, glutamine, glutamate, glycerophosphocholine, glycine, myo-inositol, L-lactate, N-acetylaspartate, N-acetylaspartylglutamate, phosphocholine, taurine) provided with LCModel, for the same field strength, PRESS sequence and echo times. Spectral quality was determined by visual inspection, as well as through values for spectral line-width, signal to noise ratio and the Cramér Rao Lower Bounds of the individual metabolite estimates. To calculate ^1H -MRS voxel tissue content, the T1-weighted structural images were segmented into grey matter, white matter and cerebrospinal fluid (CSF) using Statistical Parametric Mapping 8 (SPM-8) (<http://www.fil.ion.ucl.ac.uk/spm>) running in Matlab 6.5 (Mathworks Inc. Sherbon MA, USA). GE Sage 7 (GE Medical Systems) was used to locate the coordinates of each voxel, which was then mapped on to the segmented structural image using in-house software. For consistency with the study of Schmaal et al (2012), glutamate

and Glx signals referenced to creatine were used for the primary statistical analyses, and we also report water-scaled metabolite levels corrected for voxel tissue content. Metabolite values were corrected for voxel tissue content using the formula: $M_{corr} = M * (wm + 1.21 * gm + 1.55 * CSF) / (wm + gm)$, where M is the uncorrected metabolite, and wm , gm and CSF indicate the fraction of white and grey matter and cerebrospinal fluid content in the voxel. The formula assumes a CSF water concentration of $55,556 \text{ mol/m}^3$ with the LCMoDel default brain water concentration of $35,880 \text{ mol/m}^3$ (Kreis et al. 1993; Gasparovic et al. 2006).

Computation of the CBF values was done in the scanner following the methodology outlined in the recent ASL consensus paper (Alsop et al. 2015). Individual CBF maps were then transformed to the reference space of the Montreal Neurological Institute (MNI) using the Automatic Software for ASL Processing (ASAP) toolbox (Mato Abad et al. 2016) running in SPM-8 under Matlab 6.5. Default pre-processing options were used for skull-stripping, co-registration to the subject's 3D anatomical scan, and normalisation to the MNI template based on unified segmentation. The normalised maps were finally smoothed using an 8 mm kernel.

Statistical analysis

The effects of NAC on $^1\text{H-MRS}$ metabolite levels were determined using paired samples t -tests in SPSS software (version 22.0, Chicago, Illinois). For Glu/Cr and Glx/Cr in each voxel, the threshold for statistical significance was defined as $p < 0.05$, and the effect size was calculated as Cohen's d for significant values. The effects of NAC on rCBF were determined using within-subjects, second-level analysis implemented in SPM-8. For rCBF region of interest (RoI) analysis, ACC and caudate masks were created using the Talairach Daemon database atlas implemented in SPM (Lancaster et al. 1997, 2000). Spearman's correlation coefficients were used to explore relationships between the absolute change (NAC minus placebo) in Glu/Cr, Glx/Cr and the absolute change in rCBF in the ACC or caudate nucleus.

Finally, to explore potential effects of NAC on regional CBF we conducted a whole brain voxel-wise search at $P < 0.001$ uncorrected for multiple comparisons, then used cluster-based FDR correction for statistically significant clusters accepted at $P < 0.05$.

RESULTS

Sample characteristics

Participant demographic and clinical measures are presented in Table 1. MRI datasets were available in 19 of the 20 included participants as one patient experienced nausea and vomiting one hour after NAC administration and did not complete the scanning session. The remaining 19 participants reported no adverse effects after either NAC or placebo administration. Of the nineteen included participants, seven participants were currently receiving olanzapine, four risperidone, two aripiprazole, two paliperidone, one haloperidol, one zuclopenthixol, one flupentixol, and one was currently not taking any antipsychotic medication. Participants were receiving antipsychotic medication from four months to 19 years (mean (SD) months = 83.69 (71.30)), and had an illness duration of four months to 30 years (mean (SD) months = 152.00 (93.56)). Eight participants were additionally receiving citalopram (2), procyclidine (2), olanzapine (1), venlafaxine (1), propranolol (1), and sodium valproate (1).

Age, years	41.57 (10.87)
Gender, Female/Male	3/17
Education, years	13.89 (1.85)
PANSS – Positive	12.72 (4.17)
PANSS – Negative	13.72 (3.85)
PANSS – General	23.11 (6.06)
PANSS – Total	49.56 (12.27)
CGI	3.00 (0.57)
GAF	59.31 (4.79)

Table 1. Subject Demographics and Clinical measures. Data are reported as mean (standard deviation). Abbreviations: CGI, Clinical Global Impression score; GAF, Global Assessment of Functioning score; PANSS, Positive and Negative Syndrome Scale scores.

¹H-MRS spectral quality

Due to a scanner fault, one ACC dataset was not collected, leaving 18 ¹H-MRS datasets in the ACC and 19 ¹H-MRS datasets in the caudate nucleus available for analysis. For all reported metabolites, individual Cramér Rao Lower Bounds were below 20% and no spectra were excluded on the basis of poor quality. There were no significant differences in values relating

to ¹H-MRS data quality or voxel tissue content in the placebo compared to NAC condition (Table 2).

<i>Spectral quality measures</i>			
Anterior Cingulate Cortex			
	Placebo	NAC	Statistic
Line-width	0.04 (0.01)	0.04 (0.01)	t(17) = 1.51, P = 0.14
S/N	22.7 (5.40)	22.05 (3.90)	t(17) = 0.61, P = 0.54
WM	0.15 (0.10)	0.15 (0.09)	t(17) = 0.13, P = 0.90
GM	0.56 (0.10)	0.57 (0.12)	t(17) = -0.32, P = 0.75
CSF	0.29 (0.12)	0.28 (0.08)	t(17) = 0.26, P = 0.80
Right Caudate Nucleus			
	Placebo	NAC	
Line-width	0.07 (0.01)	0.07 (0.01)	t(18) = -0.56, P = 0.57
S/N	22.72 (5.43)	22.05 (3.96)	t(18) = 1.93, P = 0.68
WM	0.49 (0.09)	0.47 (0.06)	t(18) = 0.81, P = 0.43
GM	0.48 (0.11)	0.51 (0.05)	t(18) = -1.05, P = 0.31
CSF	0.03 (0.03)	0.02 (0.02)	t(18) = 0.93, P = 0.37
<i>Cramér Rao Lower Bounds (%)</i> :			
Anterior Cingulate Cortex			
	Placebo	NAC	Statistic
Glu	6.66 (2.02)	6.77 (1.51)	t(17) = -0.19, P = 0.85
Glx	6.50 (1.09)	7.44 (2.12)	t(17) = -1.88, P = 0.77
NAA	3.22 (0.42)	3.00 (0.76)	t(17) = 1.07, P = 0.29
TCho	3.16 (0.51)	3.07 (0.62)	t(17) = 0.55, P = 0.58
MI	5.27 (1.87)	5.00 (1.02)	t(17) = 0.92, P = 0.36
Cr	2.88 (0.58)	2.77 (0.54)	t(17) = 0.69, P = 0.49
Right Caudate Nucleus			
	Placebo	NAC	Statistic
Glu	8.05 (1.22)	8.21 (2.34)	t(18) = -0.30, P = 0.76
Glx	10.26 (2.30)	10.26 (5.26)	t(18) = 0.00, P = 1.0
NAA	3.36 (0.68)	3.21 (0.91)	t(18) = 5.90, P = 0.56

TCho	3.47 (0.51)	3.47 (0.51)	t(18) = 1.00, <i>P</i> = 1.00
MI	8.47 (1.98)	9.15 (3.28)	t(18) = -1.58, <i>P</i> = 0.13
Cr	3.00 (0.33)	3.00 (0.33)	t(18) = 0.43, <i>P</i> = 0.66

Table 2. Estimates of linewidths (ppm), signal-to-noise ratios, Cramér Rao Lower Bounds, and voxel white matter, grey matter and cerebrospinal fluid fractions in the anterior cingulate cortex and right caudate nucleus in placebo and NAC conditions. Data are presented as mean (standard deviation). Abbreviations: Cr, Creatine; CSF, cerebral spinal fluid; Glu, Glutamate; GM, grey matter; Glx, Glutamate + Glutamine; NAA, N-acetyl aspartate; S/N, signal to noise; TCho, Total Choline; mI, myo-Inositol; WM, white matter.

Effect of NAC on voxel glutamate levels

Compared to the placebo condition, the NAC condition was associated with significantly lower levels of Glx/Cr in the ACC ($t(17) = 2.40$; $P = .03$, $d = 0.64$; Figure 2, Table 3). There were no significant effects of condition on Glu/Cr in the ACC, on Glx/Cr or Glu/Cr in the right caudate nucleus (Figure 2), or on any of the other metabolites quantifiable from the ^1H -MRS spectra in either region (Table 3).

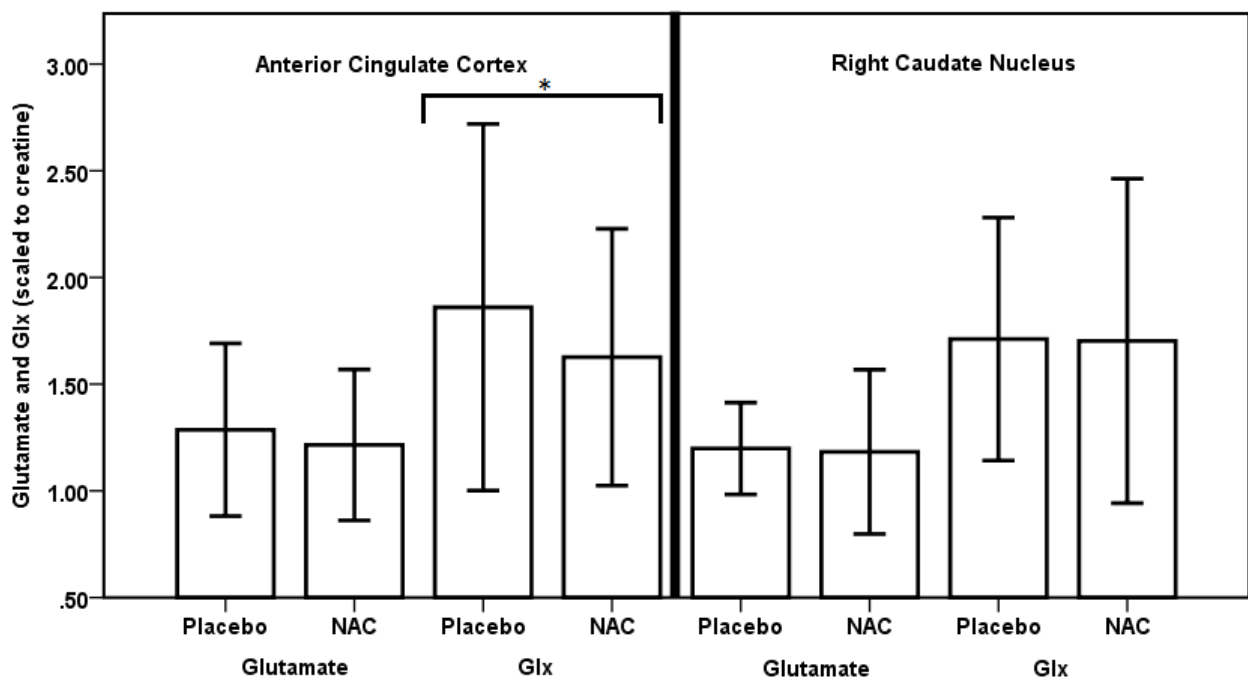


Figure 2. Glutamate and Glx (glutamate and glutamine) metabolite levels in the anterior cingulate cortex and right caudate nucleus, scaled to creatine. Data are presented as mean values, with standard deviation denoted by error bars. * indicates the significantly lower levels of Glx/Cr in the ACC in the NAC compared to placebo condition ($p < .05$).

Metabolite	Placebo	NAC	Statistic
<i>Referenced to creatine</i>			
Anterior cingulate cortex			
Glu/Cr	1.29 (0.20)	1.22 (0.18)	t(17) = 1.30, P = 0.21
Glx/Cr	1.86 (0.43)	1.63 (0.30)	t(17) = 2.40, P = 0.03*
NAA/Cr	1.31 (0.11)	1.28 (0.13)	t(17) = 0.86, P = 0.40
TCho/Cr	0.26 (0.03)	0.25 (0.02)	t(17) = 0.34, P = 0.74
MI/Cr	0.72 (0.10)	0.74 (0.14)	t(17) = -0.81, P = 0.43
Right caudate nucleus			
Glu/Cr	1.20 (0.11)	1.19 (0.19)	t(18) = 0.20, P = 0.85
Glx/Cr	1.69 (0.29)	1.70 (0.37)	t(18) = -0.05, P = 0.96
NAA/Cr	1.28 (0.16)	1.22 (0.11)	t(18) = 1.44, P = 0.17
TCho/Cr	0.26 (0.03)	0.26 (0.02)	t(18) = 1.31, P = 0.21
MI/Cr	0.51 (0.10)	0.49 (0.10)	t(18) = 0.89, P = 0.38
<i>Corrected for voxel tissue content</i>			
Anterior cingulate cortex			
Glu	14.67 (2.67)	14.77 (2.67)	t(17) = -0.12, P = 0.90
Glx	22.55 (6.33)	19.80 (4.13)	t(17) = 1.92, P = 0.07
NAA	14.96 (2.16)	15.47 (1.28)	t(17) = -0.87, P = 0.39
TCho	2.94 (0.52)	3.12 (0.49)	t(17) = -1.30, P = 0.21
MI	8.19 (1.53)	8.97 (1.84)	t(17) = -1.85, P = 0.82
Cr	11.48 (1.64)	12.19 (1.13)	t(17) = -1.68, P = 0.11
Right Caudate Nucleus			
Glu	11.20 (1.47)	12.66 (6.04)	t(18) = -0.98, P = 0.33
Glx	15.87 (3.24)	18.68 (12.00)	t(18) = -0.98, P = 0.34
NAA	11.95 (1.75)	12.82 (5.26)	t(18) = -0.67, P = 0.51
TCho	2.48 (0.39)	2.76 (1.31)	t(18) = -0.88, P = 0.45
MI	4.73 (0.78)	5.13 (2.13)	t(18) = -0.77, P = 0.45
Cr	9.43 (1.46)	10.62 (4.36)	t(18) = -1.07, P = 0.30

Table 3. Creatine and water referenced, CSF corrected metabolite values in the anterior cingulate cortex and right caudate nucleus. Data are presented as mean, standard deviation and t-test. Abbreviations: Cr, Creatine; Glu, Glutamate; Glx, Glutamate + Glutamine; mI, myo-Inositol; NAA, N-acetyl aspartate; TCho, Total Choline.

Regional cerebral blood flow

There was no significant difference in rCBF in the ACC (mean (SD) placebo = 47.22 (8.81); NAC = 46.83 (7.29); $t(18) = .349$, $P = .73$) or in the right caudate nucleus (mean (SD) placebo = 37.51 (7.48); NAC = 37.77 (6.71); $t(18) = -.310$, $P = .76$) in the NAC compared to placebo condition. Similarly, whole brain voxel-wise analysis found no significant differences in CBF between conditions. There was also no significant difference in global CBF between conditions (mean (SD) placebo = 39.64 (10.02); NAC = 40.03 (9.13); $t(18) = -.398$, $P = .70$).

Relationship between glutamate metabolites, rCBF, and PANSS

There were no significant correlations between change in Glx/Cr, Glu/Cr and change in rCBF in either the ACC or caudate (all $P > .6$). There were also no significant correlations between PANSS total, positive and negative scores and the change in Glu/Cr and Glx/Cr (all $P > .1$), or Glu/Cr and Glx/Cr in the placebo and NAC conditions in the ACC or caudate (all $P > .3$).

DISCUSSION

This study examined the effects of a single dose of N-acetylcysteine (NAC) on brain glutamate levels and resting perfusion in patients with schizophrenia. Glx/Cr in the anterior cingulate cortex (ACC) were significantly lower following administration of NAC compared to the placebo, but no further differences in the other glutamate metabolite measures in the ACC or in the caudate nucleus were apparent. The NAC compared to placebo condition was not associated with significant differences in cerebral blood flow (CBF).

The lower levels of ACC Glx/Cr after NAC compared with placebo administration in patients with schizophrenia is broadly consistent with a previous report of lower ACC glutamate following a single dose of NAC in cocaine-dependent individuals (Schmaal et al. 2012). That study described significantly lower levels of glutamate (in both creatine-scaled and water-referenced values), and a trend for lower levels of Glx after NAC administration in cocaine-dependent subjects but not in healthy controls, while we detected lower levels of Glx/Cr in the NAC condition in patients with schizophrenia. Although these results are similar, the different populations in these studies likely show different underlying neuropathology or neurobiological changes resulting from previous medication or drug use, which may have influenced sensitivity to NAC. It is also possible that the difference we see in Glx/Cr could be related to changes in creatine. However, CSF-scaled Glx levels showed a similar trend for lower levels in the NAC condition ($P = .07$). Our results thus provide preliminary evidence that NAC may decrease ACC glutamate metabolites in schizophrenia, but that will require further confirmation and replication. In addition, future studies will need to determine the extent to which lower levels of glutamate metabolites following a single dose of a glutamatergic compound are indicative of efficacy in improving symptoms over longer-term administration.

One methodological limitation of the ^1H -MRS approach that we applied is that the glutamine signal cannot be reliably estimated. We were therefore unable to determine the relative contributions of glutamine and glutamate to the lower levels of Glx/Cr observed on NAC administration, although this would be possible in future studies using ^1H -MRS optimized for detection of glutamate and glutamine. Furthermore, as our study did not include a baseline scan, we are unable to determine the relative effects of NAC and placebo administration on resting ^1H -MRS metabolite levels or rCBF. A more general limitation of ^1H -MRS is that as the signal reflects the total amount of glutamate in the voxel, it is not possible to ascribe the

effects we observed to changes in glutamate neurotransmission specifically. Previous research indicates that NAC increases extracellular glutamate, which is then thought to decrease neuronal glutamate release via activation of presynaptic mGluR2/3 receptors (Baker et al. 2002). Thus, changes in the ¹H-MRS signal may reflect the net effect of both increases in extra-synaptic and decreases in intra-synaptic glutamate following NAC administration. Indeed, in non-human primates, a decrease in binding of the mGluR5 radiotracer [¹¹C] ABP688 following NAC may reflect increases in extra-synaptic glutamate levels (Miyake et al. 2011; Sandiego et al. 2013).

An additional limitation of our study is that the precise mechanism by which NAC may modulate the ¹H-MRS glutamate signal is unclear. NAC can reduce neuronal glutamate release (Anwyl 1999), and modulate glutamate through System x_c⁻ and mGluR2/3 signalling (Baker et al. 2002; Bridges et al. 2012b). However, NAC increases glutathione (GSH) (Berk et al. 2013), which decreases nitrosative stress (a marker of glutamate dysfunction) through redox modulation, whilst reducing NMDA activity (Berk et al. 2013; Samuni et al. 2013). Therefore, GSH and NMDA modulation may contribute to the ¹H-MRS glutamate signal after NAC administration.

A recent meta-analysis of ¹H-MRS studies in schizophrenia suggests that there is no overall elevation in glutamate or Glx levels in the ACC / medial frontal cortex, but an increase in caudate glutamate and Glx levels, when compared to healthy controls (Merritt et al. 2016). Further studies have shown that ACC and caudate glutamate metabolites may be particularly elevated in patients in whom antipsychotic medication is ineffective (Egerton et al. 2012, 2017; Demjaha et al. 2014; Goldstein et al. 2015; Mouchlianitis et al. 2016).

These observations raise the possibility that the effects of NAC might be more marked in patients who have not responded to conventional treatment and have elevated glutamate levels. The current sample was not selected on the basis of antipsychotic response and had relatively low PANSS scores, which may therefore have limited the potential to observe a reduction in glutamate on NAC administration. Future studies could compare the effects of NAC or other glutamatergic interventions on glutamate levels in good versus poor antipsychotic responders.

Our second finding was that the NAC compared to placebo condition was not associated with significant differences in resting state perfusion in either the ACC or in the caudate, or in any other brain region. Previous studies that have used the same perfusion imaging approach have detected changes in regional perfusion after administration of single doses of several centrally acting compounds, including aripiprazole, haloperidol (Handley et al. 2013), risperidone (Shcherbinin et al. 2015), ketamine (Pollak et al. 2015), psilocybin (Carhart-Harris et al. 2012) and fentanyl (Zelaya et al. 2012). However, these studies involved comparison of data from drug and placebo sessions conducted on the same day, and studies where subjects were scanned on separate days have not found significant effects of lamotrigine or ketamine (Murphy et al. 2011; Shcherbinin et al. 2015). Assessment over two separate days may therefore have contributed to the absence of an observable effect of NAC on regional perfusion in our study. At similar doses and time periods after administration, NAC can reduce brain glutamate in cocaine-dependent patients (Schmaal et al. 2012) and reduce frequency-deviant mismatch negativity amplitude and increase P300 amplitude in healthy volunteers (Gunduz-Bruce et al. 2012). In addition, differences in brain network connectivity are observed after 4 days of administration of 2400mg NAC during tobacco smoking abstinence (Froeliger et al. 2015). It thus seems unlikely that the lack of difference in perfusion following NAC reflects the sub-threshold doses or plasma levels. Nonetheless, the lack of any correlation between the change in Glx, glutamate and rCBF indicates the difference in ACC Glx/Cr following NAC administration is not driven by a difference in CBF. Alternative approaches, such as examining the effects of NAC versus placebo on rCBF on the same day, or the effects of NAC on resting state brain network functional connectivity may better reveal effects on brain neurophysiology.

Early clinical trials of adjunctive administration of NAC in schizophrenia suggest it may have therapeutic effects (Lavoie et al. 2008; Berk et al. 2008, 2011; Bulut et al. 2009; Farokhnia et al. 2013; Dean et al. 2015; Conus et al. 2018). Our data provide preliminary evidence that these effects may be related to changes in brain glutamate levels. However, our findings are based on a single dose of NAC, and ¹H-MRS imaging studies of longer-term NAC administration in schizophrenia incorporating efficacy measures are indicated. As discussed above, it would also be useful if future studies stratified patient samples by antipsychotic response, as the effects of NAC may be more evident in patients in whom conventional treatment is ineffective.

References

- Allen P, Chaddock CA, Egerton A, et al (2016) Resting hyperperfusion of the hippocampus, midbrain, and basal ganglia in people at high risk for psychosis. *Am J Psychiatry* 173:392–399 . doi: 10.1176/appi.ajp.2015.15040485
- Alsop DC, Detre JA, Golay X, et al (2015) Recommended implementation of arterial spin-labeled Perfusion mri for clinical applications: A consensus of the ISMRM Perfusion Study group and the European consortium for ASL in dementia. *Magn Reson Med* 73:102–116 . doi: 10.1002/mrm.25197
- Anwyl R (1999) Metabotropic glutamate receptors: Electrophysiological properties and role in plasticity. *Brain Res. Rev.* 29:83–120
- Arakawa M, Ito Y (2007) N-acetylcysteine and neurodegenerative diseases: basic and clinical pharmacology. *Cerebellum* 6:308–14 . doi: 10.1080/14734220601142878
- Baker DA, Madayag A, Kristiansen L V, et al (2008) Contribution of cystine-glutamate antiporters to the psychotomimetic effects of phencyclidine. *Neuropsychopharmacology* 33:1760–72 . doi: 10.1038/sj.npp.1301532
- Baker DA, Xi ZX, Shen H, et al (2002) The origin and neuronal function of in vivo nonsynaptic glutamate. *J Neurosci* 22:9134–9141 . doi: 22/20/9134 [pii]
- Berk M, Copolov D, Dean O, et al (2008) N-acetyl cysteine as a glutathione precursor for schizophrenia--a double-blind, randomized, placebo-controlled trial. *Biol Psychiatry* 64:361–8 . doi: 10.1016/j.biopsych.2008.03.004
- Berk M, Dean O, Cotton SM, et al (2011) The efficacy of N-acetylcysteine as an adjunctive treatment in bipolar depression: an open label trial. *J Affect Disord* 135:389–94 . doi: 10.1016/j.jad.2011.06.005
- Berk M, Malhi GS, Gray LJ, Dean OM (2013) The promise of N-acetylcysteine in neuropsychiatry. *Trends Pharmacol Sci* 34:167–77 . doi: 10.1016/j.tips.2013.01.001
- Bridges R, Lutgen V, Lobner D, Baker D a (2012a) Thinking outside the cleft to understand synaptic activity: contribution of the cystine-glutamate antiporter (System xc-) to normal and pathological glutamatergic signaling. *Pharmacol Rev* 64:780–802 . doi: 10.1124/pr.110.003889
- Bridges RJ, Natale NR, Patel SA (2012b) System x c - cystine/glutamate antiporter: An update on molecular pharmacology and roles within the CNS. *Br J Pharmacol* 165:20–34 . doi: 10.1111/j.1476-5381.2011.01480.x
- Buchanan RW, Javitt DC, Marder SR, et al (2007) The Cognitive and Negative Symptoms in Schizophrenia Trial (CONSIST): The Efficacy of Glutamatergic Agents for Negative

- Symptoms and Cognitive Impairments. *Am J Psychiatry* 164:1593–1602 . doi: 10.1176/appi.ajp.2007.06081358
- Bugarski-Kirola D, Blaettler T, Arango C, et al (2017) Bitopertin in Negative Symptoms of Schizophrenia—Results From the Phase III FlashLyte and DayLyte Studies. *Biol Psychiatry* 82:8–16 . doi: 10.1016/j.biopsych.2016.11.014
- Bugarski-Kirola D, Iwata N, Sameljak S, et al (2016) Efficacy and safety of adjunctive bitopertin versus placebo in patients with suboptimally controlled symptoms of schizophrenia treated with antipsychotics: results from three phase 3, randomised, double-blind, parallel-group, placebo-controlled, multicentre studies in the SearchLyte clinical trial programme. *The Lancet Psychiatry* 3:1115–1128 . doi: 10.1016/S2215-0366(16)30344-3
- Bulut M, Savas HA, Altindag A, et al (2009) Beneficial effects of N-acetylcysteine in treatment resistant schizophrenia. *World J Biol Psychiatry* 10:626–8 . doi: 10.1080/15622970903144004
- Carhart-Harris RL, Erritzoe D, Williams T, et al (2012) Neural correlates of the psychedelic state as determined by fMRI studies with psilocybin. *Proc Natl Acad Sci U S A* 109:2138–43 . doi: 10.1073/pnas.1119598109
- Conus P, Seidman LJ, Fournier M, et al (2018) N-acetylcysteine in a double-blind randomized placebo-controlled trial: Toward biomarker-guided treatment in early psychosis. *Schizophr Bull* 44:317–327 . doi: 10.1093/schbul/sbx093
- Dai W, Garcia D, De Bazelaire C, Alsop DC (2008) Continuous flow-driven inversion for arterial spin labeling using pulsed radio frequency and gradient fields. *Magn Reson Med* 60:1488–1497 . doi: 10.1002/mrm.21790
- De la Fuente-Sandoval C, León-Ortiz P, Favila R, et al (2011) Higher levels of glutamate in the associative-striatum of subjects with prodromal symptoms of schizophrenia and patients with first-episode psychosis. *Neuropsychopharmacology* 36:1781–91 . doi: 10.1038/npp.2011.65
- Dean OM, Mancuso SG, Bush AI, et al (2015) Benefits of adjunctive N-acetylcysteine in a sub-group of clozapine-treated individuals diagnosed with schizophrenia. *Psychiatry Res* 230:982–983 . doi: 10.1016/j.psychres.2015.10.037
- Demjaha A, Egerton A, Murray RM, et al (2014) Antipsychotic treatment resistance in schizophrenia associated with elevated glutamate levels but normal dopamine function. *Biol Psychiatry* 75:e11-3 . doi: 10.1016/j.biopsych.2013.06.011
- Durieux AMS, Fernandes C, Murphy D, et al (2015) Targeting Glia with N-Acetylcysteine

- Modulates Brain Glutamate and Behaviors Relevant to Neurodevelopmental Disorders in C57BL/6J Mice. *Front Behav Neurosci* 9:343 . doi: 10.3389/fnbeh.2015.00343
- Egerton A, Bhachu A, Merritt K, et al (2017) Effects of Antipsychotic Administration on Brain Glutamate in Schizophrenia: A Systematic Review of Longitudinal 1H-MRS Studies. *Front Psychiatry* 8:66 . doi: 10.3389/fpsy.2017.00066
- Egerton A, Brugger S, Raffin M, et al (2012) Anterior Cingulate Glutamate Levels Related to Clinical Status Following Treatment in First-Episode Schizophrenia. *Neuropsychopharmacology* 37:2515–2521 . doi: 10.1038/npp.2012.113
- Farokhnia M, Azarkolah A, Adinehfar F, et al (2013) N-Acetylcysteine as an Adjunct to Risperidone for Treatment of Negative Symptoms in Patients With Chronic Schizophrenia. *Clin Neuropharmacol* 36:185–192 . doi: 10.1097/WNF.0000000000000001
- Fernández-Seara MA, Aznárez-Sanado M, Mengual E, et al (2011) Effects on resting cerebral blood flow and functional connectivity induced by metoclopramide: a perfusion MRI study in healthy volunteers. *Br J Pharmacol* 163:1639–52 . doi: 10.1111/j.1476-5381.2010.01161.x
- Froeliger B, McConnell PA, Stankeviciute N, et al (2015) The effects of N-Acetylcysteine on frontostriatal resting-state functional connectivity, withdrawal symptoms and smoking abstinence: A double-blind, placebo-controlled fMRI pilot study. *Drug Alcohol Depend* 156:234–242 . doi: 10.1016/j.drugalcdep.2015.09.021
- Gasparovic C, Song T, Devier D, et al (2006) Use of tissue water as a concentration reference for proton spectroscopic imaging. *Magn Reson Med* 55:1219–1226 . doi: 10.1002/mrm.20901
- Goldstein ME, Anderson VM, Pillai A, et al (2015) Glutamatergic neurometabolites in clozapine-responsive and -resistant schizophrenia. *Int J Neuropsychopharmacol* 18:1–9 . doi: 10.1093/ijnp/pyu117
- Goozée R, Handley R, Kempton MJ, Dazzan P (2014) A systematic review and meta-analysis of the effects of antipsychotic medications on regional cerebral blood flow (rCBF) in schizophrenia: association with response to treatment. *Neurosci Biobehav Rev* 43:118–36 . doi: 10.1016/j.neubiorev.2014.03.014
- Gunduz-Bruce H, Reinhart RMG, Roach BJ, et al (2012) Glutamatergic modulation of auditory information processing in the human brain. *Biol Psychiatry* 71:969–977 . doi: 10.1016/j.biopsych.2011.09.031
- Hall RC (1995) Global assessment of functioning. A modified scale. *Psychosomatics* 36:267–

75 . doi: 10.1016/S0033-3182(95)71666-8

- Handley R, Zelaya FO, Reinders AATS, et al (2013) Acute effects of single-dose aripiprazole and haloperidol on resting cerebral blood flow (rCBF) in the human brain. *Hum Brain Mapp* 34:272–282 . doi: 10.1002/hbm.21436
- Holdiness MR (1991) Clinical Pharmacokinetics of N-Acetylcysteine. *Clin Pharmacokinet* 20:123–134 . doi: 10.2165/00003088-199120020-00004
- Javitt DC, Carter CS, Krystal JH, et al (2018) Utility of imaging-based biomarkers for glutamate-targeted drug development in psychotic disorders: A randomized clinical trial. *JAMA Psychiatry* 75:11–19 . doi: 10.1001/jamapsychiatry.2017.3572
- Javitt DC, Zukin SR (1991) Recent advances in the phencyclidine model of schizophrenia. *Am J Psychiatry* 148:1301–1308 . doi: 10.1176/ajp.148.10.1301
- Kay SR, Qpjer LA (1982) The Positive and Negative Syndrome Scale (PANSS) for Schizophrenia. 13:
- Kinon BJ, Gómez J-C (2013) Clinical development of pomaglumetad methionil: a non-dopaminergic treatment for schizophrenia. *Neuropharmacology* 66:82–6 . doi: 10.1016/j.neuropharm.2012.06.002
- Kreis R, Ernst T, Ross BD (1993) Absolute Quantitation of Water and Metabolites in the Human Brain. II. Metabolite Concentrations. *J. Magn. Reson. Ser. B* 102:9–19
- Krystal JH, Karper LP, Seibyl JP, et al (1994) Subanesthetic Effects of the Noncompetitive NMDA Antagonist, Ketamine, in Humans. *Arch Gen Psychiatry* 51:199 . doi: 10.1001/archpsyc.1994.03950030035004
- Lahti AC, Holcomb HH, Weiler M a, et al (2003) Functional effects of antipsychotic drugs: Comparing clozapine with haloperidol. *Biol Psychiatry* 53:601–608 . doi: 10.1016/S0006-3223(02)01602-5
- Lancaster JL, Summerlin JL, Rainey L, et al (1997) The Talairach Daemon a database server for talairach atlas labels. 5:
- Lancaster JL, Woldorff MG, Parsons LM, et al (2000) Automated Talairach atlas labels for functional brain mapping. *Hum Brain Mapp* 10:120–31
- Lavoie S, Murray MM, Deppen P, et al (2008) Glutathione precursor, N-acetyl-cysteine, improves mismatch negativity in schizophrenia patients. *Neuropsychopharmacology* 33:2187–99 . doi: 10.1038/sj.npp.1301624
- Lindenmayer J-P (2000) Treatment Refractory Schizophrenia. *Psychiatr Q* 71:373–384 . doi: 10.1023/A:1004640408501
- Mato Abad V, García-Polo P, O'Daly O, et al (2016) ASAP (Automatic Software for ASL

- Processing): A toolbox for processing Arterial Spin Labeling images. *Magn Reson Imaging* 34:334–344 . doi: 10.1016/j.mri.2015.11.002
- Meltzer HY (1997) Treatment-Resistant Schizophrenia - The Role of Clozapine. *Curr Med Res Opin* 14:1–20 . doi: 10.1185/03007999709113338
- Merritt K, Egerton A, Kempton MJ, et al (2016) Nature of Glutamate Alterations in Schizophrenia. *JAMA Psychiatry* 73:665 . doi: 10.1001/jamapsychiatry.2016.0442
- Miyake N, Skinbjerg M, Easwaramoorthy B, et al (2011) Imaging changes in glutamate transmission in vivo with the metabotropic glutamate receptor 5 tracer [11C] ABP688 and N-acetylcysteine challenge. *Biol Psychiatry* 69:822–824 . doi: 10.1016/j.biopsych.2010.12.023
- Moghaddam B, Adams B, Verma A, Daly D (1997) Activation of glutamatergic neurotransmission by ketamine: a novel step in the pathway from NMDA receptor blockade to dopaminergic and cognitive disruptions associated with the prefrontal cortex. *J Neurosci* 17:2921–2927 . doi: 10.1016/0091-3057(93)90217-H
- Moghaddam B, Javitt D (2012) From Revolution to Evolution: The Glutamate Hypothesis of Schizophrenia and its Implication for Treatment. *Neuropsychopharmacology* 37:4–15 . doi: 10.1038/npp.2011.181
- Moghaddam B, Krystal JH (2012) Capturing the angel in angel dust: Twenty years of translational neuroscience studies of NMDA receptor antagonists in animals and humans. *Schizophr Bull* 38:942–949 . doi: 10.1093/schbul/sbs075
- Mohan A, Pendyam S, Kalivas PW, Nair SS (2011) Molecular diffusion model of neurotransmitter homeostasis around synapses supporting gradients. *Neural Comput* 23:984–1014 . doi: 10.1162/NECO_a_00101
- Mouchlianitis E, Bloomfield MAP, Law V, et al (2016) Treatment-Resistant Schizophrenia Patients Show Elevated Anterior Cingulate Cortex Glutamate Compared to Treatment-Responsive. *Schizophr Bull* 42:744–752 . doi: 10.1093/schbul/sbv151
- Murphy K, Harris AD, Diukova A, et al (2011) Pulsed arterial spin labeling perfusion imaging at 3 T: Estimating the number of subjects required in common designs of clinical trials. *Magn Reson Imaging* 29:1382–1389 . doi: 10.1016/j.mri.2011.02.030
- Pollak TA, De Simoni S, Barimani B, et al (2015) Phenomenologically distinct psychotomimetic effects of ketamine are associated with cerebral blood flow changes in functionally relevant cerebral foci: A continuous arterial spin labelling study. *Psychopharmacology (Berl)* 232:4515–4524 . doi: 10.1007/s00213-015-4078-8
- Provencher SW (1993) Estimation of metabolite concentrations from localized in vivo proton

- NMR spectra. *Magn Reson Med* 30:672–9 . doi: 10.1002/mrm.1910300604
- Rowland LM (2005) Effects of Ketamine on Anterior Cingulate Glutamate Metabolism in Healthy Humans: A 4-T Proton MRS Study. *Am J Psychiatry* 162:394–396 . doi: 10.1176/appi.ajp.162.2.394
- Samuni Y, Goldstein S, Dean OM, Berk M (2013) The chemistry and biological activities of N-acetylcysteine. *Biochim Biophys Acta* 1830:4117–29 . doi: 10.1016/j.bbagen.2013.04.016
- Sandiego CM, Nabulsi N, Lin SF, et al (2013) Studies of the metabotropic glutamate receptor 5 radioligand [¹¹C]ABP688 with N-acetylcysteine challenge in rhesus monkeys. *Synapse* 67:489–501 . doi: 10.1002/syn.21656
- Schmaal L, Veltman DJ, Nederveen A, et al (2012) N-acetylcysteine normalizes glutamate levels in cocaine-dependent patients: a randomized crossover magnetic resonance spectroscopy study. *Neuropsychopharmacology* 37:2143–52 . doi: 10.1038/npp.2012.66
- Shcherbinin S, Doyle O, Zelaya FO, et al (2015) Modulatory effects of ketamine, risperidone and lamotrigine on resting brain perfusion in healthy human subjects. *Psychopharmacology (Berl)* 232:4191–4204 . doi: 10.1007/s00213-015-4021-z
- Stone JM, Dietrich C, Edden R, et al (2012) Ketamine effects on brain GABA and glutamate levels with 1H-MRS: relationship to ketamine-induced psychopathology. *Mol Psychiatry* 17:664–665 . doi: 10.1038/mp.2011.171
- Tost H, Braus DF, Hakimi S, et al (2010) Acute D2 receptor blockade induces rapid, reversible remodeling in human cortical-striatal circuits. *Nat Neurosci* 13:920–922 . doi: 10.1038/nn.2572
- Xi Z-X, Shen H, Baker DA, Kalivas PW (2003) Inhibition of non-vesicular glutamate release by group III metabotropic glutamate receptors in the nucleus accumbens. *J Neurochem* 87:1204–1212 . doi: 10.1046/j.1471-4159.2003.02093.x
- Zelaya FO, Zois E, Muller-Pollard C, et al (2012) The response to rapid infusion of fentanyl in the human brain measured using pulsed arterial spin labelling. *Magn Reson Mater Physics, Biol Med* 25:163–175 . doi: 10.1007/s10334-011-0293-4