



## King's Research Portal

DOI:

[10.1016/j.bspc.2020.102339](https://doi.org/10.1016/j.bspc.2020.102339)

*Document Version*

Early version, also known as pre-print

[Link to publication record in King's Research Portal](#)

*Citation for published version (APA):*

Charlton, P. H., Bonnici, T., Tarassenko, L., Clifton, D. A., Beale, R., Watkinson, P. J., & Alastruey, J. (2021). An impedance pneumography signal quality index: Design, assessment and application to respiratory rate monitoring. *Biomedical Signal Processing and Control*, *65*, 102339. [102339].  
<https://doi.org/10.1016/j.bspc.2020.102339>

### **Citing this paper**

Please note that where the full-text provided on King's Research Portal is the Author Accepted Manuscript or Post-Print version this may differ from the final Published version. If citing, it is advised that you check and use the publisher's definitive version for pagination, volume/issue, and date of publication details. And where the final published version is provided on the Research Portal, if citing you are again advised to check the publisher's website for any subsequent corrections.

### **General rights**

Copyright and moral rights for the publications made accessible in the Research Portal are retained by the authors and/or other copyright owners and it is a condition of accessing publications that users recognize and abide by the legal requirements associated with these rights.

- Users may download and print one copy of any publication from the Research Portal for the purpose of private study or research.
- You may not further distribute the material or use it for any profit-making activity or commercial gain
- You may freely distribute the URL identifying the publication in the Research Portal

### **Take down policy**

If you believe that this document breaches copyright please contact [librarypure@kcl.ac.uk](mailto:librarypure@kcl.ac.uk) providing details, and we will remove access to the work immediately and investigate your claim.

# **An impedance pneumography signal quality index: design, assessment and application to respiratory rate monitoring**

Peter H. Charlton <sup>1,2,3</sup>, Timothy Bonnici <sup>4,5</sup>, Lionel Tarassenko <sup>2</sup>, David A. Clifton <sup>2</sup>, Richard Beale <sup>4</sup>, Peter J. Watkinson <sup>6</sup>, Jordi Alastruey <sup>1</sup>

<sup>1</sup> Department of Biomedical Engineering, School of Biomedical Engineering and Imaging Sciences, King's College London, King's Health Partners, London SE1 7EH, UK

<sup>2</sup> Institute of Biomedical Engineering, Department of Engineering Science, University of Oxford, Oxford OX3 7DQ, UK

<sup>3</sup> Primary Care Unit, Department of Public Health and Primary Care, University of Cambridge, Strangeways Research Laboratory, Worts' Causeway, Cambridge CB1 8RN, UK

<sup>4</sup> Department of Asthma, Allergy and Lung Biology, King's College London, King's Health Partners, London SE1 7EH, UK

<sup>5</sup> Nuffield Department of Medicine, University of Oxford, Oxford OX3 9DU, UK

<sup>6</sup> Kadoorie Centre for Critical Care Research and Education, Oxford University Hospitals NHS Foundation Trust, Oxford OX3 9DU, UK

Corresponding Author: Peter H. Charlton      pc657@medschl.cam.ac.uk

Abbreviated title: An impedance pneumography signal quality index

For submission to: Biomedical Signal Processing and Control

## Abstract

- Impedance pneumography (ImP) is widely used for respiratory rate (RR) monitoring. However, ImP-derived RRs can be imprecise. Our aim was to develop a signal quality index (SQI) for the ImP signal, and couple it with a RR algorithm, to improve RR monitoring. An SQI was designed which identifies candidate breaths and assesses signal quality using: the variation in detected breath durations, how well peaks and troughs are defined, and the similarity of breath morphologies. The SQI categorises 32 second signal segments as either high or low quality. Its performance was evaluated using two critical care datasets. RRs were estimated from high-quality segments using a RR algorithm, and compared with reference RRs derived from manual annotations. The SQI had a sensitivity of 77.7%, and specificity of 82.3%. RRs estimated from segments classified as high quality were accurate and precise, with mean absolute errors of 0.21 and 0.40 breaths per minute (bpm) on the two datasets. Clinical monitor RRs were significantly less precise. The SQI classified 34.9% of real-world data as high quality. We conclude that the proposed SQI accurately identifies high-quality segments, and RRs estimated from those segments are precise enough for clinical decision making. This SQI may improve RR monitoring in critical care. Further work should assess it with wearable sensor data.

## Key terms

thoracic impedance; signal processing; breathing rate; patient monitoring

## Abbreviations

bpm	breaths per minute	MAE	mean absolute error
CI	confidence interval	R	correlation coefficient
ImP	impedance pneumography	RR	respiratory rate
ICU	intensive care unit	SQI	signal quality index

## 1. Introduction

Respiratory rate is a key marker of the progression and severity of acute illness [1]. Consequently, respiratory rate (RR) is routinely monitored in acutely- and critically-ill hospitalised patients [2]. It is often estimated from the thoracic electrical impedance pneumography (ImP) signal, from which individual breaths can be identified and RR can be estimated [3], [4]. However, the ImP signal is susceptible to motion artifact [5], and RRs estimated from ImP signals have been found to be imprecise and inaccurate in several studies [6]–[9]. Erroneous RRs could adversely impact clinical decision making with true clinical deteriorations being missed, or false alerts of deteriorations being raised [10]. Therefore, methods for improving the performance of ImP-based RR monitoring could improve patient safety and reduce resource utilisation.

A common approach to improve the estimation of parameters from physiological signals is to use a signal quality index (SQI) to identify segments of high quality signal, from which parameters can be more reliably estimated [11]. SQIs have been used to improve: (i) heart rate estimation from the electrocardiogram signal [11]; (ii) pulse rate estimation from the photoplethysmogram signal [12]; and (iii) cardiac output estimation from the arterial blood pressure signal [13]. However, little research has been conducted on the development of a SQI for RR estimation from the ImP signal. Previous studies of ImP signal processing techniques have focused on: motion artifact detection [14] and removal [15], [16]; suppressing cardiac content [17]; decomposition into cardiac and respiratory components [18]; calibration for respiratory parameter estimation [19]; and signal quality assessment during patient transport [10], [20]. In addition, we previously developed a technique termed the agreement SQI, to determine whether a segment of ImP signal is deemed to be of sufficiently high quality to estimate RR from it accurately [21] [22]. Whilst this technique has been applied to data from healthy volunteers and hospitalised patients, its performance has not been assessed, and was found to be sub-optimal in this work. Therefore, there is scope for developing a novel SQI to improve the performance of ImP-derived RRs in the hospital setting.

The choice of algorithm to estimate RR from physiological signals also affects the performance of RR monitoring [23]. Different RR algorithms have been shown to have different performances when applied to the electrocardiogram and photoplethysmogram signals [24], and the ImP signal [25]. Indeed, a comparison of eight different RR algorithms applied to ImP signals acquired at rest found a fourfold increase in mean absolute error between the best and worst performing algorithms (which were either based on detecting individual breaths in the time domain, or identifying the frequency corresponding to the

maximum spectral power in the frequency domain) [25]. Therefore, it is important to ensure that a high-performance RR algorithm is used for ImP-based RR monitoring.

The aim of this study was to develop a novel SQI, and couple it with a high performance RR algorithm, to improve the performance of ImP-based RR monitoring in the hospital inpatient setting. The primary objective was to assess the discriminatory performance of the novel SQI for distinguishing between high and low quality ImP signal segments. Our second objective was to compare the accuracy and precision of RRs obtained from high quality segments identified by the novel SQI when using: (a) RRs reported by a clinical monitor; and (b) RRs estimated using a high performance RR algorithm. Our third objective was to assess the frequency at which RRs are reported when using the novel SQI in a real-world setting. The novel SQI was compared with the agreement SQI, and the generalisability of the findings was assessed using a second independent dataset. In Section 2 we describe the datasets used in this study, the signal processing methods, and the analysis methods. The results are presented in Section 3. The potential implications of this work for clinical practice are discussed in Section 4. This study builds on the work presented in [23], [26], in which the algorithm design was presented, but its performance was not assessed on separate datasets.

## 2. Materials and Methods

### 2.1 Datasets

Two datasets were used in this study: the *RRest-vent* dataset and the *MIMIC* dataset. Both datasets contain ImP signals, which were split into adjacent 32 s segments for analysis. A duration of 32 s was chosen as a compromise between a longer duration (which in other applications has been found to improve RR estimation) and a shorter duration (which could allow shorter high quality segments to be identified between transient artifacts and allow changes in RR to be tracked more accurately) [27].

The *RRest-vent* dataset was used to: (i) develop the SQI; (ii) assess its discriminatory performance; (iii) compare the accuracy and precision of RRs reported by a clinical monitor, and estimated by a RR algorithm; and (iv) assess the impact of false positives (segments falsely identified as high quality by the novel SQI) on RR estimates. This dataset, described in [23], contains data from 59 hospital patients during their recovery from major cardiac surgery at St Thomas' Hospital (London, UK). The following data were recorded from the clinical monitors (IntelliVue MP70, Philips Medical Systems, Andover, MA, USA) used as part of routine post-operative care: ImP signals at a sampling rate of 125 Hz, and the RRs estimated by the monitor from its ImP signals at 1 Hz. Data were acquired throughout patients' critical care stay using BedMaster data acquisition software (v.4.1.12, Excel Medical Electronics, Jupiter, FL, USA). Data were extracted at three time points during each patient's stay: whilst mechanically ventilated on the intensive care unit (ICU, in the hour immediately prior to disconnection from the ventilator); unassisted on ICU (within the hour after disconnection); and, shortly before discharge from critical care to the ambulatory ward (within the eight hour period leading up to discharge). A total of 29.5 hours of data were extracted, consisting of 10 minutes of data (18 segments) at each time point for each patient. This dataset is a subset of the LISTEN dataset, which was collected in accordance with the Declaration of Helsinki as part of National Clinical Trial no. 01549717, and approved by the Bloomsbury Research Ethics Committee (reference 12/LO/0526) [28]. Patients provided informed consent to participate in the study. The 59 patients studied in this work were selected from the wider LISTEN dataset using the following criteria: (i) patients had to follow a typical recovery trajectory (moving from intensive care to a high-dependency unit, to an ambulatory ward) and be in sinus rhythm during the recording periods; and (ii) patients were excluded if they were paced, or if a full set of physiological signals could not be recorded from the monitor.

The *RRest-vent* dataset was split into training and testing subsets. The training subset, consisting of data from 34 subjects, was used to design the novel SQI. The testing subset, consisting of data from the remaining 25 subjects, was used for analysis. Each of the 1,350

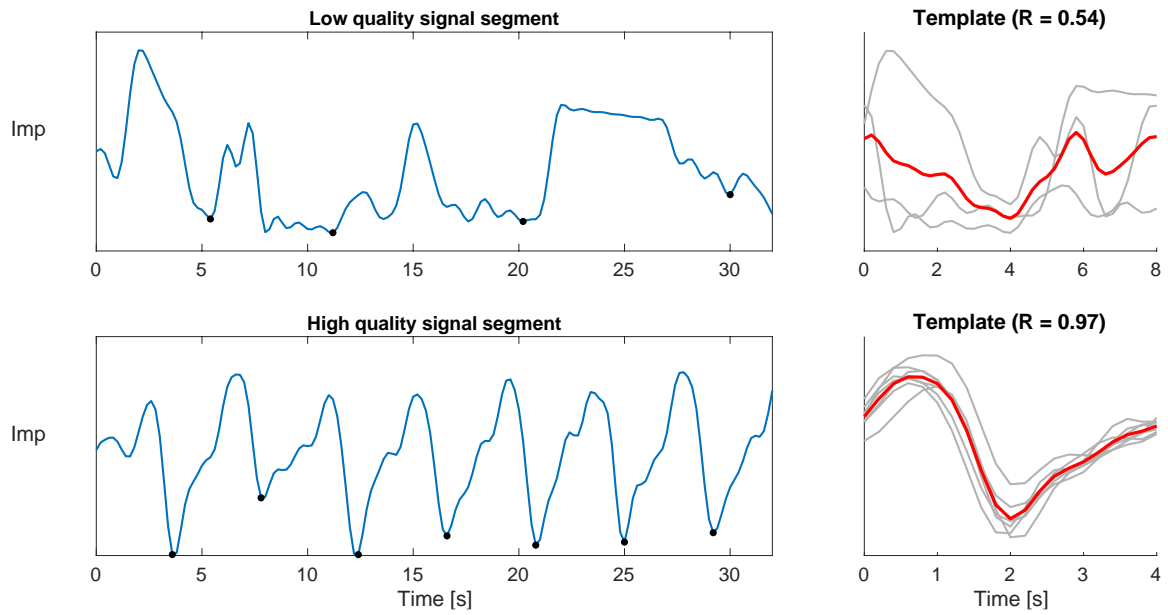
segments in the testing subset was manually labelled as being either high or low quality, where a “high quality” label was only given if the single expert annotator was confident that all the breaths in that segment could be accurately identified. In addition, individual breaths were annotated in those segments deemed to be of high quality in any of: the manual annotations, the novel SQI, or the agreement SQI. These were used to calculate reference RRs (calculated as the mean breath duration) to compare with those estimated from the Imp signal.

The *MIMIC* dataset was used to: (i) compare the accuracy and precision of RRs reported by a clinical monitor, and estimated using a RR algorithm; and (ii) assess the frequency at which RRs are reported when using the novel SQI in a real-world setting. For this study, a single hour of data from each of 100 adult critical care patients at the Beth Israel Deaconess Medical Center (Boston, MA, USA) was extracted from the *MIMIC-III Waveform Database Matched Subset* [29], [30]. The resulting dataset was termed the *RRest-mimic* dataset. Patients were continuously monitored using the same clinical monitors as in the *RRest-vent* dataset [31]. Similarly, Imp signals sampled at 125 Hz and RRs estimated from the Imp signals at 1 Hz, were extracted from the routine monitoring data. Individual breaths were manually annotated in a sample of the segments deemed to be of high quality by the novel SQI: breaths were annotated in five segments for each of the 87 patients with at least five high-quality segments; annotations were made for between one and five segments for 8 patients; and no high quality segments were available to annotate in 5 patients. A total of 452 segments were annotated. The *MIMIC-III Waveform Database Matched Subset* is freely available. Details of how to access the data used in this study (the *RRest-mimic* dataset), and the Matlab<sup>®</sup> code used to download and extract the data, are provided in the Data Access Statement.

## 2.2 The novel signal quality index algorithm

The novel SQI was developed by adapting the approach proposed by Orphanidou *et al.* for cardiac signals in [11]. It takes a 32 s segment of Imp signal as an input, and outputs the signal quality (either high or low), and a RR estimate for high-quality segments. The novel SQI consists of three stages. Firstly, individual breaths are detected in the signal. Secondly, breath durations are assessed for physiological plausibility. Any signal segments with implausible cycle timings were deemed to be of low quality. Thirdly, template matching is used to assess the similarity of breath morphologies as shown in Figure 1. If the correlation between the average breath's morphology, and each individual breath's morphology, is high enough then the signal segment is deemed to be of high quality. The three stages of the SQI are illustrated in Figure 2, and are now described in detail.

## An impedance pneumography signal quality index



*Figure 1: Impedance (Imp) signal quality assessment: A novel SQI algorithm was designed to assess the quality of Imp signal segments. On the left, two segments are shown with dots indicating detected breaths. On the right, the corresponding breath templates (red) and individual breaths (grey) are shown. The upper segment is of low quality, as indicated by a low correlation coefficient ( $R$ ) of 0.54. The lower segment is of high quality, as indicated by a high  $R$  of 0.97.*



## An impedance pneumography signal quality index

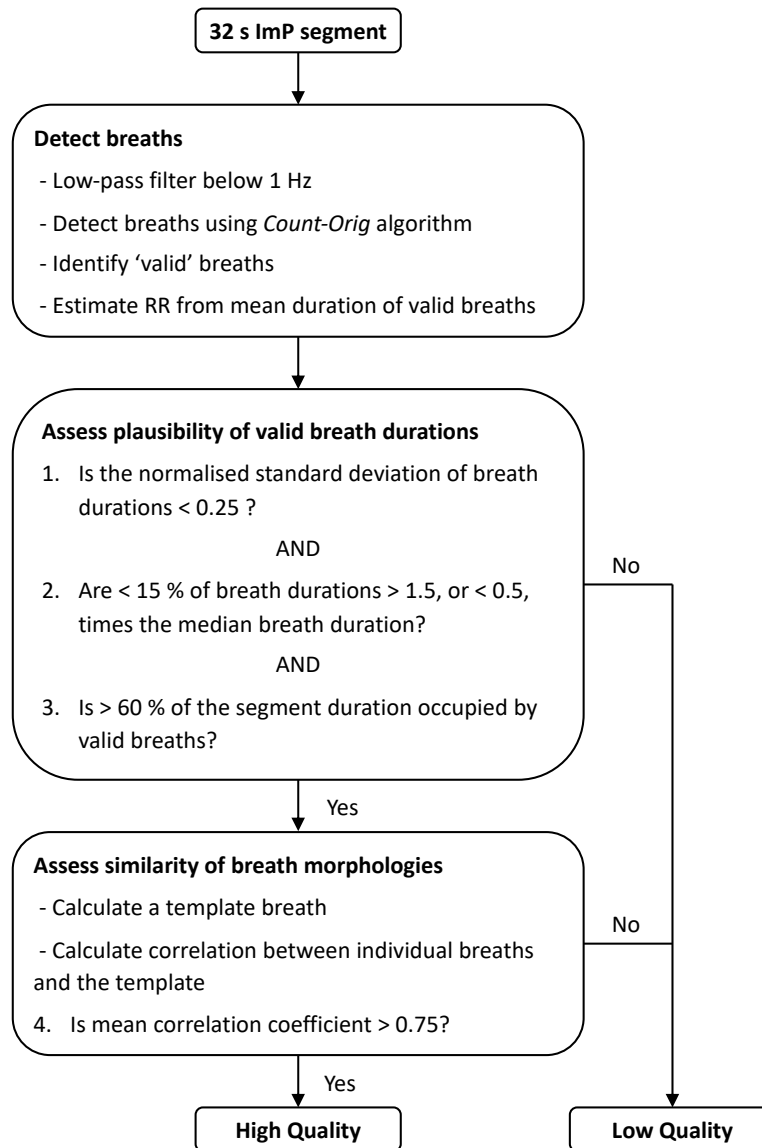


Figure 2: A flowchart of the signal quality index (SQI) algorithm.

The first stage, detection of breaths, was performed as follows. The Imp signal was low-pass filtered to remove frequency content above 1 Hz (60 breaths per minute, bpm) using a Tukey window to avoid edge effects, and downsampled to 5 Hz. Each 32 s segment was normalised to have a mean of 0 and standard deviation of 1; inverted; and any linear trend was removed. Individual breaths were then identified in the Imp signal using a modified version of the *Count-orig* method proposed in [32], containing the following steps: peaks and troughs were detected as local extrema; a threshold was defined as 0.2 times the 75<sup>th</sup> percentile of peak values; peaks with an amplitude below this threshold were ignored; valid breaths were identified as consecutive peaks separated by at least one trough with a negative

amplitude. This process helped reduce the influence of spurious peaks. The RR was estimated from the mean duration of valid breaths.

The second stage, assessment of the physiological plausibility of valid breath durations, was performed as follows. Three criteria were used: (i) the normalised standard deviation of breath durations had to be  $< 0.25$  to permit only moderate variation in the durations of detected breaths; (ii) the proportion of breath durations  $> 1.5$ , or  $< 0.5$ , times the median breath duration had to be  $< 15\%$  to prevent errors due to outlying breath durations; (iii)  $> 60\%$  of the segment duration had to be occupied by valid breaths. Any segment which did not satisfy these three criteria was deemed to be of low quality.

The third stage, assessment of the similarity of breath morphologies, was performed as follows. The similarity was quantified using the mean correlation coefficient between individual breath morphologies, and a template breath calculated as the mean breath morphology (centred on the identified breaths). The correlation coefficient had to be  $> 0.75$ .

The criteria and thresholds used in the SQI were manually chosen from a range of possible values to optimise performance on the *RRest-vent* training subset. This approach resulted in similar performance to automatic determination of thresholds using a linear logistic regression model.

### **2.3 The agreement signal quality index algorithm**

The previously proposed agreement SQI was used as a comparator in this study, since it was also originally designed to determine whether RR can be accurately estimated from a segment of Imp signal in the hospital setting [21] [22]. The agreement SQI consists of estimating RR using independent time- and frequency-domain techniques, calculating the difference between the two resulting RRs, and concluding that the signal segment is of high quality if and only if the difference is  $< 2$  bpm. In this study the two RRs were estimated by: (i) using the time-domain *Count-orig* method described in Section 2.2; and (ii) calculating the power spectrum of the signal using the Welch Periodogram (analysing 32s windows with overlapping sections of duration 12.8s, and 50% overlap), and estimating the RR as the frequency corresponding to the maximum power spectral density. These methods were chosen because of their high performance in [23]. Further details on these two methods are provided in [24].

### **2.4 Assessing the Discriminatory Performance of the Novel SQI**

The discriminatory performance of the novel SQI for distinguishing between high and low quality signal segments was assessed by comparing its labels of signal quality to the manual

annotations on the *RRest-vent* testing subset. Discriminatory performance was quantified using sensitivity and specificity, with high quality as the positive class. 95% confidence intervals (CIs) were calculated using bootstrapping with 1000 bootstrap replicas.

The performance of the novel SQI was compared to that of the previously proposed *agreement SQI* using the two-sided asymptotic McNemar test at the 5% significance level [33]. The statistical measures of discriminatory performance reported for the novel SQI were also reported for the *agreement SQI*.

## 2.5 Comparing RRs obtained from a clinical monitor and using a RR algorithm

The *RRest-vent* testing subset and the *RRest-mimic* datasets were used to compare the accuracy and precision of RRs obtained from high quality segments when using: (a) RRs reported by a clinical monitor, and (b) RRs estimated using a high-performance RR algorithm. To do so, RRs were obtained from those reported by the clinical monitor by calculating the median of the RRs outputted by the monitor during each segment. The RR algorithm used to estimate RRs from Imp signals was the *Count-Orig* algorithm [32], since it has performed well in several previous studies [23]–[25]. This consisted of identifying valid breaths (as performed in the first stage of the novel SQI, described in Section 2.2), and calculating RR as the mean duration of valid breaths. The reference RR for each segment was calculated as the mean breath duration derived from the manually annotated breaths.

A further subgroup analysis of the *RRest-vent* testing subset was conducted to assess the impact of false positives (*i.e.* low quality segments falsely identified by the SQI as high quality) on RR estimates. The accuracy and precision of RRs estimated using the RR algorithm were calculated for two subgroups of segments: those which were correctly identified as high quality by the novel SQI, and those which were incorrectly identified as high quality (as determined through manual annotation).

The following statistical methods were used to assess the accuracy and precision of RRs. The agreement between each method's RRs and the reference RRs was quantified using the Limits of Agreement technique [34]. The accuracy of RRs was quantified using the bias (*i.e.* mean error, corrected for repeated measurements within subjects),

$$bias = \frac{\sum_{i=1}^n \left( \sum_{j=1}^{m_i} [RR_{ref_{ij}} - RR_{est_{ij}}] \right)}{\sum_{i=1}^n m_i}$$

which was calculated as the mean difference between the estimated RRs,  $RR_{est}$ , and the reference RRs,  $RR_{ref}$ , across the  $i = 1, \dots, n$  subjects, each of which had  $m_i$  pairs of estimated and reference RRs. The precision of RRs was assessed by calculating the limits of agreement

An impedance pneumography signal quality index

(i.e. the expected range of 95% of errors around the systematic bias),  $\pm 1.96s$ , denoted as  $2SD$ , where  $s$  is the standard deviation of the errors. Any segments in which the estimated RR was zero were excluded from the analysis. The method described in [35] was used to account for repeated measurements per subject.  $s$  was calculated from the total variance: the sum of the within subjects variance,  $\sigma^2_w$ , and between subjects variance,  $\sigma^2_b$ , which were estimated using one-way analysis of variance:

$$\sigma^2_w = MS_{residual}$$
$$\sigma^2_b = \frac{MS_{subject} - MS_{residual}}{\left(\frac{(\sum m_i)^2 - \sum m_i^2}{(n-1)\sum m_i}\right)}$$

where  $MS_{residual}$  is the mean square error, and  $MS_{subject}$  is the difference between the mean squares for subjects, and the sums are from  $i = 1, \dots, n$ .

Two further statistics were used to assess the utility of RRs. The coverage probability,  $CP_2$ , is the proportion of high quality segments for which highly useful RRs are returned, defined as being within 2 bpm of the reference RR. The mean absolute error (MAE) was also reported.

Scatter plots of estimated and reference RRs, and Bland-Altman plots of RR errors, were provided. Errors of  $> 10$  bpm were truncated to 10 bpm on Bland-Altman plots.

## 2.6 Assessing the frequency at which RRs are reported when using the novel SQI

The frequency at which RRs are reported when using the novel SQI in a real-world setting was assessed using the real-world *RRest-mimic* dataset. Firstly, the proportion of segments which were deemed to be high quality by the novel SQI was assessed, both for the entire dataset and for individual subjects (reported as the median and inter-quartile range). Secondly, the durations of gaps between consecutive high-quality segments were assessed.

Case studies were provided to illustrate clinical scenarios in which the novel SQI combined with a RR algorithm may confer clinical benefit over current clinical monitoring.

### 3. Results

#### 3.1 The discriminatory performance of the novel SQI

The novel SQI had a sensitivity and specificity (95% CIs) of 77.7 (74.9 – 80.4) and 82.3 (79.0 – 85.2) % respectively on the *RRest-vent* testing subset. The novel SQI classified 79.6 % of the segments correctly, and only 7.3 % of segments were misclassified as high quality when the reference annotation was low quality. The confusion matrix is provided in Table 1: these indicate that there was a good balance between high and low quality data in the testing subset: 58.7 % high quality and 41.3 % low quality.

*Table 1:* The discriminatory performance of the novel SQI, assessed on the *RRest-vent* testing subset. The confusion matrix for the novel SQI is shown, indicating the number of ImP signal segments in each category, and the percentage of segments deemed to be of high and low quality by manual annotations (bottom row).

		Actual Class (determined by manual annotation)	
		High Quality	Low Quality
Predicted Class (determined by novel SQI)	High Quality	615	99
	Low Quality	177	459
		58.7%	41.3%

In comparison, the previously proposed agreement SQI had a sensitivity and specificity of 59.7 (56.3 – 62.9) and 74.9 (71.4 – 78.2) % respectively on the same data. It classified 66.0% of the segments correctly, and misclassified 10.4 % of segments as high quality. The confusion matrix is provided in the Supplementary Material. The discriminatory performance of the novel SQI was superior to that of the agreement SQI, as shown by the McNemar test rejecting the null hypothesis of marginal homogeneity between the two SQIs ( $p < 0.001$ ). Both the sensitivity and specificity of the novel SQI were significantly higher than that of the agreement SQI. Additional results for the novel and agreement SQIs across the different clinical settings in the *RRest-vent* testing subset are provided in the Supplementary Material.

#### 3.2 A comparison of RRs obtained using a RR algorithm and from a clinical monitor

Table 2 shows the performance of two methods for obtaining RRs from ImP segments deemed to be of high quality by the novel SQI: the *Count-Orig* RR algorithm, and obtaining RR estimates from the clinical monitor RRs. RR estimates were more precise when obtained using

the RR algorithm, with limits of agreement of  $0.0 \pm 1.0$  bpm and  $0.1 \pm 1.8$  bpm on the two datasets. In comparison, when using clinical monitor RRs the limits of agreement were significantly wider ( $0.3 \pm 3.7$  bpm and  $-0.1 \pm 6.0$  bpm), indicating less precision. The results indicate that performance was significantly improved when using the RR algorithm, rather than using RRs provided by the clinical monitor. Indeed, the frequencies of erroneous RRs (those with an error of  $> 2.0$  bpm, indicated by  $CP_2$ ) were only 1.4 % and 7.7 % when using the RR algorithm, compared to 15.1 % and 29.8 % when using RRs from the monitor. Furthermore, the frequencies of highly erroneous RRs which could affect treatment decisions (those with an error of  $> 5.0$  bpm), were 0.1 % and 0.2 % when using the novel SQI, compared to 3.1 % and 10.2 % when using the clinical monitor RRs. The reference and estimated RRs obtained using each method are shown in Figure 3.

*Table 2:* The performance of RRs estimated from segments deemed to be of high quality by the novel SQI. Results are reported for each dataset, when: (i) using the *Count-Orig* RR algorithm to estimate RRs; and (ii) obtaining RR estimates from the clinical monitor RRs. CI: confidence interval. Statistics are as defined in Section 2.5.

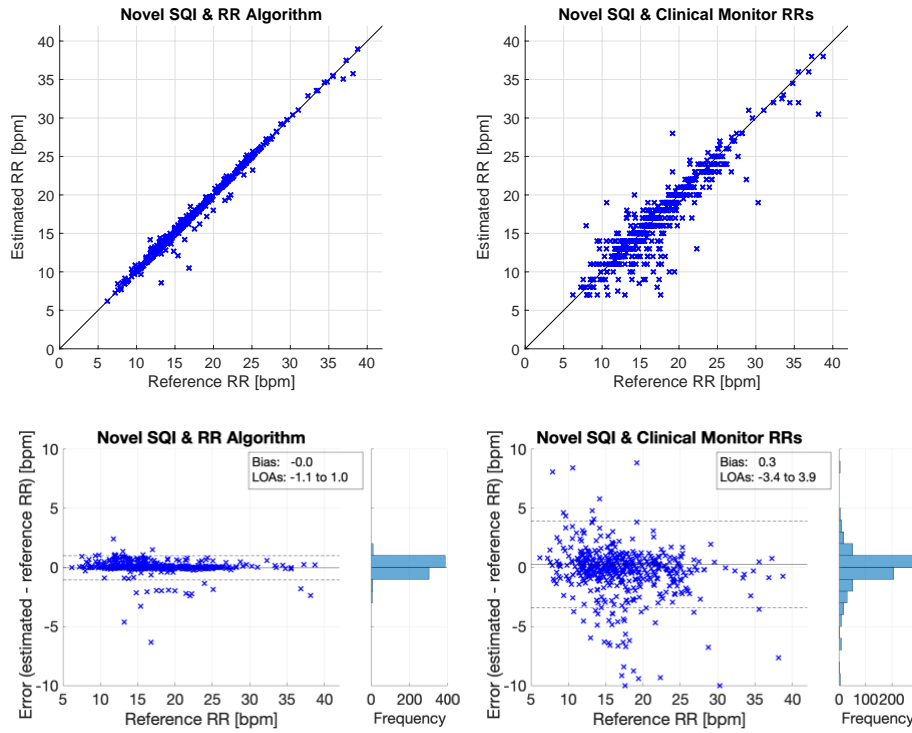
	<i>RRest-vent</i> testing subset		<i>RRest-mimic</i> dataset	
	Novel SQI & RR Algorithm	Novel SQI & Clinical Monitor RRs	Novel SQI & RR Algorithm	Novel SQI & Clinical Monitor RRs
Bias [bpm] (95% CI)	0.0 (-0.2 – 0.1)	0.3 (-0.2 – 0.7)	0.1 (-0.1 – 0.2)	-0.1 (-0.8 – 0.5)
2SD [bpm] (95% CI)	1.0 (0.8 – 1.2)	3.7 (2.9 – 4.4)	1.8 (1.5 – 2.1)	6.0 (4.9 – 7.1)
$CP_2$ [%]	98.6	84.9	92.3	70.2
$iCP_5$ [%]	0.1	3.1	0.2	10.2
MAE [bpm]	0.21	1.04	0.40	1.90
Number of windows	714	709	452	423

The impact of false positives on RR estimates was assessed by calculating RRs (using the *Count-orig* algorithm) from those segments falsely identified as high quality by the novel SQI in the *RRest-vent* testing subset. RR estimates derived from the 94 segments which were falsely identified as high quality had limits of agreement of  $0.2 \pm 2.1$  bpm (within which 95 % of errors are expected to lie). In comparison, RR estimates derived from the 580 correctly identified high-quality segments had limits of agreement of  $-0.1 \pm 0.7$  bpm. The limits of

An impedance pneumography signal quality index

agreement were significantly wider for RR estimates derived from low-quality segments, indicating less precision in those segments which were actually of low quality.

***RRest-vent testing subset***



***RRest-mimic dataset***

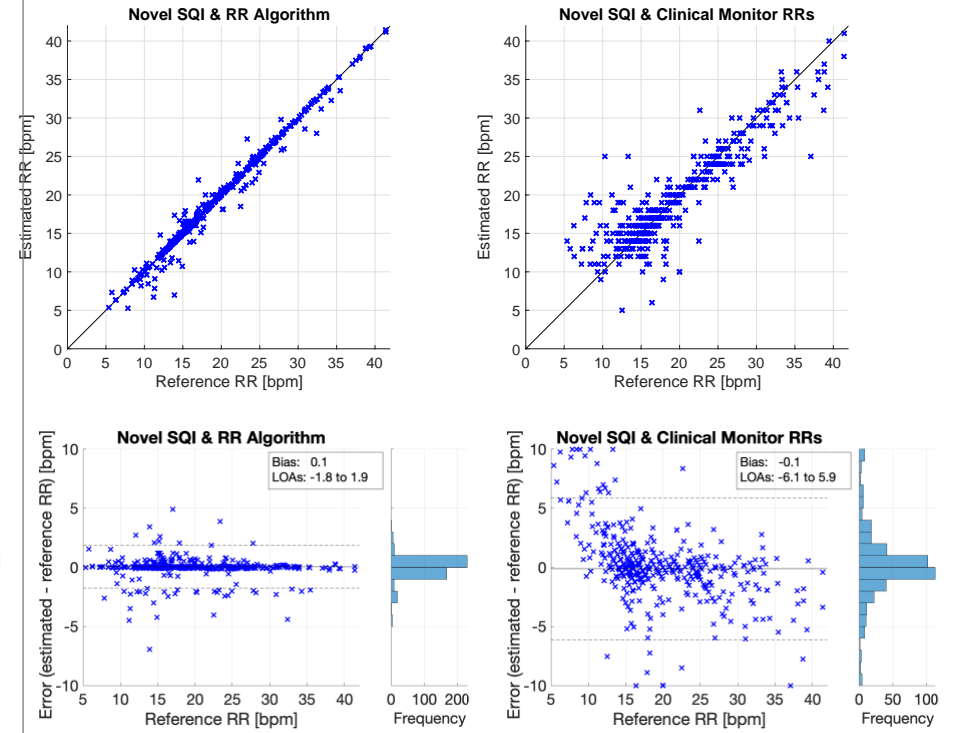


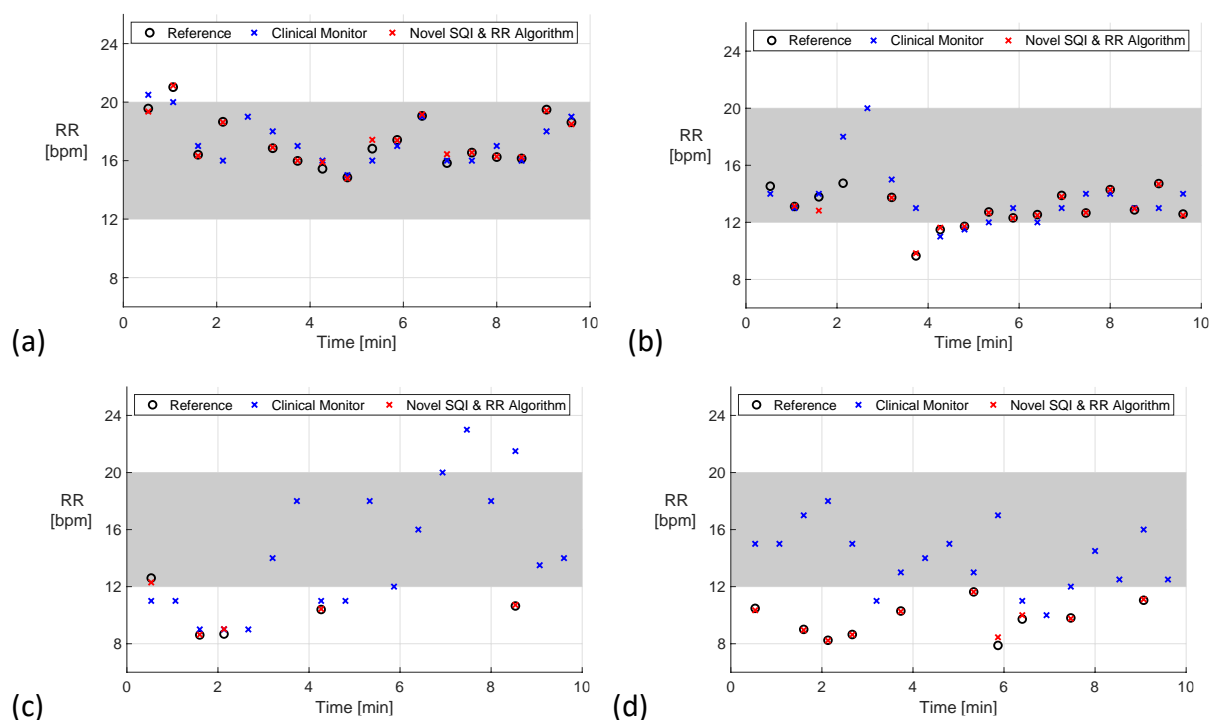
Figure 3: The performance of RRs estimated from segments deemed to be of high quality by the Novel SQI in each dataset. Results are shown for each dataset, and when using the RR algorithm or clinical monitor RRs. Upper plots show the estimated RRs plotted against the reference RRs. Lower plots show the errors against the reference RRs.



### 3.3 The frequency at which RRs were reported when using the novel SQI

The impact of the novel SQI on the proportion of segments for which RRs were reported was assessed using the real-world *RRest-mimic* dataset. Overall, the novel SQI identified 34.9% of the 10,782 non-flat-line segments as high quality in this dataset (the 517 flat-line segments were excluded from the analysis). On a per subject basis, the novel SQI identified a median (lower – upper quartiles) of 32.7 (12.3 – 55.3) % of each subject’s non-flat-line segments as high quality. The RR algorithm estimated RRs from all of the segments deemed to be high quality, indicating that the novel SQI allowed RRs to be obtained for approximately one third of the time in this real-world setting. There was a median (lower – upper quartiles) of 64 (32 – 224) s between RRs obtained from high quality segments identified by the novel SQI. The most recent RR was less than five and ten minutes ago for 79.7 % and 89.6 % of the time respectively.

Figure 4 shows four case studies demonstrating potential benefits of using the novel SQI and RR algorithm, explained in the figure caption.



**Figure 4:** Case studies demonstrating the utility of the novel SQI combined with a RR algorithm (grey shading indicates normal RRs): (a) both the clinical monitor and the novel approach track changes in RR precisely; (b) the clinical monitor outputs a high RR in a period of low signal quality (at 3 mins, as indicated by the absence of a reference RR), which could result in a false alert; (c) between 3 and 10 mins the clinical monitor outputs normal RRs in a period of predominantly low signal quality, which may result in an alert being falsely suppressed; (d) the clinical monitor incorrectly outputs mostly normal RRs when the true RRs are low, despite the signal quality being high, which may also result in an alert being falsely suppressed. Data obtained from the *RRest-vent* dataset.

#### 4. Discussion

In this study, we presented a novel SQI for use with the ImP signal. The SQI classifies periods of ImP signal as either high or low quality by identifying candidate breaths, assessing the physiological plausibility of the resulting breath-to-breath timings, and assessing the consistency of the signal morphology of each breath. The SQI was assessed on two datasets, across a range of clinical settings. It showed good performance for discriminating between high and low quality data, outperforming a previous technique from the literature. In addition, when using a RR algorithm, RRs derived from the segments identified as high quality by the novel SQI were highly precise and accurate across a wide range of RRs. A real-world assessment indicated that RRs could be obtained for approximately one third of the time when using the novel SQI. The results indicate that the SQI may confer benefit in high-dependency settings. In the future it may also be found to provide benefit when used with wearable sensors, in both hospital and community settings.

The criteria used by the SQI to discriminate between high- and low-quality data provide insight into the reasons for its performance. The SQI only deemed segments to be of high quality if: they did not exhibit high variation in breath durations, the majority of the segment was occupied by breaths with well defined peaks and troughs, and these breaths exhibited similar morphology. This indicates the key strength of the SQI: it identifies high quality segments in which there is not high variability in the breathing pattern over short periods (seconds), and in which RR can be accurately estimated. It seems likely this would have utility for detecting changes in RR which accompany acute deteriorations in monitored hospital patients, where current nurse observations are separated by several minutes or hours. However, it is not suitable for use in settings where either continuous RRs are required (such as for detection of apnea and respiratory arrests), or the breathing pattern is expected to be highly irregular (such as during ataxic breathing, cluster breathing, and potentially Cheyne-Stokes respiration [36], or in neonates).

This study builds on previous work on assessing the quality of physiological signals. We designed the novel SQI by adapting the approach presented by Orphanidou *et al.* for electrocardiogram (ECG) and photoplethysmogram (PPG) signals [11]. This approach was adapted for use with respiratory signals, and provided results comparable with previous work. The ability of the SQI to distinguish between high and low quality data (sensitivity and specificity of 78 and 82 % respectively on the *RRest-vent* testing subset) was not as high as when the approach was used with the ECG (94 and 97 %) and the PPG (91 and 95 %). However, the RRs estimated from segments deemed to be high quality had minimal bias and a precision of 1.0 and 1.8 bpm (2SD on each dataset), which is comparable to previous studies of gold-

standard RR measurements (*e.g.* 1.3 bpm when using an oral-nasal pressure sensor in [24]), and a better performance than typically achieved when estimating RR from ECG or PPG signals [24]. Furthermore, the MAEs of 0.21 and 0.40 bpm observed when using the novel SQI with a RR algorithm in this study improves on the best MAE of 0.42 bpm reported in a comparison of previous algorithms without an SQI (in laboratory rather than clinical conditions) [25]. The high performance of estimated RRs can be attributed to the selection of high-quality segments, and the use of the *Count-orig* RR algorithm, which has previously been shown to provide superior performance to other RR estimation techniques [24], [25], [32]. Nonetheless, the observation that RRs were less precise in segments falsely identified as high quality by the novel SQI indicates that the SQI could be improved in the future.

The novel SQI may impact clinical practice in several settings. Its performance on data acquired from static bedside monitors in this study indicates that it may be suitable for a prospective clinical study in high-dependency settings. However, it is likely to confer greater benefit outside of the critical care setting, where there is a lower ratio of staff to patients. In areas such as the ambulatory ward, or home monitoring, the SQI could potentially improve the alert rate resulting from Imp monitoring using wearable sensors. The case studies demonstrated how it could reduce the false alert rate, and increase the true alert rate, which would reduce healthcare costs and improve patient safety respectively. However, a key limitation of this study is that the performance of the SQI has not been assessed on data from ambulatory patients. Therefore, further work is required to assess its performance in this setting before it could reasonably be used with wearable sensor data. Such studies could be performed using both Imp monitoring and reference respiratory monitoring (such as by a facemask) during rest and exercise: the Vortal dataset would be suitable for such studies [24], [37]. In addition, the performance of the SQI was assessed against signal quality and breath annotations provided by a single annotator. Future studies could provide further, complementary evidence on its performance in additional clinical settings.

The SQI is also expected to have impact in the research setting. A recent review of techniques to estimate RR from the ECG and PPG identified the need to obtain reliable RRs from reference respiratory signals to evaluate the performance of ECG- and PPG-based RR algorithms [27]. Several datasets which have been previously used to develop RR algorithms contain reference Imp signals, such as the MGH/MF and MIMIC datasets [29], [30], [38]. The MIMIC dataset, containing data from critical care patients, is widely used for other purposes too [39]. The SQI is suitable for extracting reliable RRs from this dataset, increasing the scope of studies which can be conducted on the dataset.

## 5. Conclusions

The novel ImP SQI presented in this study was found to discriminate well between low- and high-quality data, and result in highly accurate and precise RR estimates when coupled with a high performance RR algorithm. The SQI was assessed in the critical care setting, and may confer clinical benefit for identifying acute deteriorations in that setting. It is also a valuable resource for future research, enhancing the value of existing datasets containing ImP signals. A Matlab<sup>®</sup> implementation of the SQI is publicly available (see Supplementary Material). Importantly, the SQI is not suitable for use in settings where RRs are required continuously. Furthermore, it has not yet been assessed outside of the critical care setting, and in the presence of irregular breathing patterns. It could potentially have great benefit if used with wearable sensors, making this a promising avenue for future research.

## Acknowledgments

This work was supported by a UK Engineering and Physical Sciences Research Council (EPSRC) Impact Acceleration Award awarded to PHC; the EPSRC [EP/H019944/1]; the Wellcome EPSRC Centre for Medical Engineering at King's College London [WT 203148/Z/16/Z]; the Oxford and King's College London Centres of Excellence in Medical Engineering funded by the Wellcome Trust and EPSRC under grants [WT88877/Z/09/Z] and [WT088641/Z/09/Z]; the National Institute for Health Research (NIHR) Biomedical Research Centre based at Guy's & St Thomas' NHS Foundation Trust and King's College London; the NIHR Oxford Biomedical Research Centre Programme; a Royal Academy of Engineering Research Fellowship (RAEng) awarded to DAC; and EPSRC grants EP/P009824/1 and EP/N020774/1 to DAC. The views expressed are those of the authors and not necessarily those of the EPSRC, Wellcome Trust, NIHR, NHS or RAEng.

## Data Access Statement

The *MIMIC III Waveform Database Matched Subset* is publicly available at <https://doi.org/10.13026/C2607M>. The *RRest-mimic* subset, and the Matlab<sup>®</sup> code used to download, extract and analyse it, are available at <https://doi.org/10.5281/zenodo.3973770>. Instructions for reproducing the analyses of the *RRest-mimic* subset are provided in the Supplementary Material. Further information is provided at: <https://peterhcharlton.github.io/RRest>. The *RRest-vent* dataset used in this study is not currently available due to the restrictions placed on the clinical study in which it was acquired. For further information, please contact [research.data@kcl.ac.uk](mailto:research.data@kcl.ac.uk).

## References

- [1] M. Cretikos, J. Chen, K. Hillman, R. Bellomo, S. Finfer, and A. Flabouris, "The objective medical emergency team activation criteria: A case-control study," *Resuscitation*, vol. 73, no. 1, pp. 62–72, 2007, doi: 10.1016/j.resuscitation.2006.08.020.
- [2] Royal College of Physicians, "National Early Warning Score (NEWS) 2: Standardising the assessment of acute-illness severity in the NHS." RCP, Updated report of a working party. London, 2017.
- [3] J. J. Freundlich and J. C. Erickson, "Electrical impedance pneumography for simple nonrestrictive continuous monitoring of respiratory rate, rhythm and tidal volume for surgical patients," *Chest*, vol. 65, no. 2, pp. 181–184, 1974, doi: 10.1378/chest.65.2.181.
- [4] L. M. Posthuma, M. J. Visscher, P. B. Lirk, E. J. M. N. van Dijkum, M. W. Hollmann, and B. Preckel, "Insights into postoperative respiration by using continuous wireless monitoring of respiratory rate on the postoperative ward: a cohort study," *J. Clin. Monit. Comput.*, no. 0123456789, 2019, doi: 10.1007/s10877-019-00419-4.
- [5] A. V Sahakian, W. J. Tompkins, and J. G. Webster, "Electrode motion artifacts in electrical impedance pneumography," *IEEE Trans. Biomed. Eng.*, vol. BME-32, no. 6, pp. 448–451, 1985, doi: 10.1109/TBME.1985.325453.
- [6] P. B. Lovett, J. M. Buchwald, K. Stürmann, and P. Bijur, "The vexatious vital: neither clinical measurements by nurses nor an electronic monitor provides accurate measurements of respiratory rate in triage," *Ann. Emerg. Med.*, vol. 45, no. 1, pp. 68–76, 2005, doi: 10.1016/j.annemergmed.2004.06.016.
- [7] A. Granholm, N. E. Pedersen, A. Lippert, L. F. Petersen, and L. S. Rasmussen, "Respiratory rates measured by a standardised clinical approach, ward staff, and a wireless device," *Acta Anaesthesiol. Scand.*, vol. 60, no. 10, pp. 1444–1452, 2016, doi: 10.1111/aas.12784.
- [8] A. Gaucher, D. Frasca, O. Mimos, and B. Debaene, "Accuracy of respiratory rate monitoring by capnometry using the Capnomask® in extubated patients receiving supplemental oxygen after surgery," *Br. J. Anaesth.*, vol. 108, no. 2, pp. 316–320, 2012, doi: 10.1093/bja/aer383.
- [9] B. G. Goudra, "Comparison of acoustic respiration rate, impedance pneumography and capnometry monitors for respiration rate accuracy and apnea detection during GI endoscopy anesthesia," *Open J. Anesthesiol.*, vol. 3, pp. 74–9, 2013, doi: 10.4236/ojanes.2013.32019.
- [10] L. Chen, A. T. Reisner, A. Gribok, T. M. McKenna, and J. Reifman, "Can we improve the clinical utility of respiratory rate as a monitored vital sign?," *Shock*, vol. 31, no. 6, pp. 575–581, 2009, doi: 10.1097/SHK.0b013e318193e885.
- [11] C. Orphanidou, T. Bonnici, P. Charlton, D. Clifton, D. Vallance, and L. Tarassenko,

- “Signal-quality indices for the electrocardiogram and photoplethysmogram: derivation and applications to wireless monitoring,” *IEEE J. Biomed. Heal. Informatics*, vol. 19, no. 3, pp. 832–8, 2015, doi: 10.1109/JBHI.2014.2338351.
- [12] J. A. Sukor, S. J. Redmond, and N. H. Lovell, “Signal quality measures for pulse oximetry through waveform morphology analysis.,” *Physiol. Meas.*, vol. 32, no. 3, pp. 369–384, 2011, doi: 10.1088/0967-3334/32/3/008.
- [13] J. X. Sun, A. T. Reisner, and R. G. Mark, “A signal abnormality index for arterial blood pressure waveforms,” in *Computers in Cardiology*, 2006, vol. 33, pp. 13–16.
- [14] M. Młyńczak and G. Cybulski, “Motion artifact detection in respiratory signals based on Teager energy operator and accelerometer signals,” in *EMBECC & NBC 2017, IFMBE Proceedings*, vol. 65, Springer, 2018, pp. 45–48.
- [15] S. Ansari, K. R. Ward, and K. Najarian, “Motion Artifact Suppression in Impedance Pneumography Signal for Portable Monitoring of Respiration: An Adaptive Approach,” *IEEE J. Biomed. Heal. Informatics*, vol. 21, no. 2, pp. 387–398, 2017, doi: 10.1109/JBHI.2016.2524646.
- [16] S. Ansari, K. Ward, and K. Najarian, “Epsilon-tube filtering: Reduction of high-amplitude motion artifacts from impedance plethysmography signal,” *IEEE J. Biomed. Heal. Informatics*, vol. 19, no. 2, pp. 406–417, 2015, doi: 10.1109/JBHI.2014.2316287.
- [17] V. P. Seppä, J. Hyttinen, and J. Viik, “A method for suppressing cardiogenic oscillations in impedance pneumography,” *Physiol. Meas.*, vol. 32, no. 3, pp. 337–345, 2011, doi: 10.1088/0967-3334/32/3/005.
- [18] M. Młyńczak and G. Cybulski, “Decomposition of the cardiac and respiratory components from impedance pneumography signals,” in *Proceedings of the 10th International Joint Conference on Biomedical Engineering Systems and Technologies (BIOSTEC 2017)*, 2017, pp. 26–33, doi: 10.5220/0006107200260033.
- [19] M. Młyńczak, W. Niewiadomski, M. Zyliński, and G. Cybulski, “Assessment of calibration methods on impedance pneumography accuracy,” *Biomed. Tech.*, vol. 2015, no. 6, pp. 587–593, 2015, doi: 10.1515/bmt-2015-0125.
- [20] L. Chen, T. McKenna, A. Reisner, and J. Reifman, “Algorithms to qualify respiratory data collected during the transport of trauma patients,” *Physiol. Meas.*, vol. 27, no. 9, pp. 797–816, 2006, doi: 10.1088/0967-3334/27/9/004.
- [21] M. A. F. Pimentel, P. H. Charlton, and D. A. Clifton, “Probabilistic estimation of respiratory rate from wearable sensors,” in *Wearable Electronics Sensors*, vol. 15, S. C. Mukhopadhyay, Ed. Springer International Publishing, 2015, pp. 241–62.
- [22] C. Orphanidou, S. Fleming, S. a. Shah, and L. Tarassenko, “Data fusion for estimating respiratory rate from a single-lead ECG,” *Biomed. Signal Process. Control*, vol. 8, no. 1, pp. 98–105, 2013, doi: 10.1016/j.bspc.2012.06.001.
- [23] P. H. Charlton, “Continuous respiratory rate monitoring to detect clinical

- deteriorations using wearable sensors,” PhD Thesis, King’s College London, 2017.
- [24] P. H. Charlton, T. Bonnici, L. Tarassenko, D. A. Clifton, R. Beale, and P. J. Watkinson, “An assessment of algorithms to estimate respiratory rate from the electrocardiogram and photoplethysmogram,” *Physiol. Meas.*, vol. 37, no. 4, pp. 610–26, 2016, doi: 10.1088/0967-3334/37/4/610.
- [25] V. Jeyhani, T. Vuorinen, M. Mäntysalo, and A. Vehkaoja, “Comparison of simple algorithms for estimating respiration rate from electrical impedance pneumography signals in wearable devices,” *Health Technol. (Berl.)*, vol. 7, no. 1, pp. 21–31, 2017, doi: 10.1007/s12553-016-0156-0.
- [26] P. H. Charlton *et al.*, “A signal quality index for the impedance respiratory signal,” in *Proc. BioMedEng18*, 2018, p. 130.
- [27] P. H. Charlton *et al.*, “Breathing rate estimation from the electrocardiogram and photoplethysmogram: a review,” *IEEE Rev. Biomed. Eng.*, vol. 11, pp. 2–20, 2018, doi: 10.1109/RBME.2017.2763681.
- [28] T. Bonnici, P. Charlton, D. Pierre, L. Tarassenko, P. Watkinson, and R. Beale, “Experiences implementing a system for widespread recording of patient physiology,” *J. Intensive Care Soc.*, vol. 16, no. 1\_suppl, pp. 24–92, 2015, doi: 10.1177/1751143715577565.
- [29] A. L. Goldberger *et al.*, “PhysioBank, PhysioToolkit, and PhysioNet: components of a new research resource for complex physiologic signals,” *Circulation*, vol. 101, no. 23, pp. E215–20, 2000, doi: 10.1161/01.CIR.101.23.e215.
- [30] A. E. W. Johnson *et al.*, “MIMIC-III, a freely accessible critical care database,” *Sci. Data*, vol. 3, p. 160035, 2016, doi: 10.1038/sdata.2016.35.
- [31] M. Saeed, M. Villarroel, A. T. Reisner, G. Moody, and B. Moody, “MIMIC II: A public access ICU database,” Cambridge, 2010.
- [32] A. Schäfer and K. W. Kratky, “Estimation of breathing rate from respiratory sinus arrhythmia: comparison of various methods,” *Ann. Biomed. Eng.*, vol. 36, no. 3, pp. 476–85, 2008, doi: 10.1007/s10439-007-9428-1.
- [33] Q. McNemar, “Note on the sampling error of the difference between correlated proportions or percentages,” *Psychometrika*, vol. 12, no. 2, pp. 153–157, 1947, doi: 10.1007/BF02295996.
- [34] J. M. Bland and D. G. Altman, “Statistical methods for assessing agreement between two methods of clinical measurement,” *Lancet*, vol. 1, pp. 307–10, 1986, doi: 10.1016/S0140-6736(86)90837-8.
- [35] J. M. Bland and D. G. Altman, “Agreement between methods of measurement with multiple observations per individual,” *J. Biopharm. Stat.*, vol. 17, no. 4, pp. 571–82, 2007, doi: 10.1080/10543400701329422.

- [36] S. R. Braun, "Respiratory rate and pattern," in *Clinical Methods: The History, Physical, and Laboratory Examinations*, 3rd ed., H. Walker, W. Hall, and J. Hurst, Eds. Boston: Butterworths, 1990, pp. 226–30.
- [37] P. H. Charlton *et al.*, "Extraction of respiratory signals from the electrocardiogram and photoplethysmogram: technical and physiological determinants," *Physiol. Meas.*, vol. 38, no. 5, pp. 669–690, 2017, doi: 10.1088/1361-6579/aa670e.
- [38] J. Welch, P. Ford, R. Teplick, and R. Rubsamen, "The Massachusetts General Hospital-Marquette Foundation Hemodynamic and Electrocardiographic Database -- Comprehensive collection of critical care waveforms," *J. Clin. Monit.*, vol. 7, no. 1, pp. 96–7, 1991.
- [39] MIT Critical Data, *Secondary Analysis of Electronic Health Records*. Springer International Publishing, 2016.



# **An impedance pneumography signal quality index: design, assessment and application to respiratory rate monitoring**

Peter H. Charlton, Timothy Bonnici, Lionel Tarassenko, David A. Clifton, Peter J. Watkinson,  
Richard Beale, Jordi Alastruey

## **Supplementary Material**

## 1. Additional Results

The confusion matrix from which the discriminatory performance of the novel SQI was assessed was presented in Table 1 of the main text. The corresponding confusion matrix for the agreement SQI is present in Table S3.

*Table S3:* The discriminatory performance of the agreement SQI, assessed on the *RRest-vent* testing subset. The confusion matrix for the agreement SQI is shown, indicating the number of ImP signal segments in each category, and the percentage of segments deemed to be of high and low quality by manual annotations (bottom row).

		Actual Class (determined by manual annotation)	
		High Quality	Low Quality
Predicted Class (determined by novel SQI)	High Quality	473	140
	Low Quality	319	418
		58.7%	41.3%

The discriminatory performance of the novel SQI was summarised for the entire *RRest-vent* dataset in Table 1 and in the main text. The corresponding results separated according to clinical setting, for both the novel SQI and the agreement SQI, are provided in Table S4 and

Table S5 respectively. The performance of RR estimates obtained from segments deemed to be of high quality by each SQI is also provided for completeness. For comparison, the performance of RR estimates obtained from segments manually deemed to be of high quality is shown in Table S6.

Table S4: The performance of the novel signal quality index (SQI) on the *RRest-vent* testing subset.

	All	Ventilated in ICU	Unassisted in ICU	Shortly before ambulatory ward
<i>Assessing signal quality</i>				
Sensitivity [%] (95% CI)	77.7 (74.9 – 80.4)	82.4 (77.6 – 86.8)	76.7 (70.0 – 81.8)	74.0 (68.9 – 78.7)
Specificity [%] (95% CI)	82.3 (79.0 – 85.2)	74.0 (66.8 – 80.3)	90.7 (86.3 – 94.3)	79.2 (72.4 – 85.4)
Number of segments	1,350	450	450	450
<i>The performance of RR estimates obtained using the Count-Orig RR algorithm</i>				
Bias [bpm] (95% CI)	0.0 (-0.2 – 0.1)	-0.1 (-0.3 - 0.1)	0.0 (-0.3 - 0.3)	0.0 (-0.2 – 0.2)
2SD [bpm] (95% CI)	1.0 (0.8 – 1.2)	0.9 (0.6 – 1.2)	1.4 (0.9 – 1.9)	0.8 (0.5 – 1.1)
CP <sub>2</sub> [%]	98.6	99.3	97.4	98.8
iCP <sub>5</sub> [%]	0.1	0.0	0.5	0.0
MAE [bpm]	0.21	0.23	0.24	0.18
Number of segments	714	271	192	251
<i>The performance of RR estimates obtained from clinical monitor RRs</i>				
Bias [bpm] (95% CI)	0.3 (-0.2 – 0.7)	0.3 (-0.5 – 1.1)	0.3 (-0.7 – 1.3)	0.2 (-0.4 – 0.8)
2SD [bpm] (95% CI)	3.7 (2.9 – 4.4)	3.6 (2.3 – 5.0)	4.5 (2.8 – 6.3)	2.9 (1.9 – 4.0)
CP <sub>2</sub> [%]	84.9	84.5	81.2	88.3
iCP <sub>5</sub> [%]	3.1	3.3	5.2	1.2
MAE [bpm]	1.04	0.92	1.36	0.94
Number of windows	709	271	191	247

*Table S5: The performance of the agreement signal quality index (SQI) on the RRest-vent testing subset.*

	All	Ventilated in ICU	Unassisted in ICU	Shortly before ambulatory ward
<i>Assessing signal quality</i>				
Sensitivity [%] (95% CI)	59.7 (56.3 – 62.9)	48.7 (42.7 – 54.4)	63.2 (56.9 – 69.1)	67.2 (62.0 – 72.2)
Specificity [%] (95% CI)	74.9 (71.4 – 78.2)	71.8 (64.2 – 77.7)	81.5 (76.3 – 86.3)	68.8 (61.5 – 75.3)
Number of segments	1,350	450	450	450
<i>The performance of RR estimates obtained using the Count-Orig RR algorithm</i>				
Bias [bpm] (95% CI)	0.4 (0.0 – 0.8)	0.4 (-0.3 – 1.1)	0.3 (-0.2 – 0.8)	0.5 (-0.3 – 1.2)
2SD [bpm] (95% CI)	3.0 (2.4 – 3.7)	2.9 (1.8 – 4.1)	2.3 (1.4 – 3.2)	3.5 (2.2 – 4.8)
CP <sub>2</sub> [%]	89.6	87.4	89.1	91.5
iCP <sub>5</sub> [%]	1.6	1.6	0.5	2.4
MAE [bpm]	0.60	0.62	0.53	0.64
Number of segments	613	183	183	247
<i>The performance of RR estimates obtained from clinical monitor RRs</i>				
Bias [bpm] (95% CI)	0.4 (-0.1 – 1.0)	0.4 (-0.6 – 1.3)	0.4 (-0.9 – 1.6)	0.5 (-0.3 – 1.3)
2SD [bpm] (95% CI)	4.5 (3.6 – 5.5)	4.1 (2.5 – 5.8)	5.7 (3.6 – 7.9)	3.8 (2.4 – 5.2)
CP <sub>2</sub> [%]	80.0	80.9	74.6	83.3
iCP <sub>5</sub> [%]	4.9	3.8	7.2	4.1
MAE [bpm]	1.32	1.13	1.72	1.18
Number of segments	610	183	181	246

*Table S6: The performance of RR estimates obtained from segments manually identified as high quality in the RRest-vent testing subset.*

	All	Ventilated in ICU	Unassisted in ICU	Shortly before ambulatory ward
<i>The performance of RR estimates obtained using the Count-Orig RR algorithm</i>				
Bias [bpm] (95% CI)	0.0 (-0.2 – 0.1)	-0.1 (-0.3 - 0.1)	0.0 (-0.2 - 0.3)	0.0 (-0.2 – 0.3)
2SD [bpm] (95% CI)	1.1 (0.9 – 1.3)	1.0 (0.6 – 1.3)	1.3 (0.8 – 1.8)	1.1 (0.7 – 1.5)
CP <sub>2</sub> [%]	97.9	98.7	96.9	98.0
iCP <sub>5</sub> [%]	0.0	0.0	0.0	0.0
MAE [bpm]	0.24	0.25	0.25	0.22
Number of segments	681	238	191	252
<i>The performance of RR estimates obtained from clinical monitor RRs</i>				
Bias [bpm] (95% CI)	0.2 (-0.3 – 0.7)	0.1 (-0.7 – 0.9)	0.3 (-0.9 – 1.4)	0.2 (-0.5 – 0.8)
2SD [bpm] (95% CI)	3.9 (3.1 – 4.7)	3.7 (2.4 – 5.1)	5.1 (3.1 – 7.1)	3.0 (1.9 – 4.2)
CP <sub>2</sub> [%]	84.9	86.1	79.5	88.0
iCP <sub>5</sub> [%]	3.1	2.5	5.8	1.6
MAE [bpm]	1.07	0.88	1.47	0.96
Number of segments	677	238	190	249

## 2. Reproduction Instructions

The curation and analyses of the *RRest-mimic* subset reported in this paper can be reproduced as follows.

### ***Reproducing the analysis***

These steps can be used to quickly reproduce the analysis using the curated and annotated dataset.

1. Download the curated and annotated dataset from [Zenodo](#) using this [direct download link](#).
2. Run the analysis using the [run\\_imp\\_sqi\\_mimic.m](#) script.

### ***Reproducing data extraction, curation and analysis***

These steps include downloading the raw data files, extracting data from these files, collating the dataset, manually annotating the data, and performing the analysis.

1. Use the [ImP SQL mimic data importer.m](#) script to download raw MIMIC data files from PhysioNet, and collate them into a single Matlab file.
2. Prepare the dataset for manual annotation by running the [run\\_imp\\_sqi\\_mimic.m](#) script.
3. Manually annotate the signals by running the [run\\_mimic\\_imp\\_annotation.m](#) script - the annotations are stored in separate files (the original annotation files are available [here](#)).
4. Import the manual annotations into the collated data file by re-running the [ImP SQL mimic data importer.m](#) script.
5. Run [run\\_imp\\_sqi\\_mimic.m](#) to perform the analysis described in the publication.