



King's Research Portal

DOI:

[10.1074/jbc.AC118.004816](https://doi.org/10.1074/jbc.AC118.004816)

Document Version

Peer reviewed version

[Link to publication record in King's Research Portal](#)

Citation for published version (APA):

Kampourakis, T., Ponnam, S., Sun, Y.-B., Sevieva, I. R., & Irving, M. (2018). Structural and functional effects of myosin binding protein-C phosphorylation in heart muscle are not mimicked by serine-to-aspartate substitutions. *Journal of Biological Chemistry*. Advance online publication. <https://doi.org/10.1074/jbc.AC118.004816>

Citing this paper

Please note that where the full-text provided on King's Research Portal is the Author Accepted Manuscript or Post-Print version this may differ from the final Published version. If citing, it is advised that you check and use the publisher's definitive version for pagination, volume/issue, and date of publication details. And where the final published version is provided on the Research Portal, if citing you are again advised to check the publisher's website for any subsequent corrections.

General rights

Copyright and moral rights for the publications made accessible in the Research Portal are retained by the authors and/or other copyright owners and it is a condition of accessing publications that users recognize and abide by the legal requirements associated with these rights.

- Users may download and print one copy of any publication from the Research Portal for the purpose of private study or research.
- You may not further distribute the material or use it for any profit-making activity or commercial gain
- You may freely distribute the URL identifying the publication in the Research Portal

Take down policy

If you believe that this document breaches copyright please contact librarypure@kcl.ac.uk providing details, and we will remove access to the work immediately and investigate your claim.

Structural and functional effects of myosin binding protein-C phosphorylation in heart muscle are not mimicked by serine-to-aspartate substitutions

Thomas Kampourakis*, Saraswathi Ponnamp, Yin-Biao Sun, Ivanka Sevriva, and Malcolm Irving

Randall Centre for Cell and Molecular Biophysics, and British Heart Foundation Centre of Research Excellence, School of Basic and Medical Biosciences, King's College London, SE1 1UL

Running Title: *Serine-to-aspartate substitutions in cMyBP-C*

*To whom correspondence should be addressed: Thomas Kampourakis: Randall Centre for Cell and Molecular Biophysics, and British Heart Foundation Centre of Research Excellence, School of Basic and Medical Biosciences, King's College London, SE1 1UL; thomas.kampourakis@kcl.ac.uk; Tel.(020) 7848 6575

Keywords: myosin; cardiac muscle regulation; myosin binding protein-C; polarized fluorescence; protein phosphorylation; phosphomimetic; myofibril; muscle fibre; tris-phosphorylation

ABSTRACT

Myosin-binding protein-C (cMyBP-C) is a key regulator of contractility in heart muscle, and its regulatory function is controlled in turn by phosphorylation of multiple serines in its m-domain. The structural and functional effects of m-domain phosphorylation have often been inferred from those of the corresponding serine-to-aspartate (S–D) substitutions, in both *in vivo* and *in vitro* studies. Here, using a combination of *in vitro* binding assays and *in situ* structural and functional assays in ventricular trabeculae of rat heart and the expressed C1mC2 region of cMyBP-C, containing the m-domain flanked by domains C1 and C2, we tested whether these substitutions do in fact mimic the effects of phosphorylation. *In situ* changes in thin and thick filament structure were determined from changes in polarized fluorescence from bifunctional probes attached to troponin C or myosin regulatory light chain, respectively. We show that both the action of exogenous C1mC2 to activate contraction in the absence of calcium and the accompanying change in thin filament structure are abolished by tris-phosphorylation of the m-domain, but unaffected by the corresponding S–D substitutions. The latter produced an intermediate change in thick filament structure. Both tris-phosphorylation and S–D substitutions abolished the interaction between C1mC2 and myosin sub-fragment 2 (myosin S2) *in vitro*, but

yielded different effects on thin filament binding. These results suggest that some previous inferences from the effects of S–D substitutions in cMyBP-C should be reconsidered and that the distinct effects of tris-phosphorylation and S–D substitutions on cMyBP-C may provide a useful basis for future studies.

Phosphorylation of cardiac myosin binding protein-C (cMyBP-C) is an important determinant of cardiac muscle function, and ablation of cMyBP-C phosphorylation has frequently been associated with heart failure, further underlining its functional significance (1). cMyBP-C is phosphorylated *in vivo* (2) and is a substrate for multiple protein kinases that target conserved serine residues in the m-domain or m-motif that links the C1 and C2 Ig domains (Fig. 1A) (3). Phosphorylation of these residues controls the interaction of the N-terminal region of cMyBP-C with both the myosin-containing thick and the actin-containing thin filaments (4). Interactions of cMyBP-C's N-terminal domains with myosin are thought to have mainly inhibitory effects on contractility by stabilizing the thick filament OFF state, characterized by myosin head domains bound to the filament core in quasi-helical tracks (5,6). In contrast, cMyBP-C-actin interactions have been frequently associated with an activating effect on contractility and thin

filament structure (5,7). Phosphorylation of cMyBP-C has been shown to abolish these regulatory interactions and therefore modulate cardiac contractility via changes in the thick and thin filament regulatory state.

Serine to aspartate (S-D) substitutions of serine residues within the m-motif have often been used as a proxy for phosphorylation, *in vivo* in transgenic animal models (8,9), *in situ* in isolated cardiac muscle cells (10), and *in vitro* in isolated proteins (11,12). The assumption that S-D substitutions reproduce the effects of phosphorylation in cMyBP-C has generally not been critically examined. *In vivo* experiments on transgenic animal lines do not allow direct comparison of the effects of fully phosphorylated and S-D substituted cMyBP-C on cardiac muscle function. In contrast, *in vitro* experiments using isolated proteins allow some functional mechanisms to be characterized at the molecular level, but do not reproduce regulatory and contractile mechanisms that depend on the native lattice of thick and thin filaments.

In this study, we used bifunctional fluorescent probes on myosin regulatory light chain (RLC) or troponin C (TnC) to monitor structural changes in the thick and thin filaments respectively in rat heart muscle cells. We induced activation of the muscle cells using exogenous rat cardiac C1mC2 fragments that were native, tris-phosphorylated or carrying three S-D substitutions. We combined these structural measurements with measurements of active isometric force, and with biochemical characterization of the interaction between C1mC2 and myosin S2, and C1mC2 and native thin filaments (NTF) *in vitro*, to determine whether S-D substitutions reproduce the structural and functional effects of phosphorylation.

Results

Phospho-mimetic substitutions in C1mC2 do not abolish thin filament activation

N-terminal fragments of rat cardiac myosin binding protein-C containing the Ig-domains C1 and C2, and the intervening m-domain (C1mC2) are sufficient to activate contraction of demembrated rat ventricular trabeculae in the absence of Ca^{2+} , and tris-phosphorylation of C1mC2 by PKA (Protein Kinase A) abolishes this effect (5). This assay therefore enables a test of the ability of serine-to-aspartate (S-D) substitutions to act as phospho-mimetics for this mode of action of cMyBP-C. Trabeculae were incubated in relaxing solution (pCa 9) containing

40 $\mu\text{mol/L}$ unphosphorylated C1mC2, PKA tris-phosphorylated C1mC2 (C1mC2-3P; Fig. S1) or C1mC2 with three phosphorylatable serines mutated to aspartate (C1mC2-3SD) (Fig. 1). Incubation in C1mC2 produced an isometric force of $57 \pm 5\%$ (mean \pm SEM, $n=13$) of that during full Ca^{2+} activation (Fig. 1B), whereas C1mC2-3P produced no activation, as described previously (5). Strikingly, C1mC2-3SD activated contraction to the same extent as C1mC2 ($57 \pm 5\%$, mean \pm SEM, $n=13$). In complete contrast to phospho-serines, the S-D substitutions have no effect on the activating effect of C1mC2.

We used bifunctional (sulfo)rhodamine probes attached to either the E-helix of cardiac troponin C (BR-cTnC-E) or crosslinking helices B and C of cardiac myosin regulatory light chain (BSR-cRLC-BC) (Fig. S2) to monitor structural changes in the thin and thick filaments, respectively, in this assay. The cTnC E-helix is part of the IT-arm of troponin and its orientation is coupled to the position of tropomyosin on the surface of the thin filament. The order parameter $\langle P_2 \rangle$ describing the orientation of BR-cTnC-E decreases on calcium activation, suggesting a more perpendicular orientation of the E-helix (Fig. 1C). Incubation of BR-cTnC-E exchanged trabeculae in relaxing solution (pCa 9) containing 40 $\mu\text{mol/L}$ C1mC2 induced a change in thin filament structure reported by the TnC E-helix probe that is significantly larger than that during full calcium activation, as reported previously (5). In contrast with unphosphorylated C1mC2, C1mC2-3P had no effect on thin filament structure. However C1mC2-3SD had the same effect as C1mC2 (Fig. 1C). Thus, in full agreement with the functional effects described above, the S-D substitutions do not reproduce the effect of tris-phosphorylation of C1mC2 on thin filament structure.

The RLC BC-helix probe is mainly sensitive to the regulatory state of the thick filament (13), and $\langle P_2 \rangle$ for this probe increases on calcium activation (Fig. 1D). Incubation of BSR-cRLC-BC exchanged trabeculae in 40 $\mu\text{mol/L}$ C1mC2 induced a change in BSR-cRLC-BC probe orientation of $\sim 70\%$ of that for calcium activation, whereas C1mC2-3P produced no significant change in probe orientation. C1mC2-3SD had an intermediate effect.

The above results show that the S-D substitutions in C1mC2 do not mimic the effects of tris-phosphorylation for the active force and accompanying effects on thin and thick filament

structure induced by C1mC2 in the absence of calcium. For active force and thin filament structure, the action of C1mC2-3SD was indistinguishable from that of the native fragment. For thick filament structure, the effect was intermediate, suggesting the possibility that S-D substitutions in the m-domain might mimic phosphorylation of these residues with respect to the direct action of C1mC2 on thick but not thin filament structure, in the light of previous evidence for coupling between the regulatory states of the thin and thick filaments (5,14).

Phospho-mimetic substitutions in C1mC2 alter thin filament interaction and abolish binding to myosin S2

We used high-velocity co-sedimentation to determine the effects of phosphorylation and S-D substitutions in C1mC2 on binding to isolated native thin filaments (NTF). The unphosphorylated C1mC2 binds NTFs in a saturable manner with a K_d of $23 \pm 7 \mu\text{mol/L}$ (mean \pm SEM, $n=7$) and B_{max} of $0.81 \pm 0.10 \text{ mol/mol}$, suggesting roughly stoichiometric binding of C1mC2 to actin (Fig. 2A). PKA tris-phosphorylation of C1mC2 increased K_d to $57 \pm 5 \mu\text{mol/L}$ (mean \pm SEM, $n=8$) and reduced B_{max} to $0.67 \pm 0.06 \text{ mol/mol}$, indicating reduced binding to NTFs *in vitro*, in agreement with previously published results (15). C1mC2-3SD (Fig. 2A, purple) binds NTFs with a K_d of $16 \pm 5 \mu\text{mol/L}$, (mean \pm SEM, $n=4$), similar to that of unphosphorylated C1mC2, but with a significantly lower B_{max} , $0.51 \pm 0.06 \text{ mol/mol}$.

Next we tested whether S-D substitutions mimic the effect of phosphorylation of m-domain serines on the binding of C1mC2 to myosin S2 Δ , the first 126 amino acids of myosin S2 (16) by Microscale Thermophoresis (MST). Binding of C1mC2 to myosin S2 Δ is strongly temperature-dependent. At 21°C K_d was $\sim 100 \mu\text{mol/L}$, but at 30°C it was reduced to $\sim 20 \mu\text{mol/L}$, in agreement with previous results (16) (Fig. S3; Tab. 1). Moreover, the binding curve is biphasic, indicating an additional low affinity binding interaction with an estimated K_d of $\sim 400 \mu\text{mol/L}$ (arrow head in Fig. S3).

As a step towards localising the binding interactions between cMyBP-C and myosin S2 Δ , we measured the binding affinity for myosin S2 Δ to the isolated m-motif, and to a construct containing Ig domains C1 and C2 connected by a flexible linker (C1-C2), i.e. with the m-motif deleted (Fig. 2B; Tab. 1). The m-motif alone

binds myosin S2 Δ with a K_d of $\sim 40 \mu\text{mol/L}$, indicating that it is the main interaction site between C1mC2 and myosin S2 Δ . In contrast C1-C2 binds myosin S2 Δ with a K_d of $\sim 500 \mu\text{mol/L}$, suggesting that the flanking C1 and C2 domains are responsible for the low-affinity binding sites in C1mC2 and only have a small contribution to C1mC2 binding to myosin S2 Δ .

Increasing ionic strength greatly reduced the affinity of C1mC2 for myosin S2 Δ (Fig. 2C; Tab. 1), suggesting that the interaction between the m-motif and myosin S2 Δ is mainly ionic. Consistent with that interpretation, binding of the isolated m-motif to myosin S2 Δ was largely abolished at the higher ionic strength.

Both PKA tris-phosphorylation and replacement of the three phosphorylatable serines by aspartate abolished the high affinity interaction between C1mC2 and myosin S2 Δ (Figs. 2D and S4; Tab. 1), as expected for the largely ionic nature of the high affinity binding site in the m-motif.

Discussion

The results presented above show that serine-to-aspartate substitution of the three phosphorylation sites in the m-motif of cMyBP-C fully mimic the effects of phosphorylation of those sites with respect to binding to myosin S2 Δ but fail to mimic its effects on the interaction between cMyBP-C and the thin filament. The ionic strength dependence of the binding between cMyBP-C and myosin S2 suggests that it is mainly driven by ionic interactions between the m-motif and myosin S2 Δ , consistent with the fact that it can be abolished by the introduction of additional negative charges, by either phosphorylation or S-D substitutions. In contrast, regulatory interactions of cMyBP-C with NTFs have been localized to both domain C1 and the m-motif (17). Phosphorylation of the m-motif serines appears to control these regulatory interactions by altering C1mC2 structure (18), in a way that is not efficiently mimicked by S-D substitutions. Although S-D substitutions reduce the binding capacity of C1mC2 to NTFs to a similar extent to that observed for the effects of PKA phosphorylation on the native protein, they do not affect K_d and thin filament activation, suggesting that phosphorylation might affect thin filament activation via a structural change communicated between the m-motif and domain C1 (15).

These results in combination with previous work therefore suggest that: unphosphorylated native

cMyBP-C binds to both the thin and thick filaments (Fig. 3A), stabilizing their ON and OFF states respectively; cMyBP-C phosphorylation abolishes both regulatory interactions, so that myosin heads are released from the thick filament backbone but the thin filament is OFF (Fig. 3B), and substitution of the phosphorylatable serines by aspartates releases the myosin heads from the thick filament backbone without affecting the regulatory interaction with the thin filament (Fig 3C), therefore stabilizing the ON state of both thin and thick filaments. It follows that it could be quite misleading to interpret the effects of S-D substitutions in cMyBP-C as reproducing the structural or functional effects of tris-phosphorylation of cMyBP-C *in vitro* or *in vivo*. On the other hand the differential effects of S-D substitutions and tris-phosphorylation on the thin- and thick-filament interactions of cMyBP-C may provide a useful approach to dissect the effects of those interactions in future studies.

Experimental procedures

Preparation of bifunctional rhodamine labelled cRLC and cTnC, and exchange into demembranated rat ventricular trabeculae

Wistar rats (male, 200-250 g) were sacrificed by cervical dislocation (Schedule 1 procedure in accordance with UK Animal Scientific Procedure Act, 1986) and demembranated right ventricular trabeculae were prepared as described previously (19). All procedures were carried out in accordance with the guidelines of the Animal Welfare and Ethical Review Body (AWERB, King's College London). All animals were treated in accordance with the guidelines approved by the UK Animal Scientific procedures ACT (1986) and European Union Directive 2010/63/EU.

Bifunctional sulforhodamine (BSR) labelled RLCs and bifunctional rhodamine (BR) labelled TnCs were prepared as previously described (5,19). BSR-cRLCs were exchanged into demembranated trabeculae by extraction in CDTA-rigor solution (composition in mmol/L: 5 CDTA, 50 KCl, 40 Tris-HCl, 0.1% (v/v) Triton X-100, pH 8.4) for 30 min followed by reconstitution with 40 μ mol/L BSR-cRLC in relaxing solution for 1 h at 22°C, replacing ~50% of the endogenous RLC (5). BR-cTnCs were exchanged by overnight soak on ice of demembranated trabeculae in relaxing solution containing 0.5 mg/ml BR-cTnCs, replacing ~70% of the endogenous TnCs (20).

Protein preparation and phosphorylation

All proteins were cloned from a rat cDNA library (BioChain) into a modified pET6a vector fused to an N-terminal hexa-histidine-tag followed by TEV cleavage site. C1mC2 serine-to-aspartate (S-D) mutations were introduced according to previously published protein primary sequences (8) and introduced by site-directed mutagenesis. Protein constructs were expressed in BL21(DE3)-RIPL cells (Agilent Technologies) followed by affinity chromatography on HisTrapFF columns (GE Healthcare) and removal of the tag-sequence by TEV protease treatment. Proteins were further purified by ion-exchange chromatography (IEC) on MonoS columns (GE Healthcare), concentrated to >100 μ mol/L, snap frozen in liquid nitrogen and stored in aliquots at -80°C for experiments. Myosin S2 Δ was cloned from a rat heart cDNA library (BioChain) into a modified pET6a vector, and expressed and purified as described above, except that IEC was instead performed on a MonoQ column. Purity was estimated by SDS-PAGE and ESI mass spectrometry to >95%. C1mC2 was phosphorylated by protein kinase A (PKA) and purified as described previously (5). Briefly, 50 μ mol/L C1mC2 in PKA assay buffer (composition in mmol/L: 20 Tris-HCl, 50 NaCl, 2 MgCl₂, 0.1 EDTA, 1 DTT) was incubated with 2000 U/ml of the catalytic subunit of PKA for 30-60 min at 30°C. The reaction was followed by PhostagTM-SDS-PAGE and ESI mass spectrometry (Fig. S1). The mainly tris-phosphorylated C1mC2 was further purified by IEC on MonoS, and homogeneity determined by PhostagTM-SDS-PAGE and ESI mass spectrometry to be >95%. Prolonged incubation of C1mC2-3P with demembranated trabeculae did not result in any significant protein dephosphorylation (Fig. S1B). For experiments, aliquots of proteins were thawed on ice, and gel-filtered and dialysed against new buffer prior to each experiment.

Fluorescence polarization experiments

Activation protocols and composition of experimental solutions were identical to those described previously for fluorescence polarization experiments (21). Polarized fluorescence intensities were measured as described previously for skeletal and cardiac muscle fibres. Trabeculae were mounted between a strain gauge force transducer (KRONEX, Oakland, California 94602, USA; model A-801,

resonance frequency ~2 kHz) and motor (Aurora Scientific, Dublin, D6WY006, Ireland; Model 312C). Fluorescence emission from BSR-cRLCs and BR-cTnCs in trabeculae was collected by a 0.25 N.A. objective using an excitation light beam in line with the emission path. The polarization of the excitation and emitted beams was set either parallel or perpendicular to the trabecular axis, allowing determination of the order parameter $\langle P_2 \rangle$ that describes the dipole orientations in the trabeculae (22). The sarcomere length of trabeculae was measured by laser diffraction in relaxing solution prior to each activation. Activating solution contained (in mmol/L): 25 imidazole, 15 Na₂CrP, 58.7 KPr, 5.65 Na₂ATP, 6.3 MgCl₂, 10 CaCl₂, 10 K₂EGTA, 1 DTT, pH 7.1. Each activation was preceded by a 2-min incubation in pre-activating solution (composition in mmol/L: 25 imidazole, 15 Na₂CrP, 108.2 KPr, 5.65 Na₂ATP, 6.3 MgCl₂, 0.2 K₂EGTA, 1 DTT, pH 7.1). Isometric force and steady-state fluorescence polarization values were measured once steady force had been established.

Native thin filament co-sedimentation

Native thin filaments (NTF) were prepared according to previously published protocols (23) and co-sedimentation experiments performed as described in (15).

Microscale thermophoresis

Microscale thermophoresis experiments were performed on a Monolith NT.115 instrument (NanoTemper, Cambridge CB3 0AX, United Kingdom) in interaction buffer containing 20 mmol/L MOPS pH 7, 1 mmol/L EDTA, 50 mmol/L KCl, 1 mmol/L DTT and 0.05% (v/v) Tween-20. Myosin S2Δ was labelled with Alexa 647-NHS (Molecular Probes Inc, Thermo Fischer Scientific, Paisley, PA4 9RF, United Kingdom) according to manufacturer's instructions, and dye incorporation (efficiency of ~80%) confirmed by HPLC and ESI-mass spectrometry. All proteins were either gel-filtered into and/or extensively dialysed against interaction buffer. Titration experiments were performed with a fixed Alexa 647 – myosin S2Δ concentration of 100 nmol/L in standard treated capillaries. For experiments with isolated m-motif, the pH of the MST buffer was adjusted to 6.2 and experiments were performed in enhanced gradient standard capillaries.

Statistical analysis

Statistical significance of difference between groups was assessed with a one-way ANOVA followed by Turkey's post-hoc test. Details of significance levels are shown in the figure captions.

Acknowledgements

We are grateful to the British Heart Foundation for financial support. We further thank David Trentham and Mathias Gautel for help and advice.

Conflict of interest

The authors declare that they have no conflicts of interest with the contents of this article.

Author contributions

TK designed research; TK and SP performed research; IS and YBS contributed new reagents/analytic tools; TK, SP and MI analysed data; and TK and MI wrote the paper.

References

1. Sadayappan, S., Gulick, J., Osinska, H., Martin, L. A., Hahn, H. S., Dorn, G. W., 2nd, Klevitsky, R., Seidman, C. E., Seidman, J. G., and Robbins, J. (2005) Cardiac myosin-binding protein-C phosphorylation and cardiac function. *Circulation research* **97**, 1156-1163
2. Copeland, O., Sadayappan, S., Messer, A. E., Steinen, G. J., van der Velden, J., and Marston, S. B. (2010) Analysis of cardiac myosin binding protein-C phosphorylation in human heart muscle. *Journal of molecular and cellular cardiology* **49**, 1003-1011
3. Bardswell, S. C., Cuello, F., Rowland, A. J., Sadayappan, S., Robbins, J., Gautel, M., Walker, J. W., Kentish, J. C., and Avkiran, M. (2010) Distinct sarcomeric substrates are responsible for protein kinase D-mediated regulation of cardiac myofilament Ca²⁺ sensitivity and cross-bridge cycling. *The Journal of biological chemistry* **285**, 5674-5682
4. Pfuhl, M., and Gautel, M. (2012) Structure, interactions and function of the N-terminus of cardiac myosin binding protein C (MyBP-C): who does what, with what, and to whom? *Journal of muscle research and cell motility* **33**, 83-94
5. Kampourakis, T., Yan, Z., Gautel, M., Sun, Y. B., and Irving, M. (2014) Myosin binding protein-C activates thin filaments and inhibits thick filaments in heart muscle cells. *Proceedings of the National Academy of Sciences of the United States of America* **111**, 18763-18768
6. Kensler, R. W., Craig, R., and Moss, R. L. (2017) Phosphorylation of cardiac myosin binding protein C releases myosin heads from the surface of cardiac thick filaments. *Proceedings of the National Academy of Sciences of the United States of America* **114**, E1355-E1364
7. Mun, J. Y., Previs, M. J., Yu, H. Y., Gulick, J., Tobacman, L. S., Beck Previs, S., Robbins, J., Warshaw, D. M., and Craig, R. (2014) Myosin-binding protein C displaces tropomyosin to activate cardiac thin filaments and governs their speed by an independent mechanism. *Proceedings of the National Academy of Sciences of the United States of America* **111**, 2170-2175
8. Sadayappan, S., Osinska, H., Klevitsky, R., Lorenz, J. N., Sargent, M., Molkenin, J. D., Seidman, C. E., Seidman, J. G., and Robbins, J. (2006) Cardiac myosin binding protein C phosphorylation is cardioprotective. *Proceedings of the National Academy of Sciences of the United States of America* **103**, 16918-16923
9. Sadayappan, S., Gulick, J., Klevitsky, R., Lorenz, J. N., Sargent, M., Molkenin, J. D., and Robbins, J. (2009) Cardiac myosin binding protein-C phosphorylation in a {beta}-myosin heavy chain background. *Circulation* **119**, 1253-1262
10. Kumar, M., Govindan, S., Zhang, M., Khairallah, R. J., Martin, J. L., Sadayappan, S., and de Tombe, P. P. (2015) Cardiac Myosin-binding Protein C and Troponin-I Phosphorylation Independently Modulate Myofilament Length-dependent Activation. *The Journal of biological chemistry* **290**, 29241-29249
11. Previs, M. J., Prosser, B. L., Mun, J. Y., Previs, S. B., Gulick, J., Lee, K., Robbins, J., Craig, R., Lederer, W. J., and Warshaw, D. M. (2015) Myosin-binding protein C corrects an intrinsic inhomogeneity in cardiac excitation-contraction coupling. *Science advances* **1**
12. Previs, M. J., Mun, J. Y., Michalek, A. J., Previs, S. B., Gulick, J., Robbins, J., Warshaw, D. M., and Craig, R. (2016) Phosphorylation and calcium antagonistically tune myosin-binding protein C's structure and function. *Proceedings of the National Academy of Sciences of the United States of America* **113**, 3239-3244
13. Kampourakis, T., Sun, Y. B., and Irving, M. (2016) Myosin light chain phosphorylation enhances contraction of heart muscle via structural changes in both thick and thin filaments. *Proceedings of the National Academy of Sciences of the United States of America*
14. Kampourakis, T., Zhang, X., Sun, Y. B., and Irving, M. (2018) Omecamtiv mercabil and blebbistatin modulate cardiac contractility by perturbing the regulatory state of the myosin filament. *The Journal of physiology* **596**, 31-46
15. Shaffer, J. F., Kensler, R. W., and Harris, S. P. (2009) The myosin-binding protein C motif binds to F-actin in a phosphorylation-sensitive manner. *The Journal of biological chemistry* **284**, 12318-12327

16. Gruen, M., and Gautel, M. (1999) Mutations in beta-myosin S2 that cause familial hypertrophic cardiomyopathy (FHC) abolish the interaction with the regulatory domain of myosin-binding protein-C. *J. Mol. Biol.* **286**, 933-949
17. Harris, S. P., Belknap, B., Van Sciver, R. E., White, H. D., and Galkin, V. E. (2016) C0 and C1 N-terminal Ig domains of myosin binding protein C exert different effects on thin filament activation. *Proceedings of the National Academy of Sciences of the United States of America* **113**, 1558-1563
18. Colson, B. A., Thompson, A. R., Espinoza-Fonseca, L. M., and Thomas, D. D. (2016) Site-directed spectroscopy of cardiac myosin-binding protein C reveals effects of phosphorylation on protein structural dynamics. *Proceedings of the National Academy of Sciences of the United States of America* **113**, 3233-3238
19. Sun, Y. B., Lou, F., and Irving, M. (2009) Calcium- and myosin-dependent changes in troponin structure during activation of heart muscle. *The Journal of physiology* **587**, 155-163
20. Sevrieva, I., Knowles, A. C., Kampourakis, T., and Sun, Y. B. (2014) Regulatory domain of troponin moves dynamically during activation of cardiac muscle. *Journal of molecular and cellular cardiology* **75**, 181-187
21. Kampourakis, T., Ponnampalani, S., and Irving, M. (2018) Hypertrophic cardiomyopathy mutation R58Q in the myosin regulatory light chain perturbs thick filament-based regulation in cardiac muscle. *Journal of molecular and cellular cardiology* **117**, 72-81
22. Dale, R. E., Hopkins, S. C., an der Heide, U. A., Marszalek, T., Irving, M., and Goldman, Y. E. (1999) Model-independent analysis of the orientation of fluorescent probes with restricted mobility in muscle fibers. *Biophysical journal* **76**, 1606-1618
23. Spiess, M., Steinmetz, M. O., Mandinova, A., Wolpensinger, B., Aebi, U., and Atar, D. (1999) Isolation, electron microscopic imaging, and 3-D visualization of native cardiac thin myofilaments. *Journal of structural biology* **126**, 98-104

FOOTNOTES

This study was supported by a British Heart Foundation Basic Science Intermediate Fellowship (FS/16/3/31887) to TK.

The abbreviations used are: BSR, bifunctional sulphorhodamine; C1mC2, fragments of cardiac myosin binding protein-C containing the Ig-domains C1 and C2, and the intervening m-domain; cMyBP-C, cardiac isoform of myosin binding protein-C; cRLC, cardiac isoform of myosin regulatory light chain; cTnC cardiac isoform of troponin C; IT-arm, core domain of troponin containing troponin I and troponin T; PKA, protein kinase A; PKA, Protein Kinase A or cAMP-dependent protein kinase; S-D, serine-to-aspartate

Tables and Table Legends

Table 1. Summary of equilibrium dissociation constants (K_d) for different cMyBP-C constructs for myosin S2 Δ as measured by Microscale Thermophoresis.

Ligand	T [°C]	KCl [mmol/L]	K_d [μ mol/L]
C1mC2	21	50	106.2 \pm 11.2
	25	50	58.5 \pm 8.5
	30	50	21.3 \pm 3.5
	30	180	364.5 \pm 10.6
C1-C2	30	50	477.4 \pm 6.7
m-motif	30	50	41.1 \pm 2.3
	30	180	cd
C1mC2-3P	30	50	cd
C1mC2-3SD	30	50	cd

Means \pm SEM (n=4-6). cd - K_d cannot not be reliably determined

Figures and Figure Legends

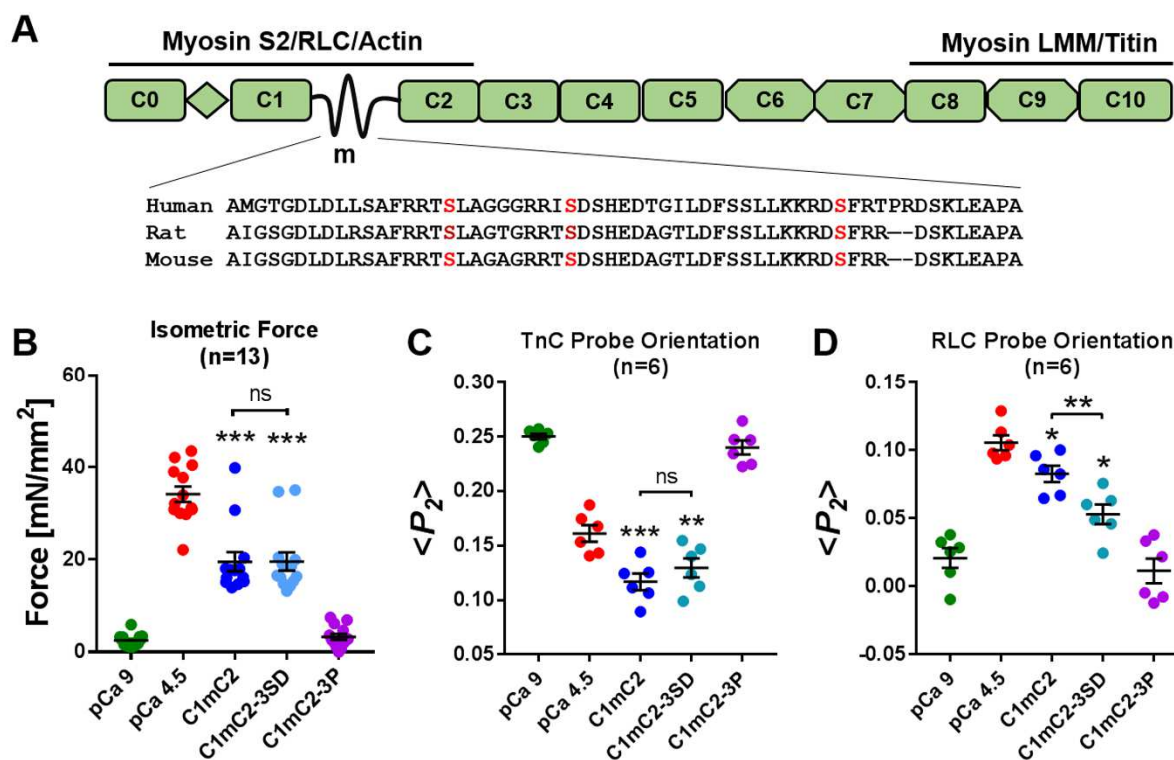


Figure 1. Effect of phospho-mimetic substitutions in cMyBP-C on isometric force, and thin and thick filament structure in cardiac muscle. (A) Schematic of cMyBP-C's domain organisation and known protein interactions, with a sequence alignment for the cardiac specific m-motif containing the phosphorylatable serine residues (LMM, light mero-myosin; RLC, regulatory light chain; myosin S2, myosin sub-fragment 2). (B) Isometric force, (C) TnC probe orientation and (D) RLC probe orientation of ventricular trabeculae in relaxing conditions (pCa 9, green), at full calcium activation (pCa 4.5, red), and during incubation in relaxing solution (pCa 9) containing 40 $\mu\text{mol/L}$ C1mC2 (blue), phospho-mimetic C1mC2-3SD (turquoise) or PKA tris-phosphorylated C1mC2-3P (purple). Mean \pm SEM with the number of trabeculae (n) indicated in each panel. Statistical significance of differences between groups was assessed with a one-way ANOVA followed by Turkey's post-hoc test: * $p < 0.05$, ** $p < 0.01$, *** $p < 0.001$, ns-not significant.

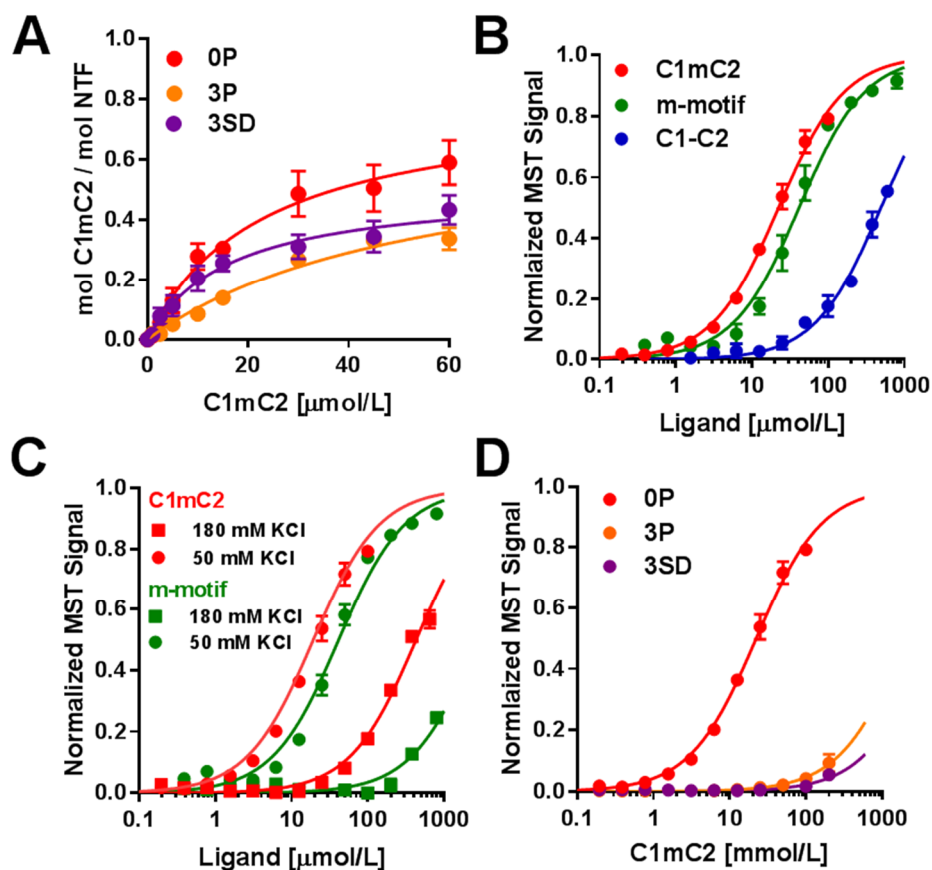


Figure 2. Binding of cMyBP-C N-terminal domains to native thin filaments (NTF) and myosin S2 Δ . (A) NTF co-sedimentation binding data for C1mC2 (red), C1mC2-3P (orange) and C1mC2-3SD (purple). (B) Normalized MST binding curves for C1mC2 (red), isolated m-motif (green) or C1-C2 (blue) titrated against myosin S2 Δ . (C) Normalized MST curves for C1mC2 (red) and m-motif (green) binding to myosin S2 Δ in the presence of 50 mM KCl (circles) and 180 mM KCl (squares). (D) Binding of C1mC2 (red), C1mC2-3P (orange) and C1mC2-3SD (purple) to myosin S2 Δ . For all experiments: Means \pm SEM, n=4-8.

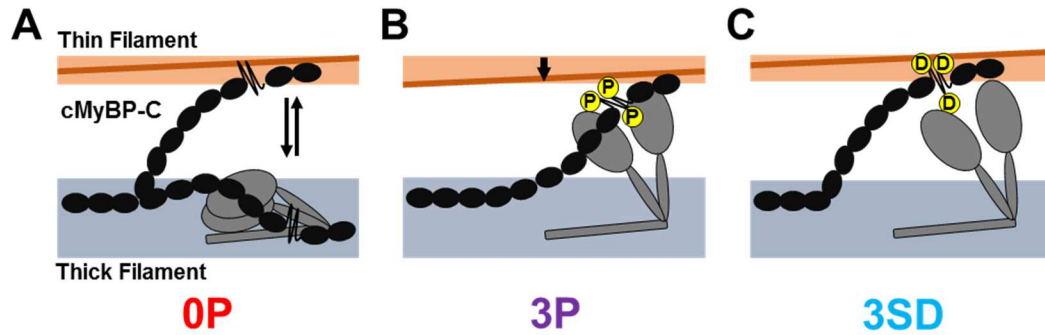


Figure 3. Model for the effect of phosphorylation or serine-aspartate substitutions on cMyBP-C function. (A) In the unphosphorylated state, cMyBP-C binds both thin and thick filaments stabilizing their ON and OFF states, respectively. cMyBP-C inhibits myosin head domains (grey) by stabilizing their folded OFF state and activates the thin filament by moving tropomyosin (brown) away from its blocked position towards the open position. (B) PKA tris-phosphorylation (P) abolishes both the activating and inhibitory effects of cMyBP-C on the thin and thick filament, respectively. (C) In contrast, serine-to-aspartate substitutions (D) abolish the inhibitory interaction between cMyBP-C and myosin, but do not abolish the activating interaction with the thin filament.

Structural and functional effects of myosin binding protein-C phosphorylation in heart muscle are not mimicked by serine-to-aspartate substitutions

Thomas Kampourakis, Saraswathi Ponnampalnam, Yin-Biao Sun, Ivanka Sevrieva and Malcolm Irving

J. Biol. Chem. published online August 6, 2018

Access the most updated version of this article at doi: [10.1074/jbc.AC118.004816](https://doi.org/10.1074/jbc.AC118.004816)

Alerts:

- [When this article is cited](#)
- [When a correction for this article is posted](#)

[Click here](#) to choose from all of JBC's e-mail alerts