



## King's Research Portal

DOI:

[10.1016/j.dcn.2018.11.004](https://doi.org/10.1016/j.dcn.2018.11.004)

*Document Version*

Peer reviewed version

[Link to publication record in King's Research Portal](#)

*Citation for published version (APA):*

Gooskens, B., Bos, D. J., Mensen, V. T., Shook, D. A., Bruchhage, M., Naaijen, J., Wolf, I., Brandeis, D., Williams, S. C. R., Buitelaar, J. K., Oranje, B., & Durston, S. (2018). No evidence of differences in cognitive control in children with Autism Spectrum Disorder or Obsessive-Compulsive Disorder: an fMRI study. *Developmental Cognitive Neuroscience*. <https://doi.org/10.1016/j.dcn.2018.11.004>

### **Citing this paper**

Please note that where the full-text provided on King's Research Portal is the Author Accepted Manuscript or Post-Print version this may differ from the final Published version. If citing, it is advised that you check and use the publisher's definitive version for pagination, volume/issue, and date of publication details. And where the final published version is provided on the Research Portal, if citing you are again advised to check the publisher's website for any subsequent corrections.

### **General rights**

Copyright and moral rights for the publications made accessible in the Research Portal are retained by the authors and/or other copyright owners and it is a condition of accessing publications that users recognize and abide by the legal requirements associated with these rights.

- Users may download and print one copy of any publication from the Research Portal for the purpose of private study or research.
- You may not further distribute the material or use it for any profit-making activity or commercial gain
- You may freely distribute the URL identifying the publication in the Research Portal

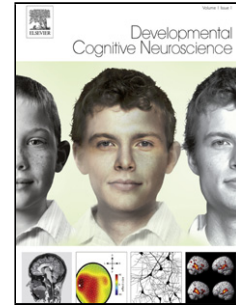
### **Take down policy**

If you believe that this document breaches copyright please contact [librarypure@kcl.ac.uk](mailto:librarypure@kcl.ac.uk) providing details, and we will remove access to the work immediately and investigate your claim.

## Accepted Manuscript

Title: No evidence of differences in cognitive control in children with Autism Spectrum Disorder or Obsessive-Compulsive Disorder: an fMRI study

Authors: Bram Gooskens, Dienke J. Bos, Vincent T. Mensen, Devon A. Shook, Muriel Bruchhage, Jill Naaijen, Isabella Wolf, Daniel Brandeis, Steven C.R. Williams, Jan K. Buitelaar, Bob Oranje, Sarah Durston, the TACTICS consortium



PII: S1878-9293(18)30110-5  
DOI: <https://doi.org/10.1016/j.dcn.2018.11.004>  
Reference: DCN 602

To appear in:

Received date: 30 May 2018  
Revised date: 5 October 2018  
Accepted date: 26 November 2018

Please cite this article as: Gooskens B, Bos DJ, Mensen VT, Shook DA, Bruchhage M, Naaijen J, Wolf I, Brandeis D, Williams SCR, Buitelaar JK, Oranje B, Durston S, No evidence of differences in cognitive control in children with Autism Spectrum Disorder or Obsessive-Compulsive Disorder: an fMRI study, *Developmental Cognitive Neuroscience* (2018), <https://doi.org/10.1016/j.dcn.2018.11.004>

This is a PDF file of an unedited manuscript that has been accepted for publication. As a service to our customers we are providing this early version of the manuscript. The manuscript will undergo copyediting, typesetting, and review of the resulting proof before it is published in its final form. Please note that during the production process errors may be discovered which could affect the content, and all legal disclaimers that apply to the journal pertain.

**No evidence of differences in cognitive control in children with Autism Spectrum****Disorder or Obsessive-Compulsive Disorder: an fMRI study**

Bram Gooskens,<sup>1</sup> Dienne J. Bos,<sup>1</sup> Vincent T. Mensen,<sup>1</sup> Devon A. Shook,<sup>1</sup> Muriel Bruchhage,<sup>2</sup> Jill Naaijen,<sup>3</sup> Isabella Wolf,<sup>4</sup> Daniel Brandeis,<sup>4,5,6,7,8</sup> Steven C.R. Williams,<sup>2</sup> Jan K. Buitelaar,<sup>3,9</sup> Bob Oranje,<sup>1</sup> Sarah Durston<sup>1</sup> and the TACTICS consortium

**Affiliations:**

<sup>1</sup> Department of Psychiatry, Brain Center Rudolf Magnus, University Medical Center Utrecht, Utrecht University, Utrecht, The Netherlands

<sup>2</sup> Department of Neuroimaging, King's College London, Institute of Psychiatry, Psychology and Neuroscience, London, UK

<sup>3</sup> Department of Cognitive Neuroscience, Donders Institute of Brain, Cognition and Behaviour, Radboud University Medical Center, Nijmegen, The Netherlands

<sup>4</sup> Department of Child and Adolescent Psychiatry and Psychotherapy, Central Institute of Mental Health, Medical Faculty, Mannheim/Heidelberg University, Mannheim, Germany

<sup>5</sup> Department of Child and Adolescent Psychiatry and Psychotherapy, Psychiatric Hospital, University of Zurich, Zurich, Switzerland

<sup>6</sup> Center for Integrative Human Physiology, University of Zurich, Zurich, Switzerland

<sup>7</sup> Neuroscience Center Zurich, University of Zurich, Zurich, Switzerland

<sup>8</sup> ETH Zurich, Zurich, Switzerland

<sup>9</sup> Karakter Child and Adolescent Psychiatry University Center, Nijmegen, The Netherlands

**Corresponding author:** Bram Gooskens, b.gooskens@umcutrecht.nl, Department of Psychiatry, Brain Center Rudolf Magnus, University Medical Center Utrecht, Heidelberglaan 100, 3584 CX, Utrecht, tel: 088 75 59839, fax: 088 75 554 38

**Word count: 5012 (including in-text citations)**

Figures: 3

Tables: 2

Supplemental material: 4

ACCEPTED MANUSCRIPT

### Abstract

Repetitive behaviors are among the core symptoms of both Autism Spectrum Disorder (ASD) and Obsessive-Compulsive Disorder (OCD) and are thought to be associated with impairments in cognitive control. However, it is still unknown how deficits in cognitive control and associated neural circuitry relate to the quality or severity of repetitive behavior in children with these disorders. Therefore, we investigated the behavioral and neural correlates of cognitive control using a modified stop-signal task in a multicenter study of children (aged 8 – 12 years) with ASD, OCD and typically developing (TD) children ( $N = 95$ ). As both ASD and OCD have high levels of comorbidity with Attention Deficit/Hyperactivity Disorder (ADHD), we did an exploratory analysis addressing ADHD-symptoms. We found that children with ASD and OCD did not show deficits in cognitive control or changes in brain activity in task-relevant neural networks when compared to TD children. However, increased activity in prefrontal brain areas was associated with increased symptoms of comorbid ADHD. As such, this study does not support differences in cognitive control or associated neural circuitry in children with ASD and OCD, but rather suggests that changes in cognitive control in these disorders may be related to symptoms of comorbid ADHD.

**Keywords:** Autism Spectrum Disorder, Obsessive-Compulsive Disorder, compulsive behavior, cognitive control, Attention Deficit/Hyperactivity Disorder, fMRI

## 1. Introduction

Repetitive behaviors are among the core symptoms of neurodevelopmental disorders such as Autism Spectrum Disorder (ASD) and Obsessive-Compulsive Disorder (OCD) (American Psychiatric Association [APA], 2013). ASD has an estimated prevalence of 1%, OCD has prevalence rates estimated between 1 and 3% in children and young adolescents (Baxter et al., 2015; Flament et al., 1988; Valleni-Basile et al., 1994). Although ASD and OCD are distinct disorders, it has been noted that children with ASD show increased rates of obsessive-compulsive symptoms (Leyfer et al., 2006) and vice versa, individuals with OCD often show symptoms of autism (Ivarsson & Melin, 2008). As such, it has been suggested that obsessive-compulsive symptoms in ASD and OCD may have common neurobiological characteristics (Jiujiu et al., 2017).

Yet, while there appear to be quantitative similarities, there are simultaneous qualitative differences in the repetitive behaviors of individuals with ASD and OCD (Zandt et al., 2007; 2009). For instance, individuals with ASD show more stereotyped repetitive behaviors, such as hoarding, touching and tapping behaviors, and these seem to sometimes have a positively reinforcing function. Conversely, individuals with OCD often have recurrent intrusive and distressing thoughts (obsessions) and repetitive mental and behavioral rituals (compulsions) such as checking, repeating and counting behaviors, that may serve to reduce anxiety (McDougle et al., 1995; Zandt et al., 2007). This suggests that in addition to common neural circuits, there may also be distinct, disorder-specific pathways involved in the repetitive behaviors seen in ASD and OCD.

Cognitive control is a broad concept including many behaviors related to the ability to regulate one's behavior, for example by stopping or suppressing ongoing behavior when it is no longer appropriate or required. This ability is crucial for successfully navigating the demands of daily life. Previous work has suggested that repetitive behavior in ASD and OCD may be related to impairments in cognitive control (Chamberlain et al., 2005; Hill, 2004;

Moritz et al., 2002; Mosconi et al., 2009; Snyder et al., 2015), yet it has been challenging to find a consistent relation between repetitive behavior and cognitive control in ASD and OCD. Findings from studies investigating cognitive control in ASD using varying tasks have been inconsistent, with many reporting no deficits in ASD (Geurts et al., 2009; Yerys, 2015). To complicate matters further, both ASD and OCD have high levels of comorbidity with Attention Deficit/Hyperactivity Disorder (ADHD) (Abramovitch et al., 2015; Masi et al., 2007; Stevens et al., 2016; Grzadzinski et al., 2016; Mayes et al., 2012) and the neural circuits involved have been suggested to overlap (e.g. Ameis et al. 2016; Norman et al. 2016). As such, one hypothesis may be that differences in cognitive control in OCD and ASD may in part be driven by elevated symptoms of comorbid ADHD.

The stop-signal task has proven successful in assessing a specific aspect of cognitive control, the ability to withhold an already initiated motor response (Logan & Cowan, 1984; Verbruggen & Logan, 2008), especially in ADHD (Lyszczyk & Schachar, 2010). This task can be used to estimate the stop-signal reaction time (SSRT), an indicator of the speed of the stopping process. Findings in OCD and ASD using this task have been mixed: increased SSRTs have been reported for individuals with OCD (Chamberlain et al., 2007; Kang et al., 2012; Mancini et al., 2018; Penadés et al., 2007; de Wit et al., 2012) and children with ASD (Geurts et al., 2004; Lemon et al., 2011), while other studies have found no differences (Adams & Jarold, 2012; Chantiluke et al., 2015; Fan et al., 2017; Ozonoff & Strayer, 1997; Schmitt et al., 2017). Furthermore, associations between SSRT and symptom severity in OCD have been reported (Berlin & Lee, 2018; Mancini et al., 2018).

Similarities and differences in the neural signatures of OCD and ASD were recently reviewed by Carlisi and colleagues (2017). Both OCD and ASD were associated with reduced activation and gray matter volume of the dorsal anterior cingulate cortex (dACC) and medial prefrontal cortex (mPFC). Disorder-specific effects were found in basal ganglia and insula. These findings suggest that broadly, changes in frontostriatal and frontoinsular circuitry may underlie phenotypic overlap and distinctions between OCD and ASD. Yet, in

children with ASD and OCD the neural correlates of changes in SSRT are unclear. To date, only one neuroimaging study has used the stop-signal task in ASD, and reported greater activation in left and right inferior frontal cortex compared to controls (Chantiluke et al., 2015). In OCD, there is some evidence for decreased activation of the cortico-striatal-thalamo-cortical (CSTC) loop, including the dorsolateral prefrontal cortex (DLPFC), inferior frontal gyrus (IFG), striatum and thalamus in children (Rubia et al., 2010; Woolley et al., 2008) and adults (Kang et al., 2012; de Wit et al., 2012) with the disorder.

In the current study, we set out to investigate shared and distinct changes in cognitive control and associated frontostriatal neural circuitry in relation to the severity of repetitive behaviors in a sample of children with a primary diagnosis of ASD or OCD, and a group of age- and gender-matched typically developing children. We operationalized cognitive control as the ability to stop an ongoing response in the context of the stop-signal task, which was performed by all participants during fMRI. As it has proven challenging to recruit a sizeable sample of children with OCD, this study was performed within a multi-center collaborative initiative, the Translational Adolescent and Childhood Therapeutic Interventions in Compulsive Syndromes (TACTICS) consortium. We hypothesized that (1) children with ASD and OCD would show prolonged SSRTs compared to typically developing children, indicating reduced cognitive control; (2) children with ASD and OCD would show a pattern of shared and distinct changes in associated neural circuitry during performance of the stop-signal task; and (3) the severity of compulsive behavior in children with OCD and ASD would be related to increased SSRTs and reduced activation in frontostriatal cognitive control circuitry.

## **2. Methods**

The study was approved by local ethics committees for each site (Nijmegen and Utrecht: Commissie Mensgebonden Onderzoek Regio Arnhem-Nijmegen, 2013, NL nr:



42004.091.12; Mannheim: Ethics committee of the Medical Faculty Mannheim, Heidelberg University, 2013, nr: 213-616 N-MA; London: NRES Committee London - Camberwell St Giles, 2013, nr: 14/LO/1413).

## 2.1 Participants

We prescreened 212 participants and succeeded in including a total of 205 participants between 8 and 12 years of age in the study (ASD N = 62, OCD N = 42, TD = 101). We recruited participants at four different sites across Europe (King's College London, London, United Kingdom (N = 34); Central Institute of Mental Health, Medical Faculty Mannheim, University of Heidelberg Mannheim; Germany (N = 33); Radboud University Medical Center and the Donders Institute for Brain, Cognition and Behaviour, Nijmegen, The Netherlands (N = 101); Brain Center Rudolf Magnus, University Medical Center Utrecht, Utrecht, The Netherlands (N = 37)) that were commissioned by a multicenter study (COMPULS: Naaijen et al., 2016) as part of the overarching TACTICS collaborative initiative (<http://www.tactics-project.eu>).

Parents or legal representatives of all children provided signed informed consent and children provided verbal assent. Participants with ASD or OCD were diagnosed according to *The Diagnostic and Statistical Manual of Mental Disorders*, 4<sup>th</sup> edition, Text Revision (APA, 2000) or 5<sup>th</sup> edition criteria (APA, 2013). For children with ASD, the clinical diagnosis was confirmed by a trained psychologist at each site using the Autism Diagnostic Interview-Revised (ADI-R; Lord et al., 1994). For children with OCD, the Children's Yale-Brown Obsessive Compulsive Scale (CY-BOCS; Scahill et al., 1997) were collected to assess OCD symptom severity. This interview was also performed in participants with ASD if screening questions confirmed the presence of clinically significant obsessions or compulsions. In addition, all parents were interviewed using the structured Diagnostic Interview Schedule for Children (DISC-IV, parent version; Shaffer et al., 2000), the Development and Well-being Assessment (DAWBA; Goodman et al., 2000) or the Kiddie Schedule for Affective Disorders

and Schizophrenia (K-SADS; Kaufman et al., 1997) to assess the presence of possible comorbidities. Total Intellectual Quotient (IQ) was estimated using a shortened version of the Wechsler Intelligence Scale for Children (WISC-III; Wechsler, 2003). Repetitive behavior was assessed using the Repetitive Behavior Scale – Revised questionnaire (RBS-R; Bodfish et al., 2000). In addition, ADHD symptomatology was assessed using the Conners' Parent Rating Scale questionnaire (CPRS-R:L; Conners, 2000).

For both diagnostic groups, a concurrent diagnosis of the other disorder was an exclusion criterion (i.e. a comorbid OCD for a child with ASD, or vice versa). For the TD group, any psychiatric diagnosis for themselves or any first-degree relatives was an exclusion criterion. All included participants had a total IQ > 70 as well as sufficient comprehension and speaking abilities of the native language of the country in which the assessment took place. Finally, the presence of metal objects in the body (i.e. pacemaker, dental braces), neurological illness or other contra-indications for MRI-assessment were exclusion criteria for all groups. Six children (ASD N = 3, OCD N = 1, TD N = 2) dropped out after inclusion because of feeling anxious or claustrophobic when entering the MRI-scanner.

Four children with ASD were being treated with psychostimulants, two with antipsychotics, one with a combination of both and one child used low-dose naltrexone. Within the OCD group, seven children were being treated with antidepressants, one with antipsychotics and one with both. Participants were asked to abstain from stimulant medication 24 hours before scanning. Seven children with ASD had a current comorbid diagnosis of ADHD, another two children had both comorbid ADHD and oppositional defiant disorder (ODD). In the OCD group, two participants had comorbid ADHD.

## **2.2 Stop-signal task**

Participants completed a nine minute modified version of the stop-signal task adapted from Rubia and colleagues (2003), using Presentation software (Neurobehavioral Systems, Albany, California) during an fMRI session. Each trial started with a fixation cross

(500 ms) displayed on a computer screen. During go-trials (80% of a total number of 294 trials), participants were instructed to hit the right button on a response pad as fast as possible with their right middle finger whenever they were presented with an arrow pointing to the right, and to hit the left button as fast as possible with their right index finger whenever they were presented with an arrow pointing to the left. During stop-trials (20% of a total number of 294 trials), a go-signal was followed by an arrow pointing upwards (stop-signal) and participants were instructed to withhold (stop) their button press. The mean inter-trial interval (ITI) was randomly jittered between 1.6 and 2.0 s to optimize statistical efficiency. The delay between a go- and stop-signal (stop-signal delay: SSD) was dynamically changed (start: 250 ms) using an adaptive staircase algorithm, where whenever the participant stopped successfully on a stop-trial, the SSD latency of the following stop-trial increased by 50ms (max. 900 ms), thereby making it more difficult to stop. If the participant did not inhibit his/her response during the previous stop-trial, SSD latency decreased by 50ms (min. 50 ms). This procedure ensured that the sessions concluded with an approximately equal number of successful and failed stop-trials.

Before participating in the MR session, children at each site were prepared for scanning using a mock scanner. In this session, children were familiarized with MR sounds, the button box needed for task completion, and lying still in the scanner environment. In addition, participants performed a brief practice session of the task. If a child (or his/her parent) reported anxiety to enter the MR scanner, the session was ended. This procedure has proven successful in reducing anxiety for the MR session (Durstun et al., 2009).

Our measures of interest for task performance were mean reaction time (MRT) on correct go-trials, stop-signal reaction time (SSRT), mean stop-signal delay (SSD), number of non-responses to go-trials (omissions) and number of incorrect responses to go-trials (commissions). The SSRT was estimated using the integration method from Verbruggen and colleagues (2013): first, reaction times (RT) to correct go-trials were rank ordered. Subsequently, the  $n$ th go-RT was selected, where  $n$  was derived by multiplying the number

of correct go-trials by the probability that one respond to a stop-signal ( $P(\text{respond} \mid \text{stop-signal})$ ). The SSRT then was estimated by subtracting the mean SSD from the  $n$ th go-RT.

### 2.3 fMRI image acquisition

At the four different sites, comparable 3-Tesla MRI scanners were used (Siemens Trio and Siemens Prisma, Siemens, Erlangen, Germany; General Electric MR750, GE Medical Systems, Milwaukee, WI, USA; Philips 3T Achieva, Philips Medical Systems, Best, The Netherlands). Scanner information across sites is available in Table S1 (Supplemental Material).

### 2.4 Behavioral data analysis

Data from sixteen participants (ASD  $N = 11$ , OCD  $N = 3$ , TD  $N = 2$ ) could not be analyzed due to incomplete task performance. We cleaned the data to optimize data quality for statistical analysis: we excluded participants with SSRT values below 50 ms (ASD  $N = 9$ , OCD  $N = 3$ , TD = 4), accuracy below 25% successful stop-trials (OCD  $N = 1$ ), or accuracy below 60% of the total number of correct go-trials (ASD  $N = 1$ , OCD  $N = 3$ ) (Congdon et al, 2012). Data from 162 participants (ASD = 39, OCD = 31, TD = 92) were available for behavioral analysis.

#### 2.4.1 Matching procedure

As there were differences in mean age for the children in the behavioral sample (children with OCD where older than other groups [ $F_{(2, 159)} = 7.424, p = .001$ ]), propensity score matching (PSM) was performed to create an age-matched sample of children with ASD, OCD and TD. PSM, implemented in SPSS 22.0, is a statistical method to pair individuals with similar values on a propensity score from a pool of participants. First, a multivariate logistic regression analysis was performed to obtain propensity scores, with age as a covariate. In order to minimize the number of exclusions, children with OCD and ASD

were merged together in one group, and then matched 1:1 with a TD participant using a caliper set at .05. This procedure yielded three final diagnostic groups that were matched for age (ASD = 38, OCD = 23, TD = 61) (Supplemental Table S2).

#### 2.4.2 Statistical analyses

Behavioral data analysis was performed in SPSS version 22.0 (IBM). First, group differences in demographic and clinical measures were tested using the appropriate Pearson's  $\chi^2$ -tests or one-way analyses of variance (ANOVA). Levene's test for homogeneity of variance and Shapiro-Wilk normality tests were used to check if assumptions of homogeneity of variance and normality were met. If data did not meet these assumptions, non-parametric tests were used (Kruskal Wallis rank sum test or Mann–Whitney U-test). Group differences on all task-performance measures (MRT, SSRT, SSD, number of omission and commission errors) were initially tested within a General Linear Model (GLM) framework using analyses of covariance (ANCOVA), with the task-performance measures as the dependent variables, diagnostic group as independent variable, and gender and site as covariates. However, if both gender and site did not render any significant effects, they were removed from the design in the final analyses. For significant main effects, we ran post-hoc pairwise comparisons between the three diagnostic groups. Lastly, we ran correlation analyses between task performance measures and symptom severity as assessed using the compulsive subscale and the total score of the RBS-R, and the total score of the CPRS-R. Unfortunately, the number of administered CY-BOCS in the ASD group was too low to include in any further analyses.

### 2.5 fMRI data analysis

#### 2.5.1 fMRI preprocessing

fMRI preprocessing was performed using standard procedure in SPM12, as implemented in MATLAB R2015b. Data from three participants (ASD N = 1, TD N = 2) were

excluded due to incomplete fMRI data or problems with angulation. fMRI data were realigned to the first volume to correct for in-scanner head motion. Next, using the ArtRepair toolbox in SPM12, all volumes with frame-to-frame movement  $>1$  mm or  $>1.5\%$  standard deviation from the mean signal were substituted using linear interpolation from neighboring frames. Consequently, 24 participants (ASD  $N = 11$ , OCD  $N = 7$ , TD  $N = 6$ ) were excluded from the fMRI analysis due to excessive head motion (absolute movement more than one voxel,  $N = 13$ ), or replacement of more than 20% of total volumes in the ArtRepair step ( $N = 11$ ). This resulted in 26 ASD, 16 OCD and 53 TD datasets to carry forward to the fMRI analysis. After realignment and motion-correction, the fMRI data and anatomical T1-image were co-registered, followed by normalization to Montreal Neurological Institute (MNI) standard atlas and finally spatially smoothed with a  $6\text{mm}^3$  full width at half maximum (FWHM) Gaussian kernel.

### 2.5.2 Statistical analyses

At the first level, onsets of three event types (correct go-trials, successful stop-trials, failed stop-trials) were modeled using delta functions convolved with the canonical haemodynamic response function (HRF). Six motion estimation parameters were included in the model as regressors of no interest.

Second-level random effects analyses were run for two contrasts of interest: successful stopping was investigated by contrasting successful stop trials with correct go trials (successful stop activation  $>$  go activation). Failed stopping was investigated by contrasting failed stop trials with correct go trials (failed stop activation  $>$  go activation). We assessed whole-brain group differences in activation for these two contrasts using F-tests (three-way comparison) and t-tests (planned direct comparisons) at a Family-Wise Error (FWE) corrected  $p$ -value of .05. Whole-brain analyses were followed up with a data-driven region of interest (ROI) analysis. These data-driven ROIs showed high agreement with

regions reported in earlier studies including older samples of subjects (Chantiluke et al., 2015; Rubia et al., 2010; Woolley et al., 2008).

For both contrasts, we used MarsBar (<http://marsbar.sourceforge.net>), to create 6mm spheres around the peak voxel coordinates of regions in the frontostriatal cognitive control network showing significant whole-brain corrected ( $p_{FWE} = .05$ ) activation in typically developing controls (Supplemental Table S3). This resulted in seven ROIs for successful stop trials, and eight ROIs for failed stop trials. We extracted the timecourses from these ROIs for between-group comparisons. We tested for between-group differences in brain activation within the ROIs for both contrasts within a General Linear Model (GLM) framework using ANCOVA, with the mean signal from the ROIs as dependent variables, and diagnostic group (ASD, OCD, TD) and site as independent variables. We then compared children with ASD directly to children with OCD in a two-sample t-test planned contrast. Additionally, we assessed possible correlations between whole brain activity and activity from ROIs with the compulsive subscale and the total score of the RBS-R, and the total score of the CPRS-R. *P*-values were adjusted for multiple testing, using the Benjamini-Hochberg procedure to control the False Discovery Rate (FDR) (Benjamini & Hochberg, 1995).

### 2.5.3 Exploratory analyses

In a first exploratory follow-up analysis, we pooled the children with OCD and ASD into a single group to increase statistical power to detect any shared differences from TD children. In a second exploratory analysis, we performed a median split to group participants based on their scores on the RBS-R (score <14 or >13). A third exploratory analysis addressed ADHD symptoms, using a median split to create two groups based on CPRS-R score (score <64 or >63).

### 2.5.4 Power analysis

Using G\*Power 3.1 (Faul et al., 2009), we conducted a post-hoc power analysis to estimate the sample size that would be needed to detect between-group differences. Sample size  $N$  was computed as a function of the required power level  $1 - \beta$  (.80), the prespecified significance level  $\alpha$  (.05), and the population effect size to be detected with probability  $1 - \beta$  (.10).

### 3. Results

#### 3.1 Group characteristics

After propensity score matching, groups did not differ in age [ $F_{2, 119} = 0.408, p = .666$ ] gender composition [ $\chi^2(2) = 4.019, p = .134$ ], hand preference [ $\chi^2(2) = 0.515, p = .773$ ], or estimated IQ scores [ $F_{2, 119} = 1.844, p = .163$ ]. Both children with ASD and OCD scored higher on the compulsivity subscale and total score of the RBS-R than typically developing children. The mean CY-BOCS score for the OCD group was just above the clinical cut-off score (>16) (see Supplement Table S2).

The reduced fMRI-sample was also matched in terms of age, gender and hand preference. However, IQ differed between groups, with lower scores for children with OCD compared to controls (see Table 1).

#### 3.2 Task performance

ANOVA showed no main effects of diagnostic group on any of the behavioral measures of interest (MRT, SSRT, SSD, number of omission and commission errors) in either the whole sample (Supplement Table S4) or the smaller fMRI sample (Table 2). These results did not significantly change after adding IQ or CPRS-R as a covariate to the design, or when children on medication were excluded. Within the whole sample, there was a main effect of site on MRT [ $F_{3, 110} = 3.207, p = .026$ ] and SSD [ $F_{3, 110} = 4.458, p = .005$ ], but this did not affect the effect of diagnostic status. Furthermore, correlational analysis showed a



positive correlation between the compulsive subscale of the RBS-R and SSD ( $r(22) = -.517$ ,  $p = .012$ ) in children with OCD. However, this correlation was not present in the fMRI group, suggesting that this effect may not be replicable over studies. There were no correlations between measures of task performance and symptom severity, as assessed using the total score of the RBS-R or total score of the CPRS-R, that survived Bonferroni-correction.

### **3.3 Between-group differences in brain activation**

All groups showed the expected pattern of brain activation related to go-trials, including activation of left motor cortex. During stopping, participants showed predominantly right but also left middle frontal gyrus activity, extending into precentral gyrus / presupplementary motor area and the inner cortical structures of insula and cingulate gyrus (Fig. 1). There were no differences between groups in activation during successful or failed stop-trials that survived whole-brain correction ( $p_{FWE} < .05$ ). Nor were there any between-group differences in any of the ROIs that survived FDR-correction for multiple comparisons. These results did not significantly change after adding IQ or CPRS-R as a covariate to the design, or when children on medication were excluded. The calculated effect sizes ( $\eta^2$ ) for non-significant findings did not exceed .017. Correlational analyses yielded no significant associations between whole brain activity and activity from ROIs with the compulsive subscale and the total score of the RBS-R, and the total score of the CPRS-R, that survived Bonferroni-correction for multiple comparisons.

### **3.4 Between-group differences in brain activation based on symptom severity**

As the three-group comparison yielded no significant differences in task-performance or brain activation between diagnostic groups, we merged the children with OCD and ASD into a single group to increase statistical power for an exploratory analysis. Again, we found no differences between children with a diagnosis and those without. When we divided the

children with a diagnosis into two groups using a median-split analysis on their RBS-R scores, we similarly found no differences in task-performance or brain activity.

When we divided participants with ASD and OCD into two groups using a median split analysis on their CPRS-R scores, we found that children with higher ADHD symptom scores had more activity in left middle frontal gyrus ( $t = -2.782$ ,  $df = 33$ ,  $p = .009$ ,  $d = 0.94$ ), left middle cingulate gyrus ( $t = -3.316$ ,  $df = 33$ ,  $p = .002$ ,  $d = 1.12$ ) and right middle cingulate gyrus ( $t = -4.397$ ,  $df = 33$ ,  $p = .000$ ,  $d = 1.48$ ) during failed stop trials than children with lower scores (Fig. 2). During successful stop trials, the same group showed increased activity in the left middle cingulate gyrus ( $t = -2.067$ ,  $df = 33$ ,  $p = .047$ ), left superior frontal gyrus ( $t = -2.145$ ,  $df = 33$ ,  $p = .039$ ) and right middle frontal gyrus ( $t = -2.063$ ,  $df = 33$ ,  $p = .047$ ), although these findings did not survive FDR-correction for multiple comparisons. Furthermore, activity in right insula/inferior frontal gyrus correlated negatively with SSRT for children with high ADHD scores ( $r = -.630$ ,  $p = .007$ ), but not for those with lower scores ( $r = -.114$ ,  $p = .654$ ) (Fig. 3). Groups did not differ in terms of task performance, despite the differences in brain activity.

### 3.5 Power analysis

The power analysis showed that with the effect-sizes found in the current study, a total of 923 participants would have been required to reach a power level of 0.80 and discriminate between children with ASD and OCD and typically developing volunteers, suggesting that any differences between children with and without diagnoses in terms of brain activity and task performance are in the range of noise and unlikely to be clinically meaningful.

## 4. Discussion

The aim of this study was to investigate the behavioral and neural correlates of cognitive control as assessed using a modified stop-signal task in a multicenter study of

children with ASD, OCD and typically developing children. Children with ASD and OCD did not show the expected deficits in cognitive control, nor changes in brain activity in task-relevant neural networks. In fact, the only operationalization of behavioral symptoms that led to findings of changes in brain activity was for symptoms of ADHD. Here, children who had more symptoms showed increased activity in prefrontal regions during cognitive control, compared to children with fewer ADHD symptoms. In addition, decreased cognitive control was associated with higher activation of the right insula/inferior frontal gyrus for the children with more parent-rated symptoms of ADHD.

Contrary to our expectations, we found no differences between children with OCD and TD children in stopping speed. Nevertheless, this finding converges with previous work showing similar SSRT in children with OCD and matched typically developing peers (Rubia et al., 2010; Wooley et al., 2008). In contrast, differences in SSRT have been found for adolescents and adults with OCD (Chamberlain et al., 2007; Kang et al 2012; Penadés et al., 2007; de Wit et al., 2012), suggesting that for individuals with OCD, problems with cognitive control may emerge later in development.

Similarly, we found no differences in task performance between children with ASD and typically developing controls. Earlier findings in ASD have been mixed, with reports of both longer SSRT (Geurts et al., 2004; Lemon et al., 2011) and no difference in SSRT (Adams and Jarrod, 2012; Chantiluke et al., 2015; Ozonoff and Strayer, 1997; Schmitt et al., 2017). The present findings contribute to a broader cognitive control literature in ASD that shows similar inconsistencies in findings (Ambrosino et al., 2014; Christ et al., 2007; Geurts et al., 2014; Yerys, 2015), yet converges to suggest that children with ASD may show selective impairments in interference control (Adams & Jarrod, 2012) or proactive mechanisms (Schmitt et al., 2017) in the absence of problems with reactive stopping. Recent work has also suggested that the inconsistencies in findings may be driven by the type of stimulus used (Bos et al., 2018; Kuiper et al., 2016), where the ability to exert cognitive control may be selectively impaired in the context of stimuli that are highly salient

to individuals with ASD or OCD (Bos et al., 2018; Cascio et al., 2014; Kohls et al., 2018). Finally, it is an open question to which extent the existing studies in this area have been affected by co-morbid ADHD symptoms in participants, which are often not assessed.

Consistent with our behavioral findings, we found no differences in brain activity during cognitive control in ASD and OCD. Previous studies investigating the neural correlates of cognitive control in children with OCD using stop-signal tasks have reported decreased activation of frontal regions including the orbitofrontal gyrus, mesial/dorsolateral frontal gyrus, anterior cingulate, and insula, as well as subcortical regions such as thalamus, caudate, putamen and globus pallidus (Rubia et al., 2010; Wooley et al., 2008). In ASD, earlier studies have reported increased left-hemispheric inferior/middle frontal gyrus and orbitofrontal activation during stopping (Schmitz et al., 2006). Yet, our finding of no differences in frontostriatal brain activation is consistent with a growing body of literature using cognitive control paradigms and showing no differences in brain activation in children with ASD (Ambrosino et al., 2014; Lee et al., 2009; extensively reviewed in Yerys et al., 2015).

Notably, we found that children with increased ADHD symptoms showed greater activation in left middle frontal gyrus and left/right middle cingulate gyrus during failed stop-trials compared to children with low ADHD symptoms (Fig. 2). These findings are partially in line with reports of increased activation in right dorsolateral prefrontal cortex (DLPFC) in children with ADHD (Pliszka et al., 2006). Yet, children with ADHD have also been reported to show reduced activation in several prefrontal regions compared to typically developing children (Pasarotti et al., 2010). Furthermore, at the behavioral level children with ADHD have been reported to have longer SSRTs (Lyszyk et al., 2010), which we did not find in our children with ASD or OCD. Taken together, our findings suggest that children with ASD and OCD do not have a general deficit in cognitive control and associated frontostriatal neural circuits, but that changes in brain activation may rather be driven by the presence of ADHD symptoms.

A strength of our study is that it considers children with ASD and OCD with similar symptoms of compulsion in a single design. However, our findings should also be considered in light of some limitations: the sample size for our fMRI-analyses was relatively small (especially for the OCD-group). This was mostly due to loss of data due to subject motion during the fMRI session. Nevertheless, the remaining sample was well-matched for important demographic confounders. Furthermore, a post-hoc power analysis showed that a vast number of participants (N = 923) would have been necessary to detect between-group differences. Even though we cannot exclude that our finding of no differences between groups may have been caused by a lack of statistical power, it must be noted that the effect sizes for our primary between-group comparisons were extremely small ( $\eta^2 < .017$ ), suggesting that the clinical relevance of these effects would be minimal, even in an adequately powered study.

In conclusion, the findings from this study do not support differences in cognitive control or associated neural circuitry in children with ASD and OCD. Instead, our results suggest that changes in cognitive control are more likely to be associated with symptoms of comorbid ADHD than compulsivity or repetitive behavior more generally.

## References

- Abramovitch, A., Dar, R., Mittelman, A., & Wilhelm, S. (2015). Comorbidity between attention deficit/hyperactivity disorder and obsessive-compulsive disorder across the lifespan: a systematic and critical review. *Harv Rev Psychiatry*, **23**(4): 245 – 262. doi: 10.1097/HRP.0000000000000050.
- Adams N.C. & Jarrold, C. (2012). Inhibition in autism: Children with autism have difficulty inhibiting irrelevant distractors but not prepotent responses. *J Autism Dev Disord*, **42**(6): 1052 –1063. doi: 10.1007/s10803-011-1345-3.
- Ambrosino, S., Bos, D.J., van Raalten, T.R., Kobussen, N.A., van Belle, J., Oranje, B., &Durston, S. (2014). Functional connectivity during cognitive control in children with autism spectrum disorder: an independent component analysis. *J Neural Transm*, **121**(9): 1145 – 55. <https://doi.org/10.1007/s00702-014-1237-8>
- American Psychiatric Association. (2000). Diagnostic and statistical manual of mental disorders (4th ed., text rev.). Washington, DC: Author.
- American Psychiatric Association. (2013). Diagnostic and statistical manual of mental disorders (5th ed.). Washington, DC: Author.
- Baxter A.J., Brugha T.S., Erskine H.E., Scheurer R.W., Vos T., & Scott, J.G. (2015). The epidemiology and global burden of autism spectrum disorders. *Psychol Med*, **45**: 601–613. doi: 10.1017/S003329171400172X
- Benjamini, Y., & Hochberg, Y. (1995). Controlling the False Discovery Rate: A Practical and Powerful Approach to Multiple Testing. *J R Statist Soc B*, **55**(1): 289 – 300
- Bodfish, J.W., Symons, F.J., Parker, D.E., & Lewis, M.H. (2000). Varieties in repetitive behavior in autism. *J Autism Dev Disord*, **30**(3): 237 – 243. doi: [doi.org/10.1023/A:1005596502855](https://doi.org/10.1023/A:1005596502855)
- Bos, D.J., Silverman, M.R., Ajodan, E.L., Martin, C., Silver, B., Brouwer, G., .... Jones, R.M. (2018). Rigidity coincides with reduced cognitive control to affective cues in children with autism, *PsyArXiv*, doi: <https://dx.doi.org/10.31234/osf.io/faz45>

- Cascio, C.J., Foss-Feig, J.H., Heacock, J., Schauder, K.B., Loring, W.A., Rogers, B.P., ... Bolton, S. (2014). Affective neural response to restricted interests in autism spectrum disorders. *J Child Psychol Psychiatry Allied Discip*, **55**(2): 162 – 171. doi: <https://doi.org/10.1111/jcpp.12147>
- Chamberlain, S.R., Blackwell, A.D., Fineberg, N.A., Robbins, T.W., & Sahakian, B.J. (2005). The neuropsychology of obsessive compulsive disorder: the importance of failures in cognitive and behavioural inhibition as candidate endophenotypic markers. *Neurosci Biobehav Rev*, **29**(3): 399 - 419. doi: 10.1016/j.neubiorev.2004.11.006
- Congdon, E., Mumford, J.A., Cohen, J.R., Galvan, A., Canli, T., & Poldrack, R.A. (2012). Measurement and reliability of response inhibition. *Front Psychol*, **3**: 1 – 10. doi: <https://doi.org/10.3389/fpsyg.2012.00037>
- Chantiluke, K., Barret, N., Giampietro, V., Santosh, P., Brammer, M., Simmons, A., ... Rubia, K. (2015). Inverse fluoxetine effects on inhibitory brain activation in non-comorbid boys with ADHD and with ASD. *Psychopharmacology*, **232**(12): 2071 - 2082. doi: 10.1007/s00213-014-3837-2
- Chamberlain, S.R., Fineberg, N.A., Menzies, L.A., Blackwell, A.D., Bullmore, E.T., Robbins, T.W., & Sahakian, B.J. (2007). Impaired cognitive flexibility and motor inhibition in unaffected first-degree relatives of patients with obsessive-compulsive disorder. *Am J Psychiatry*, **164**(2): 335 – 338. doi: <https://doi.org/10.1176/ajp.2007.164.2.335>
- Conners, C.K., Sitarenios, G., Parker, J.D., & Epstein, J.N. (1998). The revised Conners' Parent Rating Scale (CPRS-R): factor structure, reliability, and criterion validity. *J Abnorm Child Psychol*, **26**(4): 257 – 268. doi: [doi.org/10.1023/A:1022602400621](https://doi.org/10.1023/A:1022602400621)
- Christ, S.E., Holt, D.D., White, D.A., Green, L. (2007). Inhibitory Control in Children with Autism Spectrum Disorder. *J Autism Dev Disord*, **37**(6), 1155 – 1165. doi: <https://doi.org/10.1007/s10803-006-0259-y>

- Faul, F., Erdfelder, E., Buchner, A., & Lang, A.E. (2009). Statistical power analyses using G\*Power 3.1: tests for correlation and regression analyses. *Behav Res Methods*, **41**(4): 1149 - 1160. doi: <https://doi.org/10.3758/BRM.41.4.1149>
- Flament, M.F., Whitaker A., Rapoport, J.L., Davies M., Berg, C.Z., Kalikow, K., ... Shaffer, D. (1988). Obsessive compulsive disorder in adolescence: an epidemiological study. *J Am Acad Child Adolesc Psychiatry*, **27**(6): 764 – 771. doi: 10.1097/00004583-198811000-00018
- Geurts, H.M., Verte, S., Oosterlaan, J., Roeyers, H., Sergeant, J.A. (2004). How specific are executive functioning deficits in attention deficit hyperactivity disorder and autism? *J Child Psychol Psychiatry*, **45**(4):836–854. doi: <https://doi.org/10.1111/j.1469-7610.2004.00276.x>
- Geurts, H.M., Corbett, B., & Solomon, M. (2009). The paradox of cognitive flexibility in autism. *Trends Cogn Sci*, **13**(2): 74 – 82. doi: 10.1016/j.tics.2008.11.006
- Grzadzinski, R., Dick, C., Lord, C., & Bishop, S. (2016). Parent-reported and clinician-observed autism spectrum disorder (ASD) symptoms in children with attention deficit/hyperactivity disorder (ADHD): implications for practice under DSM-5. *Mol Autism*, **7**(7): doi: 10.1186/s13229-016-0072-1
- Hill, E.L. (2004). Executive dysfunction in autism. *Trends Cogn Sci*, **8**(1): 26 – 32. doi: <https://doi.org/10.1016/j.tics.2003.11.003>
- Ivarsson, T. & Melin, K. (2008). Autism spectrum traits in children and adolescents with obsessive-compulsive disorder (OCD). *J Anxiety Disord*, **22**(6): 969 – 978. doi: 10.1016/j.janxdis.2007.10.003
- Jiujias, M., Kelley, E., & Hall, L. (2017). Restricted, repetitive behaviors in autism spectrum disorder and obsessive-compulsive disorder: a comparative review. *Child Psychiatry Hum Dev*, **48**(6): 944 – 959. doi:10.1007/s10578-017-0717-0
- Kang, D.H., Jang, J.H., Han, J.Y., Kim, J.H., Jung, W.H., Choi, J.S., ... Kwon, J.S. (2013). Neural correlates of altered response inhibition and dysfunctional connectivity at rest



- in obsessive-compulsive disorder. *Prog Neuro-Psychopharmacology Biol Psychiatry*, **40**: 340 – 346. doi: <https://doi.org/10.1016/j.pnpbp.2012.11.001>
- Kaufman, J., Birmaher, B., Brent, D., Rao, U., Flynn, C., Moreci, P., ... Ryan, M. (1997). *J Am Acad Child Adolesc Psychiatry*, **36**(7): 980 – 988. Doi: 10.1097/00004583-199707000-00021
- Kohls, G., Antezana, L., Mosner, M.G., Schultz, R.T., & Yerys, B.E. (2018). Altered reward system reactivity for personalized circumscribed interests in autism. *Mol Autism*, **9**(9): 1 – 12. doi: <https://doi.org/10.1186/s13229-018-0195-7>
- Kuiper, M.W.M., Verhoeven, E.W.M., & Geurts, H.M. (2016). The role of interstimulus interval and “Stimulus-type” in prepotent response inhibition abilities in people with ASD: A quantitative and qualitative review. *Autism Res*, **9**(11): 1124 – 1141. doi: <https://doi.org/10.1002/aur.1631>
- Lemon, J.M., Gargaro, B., Enticott, P.G., & Rinehart, N.J. (2011). Executive functioning in autism spectrum disorders: A gender comparison of response inhibition. *J Autism Dev Disord*, **41**(3): 52 – 356. doi: 10.1007/s10803-010-1039-2
- Lee, P.S., Yerys, B.E., Della Rosa, A., Foss-Feig, J., Barnes, K.A., James, J.D., ... Kenworthy, L.E. (2009). Functional connectivity of the inferior frontal cortex changes with age in children with autism spectrum disorders: A fcMRI study of response inhibition. *Cereb Cortex*, **19**(8):1787 – 1794. doi: <https://doi.org/10.1093/cercor/bhn209>
- Leyfer, O.T., Folstein, S.E., Bacalman, S., Davis, N.O., Dinh, E., Morgan, J., ... Lainhart J.E. (2006). Comorbid psychiatric disorders in children with autism: interview development and rates of disorders. *J Autism Dev Disord*, **36**(7): 849 – 861. doi: 10.1007/s10803-006-0123-0
- Lipszyc, J., & Schachar, R. (2010). Inhibitory control and psychopathology: A meta-analysis of studies using the stop signal task. *J Int Neuropsychol Soc*, **16**: 1064 – 1076. doi: <https://doi.org/10.1017/S1355617710000895>

- Logan, G. D., & Cowan, W. B. (1984). On the ability to inhibit thought and action: A theory of an act of control. *Psychol Rev*, **91**(3), 295 - 327. doi: <http://dx.doi.org/10.1037/0033-295X.91.3.295>
- Lord, C., Rutter, M., & Le Couteur, A. (1994). Autism Diagnostic Interview-Revised: a revised version of a diagnostic interview for caregivers of individuals with possible pervasive developmental disorders. *J Autism Dev Disord*, **24**(5): 659 – 685.
- Maltby, N., Tolin, D.F., Worhunsky, P., O’Keefe, T.M., & Kiehl, K.A. (2005). Dysfunctional action monitoring hyperactivates frontal-striatal circuits in obsessive-compulsive disorder: an event-related fmri study. *Neuroimage*, **24**(2): 495 – 503. doi: [10.1016/j.neuroimage.2004.08.041](https://doi.org/10.1016/j.neuroimage.2004.08.041)
- Masi, G., Millepiedi, S., Mucci, M., Bertini, N., Pfanner, C., & Arcangeli, F. (2006). Comorbidity of obsessive-compulsive disorder and attention-deficit/hyperactivity disorder in referred children and adolescents. *Compr Psychiatry*, **47**(1): 42 – 47. doi: [10.1016/j.comppsy.2005.04.008](https://doi.org/10.1016/j.comppsy.2005.04.008)
- Mayes, S.D., Calhoun, S.L., Mayes, R.D., & Molitoris, S. (2012). Autism and ADHD: Overlapping and discriminating symptoms. *Res in Autism Spect Disord*, **6**(1): 277 - 285. doi: [10.1016/j.rasd.2011.05.009](https://doi.org/10.1016/j.rasd.2011.05.009)
- McDougle, C.J., Kresch, L.E., Goodman, W.K., Naylor, S.T., Volkmar, F.R., Cohen, D.J., & Price, L.H. (1995). A case-controlled study of repetitive thoughts and behavior in adults with autistic disorder and obsessive-compulsive disorder. *Am J Psychiatry*, **152**(5): 772 -777. doi: [10.1176/ajp.152.5.772](https://doi.org/10.1176/ajp.152.5.772)
- Moritz, S., Birkner, C., Kloss, M., Jahn, H., Hand, I., Haasen, C., & Krausz, M. (2002). Executive functioning in obsessive-compulsive disorder, unipolar depression, and schizophrenia. *Arch Clin Neuropsychol*, **17**(5), 477 – 483. doi: [https://doi.org/10.1016/S0887-6177\(01\)00130-5](https://doi.org/10.1016/S0887-6177(01)00130-5)
- Mosconi, M.W., Kay, M., D’Cruz, A.-M., Seidenfeld, A., Guter, S., Stanford, L.D., Sweeney, J.A. (2009). Impaired inhibitory control is associated with higher-order repetitive

- behaviors in autism spectrum disorders. *Psychol Med*, **39**(9): 1559 – 1566. doi: <https://doi.org/10.1017/S0033291708004984>
- Naaijen, J., de Ruiter, S., Zwiers, M.P., Glennon, J.C., Durston, S., Lythgoe, D.J., ... Buitelaar, J.K. (2016). COMPULS: design of a multicenter phenotypic, cognitive, genetic, and magnetic resonance imaging study in children with compulsive syndromes. *BMC Psychiatry*, **16**(1): 361. doi: [doi.org/10.1186/s12888-016-1072-6](https://doi.org/10.1186/s12888-016-1072-6)
- Ozonoff, S., & Strayer, D.L. (1997). Inhibitory Function in Nonretarded Children with Autism. *J Autism Dev Disord*, **27**(1): 59 - 77. doi: <http://doi.org/10.1023/A:1025821222046>
- Page, L.A., Rubia, K., Deeley, Q., Daly, E., Toal, F., Mataix-Cols, D., ... Murphy, D.G.M. (2009). A functional magnetic resonance imaging study of inhibitory control in obsessive-compulsive disorder. *Psychiatry Res. – Neuroimaging*, **174**(3): 202 – 209. doi:<https://doi.org/10.1016/j.psychresns.2009.05.002>
- Passarotti, A.M., Sweeney, J.A., & Pavuluri, M.N. (2010). Neural correlates of response inhibition in pediatric bipolar disorder and attention deficit hyperactivity disorder. *Psychiatry Res*, **181**(1): 36 – 43. doi: <https://doi.org/10.1016/j.psychresns.2009.07.002>
- Penadés, R., Catalán, R., Rubia, K., Andrés, S., Salamero, M., & Gastó. C. (2007). Impaired response inhibition in obsessive compulsive disorder. *Eur Psychiatry*, **22**(6): 404 – 410. doi: [10.1016/j.eurpsy.2006.05.001](https://doi.org/10.1016/j.eurpsy.2006.05.001)
- Pliszka, S.R., Glahn, D.C., Semrud-Clikeman, M., Franklin, C., Perez III, R., Xiong, J., & Liotti, M. (2006). Neuroimaging of inhibitory control areas in children with attention deficit hyperactivity disorder who were treatment naive or in long-term treatment. *Am J Psychiatry*, **163**(6), 1052–1060. doi: <https://doi.org/10.1176/ajp.2006.163.6.1052>
- Roth, R.M., Saykin, A.J., Flashman, L.A., Pixley, H.S., West, J.D., & Mamourian, A.C. (2007). Event-related functional magnetic resonance imaging of response inhibition in obsessive-compulsive disorder. *Biol Psychiatry* **62**(8), 901 – 909.

- Rubia, K., Smith, A.B., Brammer, & M.J., Taylor, E. (2003). Right inferior prefrontal cortex mediates response inhibition while mesial prefrontal cortex is responsible for error detection. *Neuroimage* **20**(1): 351–358. [https://doi.org/10.1016/S10538119\(03\)00275-1](https://doi.org/10.1016/S10538119(03)00275-1)
- Rubia, K., Cubillo, A., Smith, A.B., Woolley, J., Heyman, I., & Brammer, M.J. (2010). Disorder-specific dysfunction in right inferior prefrontal cortex during two inhibition tasks in boys with attention-deficit hyperactivity disorder compared to boys with obsessive-compulsive disorder. *Hum Brain Mapp*, **31**(2): 287 – 299. doi: <https://doi.org/10.1002/hbm.20864>
- Scahill, L., Riddle, M.A., McSwiggin-Hardin, M., Ort, S.I., King, R.A., Goodman, W.K., ... Leckman, J.F. (1997). Children's Yale-Brown Obsessive Compulsive Scale: reliability and validity. *J Am Acad Child Adolesc Psychiatry*, **36**(6): 844 – 852. doi: [10.1097/00004583-199706000-00023](https://doi.org/10.1097/00004583-199706000-00023)
- Wechsler D. (2003). *Wechsler Intelligence Scale for Children*, 4th Edn San Antonia, TX: PsychCorp.
- Schmitt, L.M., White, S.P., Cook, E.H., Sweeney, J.A., & Mosconi, M.W. (2017). Cognitive mechanisms of inhibitory control deficits in autism spectrum disorder. *J Child Psychol Psychiatry*, **59**(5): 586 – 595. doi: <https://doi.org/10.1111/jcpp.12837>
- Schmitz N, Rubia K, Daly E, Smith A, Williams S, Murphy DGM (2006). Neural Correlates of Executive Function in Autistic Spectrum Disorders. *Biol Psychiatry*, **59**(1): 7 – 16. doi: [doi.org/10.1016/j.biopsych.2005.06.007](https://doi.org/10.1016/j.biopsych.2005.06.007)
- Snyder, H.R., Kaiser, R.H., Warren, S.L., & Heller, W. (2015). Obsessive-compulsive disorder is associated with broad impairments in executive function: A meta-analysis. *Clin Psychol Sci*, **3**(2): 301 – 330. doi: [10.1177/2167702614534210](https://doi.org/10.1177/2167702614534210)
- Stevens, T., Peng, L., & Barnard-Brak, L. (2016). The comorbidity of ADHD in children diagnosed with autism spectrum disorder. *Res. Autism Spectr Disord*, **31**:11–18. doi: [10.1016/j.rasd.2016.07.003](https://doi.org/10.1016/j.rasd.2016.07.003)

- Valleni-Basile, L.A., Garrison, C.Z., Jackson, K.L., Waller, J.L., McKeown, R.E., Addy, C.L., & Cuffe S.P. (1994). Frequency of obsessive-compulsive disorder in a community sample of young adolescents. *J Am Acad Child Adolesc Psychiatry*, **33**(6): 782 - 791. doi: <https://doi.org/10.1097/00004583-199407000-00002>
- Verbruggen, F., & Logan, G.D. (2008). Response inhibition in the stop-signal paradigm. *Trends Cogn Sci*, **12**(11): 418 – 424. doi: 10.1016/j.tics.2008.07.005
- Verbruggen, F., Chambers, C.D., & Logan, G.D. (2013). Fictitious inhibitory differences: how skewness and slowing distort the estimation of stopping latencies. *Psychol Sci* **24**(3), 352 – 362. <https://doi.org/10.1177/0956797612457390>
- De Wit, S.J., De Vries, F.E., Van Der Werf, Y.D., Cath, D.C., Heslenfeld, D.J., Veltman, E.M., ... Van Den Heuvel, O.A. (2012). Presupplementary motor area hyperactivity during response inhibition: A candidate endophenotype of obsessive-compulsive disorder. *Am J Psychiatry*, **169**(10): 1100 – 1108. doi: <https://doi.org/10.1176/appi.ajp.2012.12010073>
- Woolley, J., Heyman, I., Brammer, M., Frampton, I., McGuire, P.K., & Rubia, K. (2008). Brain activation in paediatric obsessive-compulsive disorder during tasks of inhibitory control. *Br J Psychiatry*, **192**(1): 25 – 31. doi: <https://doi.org/10.1192/bjp.bp.107.036558>
- Yerys, B. E. (2015). An Update on the Neurobiology of Repetitive Behaviors in Autism. In R. M. Hodapp, & D. J. Fidler (Eds.), *International Review of Research in Developmental Disabilities* (pp. 91–150).
- Zandt, F., Prior, M., & Kyrios, M. (2007). Repetitive behaviour in children with high functioning autism and obsessive compulsive disorder. *J Autism Dev Disord*, **37**(2), 251 – 259. doi: 10.1007/s10803-006-0158-2

Zandt, F., Prior, M., & Kyrios, M. (2009). Similarities and differences between children and adolescents with autism spectrum disorder and those with obsessive compulsive disorder: executive functioning and repetitive behaviour. *Autism*, **13**(1), 43 – 57. doi: 10.1177/1362361308097120

ACCEPTED MANUSCRIPT

Table 1. fMRI participants' demographic and clinical information

	ASD (N = 26)	OCD (N = 16)	TD (N = 53)	Test statistic	P value
	Mean (SD)	Mean (SD)	Mean (SD)		
<b>Demographic measures</b>					
Age (years)	11.33 (1.07)	10.92 (1.47)	10.76 (1.15)	$F_{2, 92} = 2.000$	.141
Gender (m/f)	9/17	9/7	24/29	$\chi^2(2) = 1.936$	.380
Righthanded (in %)	92.3%	86.7 %	90.6 %	$\chi^2(2) = 0.352$	.838
Estimated IQ's	108.88 (16.67)	100.72 (13.26)	111.92 (10.33)	K-W $\chi^2(2) = 7.999$	.018 <sup>a</sup>
<b>Clinical measures</b>					
<i>ADI-Revised</i>					
- Social interaction	18.54 (5.30)	-	-		
- Social communication	13.67 (3.39)	-	-		
- Repetitive behavior	3.30 (2.48)	-	-		
<i>CY-BOCS</i>					
- Obsession	-	7.19 (5.23)	-		
- Compulsion	-	10.19 (3.51)	-		
- Total score	-	17.38 (7.70)	-		
<i>RBS-Revised</i>					
- Compulsivity	2.04 (2.64)	4.69 (3.03)	0.06 (0.30)	K-W $\chi^2(2) = 56.919$	<.001 <sup>b</sup>
- Total score	20.04 (16.04)	16.47 (11.36)	0.64 (1.30)	K-W $\chi^2(2) = 62.981$	<.001 <sup>c</sup>
<i>CPRS-Revised: Long<sup>d</sup></i>					
- Inattention	62.85 (11.93)	57.36 (10.62)	45.63 (6.24)	K-W $\chi^2(2) = 34.954$	<.001 <sup>c</sup>
- Hyperactivity	62.90 (13.16)	61.29 (10.51)	45.92 (3.78)	K-W $\chi^2(2) = 36.921$	<.001 <sup>c</sup>
- Total score	64.40 (12.78)	59.92 (10.77)	45.26 (4.76)	K-W $\chi^2(2) = 38.695$	<.001 <sup>c</sup>

Abbreviations: ASD, autism spectrum disorder; OCD, obsessive-compulsive disorder; TD, typically developing group; SD, standard deviation; m/f, male/female; ADI, Autism Diagnostic Interview; CY-BOCS, Children's Yale-Brown Obsessive-Compulsive scale; RBS, Repetitive-Behavior scale; CPRS, Conners' Parent Rating scale

<sup>a</sup> TD > OCD

<sup>b</sup> OCD > ASD > TD

<sup>c</sup> ASD, OCD > TD

<sup>d</sup> Displayed scores are based on T-scores

<sup>e</sup> Comorbidities: ASD+ADHD ( $n=5$ ), ASD+ADHD+ODD ( $n=1$ ), OCD+ADHD ( $n=2$ )

Table 2. fMRI task performance for the diagnostic groups

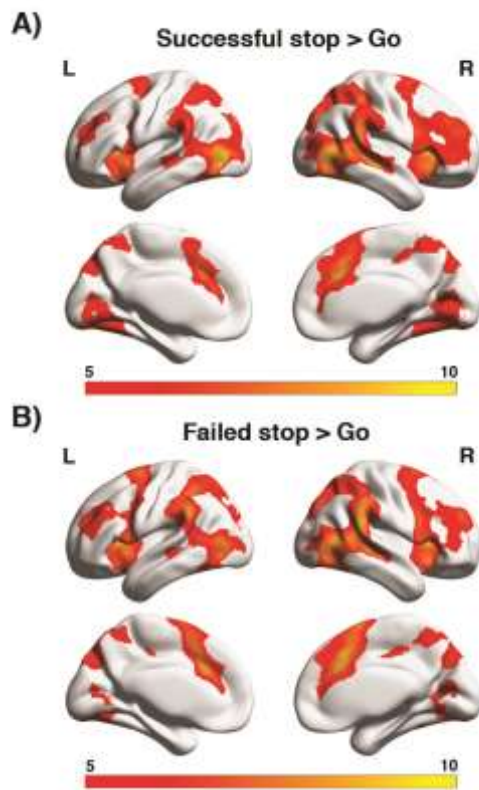
	ASD (N = 26)	OCD (N = 16)	TD (N = 53)	Test statistic	P value
	Mean (SD)	Mean (SD)	Mean (SD)		
<b>MRT</b>	370.36 (87.36)	336.01 (111.96)	381.72 (144.27)	$F_{2, 92} = 0.809$	.448
<b>SSRT</b>	165.94 (71.68)	190.72 (79.99)	188.67 (69.32)	$F_{2, 92} = 0.991$	.375
<b>SSD</b>	561.27 (101.11)	516.08 (93.15)	516.41 (90.49)	$F_{2, 92} = 2.160$	.121
<b>Omissions*</b>	2.02 %	2.43 %	2.24 %	$F_{2, 92} = 0.116$	.891
<b>Commissions*</b>	2.79 %	4.25 %	4.37 %	$F_{2, 92} = 2.304$	.106
<b>Successful stopping*</b>	52.4 %	51.2 %	51.4 %	$F_{2, 92} = 1.093$	.339

\*Commissions, omissions and successful stopping are displayed in % of total trials.

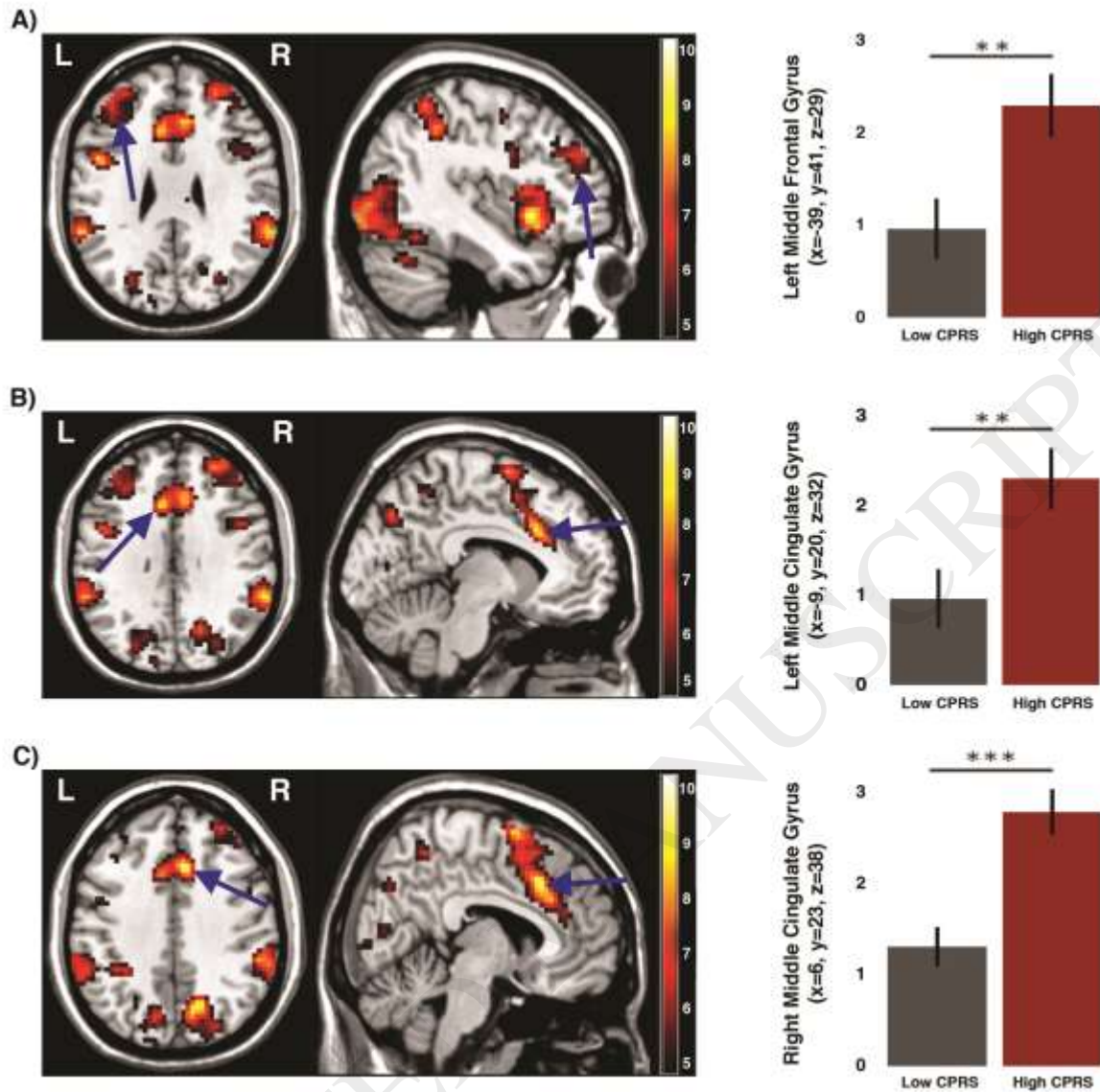
Abbreviations: ASD, autism spectrum disorder; OCD, obsessive-compulsive disorder; TD, typically developing group; SD, standard deviation; MRT = Mean reaction time, SSRT = Stop-signal reaction time, SSD = Stop-signal delay



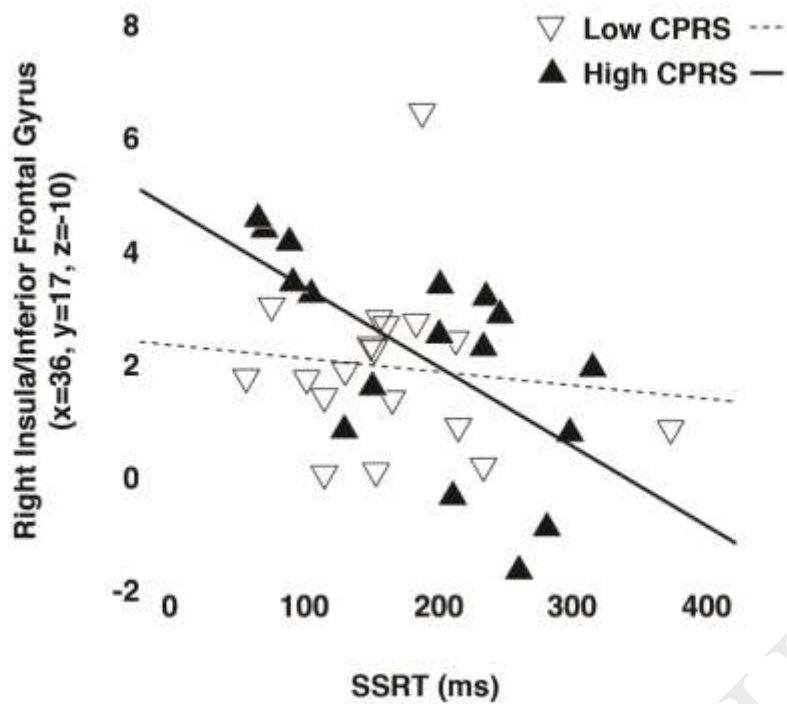
## Figure Captions



**Fig. 1 A)** Task activation across all groups for successful stop trials (successful stop > correct go trials), thresholded at  $p_{FWE} = .05$ , and **B)** failed stop trials (failed stop > correct go trials), thresholded at  $p_{FWE} = .05$ , showing robust frontostriatal activation during cognitive control. The numbers above the colorbars reflect t-values.



**Fig 2.** Results of the region of interest analysis during failed stopping, showing **A)** increased left middle frontal gyrus activation in the high CPRS-R group compared to the low CPRS-R group, **B)** increased left middle cingulate gyrus activation in the high versus low CPRS-R group, and **C)** increased right middle cingulate gyrus activation in the high CPRS-R group. Y-axis reflects parameter estimates. The numbers next to the colorbars reflect t-values. Asterisks denote \*\*  $p < .01$ , \*\*\*  $p < .001$ . CPRS = Conners' Parent Rating scale – Revised



**Fig 3.** Negative correlation between stop-signal reaction time (SSRT) and right insula/inferior frontal gyrus activity in children with ASD or OCD who show elevated symptoms of ADHD (solid line,  $r = -.630$ ,  $p = .007$ ). There was no significant correlation in children with low symptoms of ADHD (dashed line,  $r = -.114$ ,  $p = .654$ ). Y-axis reflects parameter estimates. ms = milliseconds