



King's Research Portal

DOI:

[10.1007/s00213-019-05196-1](https://doi.org/10.1007/s00213-019-05196-1)

Document Version

Publisher's PDF, also known as Version of record

[Link to publication record in King's Research Portal](#)

Citation for published version (APA):

Ashok, A. H., Mizuno, Y., & Howes, O. D. (2019). Tobacco smoking and dopaminergic function in humans: A meta-analysis of molecular imaging studies. *Psychopharmacology*. <https://doi.org/10.1007/s00213-019-05196-1>

Citing this paper

Please note that where the full-text provided on King's Research Portal is the Author Accepted Manuscript or Post-Print version this may differ from the final Published version. If citing, it is advised that you check and use the publisher's definitive version for pagination, volume/issue, and date of publication details. And where the final published version is provided on the Research Portal, if citing you are again advised to check the publisher's website for any subsequent corrections.

General rights

Copyright and moral rights for the publications made accessible in the Research Portal are retained by the authors and/or other copyright owners and it is a condition of accessing publications that users recognize and abide by the legal requirements associated with these rights.

- Users may download and print one copy of any publication from the Research Portal for the purpose of private study or research.
- You may not further distribute the material or use it for any profit-making activity or commercial gain
- You may freely distribute the URL identifying the publication in the Research Portal

Take down policy

If you believe that this document breaches copyright please contact librarypure@kcl.ac.uk providing details, and we will remove access to the work immediately and investigate your claim.

Tobacco smoking and dopaminergic function in humans: a meta-analysis of molecular imaging studies

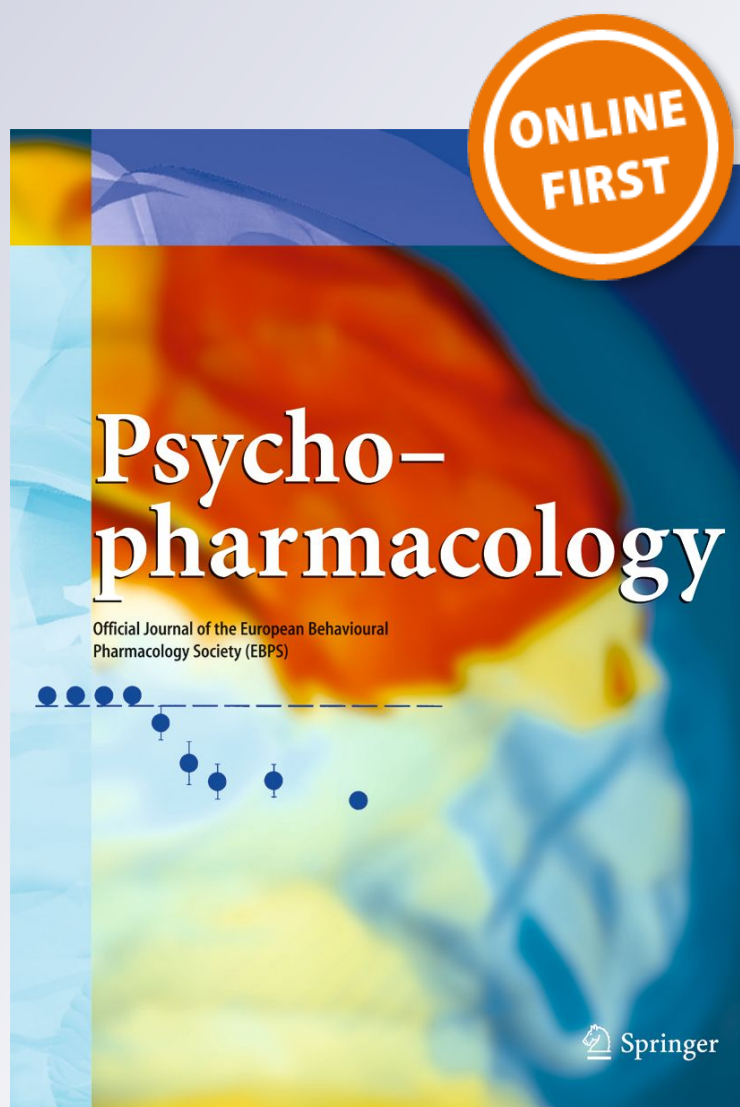
Abhishekh H. Ashok, Yuya Mizuno & Oliver D. Howes

Psychopharmacology

ISSN 0033-3158

Psychopharmacology

DOI 10.1007/s00213-019-05196-1



 Springer

Your article is published under the Creative Commons Attribution license which allows users to read, copy, distribute and make derivative works, as long as the author of the original work is cited. You may self-archive this article on your own website, an institutional repository or funder's repository and make it publicly available immediately.



Tobacco smoking and dopaminergic function in humans: a meta-analysis of molecular imaging studies

Abhishekh H. Ashok^{1,2,3} · Yuya Mizuno^{3,4} · Oliver D. Howes^{1,2,3}

Received: 6 December 2018 / Accepted: 7 February 2019
© The Author(s) 2019

Abstract

Rationale About 1.1 billion people smoke tobacco globally and tobacco-related health care costs 1.8% of GDP in many countries. The majority of people are unable to quit smoking despite pharmacological intervention, highlighting the need to understand the pathophysiology associated with tobacco smoking to aid the development of new therapeutics. The reinforcing effects of tobacco smoking are thought to be mediated by the dopamine system. However, the nature of dopamine dysfunction seen in smokers is unclear.

Objective To determine the nature and robustness of the evidence for dopaminergic alterations in smokers.

Methods The entire MEDLINE, EMBASE, and PsycINFO databases were searched for studies from inception date to November 18, 2018. In vivo human molecular imaging studies of dopamine measures (dopamine synthesis or release capacity, transporter levels, receptor levels) in tobacco smokers were selected. Demographic, clinical, and imaging measures were extracted from each study and meta-analyses, and sensitivity analyses were conducted.

Results Fourteen studies met inclusion criteria comprising a total sample of 219 tobacco smokers and 297 controls. The meta-analysis showed a significant reduction in dopamine transporter availability in the smokers relative to controls with an effect size of -0.72 ([95% CI, -1.38 to -0.05], $p = 0.03$). However, there was no difference in D2/3 receptor availability in smokers relative to controls ($d = -0.16$ ([95% CI, -0.42 to 0.1], $p = 0.23$). There were insufficient studies for meta-analysis of other measures. However, findings from the published studies indicated blunted dopamine release and lower D1 receptor availability, while findings for dopamine synthesis capacity were inconsistent.

Conclusion Our data indicate that striatal dopamine transporter availability is lower but D2/3 receptors are unaltered in smokers relative to controls. We discuss the putative mechanisms underlying this and their implications.

Keywords Tobacco smoking · Dopamine · Molecular imaging studies · Meta-analysis

Electronic supplementary material The online version of this article (<https://doi.org/10.1007/s00213-019-05196-1>) contains supplementary material, which is available to authorized users.

✉ Oliver D. Howes
oliver.howes@kcl.ac.uk

Abhishekh H. Ashok
abhishekh.ashok@lms.mrc.ac.uk

- ¹ Psychiatric Imaging Group, MRC London Institute of Medical Sciences Centre (LMS), Du Cane Road, London W12 0NN, UK
- ² Psychiatric Imaging Group, Faculty of Medicine, Imperial College London, Institute of Clinical Sciences (ICS), Du Cane Road, London, UK
- ³ Department of Psychosis Studies, Institute of Psychiatry, Psychology & Neuroscience, King's College London, 16 De Crespigny Park, London SE5 8AB, UK
- ⁴ Department of Neuropsychiatry, Keio University School of Medicine, Tokyo, Japan

Introduction

According to the World Health Organization, estimates of 1.1 billion people smoke tobacco and 6 million deaths/year are linked to tobacco use. Moreover, second-hand smoke exposure is responsible for additional 600,000 deaths (World Drug Report 2015; <https://www.unodc.org>). It is estimated that tobacco-related health care costs 1.8% of GDP in many countries (Goodchild et al. 2018). Dopaminergic alterations are hypothesized to underlie addictive behavior (Ashok et al. 2017; Di Chiara and Bassareo 2007; Keiflin and Janak 2015; Nutt et al. 2015; Volkow and Morales 2015; Willuhn et al. 2014). Consistent with this, nicotine in tobacco stimulates nicotinic acetyl cholinergic (nACh) receptors leading to dopamine release (Benowitz 2009). Furthermore, preclinical studies show that the acute rewarding effects of nicotine are

linked to two primary mechanisms. First, nicotine directly activates VTA dopaminergic neurons, which release dopamine in the nucleus accumbens (NAc). Second, it stimulates nAChR receptors located on the dopaminergic terminals augmenting dopamine release (Di Chiara and Imperato 1988; McGranahan et al. 2011; Zhang et al. 2009; Zhou et al. 2001). Positron emission tomography (PET) and single photon emission computed tomography (SPECT) enable dopaminergic indices to be measured in vivo in humans (Kim et al. 2013). A number of studies have investigated dopamine release, dopamine transporter, and dopamine receptor levels in smokers. However, the robustness of findings remains unclear and, to our knowledge, there has not been a previous meta-analysis of these findings. Thus, we aimed to synthesize the PET and SPECT imaging findings on dopaminergic function in smokers and to consider their implications for therapeutics. We group findings into studies of dopamine synthesis, dopamine release, dopamine transporter availability, and dopamine receptor availability. We focused on the whole striatum as it is richly innervated with dopaminergic neurons and reliably quantified with PET and SPECT in humans (Ashok et al. 2017; Egerton et al. 2010; Howes et al. 2012).

Methods

Study selection

To be included in the meta-analysis, an article needed to investigate the striatal dopaminergic system in human tobacco smokers. The MEDLINE, EMBASE, and PsycINFO databases were searched from inception date to November 18, 2018, for relevant papers without language restrictions. The electronic searches using EMBASE and PsycINFO were carried out together using Ovid. The following keywords were used: “(Positron Emission Tomography OR PET OR Single photon emission tomography OR SPET OR Single Photon Emission Computed Tomography OR SPECT) AND (dopamine OR dopamine release OR dopamine synthesis OR dopamine availability OR dopamine transporter OR dopamine reuptake OR dopamine receptor) AND (smoking OR nicotine OR nicotine dependence OR tobacco dependence)”. In addition, the reference lists in the included studies and relevant review papers were screened to search for additional studies. Further details of study selection are provided in the supplementary Fig. 1.

Inclusion and exclusion criteria

The inclusion criteria were as follows: 1) original molecular imaging studies that indexed dopamine receptors, or dopamine transporters and/or dopamine release or synthesis; 2) included a group of regular (daily) tobacco smokers; and 3)

reported data for the whole striatum or a striatal sub-region. We excluded studies which did not have a healthy control group or that included subjects with CNS co-morbidity. For studies with an overlap in participants, we included the study with the largest sample size without potentially missing any subject and excluded the smaller study from the meta-analysis to avoid duplication of subjects, consistent with previous molecular imaging meta-analyses (Ashok et al. 2017; Kambeitz et al. 2014).

Data extraction

The primary outcome measure was the difference in the dopaminergic imaging index between smokers and controls. The following variables were extracted from all the studies: authors, year of publication, subject characteristics of the control and smokers (group size, age, sex, substance use characteristics, comorbid substance abuse, method of abstinence confirmation, duration of abstinence, diagnosis), imaging characteristics (method, radio-tracer, scanner type and resolution), route of administration of drug challenge, and modeling method.

Data analysis

The main outcome measure was the effect size calculated as Hedges' g for the dopaminergic index for the whole striatum in the smokers using a random effects model. Publication bias was assessed by visual inspection of funnel plots and tested with a regression test for funnel plot asymmetry (mixed-effects meta-regression model). Trim and fill analysis was conducted to impute potentially missing studies. Heterogeneity was estimated using the I^2 value (I^2 values $< 50\%$ indicate low to moderate heterogeneity, whereas $I^2 > 50\%$ indicate moderate to high heterogeneity). A significance level of $p < 0.05$ (two-tailed) was taken as significant.

Results

The literature search yielded 610 records, from which we identified 19 relevant papers (see Supplementary Fig. 1 for the PRISMA diagram of the literature search). Fourteen of the 19 studies met criteria for inclusion in the quantitative synthesis. There was an insufficient number of studies for the meta-analysis of the D1 receptor ($n = 2$) and dopamine synthesis ($n = 3$) (Table 1).

Dopamine transporter

There were seven studies assessing dopamine transporter availability in 123 smokers and 184 healthy controls

Table 1 Molecular imaging studies on dopaminergic function in smokers

Dopamine system	Author / year	Smokers / Controls, n	Male smokers / male controls, n	Diagnosis	Years of smoking, mean (SD)	Number of cigarettes / day	Duration of abstinence	Region of interest	Reference region	Tracer	Results in smokers compared to controls
Dopamine Synthesis	Salokangas et al., 2000 (Salokangas et al., 2000)	9/10	9/10	Nicotine dependence (criteria not mentioned)	mean 19.8 years, range 15-25	mean 19.8, range 16-25	current smokers	caudate and putamen	occipital cx (Hietala et al., 1999)	18F-DOPA	↑ putamen and caudate
	Bloomfield et al., 2014 (Bloomfield et al., 2014)	15/15	10/10	12/15 smokers met DSM-IV criteria for nicotine dependence	not mentioned	8.1 (4.1)	current smokers	striatum	cerebellum	18F-DOPA	↔
	Redemacher et al., 2016 (Rademacher et al., 2016)	30/15	30/15	DSM-IV nicotine dependence	mean 11.7 years	17.7 (6.0)	current smokers or in acute abstinence (6 hours)	right and left Nac, ventral and dorsal caudate, ventral and dorsal putamen	cerebellum	18F-DOPA	↓
Dopamine Transporter	Staley et al., 2001 (Staley et al., 2001)	21/21	9/9	SCID, FTND and plasma cotinine	24.5 (10.0)	23.6 (4.3)	current smokers	striatum	cerebellum	123I-beta-CIT	↔
	Newberg et al., 2007 (Newberg et al., 2007)	8/46	4/21	Structured interview regarding smoking habits	not mentioned	15 (10)	current smokers	right and left caudate, anterior putamen, posterior putamen	supratentorial structures not specified	Tc-99m TRODAT-1	↓ bilateral caudate, right anterior putamen, left posterior putamen
	Yang et al., 2008 (Yang et al., 2008)	11/11	11/11	FTND (no cut-off defined), smoking history questionnaire	not mentioned	not mentioned	current smokers	striatum	occipital cx	Tc-99m TRODAT-1	↓
	Cosgrove et al., 2009 (Cosgrove et al., 2009b)	6/8	4/4	Plasma cotinine level >150ng/ml on day of intake	22.2 (9.7)	24.2 (4.9)	current smokers	striatum	cerebellum	123I-beta-CIT	↔
	Leroy et al., 2012 (Leroy et al., 2012)	14/11	14/11	DSM-IV nicotine dependence	12.1 (8.5)	17.6 (5.3)	current smokers	right and left dorsal caudate and dorsal putamen	cerebellum	11C-PE2I	↓
	Lin et al., 2012 (Lin et al., 2012)	37/23	22/8	Self-reported smoking habits	not mentioned	<1 pack per day (n=20), 1 pack≤ per day (n=17)	10-12 hours	striatum	occipital cx	Tc-99m TRODAT-1	↓
	Thomsen et al., 2013 (Thomsen et al., 2013)	26/64	15/34	Interview, Copenhagen Smoking Questionnaire (no cut-off given)	not mentioned	11.2 (8.6)	current smokers	striatum	cerebellum (Jensen et al., 2011)	123I-FP-CIT	↔ active smokers, ex-smokers and non-smokers
Dopamine release	Busto et al., 2009 (Busto et al., 2009)	9/11	8/3	FTND ≥ 3	mean 16.7 years	15.2 (3.3)	current smokers	striatum	cerebellum	11C-raclopride-oral d-amphetamine challenge	↓ (oral d-amphetamine challenge)
	Wiers et al., 2017 (Wiers et al., 2017)	8 current smokers, 10 ex-smokers/18	6,7/12	Smoking history	mean 11.0 years in current smokers, 11.2 years in ex-smokers	mean 7.43 in current smokers, 8.69 in ex-smokers	In ex-smokers mean abstinence-3.53 years	Caudate, putamen and ventral striatum	cerebellum	11C-raclopride-Methylphenidate challenge	↓ in current smokers and increased in ex-smokers, however it was not statistically significant

Dopamine receptor	Yang et al., 2006 (Yang et al., 2006)	15/15	15/15	FTND > 5, smoking for longer than 5 years	9.2 (8.7) years	18.75 (6.78)	current smokers	striatum	cerebellum	123-IBZM	↔
	Takahashi et al., 2008 (Takahashi et al., 2008)	6/6	6/6	Smoking history >4 years, at least 15 cigarettes/day, FTND (no cut-off defined)	At least 4 years	≥ 15	24 hours	right and left dorsal caudate, dorsal putamen, ventral caudate, ventral putamen	cerebellum	11C-raclopride	↔
	Yang et al., 2008 (Yang et al., 2008)	11/11	11/11	FTND (no cut-off defined), smoking history questionnaire	not mentioned	not mentioned	current smokers	striatum	occipital cx	123-IBZM	↔
	Busto et al., 2009 (Busto et al., 2009)	9/11	8/3	FTND ≥ 3	Mean 16.7 years	15.2 (3.3)	current smokers	striatum	cerebellum	11C-raclopride	↓
	Brown et al., 2012 (Brown et al., 2012)	19/18	10/9	nicotine dependence	240 (135), 250 (120) pack years (description error?)	13 (6.9)	current smokers	caudate and putamen	cerebellum	18F-Fallypride	↓ in male smokers than female smokers, and male non-smokers
	Albrecht et al., 2013 (Albrecht et al., 2013)	21/26	18/16	FTND (no cut-off defined)	Not mentioned	Not mentioned	Not mentioned (majority on nicotine patch)	left and right, pre- and post- dorsal caudate, dorsal putamen, and ventral striatum	cerebellum	11C-raclopride	↓
	Okita et al., 2016 (Okita et al., 2016)	18/19	11/10	13 smokers met DSM-IV criteria for nicotine dependence	13.8 (10.1) pack-years	13.3 (4.1)	Current smokers	caudate, putamen, midbrain, insula	cerebellum	18F-Fallypride	↔ in striatum Greater midbrain BPND in the female, but not male smokers than corresponding non-smokers
Wiers et al (Wiers et al., 2017)	8 current smokers, 10 ex-smokers/ 18	6,7/12	Smoking history	mean 11.0 years in current smokers, 11.2 years in ex-smokers	mean 7.43 in current smokers, 8.69 in ex-smokers	In ex-smokers mean abstinence- 3.53 years	Caudate, putamen and ventral striatum	cerebellum	11C-raclopride	↓ in current smokers compared to controls No difference between ex-smokers and controls	
D1 receptor	Dagher et al., 2001 (Dagher et al., 2001)	11/18	6/9	not mentioned	not mentioned	19.4 (6)	abuse of other drugs screened in interview	caudate, putamen, NAC	cerebellum	11C-SCH23390	↓
	Yasuno et al., 2007 (Yasuno et al., 2007)	18/12	17/12	DSM-IV nicotine dependence	not mentioned	mean 23.5	screened in interview	ventral striatum	cerebellum	11C-SCH23390	↓

(Cosgrove et al. 2009b; Leroy et al. 2012; Lin et al. 2012; Newberg et al. 2007; Staley et al. 2001; Thomsen et al. 2013; Yang et al. 2008). The meta-analysis showed a significant reduction in dopamine transporter availability in the smoker relative to control groups with an effect size of -0.72 ([95% CI, -1.38 to -0.05], $p = 0.03$) (Figure 1).

Heterogeneity and sensitivity analyses

The I^2 value was 84% (95% CI, 60–97%), indicating high heterogeneity between studies. The regression test for funnel plot asymmetry was not significant ($t = -0.5$, $df = 5$, $p = 0.64$). However, visual inspection of the funnel plot revealed asymmetry, indicating possible publication bias. The trim-and-fill analysis indicates two missing studies on the left side of the funnel plot (Supplementary Figure 2). However, the results remained significant after correcting for putatively missing studies (adjusted effect size = -1.0 , (95%CI, -1.6 to -0.37), $p < 0.01$).

Dopamine receptor availability

There were eight studies assessing dopamine receptor availability in 107 smokers and 124 healthy controls (Albrecht et al. 2013; Brown et al. 2012; Busto et al. 2009; Okita et al. 2016; Takahashi et al. 2008; Wiers et al. 2017; Yang et al. 2006, 2008). The meta-analysis revealed no significant difference in D2/3 receptor availability in smokers relative to controls with an effect size of -0.16 ([95% CI, -0.42 to 0.1], $p = 0.23$) (Figure 2).

Heterogeneity and sensitivity analyses

The I^2 value was 0% (95% CI, 0–79%), indicating heterogeneity was low. The regression test for funnel plot asymmetry was not significant ($t = -1.1$, $df = 6$, $p = 0.32$). However, a visual inspection of the funnel plot revealed asymmetry, indicating possible publication bias. The trim-and-fill analysis indicated that there were potentially one missing studies on the

left side of the funnel plot (Supplementary Fig. 3). Nevertheless, the summary effect size remained non-significant after correcting for these putatively missing studies (corrected effect size: -0.2 [95% CI, -0.45 to 0.05]; $z = -1.5$; $p = 0.12$).

Dopamine D1 receptor availability

Two studies reported D1 receptor availability, which used [^{11}C] SCH23390 to compare smokers with controls (Dagher et al. 2001; Yasuno et al. 2007). Both studies reported significant reductions in D1 receptor availability in smokers compared to controls.

Dopamine synthesis

Meta-analysis was not conducted as there were only three studies. There is a substantial discrepancy in the dopamine synthesis capacity in smokers. Salokangas et al. 2000 demonstrated higher dopamine synthesis in heavy smokers relative to controls (Salokangas et al. 2000), Bloomfield et al. 2014 showed no change in moderate smokers (Bloomfield et al. 2014b), while Rademacher et al. 2016 demonstrated lower dopamine synthesis relative to controls in a sample of heavy smokers who met criteria for dependence (Rademacher et al. 2016). Interestingly, reduced dopamine synthesis in heavy smokers normalized after 3 months of abstinence (Rademacher et al. 2016). Overall, the effect of smoking on dopamine synthesis is unclear and further studies in both moderate and heavy smokers are needed.

Dopamine release

Seminal work in the 1990s developed paradigms to assess dopamine release in vivo using molecular imaging (Breier et al. 1999; Laruelle et al. 1995). This and subsequent work has determined that the reduction in striatal binding of radiotracers such as [^{11}C]-raclopride following the administration of amphetamine or methylphenidate is closely related to the

Fig. 1 Studies of dopamine transporter availability in tobacco smokers relative to controls. The forest plot shows the effects sizes estimated using a random effects model and 95% confidence intervals of the difference between smokers and controls. There was an overall significant decrease in the dopamine transporter availability in smokers relative to controls with a moderate to large effect size (-0.72 [95% CI, -1.38 to -0.05], $p < 0.05$)

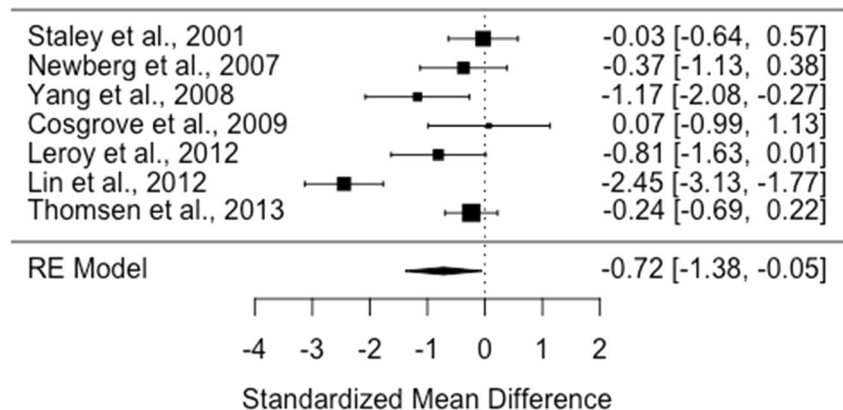
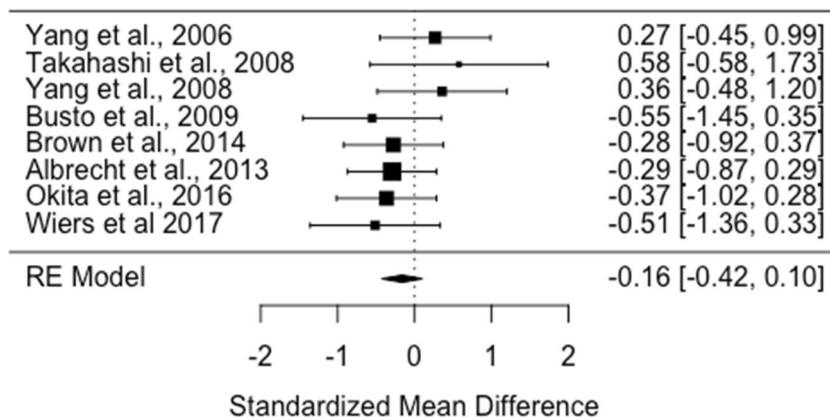


Fig. 2 Studies of dopamine D2/3 receptor availability in tobacco smokers relative to controls. The forest plot shows the effect sizes estimated using a random effects model and 95% confidence intervals of D2/3 receptor binding potentials. There was no significant difference in dopamine receptor availability in smokers compared to controls (-0.16 [95% CI, -0.42 to -0.1], $p > 0.05$)



magnitude of dopamine release (Abi-Dargham et al. 2009; Egerton et al. 2009). Only two studies investigated the dopamine release following amphetamine or methylphenidate. One study showed smokers had lower dopamine release compared to healthy control (Busto et al. 2009), while the other study reported a trend level reduction in dopamine release in smokers (Wiers et al. 2017). Thirteen studies measured dopamine release following nicotine administration during or prior to the scan (Barrett et al. 2004; Brody et al. 2010, 2009b, 2006b, 2004; Cosgrove et al. 2014; Domino et al. 2013; Le Foil et al. 2014; Montgomery et al. 2007; Scott et al. 2007a; Takahashi et al. 2008; Weinstein et al. 2016; Wing et al. 2015). The majority of these studies did not have control arm and there was substantial variation in the study design with respect to route of administration, scanning, and nicotine administration duration. Thus, these studies did not meet our inclusion criteria for meta-analysis. Two studies (Barrett et al. 2004; Montgomery et al. 2007) did not report change in binding potential while other studies reported 7–27% reduction in the binding potential (Brody et al. 2006b, 2004; Le Foil et al. 2014; Scott et al. 2007b; Takahashi et al. 2008).

Discussion

Our main findings are that dopamine transporter availability is reduced with a medium to large effect size and that D2/3 receptor availability is unaltered in smokers compared to healthy controls (Hedges' g : -0.72 and -0.16 respectively). Our sensitivity analyses of the dopamine D2/3 receptor availability showed consistent results, and we noted low heterogeneity. However, there was significant heterogeneity in the dopamine transporter finding.

There were insufficient studies to meta-analyze findings on dopamine synthesis in smokers, and the results of studies were inconsistent, indicating further, large studies are needed to determine if dopamine synthesis capacity is altered by smoking. Similarly, there were too few studies for meta-analyses of dopamine release or D1 receptor levels, although

findings indicated blunted dopamine release and lower D1 levels in smokers. However, there were only two studies for each of these dopamine measures, and the studies had small sample sizes. Thus, while results indicate blunted dopamine release and D1 levels in smokers, further studies are needed before the consistency and robustness of these alterations can be determined.

Our finding that D2/3 receptor levels are unaltered is consistent with post-mortem evidence, which also shows unaltered D2 receptor levels in smokers (Court et al. 1998). However, our finding of reduced dopamine transporter availability is not consistent with a human post-mortem study which found DAT levels to be unaltered in smokers (Court et al. 1998). This discrepancy between our in vivo findings and the human post-mortem study could reflect changes in post-mortem or differences in the techniques. This study used a [3H]mazindol binding assay, and evidence indicates mazindol binds to serotonin, norepinephrine, and dopamine transporters (Kung et al. 1995; Owens et al. 1997). Thus, binding to serotonin and norepinephrine transporters could have confounded the post-mortem findings, although it should be appreciated that this is also a potential issue for some PET radiotracers. In contrast, there is some preclinical evidence that DAT function is reduced after nicotine administration as measured by dopamine reuptake in the nucleus (Danielson et al. 2014), and that stimulation of acetylcholine receptor suppresses DAT activity (Huang et al. 1999), consistent with our findings.

Strengths and limitations

Similar to other meta-analyses of psychiatric imaging studies, there are variations between studies in terms of co-morbid use of other substances such as alcohol and variation in methods, in the radiotracer used, scanners and different definition of the striatum (Ashok et al. 2017; Howes et al. 2012) (Table 1 and Supplementary Table 1). The studies included in the meta-analysis used tracers such as TRODAT and beta-CIT to quantify DAT, but a potential issue is that these tracers also have

affinity for serotonin transporters (de Win et al. 2005; Dresel et al. 1999; Stengler-Wenzke et al. 2006). This, coupled with the experimental variables discussed above, could contribute to the relatively high inconsistency we found in the dopamine transporter findings. Nevertheless, the random effects model we used allows for variations in effects.

An association has been reported between a variable number tandem repeats (VNTR) polymorphism of DAT gene (SLC6A3) and DAT availability (Heinz et al. 2000) and this was replicated in an *in vitro* study (VanNess et al. 2005), although subsequent studies have been inconsistent (Faraone et al. 2014). Variation in other genes related to dopamine function has also been associated with differences dopamine imaging measures (Brody et al. 2006b; Dahoun et al. 2018). As the majority of the studies included in our meta-analysis have not reported genotype data, a potential confounding effect of genetic differences between groups influencing the results cannot be ruled out. Of course, the effects of these genetic variants on the dopamine system may be a mechanistic link that explains why some people are vulnerable to become tobacco smokers. In view of this, it would be useful for future studies to genotype participants for gene variants known to impact on the dopamine system where possible.

A few studies did not explicitly exclude comorbid substance use or report current and past substance use in subjects (see Supplementary Table 1 for details). A meta-analysis has shown that stimulant users have lower dopamine receptor, transporter, and release (Ashok et al. 2017) and alcohol, cannabis, and opiate use may also alter the dopaminergic system (Ashok et al. 2017; Bloomfield et al. 2016; Bloomfield et al. 2014a; Nutt et al. 2015). As such, it is possible that the inclusion of subjects with comorbid stimulant or other substance use could be a confound in some studies. However, the majority of the studies explicitly excluded subjects with current comorbid substance use, suggesting that comorbid substance use is unlikely to have had a major effect on our findings. Nevertheless, it would be useful for all future studies to either exclude comorbid substance use or report it to enable this possibility to be investigated further.

As shown in Table 1, there is substantial variation between studies in the duration of abstinence before the scan. Microdialysis studies have shown that dopamine release reaches peak between 20 and 40 min after nicotine administration and returns to baseline after 60 min (Marshall et al. 1997; Mifsud et al. 1989). As acute smoking-induced dopamine release can displace binding of radiotracers such as [¹¹C] raclopride (Brody et al. 2006b), recent smoking could be a potential confound. In addition, in a study which compared D2 receptor availability and release in a group of current and ex-smokers, prolonged abstinence was shown to normalize the dopaminergic alteration (Wiers et al. 2017). Future longitudinal studies would be useful to determine the temporal course of dopaminergic alterations and abstinence from

smoking. A general limitation of the literature is that there are few studies with large sample sizes in dopamine synthesis, release, and D1 receptor availability. Thus we could not meta-analyze these findings.

Implications for the understanding of the neurobiology of tobacco smoking

Preclinical studies using *in vivo* micro-dialysis have shown that the acute administration of nicotine increases extracellular dopamine concentrations in the striatum, specifically in nucleus accumbens (Damsma et al. 1988; Gaddnas et al. 2001; McCallum et al. 2012; Watkins et al. 2000). Knockout animal models have shown that nicotinic acetylcholine receptor stimulation is required for this effect (Marubio et al. 2003; Picciotto et al. 1999). Human *in vivo* imaging studies also show that acute exposure to nicotine leads to increased synaptic dopamine, despite substantial variation in study methodology (Barrett et al. 2004; Brody et al. 2010, 2009b, 2004; Cosgrove et al. 2015; Domino et al. 2012, 2013; Le Foll et al. 2014; Montgomery et al. 2007; Scott et al. 2007b). Moreover, molecular imaging studies have shown that occupancy of the nicotinic acetylcholine receptor is associated with the subjective hedonic response of smoking (Brody et al. 2009a, 2011, 2006a, 2014, 2013; Cosgrove et al. 2009a; Cosgrove et al. 2012; Dubroff et al. 2015; Lotfipour et al. 2012; Staley et al. 2006). Thus, there is converging evidence from pre-clinical and human studies that nicotinic acetylcholine receptor-induced dopamine release occurs acutely with tobacco smoking.

In contrast, preclinical studies have shown that chronic (3–4 weeks) nicotine exposure reduces basal dopamine level (Zhang et al. 2012). Electrophysiological studies are consistent with these findings and report that chronic nicotine administration reduces the firing rate of A10 dopamine neurons (Rasmussen and Czachura 1995). However, D2 receptor availability remains unaltered in chronically nicotine-treated rats (Kirch et al. 1992). Our findings in humans on D2 receptor availability in smokers are consistent with these findings.

Two basic models are possible to account for our findings of reduced dopamine transporter and unaltered D2 receptor availability. The first is that reduced transporter levels may be compensatory in response to reduced tonic dopamine levels or other dopaminergic changes in the synapse. However, normal D2/3 receptor levels are less easy to understand in the context of presynaptic reductions, as it would be expected that they would increase in response to reduced tonic dopamine levels, albeit longitudinal studies are needed to test whether there is a change in D2/3 receptor levels with chronic smoking in humans.

The second model is that lower dopamine transporter levels may underlie the pathoetiology of smoking, and precede its onset. Thus, individuals at risk of smoking may have lower

dopamine transporter levels secondary to genetic and environmental risk factors. Lower transporter levels may then mean that the acute effects of smoking, including dopamine release, are larger, potentially making these individuals more vulnerable to become regular users. Future longitudinal human PET studies are needed to investigate changes in the dopamine transporter levels, and other aspects of the dopamine system, prior to and during nicotine addiction, and following cessation to test these models. This will also potentially identify biomarkers to guide treatment and predict outcomes.

Conclusions

There is evidence for lower dopamine transporter availability with a moderate to large effect size but normal D2 dopamine receptor availability in smokers. These findings identify dopamine transporter abnormalities as either involved in the pathophysiology of tobacco dependence or as a biological response to long-term exposure to tobacco. Further studies are needed to determine the nature of alterations in other aspects of the dopamine system, and whether there are longitudinal changes in dopamine transporter levels during the acquisition of a smoking habit.

Funding/support This study was funded by grants MC-A656-5QD30 from the Medical Research Council-UK, 666 from the Maudsley Charity 094849/Z/10/Z from the Brain and Behavior Research Foundation, and Wellcome Trust to Dr. Howes and King's College London scholarship to Dr. Ashok.

Role of the funder/sponsor The funders had no role in the design and conduct of the study; collection, management, analysis, and interpretation of the data; preparation, review, or approval of the manuscript; and decision to submit the manuscript for publication.

Author contributions Dr. Ashok and Dr. Mizuno had full access to all the data in the study and took responsibility for the integrity of the data and the accuracy of the data analysis.

Study concept and design: Ashok and Howes

Acquisition, analysis, or interpretation of data: All authors

Drafting of the manuscript: All authors

Critical revision of the manuscript for important intellectual content:

All authors

Statistical analysis: Ashok

Administrative, technical, or material support: Ashok and Mizuno

Study supervision: Howes

Compliance with ethical standards

Conflict of interest disclosure Dr. Ashok conducts research funded by the Medical Research Council (UK) and King's College London. Dr. Mizuno has received manuscript fees or speaker's honoraria from Sumitomo Dainippon Pharma and Yoshitomi Yakuhin, fellowship grants from Japan Society for the Promotion of Science, Astellas Foundation for Research on Metabolic Disorders, Japanese Society of Clinical Neuropsychopharmacology, and Mochida Memorial Foundation for Medical and Pharmaceutical Research, and consultant fees from Bracket within the past 3 years. Prof. Howes conducts research funded

by the Medical Research Council (UK), the National Institute of Health Research (UK), and the Maudsley Charity. Prof Howes has received investigator-initiated research funding from and/or participated in advisory/speaker meetings organized by Astra-Zeneca, BMS, Eli Lilly, Janssen, Lundbeck, Lyden-Delta, Servier, and Roche. Neither Prof. Howes nor his family have been employed by or have holdings/of a financial stake in any biomedical company.

Open Access This article is distributed under the terms of the Creative Commons Attribution 4.0 International License (<http://creativecommons.org/licenses/by/4.0/>), which permits unrestricted use, distribution, and reproduction in any medium, provided you give appropriate credit to the original author(s) and the source, provide a link to the Creative Commons license, and indicate if changes were made.

References

- Abi-Dargham A, van de Giessen E, Slifstein M, Kegeles LS, Laruelle M (2009) Baseline and amphetamine-stimulated dopamine activity are related in drug-naïve schizophrenic subjects. *Biol Psychiatry* 65: 1091–1093
- Albrecht DS, Kareken DA, Yoder KK (2013) Effects of smoking on D2/D3 striatal receptor availability in alcoholics and social drinkers. *Brain Imaging Behav* 7:326–334
- Ashok AH, Mizuno Y, Volkow ND, Howes OD (2017) Association of stimulant use with dopaminergic alterations in users of cocaine, amphetamine, or methamphetamine: a systematic review and meta-analysis. *JAMA Psychiatry* 74:511–519
- Barrett SP, Boileau I, Okker J, Pihl RO, Dagher A (2004) The hedonic response to cigarette smoking is proportional to dopamine release in the human striatum as measured by positron emission tomography and [¹¹C]raclopride. *Synapse* 54:65–71
- Benowitz NL (2009) Pharmacology of nicotine: addiction, smoking-induced disease, and therapeutics. *Annu Rev Pharmacol Toxicol* 49:57–71
- Bloomfield MA, Morgan CJ, Egerton A, Kapur S, Curran HV, Howes OD (2014a) Dopaminergic function in cannabis users and its relationship to cannabis-induced psychotic symptoms. *Biol Psychiatry* 75:470–478
- Bloomfield MAP, Pepper F, Egerton A, Demjaha A, Tomasi G, Mouchlianitis E, Maximen L, Veronese M, Turkheimer F, Selvaraj S, Howes OD (2014b) Dopamine function in cigarette smokers: an [¹⁸]DOPA PET study. *Neuropsychopharmacology* 39:2397–2404
- Bloomfield MA, Ashok AH, Volkow ND, Howes OD (2016) The effects of delta(9)-tetrahydrocannabinol on the dopamine system. *Nature* 539:369–377
- Breier A, Su TP, Malhotra AK, Elman I, Adler CM, Weisenfeld NI, Pickar D (1999) Effects of atypical antipsychotic drug treatment on amphetamine-induced striatal dopamine release in patients with psychotic disorders. *Neuropsychopharmacology* 20:340–345
- Brody AL, Olmstead RE, London ED, Farahi J, Meyer JH, Grossman P, Lee GS, Huang J, Hahn EL, Mandelkern MA (2004) Smoking-induced ventral striatum dopamine release. *Am J Psychiatry* 161: 1211–1218
- Brody AL, Mandelkern MA, London ED, Olmstead RE, Farahi J, Scheibal D, Jou J, Allen V, Tiongson E, Chefer SI, Koren AO, Mukhin AG (2006a) Cigarette smoking saturates brain alpha 4 beta 2 nicotinic acetylcholine receptors. *Arch Gen Psychiatry* 63:907–915
- Brody AL, Mandelkern MA, Olmstead RE, Scheibal D, Hahn E, Shiraga S, Zamora-Paja E, Farahi J, Saxena S, London ED, McCracken JT (2006b) Gene variants of brain dopamine pathways and smoking-

- induced dopamine release in the ventral caudate/nucleus accumbens. *Arch Gen Psychiatry* 63:808–816
- Brody AL, Mandelkern MA, Costello MR, Abrams AL, Scheibal D, Farahi J, London ED, Olmstead RE, Rose JE, Mukhin AG (2009a) Brain nicotinic acetylcholine receptor occupancy: effect of smoking a denicotinized cigarette. *Int J Neuropsychopharmacol* 12:305–316
- Brody AL, Mandelkern MA, Olmstead RE, Allen-Martinez Z, Scheibal D, Abrams AL, Costello MR, Farahi J, Saxena S, Monterosso J, London ED (2009b) Ventral striatal dopamine release in response to smoking a regular vs a denicotinized cigarette. *Neuropsychopharmacology* 34:282–289
- Brody AL, London ED, Olmstead RE, Allen-Martinez Z, Shulenberger S, Costello MR, Abrams AL, Scheibal D, Farahi J, Shoptaw S, Mandelkern MA (2010) Smoking-induced change in intrasynaptic dopamine concentration: effect of treatment for tobacco dependence. *Psychiatry Res Neuroimaging* 183:218–224
- Brody AL, Mandelkern MA, London ED, Khan A, Kozman D, Costello MR, Vellios EE, Archie MM, Bascom R, Mukhin AG (2011) Effect of secondhand smoke on occupancy of nicotinic acetylcholine receptors in brain. *Arch Gen Psychiatry* 68:953–960
- Brody AL, Mukhin AG, Stephanie S, Mamoun MS, Kozman M, Phuong J, Neary M, Luu T, Mandelkern MA (2013) Treatment for tobacco dependence: effect on brain nicotinic acetylcholine receptor density. *Neuropsychopharmacology* 38:1548–1556
- Brody AL, Mukhin AG, Mamoun MS, Luu T, Neary M, Liang L, Shieh J, Sugar CA, Rose JE, Mandelkern MA (2014) Brain nicotinic acetylcholine receptor availability and response to smoking cessation treatment: a randomized trial. *JAMA Psychiatry* 71:797–805
- Brown AK, Mandelkern MA, Farahi J, Robertson C, Ghahremani DG, Sumerel B, Moallem N, London ED (2012) Sex differences in striatal dopamine D2/D3 receptor availability in smokers and non-smokers. *Int J Neuropsychopharmacol* 15:989–994
- Busto UE, Redden L, Mayberg H, Kapur S, Houle S, Zawertailo LA (2009) Dopaminergic activity in depressed smokers: a positron emission tomography study. *Synapse* 63:681–689
- Cosgrove KP, Batis J, Bois F, Maciejewski PK, Esterlis I, Kloczynski T, Stiklus S, Krishnan-Sarin S, O'Malley S, Perry E, Tamagnan G, Seibyl JP, Staley JK (2009a) beta2-nicotinic acetylcholine receptor availability during acute and prolonged abstinence from tobacco smoking. *Arch Gen Psychiatry* 66:666–676
- Cosgrove KP, Krantzler E, Frohlich EB, Stiklus S, Pittman B, Tamagnan GD, Baldwin RM, Bois F, Seibyl JP, Krystal JH, O'Malley SS, Staley JK (2009b) Dopamine and serotonin transporter availability during acute alcohol withdrawal: effects of comorbid tobacco smoking. *Neuropsychopharmacology* 34:2218–2226
- Cosgrove KP, Esterlis I, McKee SA, Bois F, Seibyl JP, Mazure CM, Krishnan-Sarin S, Staley JK, Picciotto MR, O'Malley SS (2012) Sex differences in availability of beta2*-nicotinic acetylcholine receptors in recently abstinent tobacco smokers. *Arch Gen Psychiatry* 69:418–427
- Cosgrove KP, Wang S, Kim SJ, McGovern E, Nabulsi N, Gao H, Labaree D, Tagare HD, Sullivan JM, Morris ED (2014) Sex differences in the brain's dopamine signature of cigarette smoking. *J Neurosci* 34:16851–16855
- Cosgrove KP, Esterlis I, Sandiego C, Petrulli R, Morris ED (2015) Imaging tobacco smoking with PET and SPECT. *Curr Top Behav Neurosci* 24:1–17
- Court JA, Lloyd S, Thomas N, Piggott MA, Marshall EF, Morris CM, Lamb H, Perry RH, Johnson M, Perry EK (1998) Dopamine and nicotinic receptor binding and the levels of dopamine and homovanillic acid in human brain related to tobacco use. *Neuroscience* 87:63–78
- Dagher A, Bleicher C, Aston JAD, Gunn RN, Clarke PBS, Cumming P (2001) Reduced dopamine D1 receptor binding in the ventral striatum of cigarette smokers. *Synapse* 42:48–53
- Dahoun T, Pardinias AF, Veronese M, Bloomfield MAP, Jauhar S, Bonoldi I, Froudish-Walsh S, Nosarti C, Korth C, Hennah W, Walters J, Prata D, Howes OD (2018) The effect of the DISC1 Ser704Cys polymorphism on striatal dopamine synthesis capacity: an [18F]-DOPA PET study. *Hum Mol Genet* 27:3498–3506
- Damsma G, Westerink BH, de Vries JB, Horn AS (1988) The effect of systemically applied cholinergic drugs on the striatal release of dopamine and its metabolites, as determined by automated brain dialysis in conscious rats. *Neurosci Lett* 89:349–354
- Danielson K, Putt F, Truman P, Kivell BM (2014) The effects of nicotine and tobacco particulate matter on dopamine uptake in the rat brain. *Synapse (New York, N.Y.)* 68:45–60
- de Win MM, Habraken JB, Reneman L, van den Brink W, den Heeten GJ, Booij J (2005) Validation of [(123I)]beta-CIT SPECT to assess serotonin transporters in vivo in humans: a double-blind, placebo-controlled, crossover study with the selective serotonin reuptake inhibitor citalopram. *Neuropsychopharmacology* 30:996–1005
- Di Chiara G, Bassareo V (2007) Reward system and addiction: what dopamine does and doesn't do. *Curr Opin Pharmacol* 7:69–76
- Di Chiara G, Imperato A (1988) Drugs abused by humans preferentially increase synaptic dopamine concentrations in the mesolimbic system of freely moving rats. *Proc Natl Acad Sci U S A* 85:5274–5278
- Domino EF, Evans CL, Ni L, Guthrie SK, Koepp RA, Zubieta JK (2012) Tobacco smoking produces greater striatal dopamine release in G-allele carriers with mu opioid receptor A118G polymorphism. *Prog Neuro-Psychopharmacol Biol Psychiatry* 38:236–240
- Domino EF, Ni L, Domino JS, Yang W, Evans C, Guthrie S, Wang H, Koepp RA, Zubieta JK (2013) Denicotinized versus average nicotine tobacco cigarette smoking differentially releases striatal dopamine. *Nicotine Tob Res* 15:11–21
- Dresel SH, Kung MP, Huang X, Plossl K, Hou C, Shiue CY, Karp J, Kung HF (1999) In vivo imaging of serotonin transporters with [99mTc]TRODAT-1 in nonhuman primates. *Eur J Nucl Med* 26:342–347
- Dubroff JG, Doot RK, Falcone M, Schnoll RA, Ray R, Tyndale RF, Brody AL, Hou C, Schmitz A, Lerman C (2015) Decreased nicotinic receptor availability in smokers with slow rates of nicotine metabolism. *J Nucl Med* 56:1724–1729
- Egerton A, Mehta MA, Montgomery AJ, Lappin JM, Howes OD, Reeves SJ, Cunningham VJ, Grasby PM (2009) The dopaminergic basis of human behaviors: a review of molecular imaging studies. *Neurosci Biobehav Rev* 33:1109–1132
- Egerton A, Demjaha A, McGuire P, Mehta MA, Howes OD (2010) The test-retest reliability of 18F-DOPA PET in assessing striatal and extrastriatal presynaptic dopaminergic function. *NeuroImage* 50:524–531
- Faraone SV, Spencer TJ, Madras BK, Zhang-James Y, Biederman J (2014) Functional effects of dopamine transporter gene genotypes on in vivo dopamine transporter functioning: a meta-analysis. *Mol Psychiatry* 19:880–889
- Gaddnas H, Pietila K, Piepponen TP, Ahtee L (2001) Enhanced motor activity and brain dopamine turnover in mice during long-term nicotine administration in the drinking water. *Pharmacol Biochem Behav* 70:497–503
- Goodchild M, Nargis N, Tursan d'Espaignet E (2018) Global economic cost of smoking-attributable diseases. *Tob Control* 27:58–64
- Heinz A, Goldman D, Jones DW, Palmour R, Hommer D, Gorey JG, Lee KS, Linnoila M, Weinberger DR (2000) Genotype influences in vivo dopamine transporter availability in human striatum. *Neuropsychopharmacology* 22:133–139
- Howes OD, Kambeitz J, Kim E, Stahl D, Slifstein M, Abi-Dargham A, Kapur S (2012) The nature of dopamine dysfunction in schizophrenia and what this means for treatment. *Arch Gen Psychiatry* 69:776–786
- Huang CL, Chen HC, Huang NK, Yang DM, Kao LS, Chen JC, Lai HL, Chern Y (1999) Modulation of dopamine transporter activity by

- nicotinic acetylcholine receptors and membrane depolarization in rat pheochromocytoma PC12 cells. *J Neurochem* 72:2437–2444
- Kambeitz J, Abi-Dargham A, Kapur S, Howes OD (2014) Alterations in cortical and extrastriatal subcortical dopamine function in schizophrenia: systematic review and meta-analysis of imaging studies. *Br J Psychiatry J Ment Sci* 204:420–429
- Keiflin R, Janak PH (2015) Dopamine prediction errors in reward learning and addiction: from theory to neural circuitry. *Neuron* 88:247–263
- Kim E, Howes OD, Kapur S (2013) Molecular imaging as a guide for the treatment of central nervous system disorders. *Dialogues Clin Neurosci* 15:315–328
- Kirch DG, Taylor TR, Creese I, Xu SX, Wyatt RJ (1992) Effect of chronic nicotine treatment and withdrawal on rat striatal D1 and D2 dopamine receptors. *J Pharm Pharmacol* 44:89–92
- Kung MP, Essman WD, Frederick D, Meegalla S, Goodman M, Mu M, Lucki I, Kung HF (1995) IPT: a novel iodinated ligand for the CNS dopamine transporter. *Synapse (New York, N.Y.)* 20:316–324
- Laruelle M, Abi-Dargham A, van Dyck CH, Rosenblatt W, Zea-Ponce Y, Zoghbi SS, Baldwin RM, Charney DS, Hoffer PB, Kung HF et al (1995) SPECT imaging of striatal dopamine release after amphetamine challenge. *J Nucl Med* 36:1182–1190
- Le Foil B, Guranda M, Wilson AA, Houle S, Rusjan PM, Wing VC, Zawertailo L, Busto U, Selby P, Brody AL, George TP, Boileau I (2014) Elevation of dopamine induced by cigarette smoking: novel insights from a [¹¹C]-(+)-PHNO PET study in humans. [references]. *Neuropsychopharmacology* 39:415–424
- Le Foil B, Guranda M, Wilson AA, Houle S, Rusjan PM, Wing VC, Zawertailo L, Busto U, Selby P, Brody AL, George TP, Boileau I (2014) Elevation of dopamine induced by cigarette smoking: novel insights from a [¹¹C]-+)-PHNO PET study in humans. *Neuropsychopharmacology* 39:415–424
- Leroy C, Karila L, Martinot JL, Lukasiewicz M, Duchesnay E, Comtat C, Dolle F, Benyamina A, Artiges E, Ribeiro MJ, Reynaud M, Trichard C (2012) Striatal and extrastriatal dopamine transporter in cannabis and tobacco addiction: a high-resolution PET study. *Addict Biol* 17: 981–990
- Lin CY, Yeh CH, Chang TT, Kao CH, Tsai SY (2012) Smoking, dopamine transporter, and hand tremor. *Clin Nucl Med* 37:35–38
- Lotfipour S, Mandelkern M, Alvarez-Estrada M, Brody AL (2012) A single administration of low-dose varenicline saturates alpha4beta2* nicotinic acetylcholine receptors in the human brain. *Neuropsychopharmacology* 37:1738–1748
- Marshall DL, Redfern PH, Wonnacott S (1997) Presynaptic nicotinic modulation of dopamine release in the three ascending pathways studied by in vivo microdialysis: comparison of naive and chronic nicotine-treated rats. *J Neurochem* 68:1511–1519
- Marubio LM, Gardier AM, Durier S, David D, Klink R, Arroyo-Jimenez MM, McIntosh JM, Rossi F, Champiaux N, Zoli M, Changeux JP (2003) Effects of nicotine in the dopaminergic system of mice lacking the alpha4 subunit of neuronal nicotinic acetylcholine receptors. *Eur J Neurosci* 17:1329–1337
- McCallum SE, Cowe MA, Lewis SW, Glick SD (2012) alpha3beta4 nicotinic acetylcholine receptors in the medial habenula modulate the mesolimbic dopaminergic response to acute nicotine in vivo. *Neuropharmacology* 63:434–440
- McGranahan TM, Patzlaff NE, Grady SR, Heinemann SF, Booker TK (2011) alpha4beta2 nicotinic acetylcholine receptors on dopaminergic neurons mediate nicotine reward and anxiety relief. *J Neurosci* 31:10891–10902
- Mifsud JC, Hernandez L, Hoebel BG (1989) Nicotine infused into the nucleus accumbens increases synaptic dopamine as measured by in vivo microdialysis. *Brain Res* 478:365–367
- Montgomery AJ, Lingford-Hughes AR, Egerton A, Nutt DJ, Grasby PM (2007) The effect of nicotine on striatal dopamine release in man: A [¹¹C]raclopride PET study. *Synapse* 61:637–645
- Newberg A, Lerman C, Wintering N, Ploessl K, Mozley PD (2007) Dopamine transporter binding in smokers and nonsmokers. *Clin Nucl Med* 32:452–455
- Nutt DJ, Lingford-Hughes A, Erritzoe D, Stokes PR (2015) The dopamine theory of addiction: 40 years of highs and lows. *Nat Rev Neurosci* 16:305–312
- Okita K, Petersen N, Robertson CL, Dean AC, Mandelkern MA, London ED (2016) Sex differences in midbrain dopamine D2-type receptor availability and association with nicotine dependence. *Neuropsychopharmacology* 41:2913–2919
- Owens MJ, Morgan WN, Plott SJ, Nemeroff CB (1997) Neurotransmitter receptor and transporter binding profile of antidepressants and their metabolites. *J Pharmacol Exp Ther* 283:1305–1322
- Picciozzo MR, Zoli M, Changeux JP (1999) Use of knock-out mice to determine the molecular basis for the actions of nicotine. *Nicotine Tob Res* 1(Suppl 2):S121–S125 discussion S139–140
- Rademacher L, Prinz S, Winz O, Henkel K, Dietrich CA, Schmaljohann J, Mohammadkhani Shali S, Schabram I, Stoppe C, Cumming P, Hilgers RD, Kumakura Y, Coburn M, Mottaghy FM, Grunder G, Vernaleken I (2016) Effects of smoking cessation on presynaptic dopamine function of addicted male smokers. *Biol Psychiatry* 80: 198–206
- Rasmussen K, Czachura JF (1995) Nicotine withdrawal leads to increased firing rates of midbrain dopamine neurons. *Neuroreport* 7: 329–332
- Salokangas RK, Vilkmann H, Ilonen T, Taiminen T, Bergman J, Haaparanta M, Solin O, Alanen A, Syvalahti E, Hietala J (2000) High levels of dopamine activity in the basal ganglia of cigarette smokers. *Am J Psychiatr* 157:632–634
- Scott DJ, Domino EF, Heitzeg MM, Koeppe RA, Ni L, Guthrie S, Zubieta J-K (2007a) Smoking modulation of micro-opioid and dopamine D2 receptor-mediated neurotransmission in humans. *Neuropsychopharmacology* 32:450–457
- Scott DJ, Domino EF, Heitzeg MM, Koeppe RA, Ni L, Guthrie S, Zubieta JK (2007b) Smoking modulation of mu-opioid and dopamine D2 receptor-mediated neurotransmission in humans. *Neuropsychopharmacology* 32:450–457
- Staley JK, Krishnan-Sarin S, Zoghbi S, Tamagnan G, Fujita M, Seibyl JP, Maciejewski PK, O'Malley S, Innis RB (2001) Sex differences in [¹²³I]beta-CIT SPECT measures of dopamine and serotonin transporter availability in healthy smokers and nonsmokers. *Synapse* 41: 275–284
- Staley JK, Krishnan-Sarin S, Cosgrove KP, Krantzler E, Frohlich E, Perry E, Dubin JA, Estok K, Brenner E, Baldwin RM, Tamagnan GD, Seibyl JP, Jatlow P, Picciozzo MR, London ED, O'Malley S, van Dyck CH (2006) Human tobacco smokers in early abstinence have higher levels of beta2* nicotinic acetylcholine receptors than nonsmokers. *J Neurosci* 26:8707–8714
- Stengler-Wenzke K, Muller U, Barthel H, Angermeyer MC, Sabri O, Hesse S (2006) Serotonin transporter imaging with [¹²³I]beta-CIT SPECT before and after one year of citalopram treatment of obsessive-compulsive disorder. *Neuropsychobiology* 53:40–45
- Takahashi H, Fujimura Y, Hayashi M, Takano H, Kato M, Okubo Y, Kanno I, Ito H, Suhara T (2008) Enhanced dopamine release by nicotine in cigarette smokers: a double-blind, randomized, placebo-controlled pilot study. *Int J Neuropsychopharmacol* 11: 413–417
- Thomsen G, Knudsen GM, Jensen PS, Ziebell M, Holst KK, Asenbaum S, Booij J, Darcourt J, Dickson JC, Kapucu OL, Nobili F, Sabri O, Sera T, Tatsch K, Tossici-Bolt L, van Laere K, Borght TV, Varrone A, Pagani M, Pinborg LH (2013) No difference in striatal dopamine transporter availability between active smokers, ex-smokers and non-smokers using [¹²³I]FP-CIT (DaTSCAN) and SPECT. *EJNMMI Res* 3:1–7

- VanNess SH, Owens MJ, Kilts CD (2005) The variable number of tandem repeats element in DAT1 regulates in vitro dopamine transporter density. *BMC Genet* 6:55
- Volkow ND, Morales M (2015) The brain on drugs: from reward to addiction. *Cell* 162:712–725
- Watkins SS, Koob GF, Markou A (2000) Neural mechanisms underlying nicotine addiction: acute positive reinforcement and withdrawal. *Nicotine Tob Res* 2:19–37
- Weinstein AM, Freedman N, Greif J, Yemini Z, Mishani E, London E, Chisin R, Bocher M (2016) Negative association of pretreatment cigarette use with smoking-induced striatal dopamine release in smokers receiving bupropion treatment. *Am J Addict* 25:486–492
- Wiers CE, Cabrera EA, Tomasi D, Wong CT, Demiral SB, Kim SW, Wang GJ, Volkow ND (2017) Striatal dopamine D2/D3 receptor availability varies across smoking status. *Neuropsychopharmacology* 42:2325–2332
- Willuhn I, Burgeno LM, Groblewski PA, Phillips PE (2014) Excessive cocaine use results from decreased phasic dopamine signaling in the striatum. *Nat Neurosci* 17:704–709
- Wing VC, Payer DE, Houle S, George TP, Boileau I (2015) Measuring cigarette smoking-induced cortical dopamine release: a [¹¹C]FLB-457 PET study. [references]. *Neuropsychopharmacology* 40:1417–1427
- Yang YK, Yao WJ, McEvoy JP, Chu CL, Lee IH, Chen PS, Yeh TL, Chiu NT (2006) Striatal dopamine D2/D3 receptor availability in male smokers. *Psychiatry Res* 146:87–90
- Yang YK, Yao WJ, Yeh TL, Lee IH, Chen PS, Lu RB, Chiu NT (2008) Decreased dopamine transporter availability in male smokers - a dual isotope SPECT study. *Prog Neuro-Psychopharmacol Biol Psychiatry* 32:274–279
- Yasuno F, Ota M, Ando K, Ando T, Maeda J, Ichimiya T, Takano A, Doronbekov TK, Fujimura Y, Nozaki S, Suhara T (2007) Role of ventral striatal dopamine D1 receptor in cigarette craving. *Biol Psychiatry* 61:1252–1259
- Zhang L, Doyon WM, Clark JJ, Phillips PE, Dani JA (2009) Controls of tonic and phasic dopamine transmission in the dorsal and ventral striatum. *Mol Pharmacol* 76:396–404
- Zhang L, Dong Y, Doyon WM, Dani JA (2012) Withdrawal from chronic nicotine exposure alters dopamine signaling dynamics in the nucleus accumbens. *Biol Psychiatry* 71:184–191
- Zhou FM, Liang Y, Dani JA (2001) Endogenous nicotinic cholinergic activity regulates dopamine release in the striatum. *Nat Neurosci* 4:1224–1229

Publisher's note Springer Nature remains neutral with regard to jurisdictional claims in published maps and institutional affiliations.