



King's Research Portal

DOI:

[10.1136/gutjnl-2018-317805](https://doi.org/10.1136/gutjnl-2018-317805)

Document Version

Publisher's PDF, also known as Version of record

[Link to publication record in King's Research Portal](#)

Citation for published version (APA):

ACTIB trial group, Everitt, H. A., Landau, S., O'Reilly, G., Sibelli, A., Stephanie, H., Windgassen, S., Holland, R., Paul, L., McCrone, P., Felicity, B., Goldsmith, K., Coleman, N., Logan, R., Chalder, T., & Moss-Morris, R. (2019). Assessing telephone-delivered cognitive-behavioural therapy (CBT) and web-delivered CBT versus treatment as usual in irritable bowel syndrome (ACTIB): a multicentre randomised trial. *Gut*, *68*(9), 1613-1623. <https://doi.org/10.1136/gutjnl-2018-317805>

Citing this paper

Please note that where the full-text provided on King's Research Portal is the Author Accepted Manuscript or Post-Print version this may differ from the final Published version. If citing, it is advised that you check and use the publisher's definitive version for pagination, volume/issue, and date of publication details. And where the final published version is provided on the Research Portal, if citing you are again advised to check the publisher's website for any subsequent corrections.

General rights

Copyright and moral rights for the publications made accessible in the Research Portal are retained by the authors and/or other copyright owners and it is a condition of accessing publications that users recognize and abide by the legal requirements associated with these rights.

- Users may download and print one copy of any publication from the Research Portal for the purpose of private study or research.
- You may not further distribute the material or use it for any profit-making activity or commercial gain
- You may freely distribute the URL identifying the publication in the Research Portal

Take down policy

If you believe that this document breaches copyright please contact librarypure@kcl.ac.uk providing details, and we will remove access to the work immediately and investigate your claim.



OPEN ACCESS

ORIGINAL ARTICLE

Assessing telephone-delivered cognitive–behavioural therapy (CBT) and web-delivered CBT versus treatment as usual in irritable bowel syndrome (ACTIB): a multicentre randomised trial

Hazel Anne Everitt,¹ Sabine Landau,² Gilly O'Reilly,¹ Alice Sibelli,³ Stephanie Hughes,¹ Sula Windgassen,³ Rachel Holland,² Paul Little,¹ Paul McCrone,⁴ Felicity Bishop,⁵ Kimberley Goldsmith,² Nicholas Coleman,⁶ Robert Logan,⁷ Trudie Chalder,⁸ Rona Moss-Morris,³ on behalf of ACTIB trial group

► Additional material is published online only. To view please visit the journal online (<http://dx.doi.org/10.1136/gutjnl-2018-317805>).

For numbered affiliations see end of article.

Correspondence to

Associate Prof Hazel Anne Everitt, Primary Care and Population Sciences, Southampton University, Southampton SO16 5ST, UK; hae1@soton.ac.uk

TC and RM-M contributed equally.

Received 26 October 2018
Revised 31 January 2019
Accepted 22 February 2019



© Author(s) (or their employer(s)) 2019. Re-use permitted under CC BY-NC. No commercial re-use. See rights and permissions. Published by BMJ.

To cite: Everitt HA, Landau S, O'Reilly G, et al. *Gut* Epub ahead of print: [please include Day Month Year]. doi:10.1136/gutjnl-2018-317805

ABSTRACT

Objective To evaluate the clinical effectiveness of two modes of cognitive–behavioural therapy (CBT) for IBS compared with treatment as usual (TAU) in refractory IBS.

Design A three-arm randomised controlled trial assessing telephone-delivered CBT (TCBT), web-based CBT (WCBT) with minimal therapist support, and TAU. Blinding participants and therapists was not possible. Chief investigator, assessors and statisticians were blinded. Participants were adults with refractory IBS (clinically significant symptoms for ≥ 12 months despite first-line therapies), recruited by letter and opportunistically from 74 general practices and three gastroenterology centres in London and South of England between May 2014 to March 2016. Co-primary outcomes were IBS Symptom Severity Score (IBS-SSS) and Work and Social Adjustment Scale (WSAS) at 12 months.

Results 558/1452 (38.4%) patients screened for eligibility were randomised: 76% female: 91% white: mean age 43 years. (391/558) 70.1% completed 12 months of follow-up. Primary outcomes: Compared with TAU (IBS-SSS 205.6 at 12 months), IBS-SSS was 61.6 (95% CI 33.8 to 89.5) points lower ($p < 0.001$) in TCBT and 35.2 (95% CI 12.6 to 57.8) points lower ($p = 0.002$) in WCBT at 12 months. Compared with TAU (WSAS score 10.8 at 12 months) WSAS was 3.5 (95% CI 1.9 to 5.1) points lower ($p < 0.001$) in TCBT and 3.0 (95% CI 1.3 to 4.6) points lower ($p = 0.001$) in WCBT. All secondary outcomes showed significantly greater improvement ($p \leq 0.002$) in CBT arms compared with TAU. There were no serious adverse reactions to treatment.

Conclusion Both CBT interventions were superior to TAU up to 12 months of follow-up.

Trial registration number ISRCTN44427879.

INTRODUCTION

IBS is a common GI disorder affecting 10%–20% of the population worldwide and incurring significant health costs.^{1,2} Abdominal pain, bloating and altered bowel habit affect quality of life, social functioning and time off work.³ Treatment commonly relies on a positive diagnosis, reassurance, lifestyle advice

Significance of this study

What is already known on this subject?

- IBS is common and many people with IBS have ongoing symptoms that significantly affect quality of life.
- Face-to-face cognitive–behavioural therapy (CBT) has been shown to be helpful for IBS and is recommended in National Institute for Health and Care Excellence guidelines but there is limited evidence for telephone and web-based CBT and uncertainty regarding participant's adherence to CBT and its longer term effectiveness.
- Currently there is poor availability of CBT for people with IBS.

What are the new findings?

- This is the first large randomised controlled trial in primary and secondary care with long-term follow-up to compare low-intensity web-based CBT for IBS and higher intensity telephone-delivered CBT for IBS with treatment as usual.
- Both the telephone-delivered and web-delivered CBT for IBS showed large clinical and statistically significant improvements in IBS symptoms and impact on life and mood which were maintained at 12 months.
- Good adherence to treatment and sustained improvements in IBS at 12 months can be achieved with telephone and web-based CBT for IBS.

including diet and drug therapies.^{3,4} However, many patients suffer ongoing symptoms. Psychological therapies and particularly face-to-face cognitive–behavioural therapy (CBT) can reduce symptom scores and improve quality of life by targeting unhelpful beliefs and coping behaviours^{5–8} but questions remain over optimum modes of delivery, adherence to therapy and longer term outcomes. The National Institute for Health and Care Excellence (NICE) guidance³ recommends CBT for

Significance of this study

How might it impact on clinical practice in the foreseeable future?

- ▶ Currently clinicians have few options to offer people with refractory IBS, particularly in primary care. This study shows that IBS-specific CBT has the potential to provide significant improvement in IBS symptoms, within a National Health Service (NHS) setting (NHS therapists delivered the interventions).
- ▶ All therapy was offered remotely so could be made nationally available from specialist therapy centres. In addition, therapists who currently work in the Improving Access to Psychological Therapy services (available throughout England) have suitable skills and are well placed to provide CBT for IBS.
- ▶ Potential treatment pathways could be a 'matched' approach where people with IBS are initially offered the most appropriate type of CBT based on initial assessments or a 'stepped care' care approach where all patients are offered lower intensity web-based CBT and further therapist input is considered for those with particularly troublesome symptoms.

patients with refractory IBS symptoms (ie, ongoing symptoms after 12 months despite being offered appropriate medications and lifestyle advice).

Even assuming there were no questions about the longer term effectiveness of CBT, there is very limited access for patients with refractory IBS to traditional intensive face-to-face CBT. Within resource-constrained health services, telephone-delivered CBT (TCBT) and web-based CBT (WCBT) are likely to provide an important way of improving access and have the advantage of access at a time and place convenient to the participant, at a pace that suits individual's circumstances, without additional travel time and costs.

Previous trials show provisional evidence for WCBT (with some therapist support) in IBS.^{9–13} However, to date there are no large effectiveness randomised controlled trials (RCT) of WCBT for IBS compared with treatment as usual (TAU).

We previously evaluated the efficacy of manualised CBT for IBS in primary care delivered by nurses¹⁴ and further developed it into a self-help manual with guided psychologist support.¹⁵ Subsequently, we developed a tailored, interactive web-based version of the manual called Regul8, which was explored in the Managing Irritable Bowel Syndrome (MIBS) feasibility trial.⁹

The aim of the Assessing Cognitive-behavioural Therapy in Irritable Bowel syndrome (ACTIB) trial was to compare clinical and cost-effectiveness of therapist TCBT and WCBT (Regul8) with minimal therapist support with TAU alone¹⁶ at reducing IBS symptoms and impact.

METHODS**Study design and participants**

ACTIB was a parallel three-group, multicentre randomised trial with outcomes assessed at 3, 6 and 12 months after randomisation for patients with refractory IBS. Primary endpoint was 12 months. We recruited UK National Health Service (NHS) patients from 74 primary care general practice (GP) surgeries in Southern England and London and three secondary care gastroenterology outpatient clinics in Southampton and London, May 2014 to March 2016. Twelve-month data collection completed in May 2017.

Trial protocol is published on BMJOpen.bmj.com.¹⁶

Participants were eligible if they fulfilled criteria for refractory IBS at screening, defined as: fulfilling ROME III criteria for IBS¹⁷; reported ongoing clinically significant symptoms on IBS Symptom Severity Score (IBS-SSS),¹⁸ that is, ≥ 75 ; had been offered first-line therapies (eg, antispasmodics, antidepressants or fibre-based medications); and had IBS symptoms ≥ 12 months. Due to the increased risk of bowel cancer, potential participants aged >60 years were only included if they had hospital consultant review ≤ 2 years to confirm symptoms were IBS related and exclude serious bowel conditions.

Medical exclusion criteria: unexplained rectal bleeding or weight loss, IBD, coeliac disease, peptic ulcer disease, colorectal carcinoma. Other exclusions: patients <18 years, unable to participate in CBT due to speech or language difficulties, no access to internet computer, received CBT in the last 2 years, previous access to Regul8 during MIBS trial, currently participating in another IBS intervention trial.

Primary care patients were identified by searching GPs' lists for those with an IBS diagnosis and opportunistic recruitment of patients with IBS. An invitation letter was sent including a patient information sheet and a reply slip. Most secondary care recruitment was opportunistic during gastroenterology clinics. Adverts were also placed in GP and gastroenterology clinics and on NHS websites.

The trial team undertook initial telephone eligibility screening; any suggestion of serious pathology, such as unexplained weight loss, triggered GP referral for further assessment. Online consent preceded screening blood tests: full blood count, C-reactive protein and tissue transglutaminase (as per NICE guidelines³). If blood tests were within normal limits, participants were able to take part.

Randomisation and masking

After completing baseline questionnaires, participants were randomised to one of the three trial arms. Randomisation was at the level of the individual, stratified by recruitment centre, with randomly varying block sizes to ensure approximately equal group sizes. Randomisation was implemented via an independent web-based randomisation service at the UK-CRC registered King's Clinical Trials Unit.

As with any therapy trial, participants, therapists and research assistants assisting with therapy arrangements could not be masked to treatment allocation. However, trial principal investigators and statisticians undertaking outcome analysis were masked. Outcomes were completed by participants independently of the study team.

Description of CBT interventions and TAU

Two interventions were assessed: therapist TCBT and a low-intensity WCBT—an update of the Regul8 programme developed in MIBS⁹ including eight online sessions, with some therapist support.

All arms received TAU, control being TAU alone.

The CBT content of the treatment arms was similar, based on an empirical cognitive-behavioural model of IBS,¹⁹ consisting of education, behavioural and cognitive techniques, aimed at improving bowel habits, developing stable healthy eating patterns, addressing unhelpful thoughts, managing stress, reducing symptom focusing and preventing relapse.

Treatments were standardised by provision of training, supervision and manuals for therapists. All therapists were able to be

allocated to participants from all recruitment centres and either therapy arm.

Participants randomised to TCBT arm received a detailed self-help manual including homework tasks and had six 1-hour telephone sessions with a CBT therapist at weeks 1, 2, 3, 5, 7 and 9. They also received two 1-hour booster sessions at 4 and 8 months (total 8 hours of therapist support).

WCBT participants received online access to Regul8 and three 30 min telephone therapy calls at weeks 1, 3 and 5, and two 30 min booster sessions at 4 and 8 months (2.5 hours of therapist support).

TAU was a continuation of current medications and usual GP or consultant follow-up with no psychological therapy. All GP and secondary care sites received NICE guidance for IBS³ and a desk-side reminder highlighting protocol guidance and inclusion criteria. All participants received a standard information sheet on Lifestyle and Diet in IBS based on NICE guidance.³ Information was collected on any changes in IBS treatments/management and numbers of GP and consultant consultations were recorded for all trial arms. TAU alone participants were given access to WCBT website (but no therapy support) at the end of the 12-month follow-up period.

Therapy procedures

Thirteen therapists trained in cognitive behavioural psychotherapy (10 [77%] female, mean age 42 years [range 34–52]) based at South London and Maudsley NHS Trust provided telephone CBT sessions for both therapy arms. Six therapists were clinical psychologists (46%) and seven (54%) were cognitive behavioural psychotherapists with a median of 7 years (range 4–24) experience. All sessions were audio recorded for supervision and treatment fidelity purposes. Therapists received a therapist manual, 2 days' training and supervision. TC and RMM listened to one therapy tape per therapist per supervision session which were conducted in 90 min fortnightly group sessions in the first half of the trial, then monthly.

Fidelity was rated by two independent clinical psychologists using a fidelity measure specifically adapted for this trial.²⁰ A random sample of 22/90 WCBT second sessions (24.4%) and 23/103 (23.3%) TCBT third sessions were rated. Of 45 randomly selected recordings, nine were double rated (20%) and discussed between raters to ensure consistency. Percentage agreement in scale items was 83.95%–99.31%. Double ratings showed adequate inter-rater reliability (ie, weighted kappa range 0.50–0.97) for all items except one, which had a weighted kappa of 0.11.

Outcomes

Assessments were undertaken at baseline, and at 3, 6 and 12 months after randomisation and completed online by participants (or a paper copy was posted or telephone follow-up undertaken as described in the protocol).¹⁶

Primary outcomes

Two coprimary outcomes at 12 months after randomisation:

IBS-SSS¹⁸ measures severity and duration of abdominal pain, abdominal distension/tightness, bowel habit and quality of life (score 0–500). IBS-SSS is widely used in IBS studies and a 50-point within-participant change from baseline regarded as clinically significant.¹⁸ We used a 35-point between-group change as our minimal clinically important difference (MCID) assuming some improvement in TAU arm (15 points placebo response) as in the MIBS trial.⁹

The WSAS measures the effect of IBS on ability to work and manage at home, participate in social and private leisure activities and maintain relationships. WSAS is sensitive to change in IBS^{14 15} and has five domains scored 0 (not affected) to 8 (severely affected), with a total possible score of 40.¹⁴

Secondary outcomes

IBS-SSS and WSAS at 3 and 6 months after randomisation, and mood, symptom relief and ability to cope with symptoms at 3, 6 and 12 months.

Subject's Global Assessment of Relief (SGA)²¹ assesses IBS symptoms relief on a scale of 1–5, from 'completely relieved' to 'worse'. Scores were dichotomised; 1–3 considered responders and 4–5 non-responders.²¹

Patient Enablement Questionnaire (PEQ)²² assesses participants' ability to cope with their illness and life after treatment, scored 0–12, higher scores indicating improvement.

SGA and PEQ were not measured at baseline.

Mood was measured by the total distress score²³ of the Hospital Anxiety and Depression Scale (HADS).²⁴

Adherence to therapy was defined as the number of phone or web sessions undertaken: WCBT completing ≥ 4 website sessions and one or more telephone support calls; TCBT completing ≥ 4 of the initial telephone CBT sessions.

Participants self-reported adverse events (AE) in follow-up questionnaires. Clinicians and therapists reported serious AEs on a standard form.

Sample size

We powered to detect our MCID of a 35-point difference between therapy groups and TAU on IBS-SSS at 12 months. Assuming a within-group IBS-SSS SD of 76 (MIBS pilot study⁹), this equates to an effect size of 0.46. To achieve 90% power, at 2.5% significance level (adjusting for two primary outcomes), required 119 participants per group. This sample size was increased by an inflation factor of 1.32, to take account of therapist effects (assuming an intraclass correlation of 0.02²⁵ and a workload of 17 participants per therapist), decreased by a deflation factor of 0.84 assuming that baseline values are predictive of post-treatment values (correlation 0.4) and further inflated (factor 1.25) for attrition <20%. The final sample size was 165 patients per group, or 495 patients in total. For WSAS, this was sufficient to detect a difference of 3.7 points or larger, which is consistent with previous CBT trials.¹⁵

Statistical analysis

An intention-to-treat (ITT) approach was used. For each outcome and assessment time point (3, 6 or 12 months) we estimated the effect of treatment (TCBT or WCBT) compared with TAU to assess treatment effectiveness. Significance testing was performed at Bonferroni adjusted significance level $\alpha=0.025$ to allow for two primary outcomes. Modelling of continuous variables relied on normal assumptions for error terms and treatment effects were quantified by trial arm differences (and standardised differences). To facilitate modelling, the PEQ measure, which displayed considerable zero inflation, was reclassified as a binary variable, a score of ≥ 6 considered a 'responder'. Binary outcome variables were analysed within a logistic regression framework and treatment effects quantified by ORs.

Formal trial arm comparisons were carried out by multiple imputation (MI) using the flexible Multivariate Imputation by Chained Equations (MICE) approach.²⁶ Necessary as non-adherence with treatment was found predictive of missing primary

outcomes at 12 months in CBT arms. MI can provide estimates of trial arm differences valid under such a ‘missing at random (MAR)’ process²⁷ (details in online supplementary appendix 1). We also empirically assessed whether baseline variables were predictive of missing data using logistic regression modelling of missingness at 12 months at a liberal 20% test level (see online supplementary appendix 2). More severe baseline IBS-SSS and index of multiple deprivation (IMD) predicted missingness so

we included these variables in the imputation to allow for a realistic MAR process.

Separate analyses were carried out for each outcome variable and time point. MICE was used with regression or logistic regression imputation models for continuous and binary variables, respectively. Predictive mean matching (10 nearest neighbours) ensured imputed IBS-SSS, WSAS and HADS values lay within the observed data range. One hundred imputations were

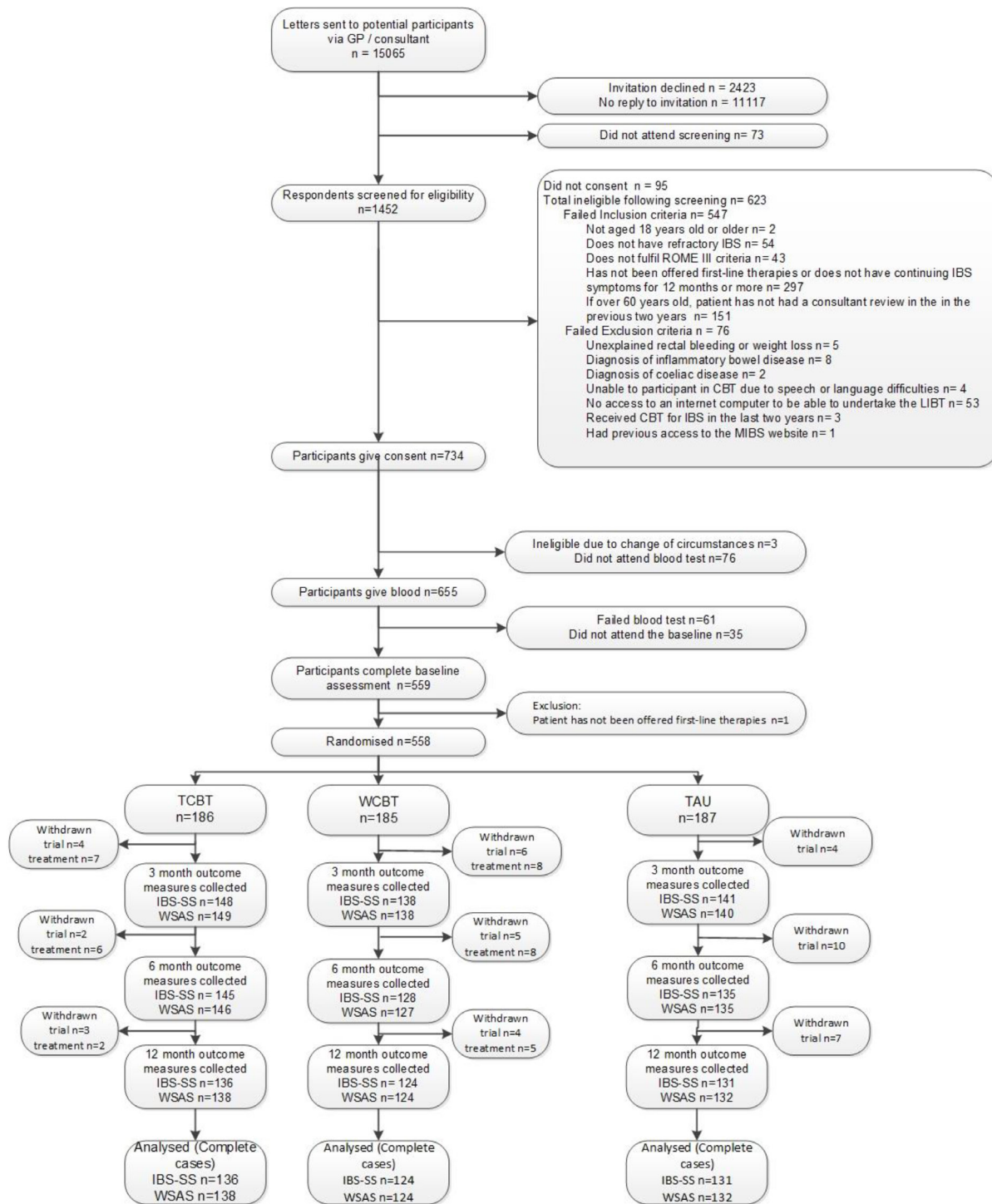


Figure 1 Consolidated Standards of Reporting Trials (CONSORT) diagram for Assessing Cognitive-behavioural Therapy in Irritable Bowel syndrome (ACTIB) trial. CBT, cognitive-behavioural therapy; GP, general practice; IBS-SS, IBS Symptom Severity Score; MIBS, Managing Irritable Bowel Syndrome; TAU, treatment as usual; TCBT, telephone-delivered CBT; WCBT, web-based CBT; WSAS, Work and Social Adjustment Scale.

Table 1 Demographic and clinical characteristics of the study sample at baseline (n=558)

		TCBT n=186	WCBT n=185	TAU n=187	All n=558
Age (years)	Mean (SD)	43.4 (12.5)	43.8 (13.6)	42.0 (13.5)	43.1 (13.2)
Gender	Female (%)	139 (74.7)	145 (78.4)	139 (74.3)	423 (75.8)
Ethnicity (%)	White	162 (87.1)	171 (92.4)	174 (93.0)	507 (90.9)
Deprivation score ³⁴	Mean (SD)	16.7 (12.0)	17.3 (12.3)	17.2 (11.8)	17.1 (12.0)
Seen a GI consultant for IBS	Count (%)	20 (10.7)	15 (8.1)	22 (11.8)	57 (10.2)
Years of symptoms before diagnosis	n/Median	186/3.3	185/3.0	187/3.0	558/3.0
	Range	0.0–47.0	0.0–40.0	0.0–40.0	0.0–47.0
Duration of IBS (years)	n/Median	185/6.5	185/8.6	187/6.3	557/7.4
	Range	1.0–65.0	0.7–45.4	0.3–49.9	0.3–64.6
HADS anxiety score	Mean (SD)	10.6 (4.3)	11.1 (4.3)	10.5 (4.0)	10.7 (4.2)
	Case*/n (%)	89/186 (47.9)	98/185 (53.0)	96/187 (51.3)	283/558 (50.7)
HADS depression score	Mean (SD)	5.5 (3.6)	5.9 (3.8)	5.6 (3.5)	5.7 (3.7)
	Case*/n (%)	47/186 (25.3)	60/185 (32.4)	50/187 (26.7)	157/558 (28.1)
IBS subtype					
IBS diarrhoea	n (%)	60 (32.3)	60 (32.4)	58 (31.0)	178 (31.9)
IBS constipation	n (%)	26 (14.0)	23 (12.4)	27 (14.5)	76 (13.6)
IBS alternating†	n (%)	93 (50.3)	98 (53.0)	96 (51.3)	287 (51.5)
IBS unclassified	n (%)	6 (3.2)	4 (2.2)	6 (3.2)	16 (2.9)

*HADS case of anxiety defined as scoring $\geq 10/21$ and depression as scoring $\geq 7/21$ on subscale.

†IBS-A or alternating is also referred to as IBS-M or mixed.

HADS, Hospital Anxiety and Depression Scale; IMD, index of multiple deprivation; TAU, treatment as usual; TCBT, telephone-delivered CBT; WCBT, web-based CBT.

used throughout. MI analysis models included the respective outcome variable as the dependent variable, and trial arm (two dummy variables indicating the TCBT and WCBT arms), baseline values of outcome and randomisation stratifier (dummy variables for four levels) as explanatory variables. Since both TCBT and WCBT involved therapists delivering the intervention possible therapist effects were investigated (see online supplementary appendix 3 for procedures to select the model for therapist effects). We detected therapist effects in TCBT arm for IBS-SSS, SGA responders and PEQ responders at 12 months and

allowed for therapist-varying random intercepts in TCBT arm for these variables. For binary outcomes affected by therapist effects estimated ORs were conditioned on the therapist. The OR was marginalised across therapists within a stratifier level to ensure that all quoted ORs estimate the same effect size measure (OR of treatment within a centre). For each outcome variable, the MI imputation model included (1) all variables of the analysis model, (2) measures of outcome variable at other assessment time points including baseline, and (3) known predictors of missingness (binary adherence variables for each of TCBT and

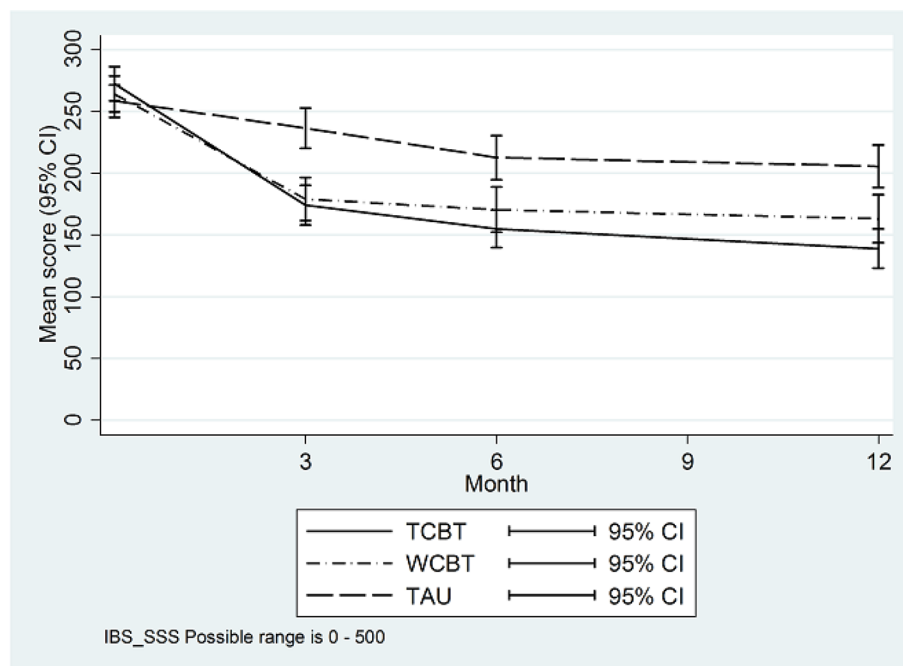


Figure 2 IBS-SSS means by trial arm. IBS-SSS, IBS Symptom Severity Score; TAU, treatment as usual; TCBT, telephone-delivered CBT; WCBT, web-based CBT.

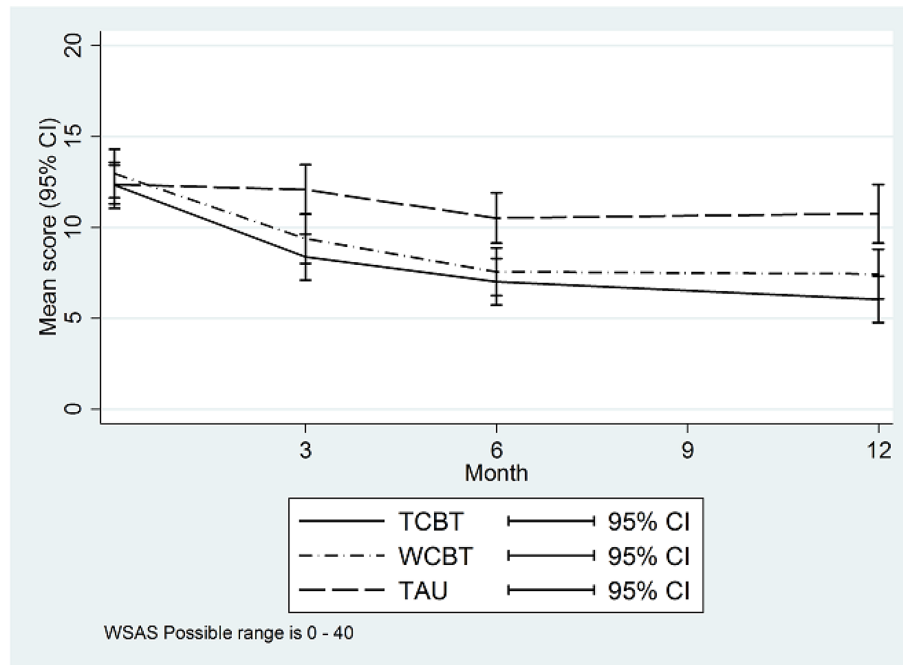


Figure 3 WSAS means by trial arm. TAU, treatment as usual; TCBT, telephone-delivered CBT; WCBT, web-based CBT; WSAS, Work and Social Adjustment Scale.

WCBT, IBS-SSS and IMD). For analysis models that contained (random) therapist effects, (4) fixed effects for therapists in TCBT arm were also added. Relevant model assumptions were checked, including normality and homogeneity assumptions, and found satisfactory.

Results of complete case analyses are provided in online supplementary appendix 4. Four sensitivity analyses were conducted. Their purpose and technical details are provided in online supplementary appendix 5. All analyses were carried out in Stata version 14.2.

Patient and public involvement

Patient and public involvement (PPI) representatives participated in the trial management group and trial steering committee and were included in all phases of trial design, including planning recruitment and recruitment materials. They had participated in MIBS⁹ and thus were able to provide first-hand insight into intervention burden and time required to participate in the research. CBT interventions were developed and updated with PPI input.^{9,28}

Trial results will be emailed to all participants and published on the trial website.

RESULTS

Five hundred and fifty-eight (38.4%) of 1452 patients screened for eligibility were recruited, May 2014 to March 2016: 186 were randomised to TCBT, 185 to WCBT and 187 to TAU.

Figure 1, Consolidated Standards of Reporting Trials, describes participants' journey. The most common ineligibility reasons were: failure to have refractory IBS or not being offered first-line therapies.

Over-recruitment relative to the original sample size calculation of 495 was undertaken (with ethical approval, within original recruitment time frame) to compensate for a lower follow-up rate than originally estimated ($\approx 80\%$).⁹ Follow-up rates were: 76.5% (427/558) at 3 months, 72.9% (407/558) at 6 months and 70.3% (392/558) at 12 months. One-year follow-up was completed in April 2017.

Adherence

For TCBT arm, 84.4% of participants completed at least four phone calls. For WCBT arm, 88.1% of participants completed at least one phone call, and 69.2% completed four web sessions.

Fidelity

Mean fidelity ratings were high and similar for TCBT and WCBT. Therapeutic alliance: mean score 93.2 (range 71.4–100.0) (SD 10.4) for TCBT and 94.4 (range 57.1–100.0) (SD 10.3) for WCBT. CBT Skills mean score 78.5 (range 46.4–92.9) (SD 13.1) for TCBT and 82.8 (range 54.3–97.1) (SD 12.1) for WCBT. Therapy adherence mean score 90.1 (range 71.4–100.0) (SD 10.0) for TCBT and 89.4 (range 42.9–100.0) (SD 15.1) for WCBT.

Baseline characteristics

Table 1 shows participants' baseline characteristics. 75.8% were female, mean age was 43.1 years (SD=13.2) and median duration since diagnosis was 7.4 years (range 0.3–64.6). 10.2% had seen a GI consultant regarding their IBS. Mean IBS-SSS was 265 (SD=95.5) indicating moderately severe IBS and baseline mean WSAS score was 12.5 suggesting significant, but not severe functional impairment. Mean baseline HADS anxiety score was 10.7 (SD=4.2) with 50.7% (283/588) scoring $\geq 10/21$ and mean HADS depression score was 5.7 (SD=3.7) with 28.2% (157/558) scoring $\geq 7/21$.²⁹ All baseline characteristics were well balanced between groups.

Primary outcome measures

Figures 2 and 3 illustrate primary outcome measure change over time by trial arm. Table 2 summarises primary and secondary outcomes and table 3 provides formal trial arm comparisons. Compared with TAU (IBS-SSS of 205.6 at 12 months), IBS-SSS was 61.6 (95% CI 33.8 to 89.5) points lower ($p < 0.001$) in TCBT and 35.2 (95% CI 12.6 to 57.8) points lower ($p = 0.002$) in WCBT at 12 months. Ninety-nine of 136 (72.8%) participants had a clinically significant change in IBS-SSS (≥ 50 points) from

Table 2 Descriptive summaries* for primary and secondary outcomes

	TCBT n=186			WCBT n=185			TAU n=187			All n=558		
	Mean	SD	n	Mean	SD	n	Mean	SD	n	Mean	SD	n
IBS-SSS												
Baseline	272.3	95.5	186	264.2	99.3	185	258.5	91.6	187	265.0	95.5	558
3 months	174.0	98.6	148	179.1	104.2	138	236.5	97.1	141	196.3	103.7	427
6 months	154.9	92.0	145	170.3	104.9	128	212.7	104.8	135	178.8	103.2	408
12 months	139.0	94.8	136	163.0	108.8	124	205.6	100.5	131	168.9	104.8	391
WSAS												
Baseline	12.3	8.8	186	13.0	9.3	185	12.4	7.4	187	12.5	8.5	558
3 months	8.4	7.8	149	9.4	8.2	138	12.1	8.2	140	9.9	8.2	427
6 months	7.0	7.8	146	7.6	7.5	127	10.5	8.1	135	8.3	7.9	408
12 months	6.0	7.5	138	7.4	7.7	124	10.8	9.3	132	8.1	8.5	394
HADS distress												
Baseline	16.1	6.9	186	17.0	7.3	185	16.0	6.4	187	16.4	6.9	558
3 months	13.5	6.6	147	13.4	6.9	136	15.6	7.4	139	14.1	7.0	422
6 months	12.4	6.7	123	12.7	6.9	115	15.2	7.3	120	13.4	7.1	358
12 months	12.2	6.5	120	12.7	7.4	117	15.0	7.2	113	13.3	7.1	350
PEQ responder†												
3 months	55 (37.2)	93 (62.8)	148	71 (51.4)	67 (48.6)	138	128 (90.8)	13 (9.2)	141	254 (45.5)	173 (31.0)	427
6 months	35 (24.0)	111 (76.0)	146	57 (44.9)	70 (55.1)	127	113 (83.1)	23 (16.9)	136	205 (50.1)	204 (49.9)	409
12 months	30 (21.7)	108 (78.3)	138	56 (45.2)	68 (54.8)	124	101 (76.5)	31 (23.5)	132	187 (47.5)	207 (52.5)	394
SGA responders‡												
3 months	36 (24.2)	113 (75.8)	149	44 (31.9)	94 (68.1)	138	111 (79.3)	29 (20.7)	140	191 (44.7)	236 (55.3)	427
6 months	28 (19.2)	118 (80.8)	146	32 (25.2)	95 (74.8)	127	95 (69.9)	41 (30.1)	136	155 (37.9)	254 (62.1)	409
12 months	21 (15.2)	117 (84.8)	138	31 (25.0)	93 (75.0)	124	77 (58.3)	55 (41.7)	132	129 (32.7)	265 (67.3)	394

* Summaries were derived from the raw data.

† PEQ: responders are defined as those getting a score of 6 or more. PEQ is not recorded at baseline.

‡ SGA: responders are defined as those getting a score between 1 and 3. SGA is not recorded at baseline.

HADS: Hospital Anxiety and Depression Scale; IBS-SSS, IBS Symptom Severity Score; PEQ, Patient Enablement Questionnaire; SGA, Subject's Global Assessment of Relief, TAU, treatment as usual; TCBT, telephone-delivered CBT; WCBT, web-based CBT; WSAS, Work and Social Adjustment Scale.

Table 3 Formal comparisons between therapy arms and TAU*

	TCBT versus TAU			WCBT versus TAU				
	Estimated difference	95% CI	Test (df) P value	Standardised difference†	Estimated difference	95% CI	Test (df) P value	Standardised difference†
IBS-SSS								
3 months	-69.2	-88.7 to -49.7	t=-7.0 (367) <0.001	0.73	-53.0	-74.9 to -31.1	t=-4.7 (237) <0.001	0.56
6 months	-58.3	-80.3 to -36.3	t=-5.2 (295) <0.001	0.61	-35.7	-58.5 to -12.9	t=-3.1 (257) 0.002	0.37
12 months‡	-61.6	-89.5 to -33.8	t=-4.3 (1581) <0.001	0.65	-35.2	-57.8 to -12.6	t=-3.1 (275) 0.002	0.37
WSAS								
3 months	-3.4	-4.8 to -2.0	t=-4.8 (355) <0.001	0.40	-3.0	-4.4 to -1.5	t=-3.9 (288) <0.001	0.35
6 months	-2.7	-4.2 to -1.2	t=-3.6 (280) <0.001	0.32	-2.5	-4.0 to -1.0	t=-3.3 (257) 0.001	0.30
12 months	-3.5	-5.1 to -1.9	t=-4.2 (268) <0.001	0.41	-3.0	-4.6 to -1.3	t=-3.5 (258) 0.001	0.35
HADS								
3 months	-2.1	-3.2 to -0.9	t=-3.6 (306) <0.001	0.30	-2.5	-3.7 to -1.3	t=-4.0 (261) <0.001	0.36
6 months	-2.2	-3.5 to -0.8	t=-3.2 (227) 0.002	0.32	-2.9	-4.2 to -1.6	t=-4.2 (230) <0.001	0.42
12 months	-2.8	-4.1 to -1.5	t=-4.3 (248) <0.001	0.41	-2.3	-3.7 to -1.0	t=-3.4 (217) 0.001	0.34
	Estimated OR	95% CI	Test (df) P value		Estimated OR	95% CI	Test (df) P value	
PEQ responders								
3 months	13.3	6.9 to 25.8	t=7.7 (1347) <0.001		6.6	3.3 to 13.2	t=5.4 (918) <0.001	
6 months	11.6	6.4 to 20.9	t=8.1 (1134) <0.001		4.8	2.7 to 8.7	t=5.2 (889) <0.001	
12 months‡	9.3§	4.5 to 19.3	t=6.0 (2369) <0.001		3.5	2.0 to 5.9	t=4.5 (1079) <0.001	
SGA responders								
3 months	10.2	5.8 to 18.1	t=8.1 (1289) <0.001		6.4	3.6 to 11.3	t=6.3 (824) <0.001	
6 months	6.2	3.7 to 10.4	t=6.9 (1637) <0.001		5.0	2.8 to 8.8	t=5.6 (630) <0.001	
12 months‡	6.1¶	2.5 to 15.0	t=3.9 (2957) <0.001		3.6	2.0 to 6.3	t=4.4 (600) <0.001	

*All inferences were derived by multiple imputation as described in the Methods section. Each model used 100 imputations.

†Differences were standardised by dividing by baseline SD for IBS-SS (95.5), WSAS (8.8) and HADS (6.9), respectively.

‡The 12-month model included therapist effects in the TCBT arm.

§The reported TCBT effect is a conditional effect (conditioned on therapist). The corresponding marginal ORs within site are 9.0 (Southampton GP Practices), 9.2 (Southampton Secondary Care), 9.3 (London GP Practices) and 9.3 (London Secondary Care).

¶The reported TCBT effect is a conditional effect (conditioned on therapist). The corresponding marginal ORs within site are 5.8 (Southampton GP Practices), 6.0 (Southampton Secondary Care), 5.9 (London GP Practices) and 5.9 (London Secondary Care).

HADS, Hospital Anxiety and Depression Scale; IBS-SSS, IBS Symptom Severity Score; PEQ, Patient Enablement Questionnaire; SGA, Subject's Global Assessment of Relief; TAU, treatment as usual; TCBT, telephone-delivered CBT; WCBT, web-based CBT; WSAS, Work and Social Adjustment Scale.

baseline to 12 months in TCBT compared with 82/124 (66.1%) in WCBT and 58/131 (44.3%) in TAU.

WSAS score in TAU was 10.8 at 12 months and 3.5 (95% CI 1.9 to 5.1) points lower ($p<0.001$) in TCBT and 3.0 (95% CI 1.3 to 4.6) points lower ($p=0.001$) in WCBT.

Secondary outcome measures

Secondary outcome measures also showed significant improvement in both therapy arms compared with TAU at all assessment time points (table 3). For subjects' global improvement of symptoms (SGA) 41.7% were responders in TAU. Odds of being an SGA responder were raised by a factor of 6.1 for TCBT (95% CI 2.5 to 15.0; $p<0.001$) and by a factor of 3.6 for TCBT (95% CI

2.0 to 6.3; $p<0.001$). For patient enablement (PEQ) 23.5% were responders in TAU. Odds of being a PEQ responder were raised by a factor of 9.3 for TCBT (95% CI 4.5 to 19.3; $p<0.001$) and by a factor of 3.5 for WCBT (95% CI 2.0 to 5.9; $p<0.001$). For HADS at 12 months compared with TAU (mean HADS score 15.0 [SD 7.2]), scores were an estimated 2.8 (95% CI 1.5 to 4.1) points lower ($p<0.001$) in the TCBT and 2.3 (95% CI 1.0 to 3.7) points lower ($p=0.001$) in the WCBT at 12 months.

Sensitivity analyses demonstrated that: findings were robust regarding timing of refractory IBS eligibility assessment or timing of outcome recording; using a different threshold to define PEQ responders did not affect substantive conclusions;

Complier Average Causal Effect, using predefined adherence criteria, revealed that efficacies for those who comply with CBT interventions were higher than the values suggested by ITT analyses (online supplementary appendix 5).

There were very few serious and no intervention-related AEs; 77 were recorded in TCBT, 61 in WCBT and 55 in TAU. These were varied and split between body system codes. Thirty-five were recorded as GI AE (14 in TCBT, 10 in WCBT and 11 in TAU) and 45 were psychologically recorded as AE (18 in TCBT, 17 in WCBT and 10 in TAU). One would expect to see increased rates of reported AE in CBT arms, and particularly in TCBT as therapists completed AE forms for any AE mentioned during therapy sessions.

DISCUSSION

Compared with TAU, both TCBT and WCBT intervention arms showed clinically important and/or statistically significant improvements in all primary and secondary outcomes at all time points sustained at 12 months. These results indicate that both TCBT and WCBT are effective treatments for refractory moderately severe IBS compared with TAU.

Trial strengths include a well-powered rigorously conducted RCT with broad inclusion and long-term follow-up. The IBS-specific CBT was based on an explicit theoretical model¹⁹ which informed detailed patient and therapy manuals and the WCBT (Regul8). Therapists were experienced in delivering CBT and trained and supervised to deliver IBS-specific CBT. Trial interventions had good treatment fidelity and were delivered by NHS therapists in an NHS setting.

In terms of limitations, trial participants may not be representative of all patients with IBS. To address this, we used broad inclusive recruitment methods from primary and secondary care. However, people unwilling to consider undertaking CBT for IBS are unlikely to have participated. Encouragingly, age and gender were very similar between those invited and those randomised suggesting, on basic demographics, the sample was broadly representative though ethnic diversity was limited. Follow-up was below the 80% in the original sample size calculation despite extensive efforts, with rates of 76.5% and 70.3% at 3 and 12 months. To mitigate this and maintain power, more participants were recruited (558 compared with 495). Additionally, an ITT analysis with MI ensured valid results despite missing data.

Previous research has shown face-to-face and TCBT to be beneficial for IBS^{6 14 15} particularly immediately after therapy. However, a Cochrane review⁶ highlighted uncertainty in longer term. Other large published trials of CBT for IBS report 6-month follow-up.^{13 30} ACTIB found large beneficial results maintained at 12 months, possibly related to the IBS-specific CBT, therapist training, comprehensive participant CBT manual and booster sessions. Significant results were found despite large positive improvements in the TAU group.

A recently published three-arm RCT (n=436) compared face-to-face CBT for IBS with home-based CBT (minimal contact cognitive behavioural therapy (MC-CBT)) using self-study materials, and IBS education alone (EDU).³⁰ They reported improvement at 2 weeks in both CBT arms compared with EDU, and on gastroenterologist (but not patient) ratings at 6 months on the clinical global impressions improvement scale, suggesting promise for low-intensity CBT for IBS. However, they only recruited participants from tertiary centres, reported 6-month follow-up and failed to show significantly greater improvements for CBT on IBS-SSS at any time point. ACTIB recruited more broadly, found large improvements in IBS-SSS and global symptoms (SGA) at all time points with 2.5 hours of telephone therapy

for WCBT compared with 4 hours of face-to-face therapy in MC-CBT.

Limited adherence is a concern with CBT for IBS with face-to-face⁶ and web-based therapy.^{13 31} The Kennedy trial¹⁴ which assessed nurse-delivered CBT found fewer than half participants completed therapy, 41% declining or dropping out due to time issues such as work and child care commitments. ACTIB had good adherence (84% TCBT, 70% WCBT), possibly due to telephone rather than face-to-face delivered therapy and flexibility regarding appointment times. Lower adherence rates with WCBT are consistent with research in other conditions.³² Although adherence was lower in WCBT than TCBT, the primary outcome measure changes were clinically significant and sustained at 12 months. Effects were even larger when only adherent patients were considered.

Most other minimal contact IBS interventions have relied on self-referral and thus have likely recruitment biases^{10 13} whereas all patients with IBS in participating centres were invited to ACTIB, suggesting Regul8 with minimal contact is largely acceptable.

The ACTIB findings build on results from other trials^{9–11 13 33} showing promise for WCBT for IBS, with significant improvements in IBS symptoms maintained at 12 months with minimal therapist input (2.5 hours). However, these were skilled CBT therapists, so it may not apply to low-intensity interventions with non-CBT-trained health professionals.

Currently, clinicians have few options to offer people with refractory IBS, particularly in primary care. This study shows IBS-specific TCBT and WCBT can provide significant improvement in IBS symptoms, within an NHS setting (NHS therapists delivered the interventions). All therapy was offered remotely so could be made nationally available from specialist therapy centres. Therapists who currently work in the 'Improving access to psychological therapy' services (available throughout England) have suitable skills and are well placed to provide CBT for IBS. Potential treatment pathways include a 'matched' approach where people are offered TCBT or WCBT based on initial assessments or a 'stepped care' care approach where all patients are offered lower intensity WCBT and therapist input is considered as required.

We are undertaking a process evaluation to explore which form of CBT is most appropriate for which patients with IBS. Future publications are planned on the cost-effectiveness, a nested qualitative study of participant's perceptions, investigation of moderators and mediators of CBT effects and longer term follow-up. Further research is needed to assess whether TCBT and WCBT can be widely disseminated in non-trial clinical settings.

CONCLUSION

This large rigorous trial of CBT for IBS found that both CBT arms were superior to TAU at 12 months. This trial reinforces NICE guidance,³ which currently relies on a limited evidence base of mostly face-to-face CBT, that patients with refractory IBS can benefit from CBT for IBS and that telephone-delivered (TCBT) or web-delivered (WCBT) can provide sustained improvements.

Author affiliations

¹Primary Care and Population Sciences, University of Southampton, Southampton, UK

²Department of Biostatistics and Health Informatics, Institute of Psychiatry, Psychology and Neuroscience, King's College, London, UK

³Department of Psychology, Institute of Psychiatry, Psychology and Neuroscience, King's College, London, UK

⁴Department of Health Services and Population Research, Institute of Psychiatry, Psychology and Neuroscience, King's College, London, UK

⁵Department of Psychology, University of Southampton, Southampton, UK

⁶Department of Gastroenterology, University Hospital Southampton, Southampton, UK

⁷Department of Gastroenterology, King's College Hospital, London, UK

⁸Department of Psychological Medicine, Institute of Psychiatry, Psychology and Neuroscience, King's College, London, UK

Collaborators ACTIB trial group: Trial Steering Committee (independent members): Peter White (chair), Else Guthrie, Qasim Aziz and Tom Sensky. Data Monitoring and Ethics Committee (DMEC) (independent members): Astrid Fletcher (chair), Charlotte Feinmann and Ronan O'Carroll. Patient and public involvement (PPI) member on TSC and DMEC: Jill Durnell. Trial management group PPI member: Kate Riley.

Contributors The principal investigators (HAE, RMM and TC) and the other coapplicants (PMC, PL, SL, FB, RL, NC) designed the study and obtained funding. The protocol was further developed by the Trial Management Group (TMG) and agreed by the Trial Steering Committee (TSC) and Data Monitoring and Ethics Committee (DMEC). The TMG, chaired by HAE, included all the authors of this paper and Jill Durnell and Kate Riley, the PPI representatives. The statistical analysis plan (SAP) was developed by KG, RH and SL, discussed by the TMG and DMEC and approved by the TSC before database lock. RH and SL carried out the main statistical analyses. The Regul8 website was previously developed in the MIBS NIHR RfPB funded study and was managed and updated for this study by SH and AS. TC and RMM developed the therapy protocols and treatment manuals, and trained and supervised the trial therapists. RMM led the website arm and TC the therapist arm. The CBT therapists were Suzanne Roche, Mary Burgess, Barbara Bowman, Natalia Fainblum, Fabio Simao, David McCormack, Caroline Stokes, Antonia Dittner, Claire Willis and Jerome Tierney. Independent assessors of therapy fidelity were Alison Griffiths and Sarah Lack. The chief investigator was HAE and the trial manager was GOR. SH, AS and SW were the research assistants. HAE led the primary care recruitment. NC and RL were clinic expert advisors and led the secondary care recruitment at Southampton and London, respectively. All authors contributed to this manuscript and approved it prior to submission. All named authors commented on drafts and approved the final report. Members of the writing group had responsibility for submitting the report, and HAE had the final responsibility for the decision to submit for publication.

Funding The project ACTIB (Assessing Cognitive-behavioural Therapy in Irritable Bowel Syndrome)—a randomised controlled trial of clinical and cost-effectiveness of therapist-delivered cognitive-behavioural therapy and web-based self-management in irritable bowel syndrome—was funded by the National Institute for Health Research (NIHR) HTA Project: 11/69/02, with additional support from the NIHR Clinical Research Network. This paper represents independent research with some staff part funded by the NIHR Biomedical Research Centre at South London and Maudsley NHS Foundation Trust and King's College London.

Disclaimer The views expressed are those of the author(s) and not necessarily those of the NHS, the NIHR or the Department of Health and Social Care.

Competing interests PL is the director of PGfAR and a member of the Journals Library Board. RMM reports personal fees from training in IBS intervention for Central and North West London NHS Foundation Trust and University of East Anglia, outside the submitted work. TC reports grants from Guy's and St Thomas' Charity. She was a faculty member, Third International Conference on Functional (Psychogenic) Neurological Disorders, September 2017, Edinburgh, member of the IAPT Education and Training ERG (2016–), member of the IAPT Outcomes and Informatics Meeting (2016–) and president of the British Association of Behavioural and Cognitive Psychotherapies (2012–2015) for which she did not receive payment. Workshops were delivered on medically unexplained symptoms, during the conduct of the study (money paid into KCL for future research). TC has a patent background IP—manuals were developed prior to trial starting. SL and KG report grants from NIHR. The TSC chair, PW, was a colleague of TC in the past but he has recently retired. RMM reports personal fees from training in IBS intervention for Central and North West London NHS Foundation Trust and University of East Anglia, outside the submitted work. Since this study was submitted, she has received payment for consultancy to Mahana Therapeutics. The CBT patient and the therapist manual used in the telephone CBT arm are freely available on the National Improving Access to Psychological Therapies (IAPT) for LTC/MUS website as part of evidence-based resources for IAPT. The patient manual is background IP developed by CI's RMM and TC in previous work. The therapist manual was developed for the ACTIB trial. These manuals were only made available once the 12-month ACTIB follow-up was complete. HAE, FB, GOR, AS, RH, SL, SH, SW, PMC, NC and RL have nothing to disclose.

Patient consent for publication Not required.

Ethics approval NRES Committee South Central, Berkshire, June 2013 (13/SC/0206).

Provenance and peer review Not commissioned; externally peer reviewed.

Data sharing statement The lead author (HAE) can be contacted regarding data sharing requests.

Open access This is an open access article distributed in accordance with the Creative Commons Attribution Non Commercial (CC BY-NC 4.0) license, which permits others to distribute, remix, adapt, build upon this work non-commercially,

and license their derivative works on different terms, provided the original work is properly cited, appropriate credit is given, any changes made indicated, and the use is non-commercial. See: <http://creativecommons.org/licenses/by-nc/4.0/>.

REFERENCES

- 1 Lovell RM, Ford AC. Global prevalence of and risk factors for irritable bowel syndrome: a meta-analysis. *Clin Gastroenterol Hepatol* 2012;10:712–21.
- 2 Hellier M, Sanderson J, Morris A, et al. Care of patients with gastrointestinal disorders in the United Kingdom: A strategy for the future. *Brit Soc Gastroenterol* 2006.
- 3 NICE. Irritable bowel syndrome in adults: diagnosis and management of irritable bowel syndrome in primary care. *NICE* 2015.
- 4 Spiller R, Aziz Q, Creed F, et al. Guidelines on the irritable bowel syndrome: mechanisms and practical management. *Gut* 2007;56:1770–98.
- 5 Hayee B, Forgacs I. Psychological approach to managing irritable bowel syndrome. *BMJ* 2007;334:1105–9.
- 6 Zijdenbos IL, de Wit NJ, van der Heijden GJ, et al. Psychological treatments for the management of irritable bowel syndrome. *Cochrane Database Syst Rev* 2009;40:CD006442.
- 7 Windgassen S, Moss-Morris R, Chilcot J, et al. The journey between brain and gut: A systematic review of psychological mechanisms of treatment effect in irritable bowel syndrome. *Br J Health Psychol* 2017;22:701–36.
- 8 Laird KT, Tanner-Smith EE, Russell AC, et al. Comparative efficacy of psychological therapies for improving mental health and daily functioning in irritable bowel syndrome: A systematic review and meta-analysis. *Clin Psychol Rev* 2017;51:142–52.
- 9 Everitt H, Moss-Morris R, Sibelli A, et al. Management of irritable bowel syndrome in primary care: the results of an exploratory randomised controlled trial of mebeverine, methylcellulose, placebo and a self-management website. *BMC Gastroenterol* 2013;13:68.
- 10 Ljótsson B, Falk L, Vesterlund AW, et al. Internet-delivered exposure and mindfulness based therapy for irritable bowel syndrome—a randomized controlled trial. *Behav Res Ther* 2010;48:531–9.
- 11 Hunt MG, Moshier S, Milonova M. Brief cognitive-behavioral internet therapy for irritable bowel syndrome. *Behav Res Ther* 2009;47:797–802.
- 12 Ljótsson B, Hedman E, Andersson E, et al. Internet-delivered exposure-based treatment vs. stress management for irritable bowel syndrome: a randomized trial. *Am J Gastroenterol* 2011;106:1481–91.
- 13 Ljótsson B, Hesser H, Andersson E, et al. Provoking symptoms to relieve symptoms: a randomized controlled dismantling study of exposure therapy in irritable bowel syndrome. *Behav Res Ther* 2014;55:27–39.
- 14 Kennedy T, Jones R, Darnley S, et al. Cognitive behaviour therapy in addition to antispasmodic treatment for irritable bowel syndrome in primary care: randomised controlled trial. *BMJ* 2005;331:435.
- 15 Moss-Morris R, McAlpine L, Didsbury LP, et al. A randomized controlled trial of a cognitive behavioural therapy-based self-management intervention for irritable bowel syndrome in primary care. *Psychol Med* 2010;40:85–94.
- 16 Everitt H, Landau S, Little P, et al. Assessing Cognitive Behavioural Therapy in Irritable Bowel (ACTIB): protocol for a randomised controlled trial of clinical-effectiveness and cost-effectiveness of therapist delivered cognitive behavioural therapy and web-based self-management in irritable bowel syndrome in adults. *BMJ Open* 2015;5:e008622.
- 17 Drossman DA. The functional gastrointestinal disorders and the Rome III process. *Gastroenterology* 2006;130:1377–90.
- 18 Francis CY, Morris J, Whorwell PJ. The irritable bowel severity scoring system: a simple method of monitoring irritable bowel syndrome and its progress. *Aliment Pharmacol Ther* 1997;11:395–402.
- 19 Spence MJ, Moss-Morris R. The cognitive behavioural model of irritable bowel syndrome: a prospective investigation of patients with gastroenteritis. *Gut* 2007;56:1066–71.
- 20 Godfrey E, Chalder T, Ridsdale L, Seed L, et al. Investigating the active ingredients of cognitive behaviour therapy and counselling for patients with chronic fatigue in primary care: developing a new process measure to assess treatment fidelity and predict outcome. *Br J Clin Psychol* 2007;46:253–72.
- 21 Müller-Lissner S, Koch G, Talley NJ, et al. Subject's Global Assessment of Relief: an appropriate method to assess the impact of treatment on irritable bowel syndrome-related symptoms in clinical trials. *J Clin Epidemiol* 2003;56:310–6.
- 22 Howie JG, Heaney DJ, Maxwell M, et al. A comparison of a Patient Enablement Instrument (PEI) against two established satisfaction scales as an outcome measure of primary care consultations. *Fam Pract* 1998;15:165–71.
- 23 Norton SC, Doyle T, Done F, et al. and Depression Scale: a meta confirmatory factor analysis. *J Psychosom Res* 2013;74:74–81.
- 24 Zigmond AS, Snaith RP. The hospital anxiety and depression scale. *Acta Psychiatr Scand* 1983;67:361–70.
- 25 Baldwin SA, Murray DM, Shadish WR, et al. Intraclass correlation associated with therapists: estimates and applications in planning psychotherapy research. *Cogn Behav Ther* 2011;40:15–33.
- 26 White IRR, P: Wood AM. Multiple imputation using chained equations: Issues and guidance for practice. 2010.

- 27 White IR, Thompson SG. Adjusting for partially missing baseline measurements in randomized trials. *Stat Med* 2005;24:993–1007.
- 28 Tonkin-Crine S, Bishop FL, Ellis M, *et al.* Exploring patients' views of a cognitive behavioral therapy-based website for the self-management of irritable bowel syndrome symptoms. *J Med Internet Res* 2013;15:e190–19.
- 29 Härter M, Woll S, Wunsch A, Bengel J, *et al.* Screening for mental disorders in cancer, cardiovascular and musculoskeletal diseases. *Soc Psychiatry Psychiatr Epidemiol* 2006;41:56–62.
- 30 Lackner JM, Jaccard J, Keefer L, *et al.* Improvement in Gastrointestinal Symptoms After Cognitive Behavior Therapy for Refractory Irritable Bowel Syndrome. *Gastroenterology* 2018;155:47–57.
- 31 Ljótsson B, Andersson G, Andersson E, *et al.* Acceptability, effectiveness, and cost-effectiveness of internet-based exposure treatment for irritable bowel syndrome in a clinical sample: a randomized controlled trial. *BMC Gastroenterol* 2011;11:110.
- 32 van Ballegooijen W, Cuijpers P, van Straten A, *et al.* Adherence to Internet-based and face-to-face cognitive behavioural therapy for depression: a meta-analysis. *PLoS One* 2014;9:e100674.
- 33 Moss-Morris R, McCrone P, Yardley L, *et al.* A pilot randomised controlled trial of an Internet-based cognitive behavioural therapy self-management programme (MS Invigor8) for multiple sclerosis fatigue. *Behav Res Ther* 2012;50:415–21.
- 34 Index of Multiple Deprivation Score, 2010. 2015 <https://data.gov.uk/dataset/98bd6fd3-d726-45fc-b415-cf8c91f7098b/index-of-multiple-deprivation-score-2010>.