



## King's Research Portal

DOI:

[10.1093/ehjci/jez169](https://doi.org/10.1093/ehjci/jez169)

*Document Version*

Peer reviewed version

[Link to publication record in King's Research Portal](#)

*Citation for published version (APA):*

Nazir, M. S., Ismail, T. F., Plein, S., Chiribiri, A., & Villa, A. D. M. (2019). Pulmonary arteriovenous malformations and embolic myocardial infarction identified with cardiovascular magnetic resonance. *European Heart Journal-Cardiovascular Imaging*, 20(12), 1430-1431. <https://doi.org/10.1093/ehjci/jez169>

### **Citing this paper**

Please note that where the full-text provided on King's Research Portal is the Author Accepted Manuscript or Post-Print version this may differ from the final Published version. If citing, it is advised that you check and use the publisher's definitive version for pagination, volume/issue, and date of publication details. And where the final published version is provided on the Research Portal, if citing you are again advised to check the publisher's website for any subsequent corrections.

### **General rights**

Copyright and moral rights for the publications made accessible in the Research Portal are retained by the authors and/or other copyright owners and it is a condition of accessing publications that users recognize and abide by the legal requirements associated with these rights.

- Users may download and print one copy of any publication from the Research Portal for the purpose of private study or research.
- You may not further distribute the material or use it for any profit-making activity or commercial gain
- You may freely distribute the URL identifying the publication in the Research Portal

### **Take down policy**

If you believe that this document breaches copyright please contact [librarypure@kcl.ac.uk](mailto:librarypure@kcl.ac.uk) providing details, and we will remove access to the work immediately and investigate your claim.

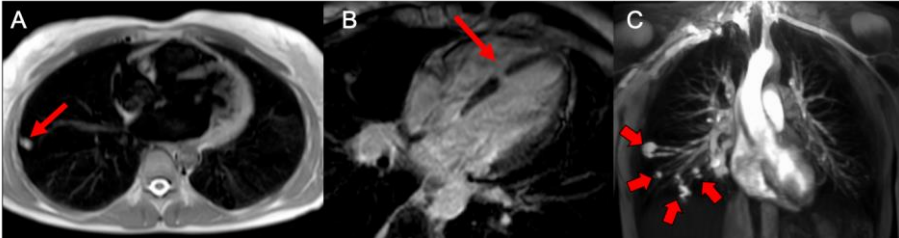
1 **Pulmonary arteriovenous malformations and embolic myocardial infarction identified with**  
2 **Cardiovascular magnetic resonance.**

3  
4 A 42 year old female developed central chest pain radiating to the left shoulder. 12 lead ECG  
5 demonstrated no ischaemia and the serum troponin was raised at 28 (normal < 13ng/L), which peaked  
6 to 140 and fell to 67. Dual antiplatelet therapy with aspirin and clopidogrel was commenced for a  
7 presumed acute coronary syndrome. Transthoracic echocardiography demonstrated preserved  
8 biventricular function and mild mitral regurgitation. Invasive coronary angiography demonstrated  
9 unobstructed coronary arteries and no coronary atheroma. A cardiovascular magnetic resonance  
10 (CMR) scan was arranged to investigate aetiology of the clinical presentation.

11 Initial low resolution CMR images demonstrated two hyperintense rounded subpleural solid nodules in  
12 the right lung (Panel A). Two, three and four chamber cine imaging confirmed good biventricular  
13 function. Short axis cine imaging demonstrated a subtle regional motion wall abnormality (RMWA) in  
14 the mid septal wall, which was not clearly evident on transthoracic echocardiography, and corresponded  
15 to an area of focal transmural myocardial enhancement on late gadolinium enhancement (LGE) imaging  
16 (Panel B). To further investigate the clinical presentation and right lung mass, 4D angiography was  
17 acquired during intravenous administration of 0.1mmol/kg of gadobutrol (Gadovist, Bayer, Germany).  
18 Multiple pulmonary arteriovenous malformations (AVM) were identified, with afferent (feeding) and  
19 efferent (draining) vessels which enhanced almost simultaneously (Panel C). In the context of  
20 unobstructed coronary arteries, mid septal RMWA, corresponding LGE and pulmonary AVMs, these  
21 findings were in keeping with a paradoxical embolic myocardial infarction. Antiplatelet therapy was  
22 stopped, and anticoagulation with warfarin was commenced. [Clinical follow-up confirmed preserved](#)  
23 [biventricular function on echocardiography.](#)

Formatted: Numbering: Continuous

24 **Figure**



25  
26

27 Panel A: Initial scout images demonstrates a subpleural hyperintense rounded solid nodule in the right  
28 lung (red arrow). Panel B: Late gadolinium enhancement imaging demonstrated a focal area of  
29 transmural myocardial enhancement indicating myocardial infarction (arrowed). Panel C: Maximum  
30 intensity projections (MIP) images of the dynamic 4D angiography images. Multiple nodules and  
31 serpiginous masses are present which indicate pulmonary arteriovenous malformations (red arrows).

32

33 **Supplementary data (videos)**

34

35 **Video 1.** Parasternal long axis cine on transthoracic echocardiography.

36 **Video 2.** 4 Chamber apical view on transthoracic echocardiography. Good biventricular function is  
37 seen, with no regional motion wall abnormality.

38 **Video 3.** Unobstructed right coronary artery on invasive coronary angiography.

39 **Video 4.** Unobstructed left circumflex artery on invasive coronary angiography.

40 **Video 5.** Unobstructed left anterior descending artery on invasive coronary angiography.

41 **Video 6.** Four, two and three chamber cine images with CMR. No clear regional motion wall abnormality  
42 is seen.

43 **Video 7.** Short axis cine at the mid left ventricle: There is subtle hypokinesia of the mid ventricular  
44 septum.

45

46

47 **Acknowledgements**

48 The authors would like to thank the radiographers and administration team at King's College London  
49 and the Guy's and St Thomas' NHS Hospital Cardiovascular MRI Service for their cooperation and  
50 assistance during the imaging and administration processes.

51

52

53 **Sources of Funding**

54 The authors acknowledge financial support from the Department of Health through the National Institute  
55 for Health Research (NIHR) comprehensive Biomedical Research Centre award to Guy's & St Thomas'  
56 NHS Foundation Trust in partnership with King's College London and King's College Hospital NHS  
57 Foundation Trust and by the NIHR Healthcare Technology Co-operative for Cardiovascular Disease at  
58 Guy's and St Thomas' NHS Foundation Trust. This work was supported by the Wellcome/EPSRC  
59 Centre for Medical Engineering [WT 203148/Z/16/Z]. MSN was funded by the UK Medical Research  
60 Council under grant number MR/P01979X/1. SP was funded by a British Heart Foundation Chair under  
61 grant number CH/16/2/32089. The views expressed are those of the authors and not necessarily those  
62 of the NHS, the NIHR, the DoH, EPSRC, MRC or the Wellcome Trust.

63

64 **Conflict of Interest**

65 No conflicts of interest.

66

67 **Ethics approval and consent to participate**

68 Inform consent was obtained from the patient.

69

70 **Consent for publication**

71 Consent for publication was obtained from the patient.