



King's Research Portal

DOI:

[10.1136/jramc-2013-000228](https://doi.org/10.1136/jramc-2013-000228)

Document Version

Publisher's PDF, also known as Version of record

[Link to publication record in King's Research Portal](#)

Citation for published version (APA):

Bricknell, M. (2014). For debate: the Operational Patient Care Pathway. *Journal of the Royal Army Medical Corps*, 160(1), 64-9. <https://doi.org/10.1136/jramc-2013-000228>

Citing this paper

Please note that where the full-text provided on King's Research Portal is the Author Accepted Manuscript or Post-Print version this may differ from the final Published version. If citing, it is advised that you check and use the publisher's definitive version for pagination, volume/issue, and date of publication details. And where the final published version is provided on the Research Portal, if citing you are again advised to check the publisher's website for any subsequent corrections.

General rights

Copyright and moral rights for the publications made accessible in the Research Portal are retained by the authors and/or other copyright owners and it is a condition of accessing publications that users recognize and abide by the legal requirements associated with these rights.

- Users may download and print one copy of any publication from the Research Portal for the purpose of private study or research.
- You may not further distribute the material or use it for any profit-making activity or commercial gain
- You may freely distribute the URL identifying the publication in the Research Portal

Take down policy

If you believe that this document breaches copyright please contact librarypure@kcl.ac.uk providing details, and we will remove access to the work immediately and investigate your claim.

For debate: the Operational Patient Care Pathway

Martin Bricknell

Correspondence to

Brig Martin Bricknell, Head Medical Operations and Capability, HQ Surgeon General, Joint Forces Command, Northwood HQ, Middlesex, HA6 3HP; martin.bricknell959@mod.uk

ABSTRACT

This paper introduces the Operational Patient Care Pathway which is a unified approach for clinical care to all operational patients arising from the Defence population at risk (PAR) exposed to the 'all-hazards environment' while deployed on military operations. It comprises three organisational models: the Healthcare Cycle, the Chain of Care and the Operational Patient Care Pathway. It is supported by a number of key definitions including: the 'All-Hazards Environment', the Defence PAR, and the seven Capabilities of Operational Healthcare. Key new clinical concepts include: Tactical Field Care, Care under Fire, Enhanced Field Care, Prolonged Field Care, Progressive Resuscitation and Enhanced Diagnostics. The Operational Patient Care Pathway has been introduced to embed the medical lessons from the last decade of military operations into concepts and doctrine for the Defence Medical Services of the future. Readers of this journal are encouraged to debate the Operational Patient Care Pathway paper in order to enable a final version to be published in the next revision of Joint Medical Doctrine.

INTRODUCTION

The last decade has seen highly challenging military operations in Iraq and Afghanistan during which clinical care for combat trauma patients has been transformed. The UK Defence Medical Services (DMS) are now widely acknowledged to be international leaders in this field. Incremental improvements in the system of care have led to a significant number of unexpected survivors compared with the performance of civilian trauma systems.¹

UK and NATO military medical doctrine is programmed to be reviewed over the next 2 years and the UK intends to formally subordinate national doctrine to NATO doctrine with the intention of publishing national inserts into the NATO doctrine publications hosted on UK websites. The Defence Medical Operations and Capability Group (DMOCG) is the senior national technical authority for national medical doctrine. The DMOCG has approved the publication of Joint Services Publication (JSP) 950 Medical Policy Leaflet 1-4-1, the 'Operational Patient Care Pathway' (OPCP). This is intended to be an interim publication of high level military medical concepts and doctrine in order to frame the development of subordinate UK national medical doctrine and to frame the UK position in the debate over future NATO military medical doctrine. This paper is a summary of the JSP 950 Leaflet and provides one of a number of fora whereby the concepts can be debated and refined. Readers are encouraged to provide feedback on the content of this paper or the whole JSP 950 leaflet through the letters pages in this journal (if their view merits wide circulation) or direct to

the author through the military email system. The DMOCG will review the JSP 950 leaflet in autumn 2014.

The OPCP set out in this paper provides a series of unifying concepts that articulate the clinical requirements for the UK military health services support (HSS) system on operations. The term HSS is used in place of 'medical support' to reflect the wide range of clinical capabilities provided by all professional groups within the DMS although it is recognised that the term medical support is used in common parlance for the same meaning. This includes clinical care for the 'medical' or 'non-trauma patient' as well as trauma care, and also covers the specific challenges faced by the Chemical Biological Radiological and Nuclear (CBRN) threat. The OPCP builds upon a concept for 'A Unified Emergency Care System'² and maximises existing doctrine. It uses imagery, mnemonics and other aids to learning that capture the key clinical and medical operational concepts to be taught to all members of the DMS. Completely new concepts are annotated by the **N** symbol whereas refined concepts use the **R** symbol based against existing medical doctrine definitions in Joint Doctrine Publication (JDP) 4-03 Joint Medical Doctrine. Specific terms are identified in bold and definitions from JDP 4-03 are shown in italics.

CONTEXT

The OPCP is set within the context of the holistic description of the whole DMS system contained within the Healthcare Cycle; the clinical outcomes required are described in the Chain of Care.

The Healthcare Cycle **N:** The Healthcare Cycle is the 'patient-centred' provision of Health Services Support to the Defence population at risk (PAR) throughout their career by the DMS (Figure 1). Defence medical operations and capability (DMOC) are those activities carried out by Medical Force Elements (Med FEs) in order to provide HSS to the Defence PAR deployed on operations. Med FEs are Force Generated (FGen) by the Service Commands and are controlled by the Chief of Joint Operations through the operational chain of command. The Surgeon General is the end to end Process Owner for the whole Healthcare Cycle and is responsible for assuring the quality of healthcare delivered to Service and other entitled personnel. Prior to, and on deployment, the DMS supports the provision of Force Health Protection (FHP) measures to Service personnel from the Defence PAR. Service personnel who become operational patients are supported by the seven capabilities of operational healthcare (defined later) and, if necessary, are medically evacuated from the theatre of operations. Patients are accepted into the NHS under the Reception Arrangements for Military

To cite: Bricknell M. *J R Army Med Corps* Published Online First: [please include Day Month Year] doi:10.1136/jramc-2013-000228

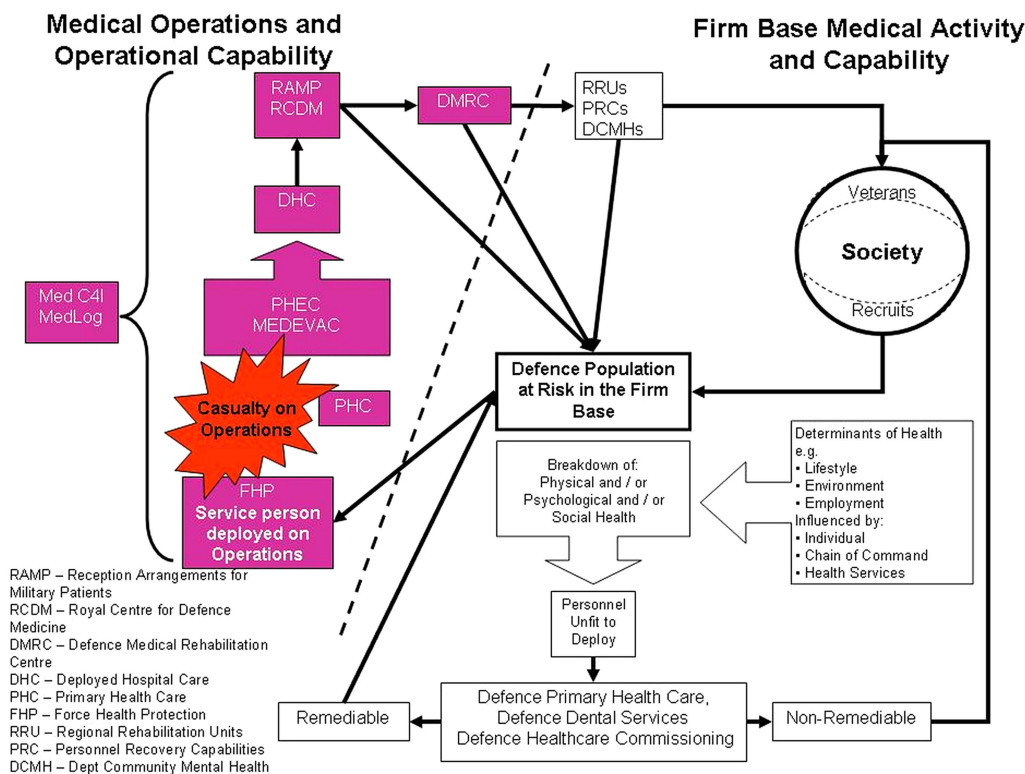


Figure 1 The healthcare cycle. Defence Medical Operations and Capability is shaded purple.

Patients and are usually admitted to the clinical unit of the Royal Centre for Defence Medicine. Those who require specialist rehabilitation are transferred to the Defence Medical Rehabilitation Centre; those requiring less specialised rehabilitation will be managed at regional rehabilitation units within the Defence Primary Healthcare (DPHC) organisation. Mental health support is provided by Departments of Community Mental Health. In all cases, after completion of care within the DMOC, Service personnel return to the Defence PAR under the purview of DMS Firm Base medical activities and capability; administration is undertaken by their own unit, or through Personnel Recovery Units or Centres that form the Defence Recovery Capability. Firm Base clinical services are provided on a Joint basis through DPHC, Defence Dental Services and Defence Healthcare Commissioning.

The Chain of Care █: The Chain of Care is the description of the clinical outcomes required from the OPCP (Figure 2). The Chain of Command and the DMS collectively contribute to the application of health protection measures to the Defence PAR as described in the Defence Health Strategy. If health protection fails, operational patients become sick or injured. First aid measures are essential to save life, limb and eyesight. The training of all personnel in essential first aid and a proportion of military personnel in extended first aid is the responsibility of the Chain of Command supported by technical training assistance from the DMS. The DMS trains clinical personnel to provide pre-hospital emergency care (PHEC) in order to take clinical responsibility from non-professional healthcare providers and institute life-saving measures. Progressive resuscitation (PR) extends these emergency measures from the pre-hospital environment to the capabilities of Deployed Hospital Care (DHC). As the patient stabilises, the clinical focus shifts to restoring physiological function through clinical care and medical evacuation. Once the patient is physiologically stable, care shifts to

promoting healing through wound care, nutrition and psychological support. Finally, the patient leaves hospital care. The DMS and the Chain of Command support the patient in rehabilitation and return to physical, psychological and social function enabling them to return to duty or prepare for discharge from service on medical grounds. The size of the ovals in Figure 2 is indicative of the scale of organisational effort (including, but not solely, numbers of personnel involved, proportion of command effort, financial cost) required to provide the clinical outcomes at each stage in the chain of care.

THE OPCP

The OPCP █ is a unified approach for clinical care to all operational patients arising from the Defence PAR, exposed to the 'all-hazards environment', deployed on military operations. It encompasses the seven Capabilities of Operational Healthcare

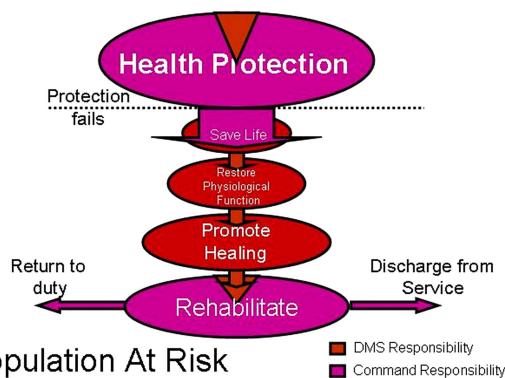


Figure 2 The Chain of Care.

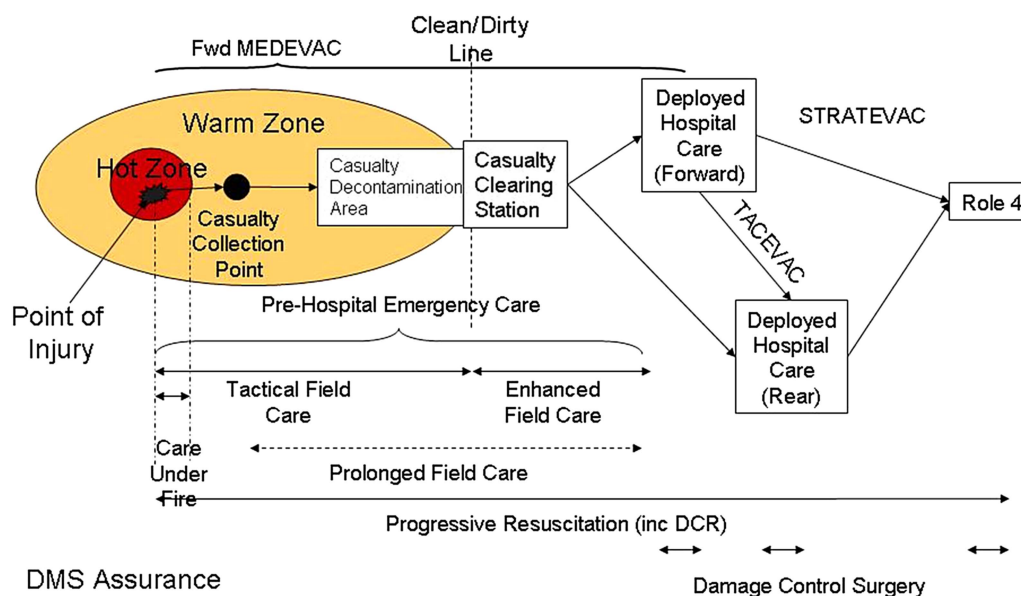


Figure 3 The Operational Patient Care Pathway.

and underpinning clinical concepts. The conceptual summary of the OPCP is shown in Figure 3.

The Operational Patient **N**: The term Operational Patient is *an individual from the Defence PAR with physical, psychological or social ill-health who requires clinical care from the DMS on deployed operations encompassing battle casualties or disease and non-battle injuries (DNBI)*. This definition has specifically been selected instead of combat casualty to widen the focus from care of trauma patients to holistic care of all patients who require HSS on operations. The term Casualty is *an Operational Patient prior to their admission to a medical treatment facility*; thus, the commonly used terms ‘Casualty Collection Point’ (CCP), ‘Casualty Decontamination Area’ (CDA) and ‘Casualty Clearing Station’ (CCS) are retained.

The Defence PAR on Operations **R**: *Eligibility for DMS medical support for a specific operation will be articulated in Medical Rules of Eligibility (MRoE) within operational orders. Members of all three Services are entitled to medical support, as are members of the Reserve forces, the Royal Fleet Auxiliary and civil servants deployed on operations. Captured personnel are also entitled. MOD contractors and nationals from NATO, the EU or other troop-contributing nations may be included, depending upon standing or other agreements. Eligibility for medical care for the wounded and sick is primarily derived from the provisions of the International Humanitarian Law. Therefore, the deployed medical contingent requires the capability to appropriately treat the UK military PAR, non-UK military personnel and civilians (including children and the elderly). The DMS follows the general obligation to treat others, and for treating civilians in certain circumstances, abides by The Geneva Convention 1, Article 12. The healthcare needs of non-UK military and civilian populations may demand some capabilities which are not routinely available from the Regular component of the DMS. The DMS will have the organisational competence to manage medical support to the Defence PAR including access to competent medical personnel (Regular, Reserve, civilian or contracted), clinical equipment and clinical training.*

The All-Hazards Environment **N**: The All-Hazards Environment is *the list of potential hazards to the Defence PAR*

summarised by the mnemonic CBRNE3T (Table 1). The Defence PAR may be at risk from a range of potential Hazards on military operations. A confirmed Hazard is defined as a Threat for a specific operation. This expands on the CBRNE acronym widely used in the civilian world for major incident planning and emphasises the importance of DNBI as the primary cause of health-related restrictions to human performance on operations. DMOC must be capable of supporting military operations while exposed to this All-Hazards Environment and be capable of providing clinical care to patients suffering from the consequences of exposure to one or more of these threats. The FHP estimate for a specific operation will determine the CBRNE3T threats to the Defence PAR defined in the

Table 1 The threats of CBRNE3T in the all-hazards environment

Threat	Definition
<u>C</u> hemical	Conventional chemical agent threats plus toxic industrial chemicals, riot control agents and chemical hazards derived from pharmaceuticals
<u>B</u> iological	Live organisms, toxins and biological hazards deliberately employed to harm the Defence PAR
<u>R</u> adiological	Material or events that release ionising (α , β , γ radiation and neutrons) and non-ionising radiation (including directed energy)
<u>N</u> uclear	Weapons or events that result in nuclear fission/fusion reactions
<u>E</u> xplosive (and ballistic)	All consequences of explosive activity on human bodies including gunshot wounds, indirect fire, improvised explosive devices, shells and bombs
<u>E</u> nvironmental	Environmental conditions likely to cause harm such as heat, cold and altitude
<u>E</u> ndemic	Infectious diseases (biological agents of operational significance) that pose a hazard to the health of the Defence PAR that are not deliberately released
<u>T</u> rauma	The trauma element of non-battle injury threats to health in order to complement the explosive (and ballistic) threats that also cause injury

PAR, population at risk.

MRoE. This will cover the impact of these threats across the three domains of health; physical, psychological and social.

The OPCP is illustrated in Figure 3. It combines concepts from incident management for trauma patients and CBRN patients; links these to the clinical capabilities are described in the seven Capabilities of Operational Healthcare and illustrate the continuous, seamless, escalatory increase in clinical care provided to the operational patient. There is a deliberate overlap in the boundaries between prehospital emergency care (PHEC) and PR in order to provide the maximum doctrinal freedom to medical operational planners in the specific employment of the clinical personnel and equipment in medical units. The key to successful delivery of the OPCP is the continuous and incremental provision of clinical care to meet the needs of the operational patient, independent of organisational boundaries.

The principles additionally apply to clinical support to the Defence PAR conducting training and other military activities but do not encompass additional clinical capabilities that are uniquely the purview of Firm Base HSS, even if delivered outside the UK, such as maternity and obstetric care that may be needed for Service families accompanying the Defence PAR on overseas postings.

There are two Zones of Care:

Hot 'non-permissive' Zone ■: The Hot Zone is a *non-permissive environment representing an immediate threat to personnel from direct fire or a known environmental threat*. Clinical care is limited to 'Care Under Fire' (CUF) covering only those techniques necessary to provide immediate life-saving interventions while the patient is being extracted. This is likely to be provided as self-administered or buddy-buddy first aid.

Warm 'semi-permissive' Zone ■: The Warm Zone is a *semi-permissive environment representing a specific secondary threat to personnel from indirect fire or other CBRNE3T threat*. There is not likely to be a demonstrable 'hard edge' to the Warm Zone. Clinical care is described as 'Tactical Field Care' (TFC) covering those interventions necessary to save/stabilise life and prepare the patient for medical evacuation. The CCP is likely to be within the Warm Zone. Conceptually the 'clean/dirty' line for the handover of casualties from the CDA is the edge of the Warm Zone and the CCS is outside the Warm Zone.

The area outside the 'Warm' Zone has explicitly *not* been labelled. There may be potential threats to the HSS system but these are not sufficiently specific to extend the radius of the Warm Zone.

Care of the casualty starts at the Point of Injury in the Hot Zone. The casualty receives CUF during extraction from the Hot Zone which extends to the remainder of the TFC capability. Casualties are amalgamated at the CCP. After initial triage, casualties are transported to a CDA where they are 'sanitised' to remove any threats to their health or that of their carers. If it is not possible to medically evacuate them directly to DHC, casualties are transported to a CCS for enhanced field care pending medical evacuation (MEDEVAC) to DHC. DHC may be organised in echelons of care, illustrated schematically as 'forward' and 'rear'. Prolonged Field Care is provided to casualties if there is likely to be a delay in meeting the 10-1-2 Medical Planning Guideline. The movement of operational patients between DHC facilities is Tactical MEDEVAC and their movement from the Joint Operational Area to Role 4 in the Firm Base is Strategic MEDEVAC (STRATEVAC). The DMS Inspector General is responsible for DMS Assurance of the OPCP under the direction of the Surgeon General.

10-1-2 Medical Planning Guideline ■: The 10-1-2 Medical Planning Guideline is *the guideline for the location of clinical capabilities by time in the OPCP*. It is the default for medical operational planning and any excursion from this guideline must be owned by the Operational Commander. The speed and quality of medical care can reduce the mortality and morbidity of operational patients. The ideal is always to deliver expert care as soon as possible after wounding. Evacuation should be to the most appropriate facility for the treatment of the casualty, noting that the most appropriate facility may not necessarily be the closest (Table 2).

All time delays carry clinical risk for patients. It is for commanders, advised by their medical staff, to balance these risks with operational and other factors and to determine whether or not the risks are acceptable. To achieve this in practice, medical planning timelines guide decision-making regarding the configuration and location of the MEDEVAC and treatment assets needed to provide appropriate medical coverage to the supported force. While primarily expressed as time for the trauma patient the principles apply to the non-trauma patient. The benchmark in civilian practice is rapid access within 8 min and hospital based surgery within 1 h of injury. Evidence from accumulated experience in Iraq, Afghanistan and earlier campaigns shows that there are three key timelines from Point of Injury to first surgical intervention and a fourth for in-theatre specialist clinical care. Specific terms are defined in the section on DHC.

Further (primary) surgery and extended diagnostics should be available for the severely injured and may require deployment of in-theatre specialist capabilities if STRATEVAC timelines prevent this guideline being met.

THE SEVEN CAPABILITIES OF OPERATIONAL HEALTHCARE

The seven Capabilities of Operational Healthcare are *the essential capabilities required for HSS on operations*. The DMS must be able to FGen Med FEs with these capabilities mission-tailored to the scale and complexity of a specific operation. Med FEs with these capabilities from environmental components will be integrated into a single HSS plan for the Joint

Table 2 The 10-1-2 timeline

Timeline	Definition and implications
10 min—Enhanced first aid	Enhanced first aid is <i>those immediate life-saving measures that are applied by personnel trained in military first aid</i> . Bleeding, airway control and administration of personal medical countermeasures for the most severely injured patients are to be achieved within 10 min of wounding (the so-called 'platinum ten minutes'). For the UK setting, the 10 min is predominantly met by the use of Team Medic qualified personnel, although DMS medical personnel may be tactically located to support this requirement
1 h—Enhanced field care (EFC)	EFC measures must be commenced by DMS medical personnel within 1 h of wounding
2 h—Damage control surgery (DCS) and Critical Care Unit support	Patients who require surgery should be under treatment in a facility manned and equipped for DCS (noting the complexity of injuries on operations). Depending on the specific and individual requirements, the aim is to be able to provide DCS within 1 h, but no later than 2 h of wounding. DCS should always be supported by Critical Care Unit support

DMS, Defence Medical Services.

Force. This may involve the use of multinational contributions to the HSS plan. The seven Capabilities of Operational Healthcare are listed below:

Medical Command, Control, Communication, Computers and Information (Med C4I) **R**

Med C4I is the authority, processes, communications architecture and information management resources employed in managing the DMOC system.

Force Health Protection **R**

FHP is defined as *the conservation of the fighting potential of a force so that it is healthy, fully combat effective and can be applied at the decisive time and place. It consists of actions taken to counter the debilitating effects of environment, disease and selected special weapon systems through preventive measures for personnel, systems and operational formations.* It considers force preparation measures, environmental health advice, in-theatre preventive measures, post-exposure measures and rehabilitation of the force. FHP must include competent medical advice in FHP for CBRN threats (in addition to the 'E3T'). FHP incorporates *Medical Intelligence* which is intelligence derived from medical, bio-scientific, epidemiological, environmental and other information related to human or animal health.

Pre-hospital emergency care **R**

PHEC is the continuum of emergency care provided to a casualty (by individuals or teams) from first clinical intervention at point of injury through to reception of the operational patient at DHC. The primary clinical output within PHEC is PR.

Progressive Resuscitation **N** (incorporating **Damage Control Resuscitation (DCR)** **R**): PR is the use of multiple techniques drawn from technical and organisational advances in clinical care including administration of antitoxic therapies for the restoration of physiological function for the operational patient. It extends from point of injury until departure from the Critical Care Unit capability (including the Critical Care Air Support Team functions and Critical Care Unit in Role 4). The **Critical Care Unit** **N** is the specific area in a DHC facility designated for the continued provision of PR after initial treatment pending medical evacuation to the next level of care. PR incorporates DCR for care of the trauma patient. DCR is defined as 'a systemic approach to major trauma combining the <C>ABC (catastrophic bleeding, airway, breathing, circulation) paradigm with a series of clinical techniques from point of wounding to definitive treatment in order to minimise blood loss, maximise tissue oxygenation and optimise outcome.'

PHEC comprises four clinical phases and two clinical nodes of care.

Tactical Field Care **N**: TFC is *those interventions necessary to save/stabilise life and prepare the casualty for medical evacuation.* It can be provided by any 'extended-trained' individual (incorporating Team Medic or other authorised extended qualification plus all DMS clinical personnel). TFC incorporates **Care Under Fire**: CUF is *those techniques necessary to provide immediate life-saving interventions to the casualty in the Hot Zone while the patient is being extracted.* The requirement for CUF is the basis of all first aid training taught to all members of the Armed Forces. **Enhanced Field Care (EFC)** **N** is *that emergency clinical care usually provided by a clinical team made possible by a more permissive environment using Battlefield Progressive Trauma Life Support,³ CBRN-Emergency Medical Treatment and other progressive*

clinical techniques (as prescribed in JSP 999 CGOs). Prolonged Field Care (PFC) **N** is *those additional techniques that sustain the casualty if the 10-1-2 Medical Planning Guideline is likely to be exceeded.*

Casualty Collection Point **N**: The CCP is *the first location where operational casualties from an incident are collected after evacuation from the Hot Zone at which TFC is undertaken.* It is likely to be in the Warm Zone and manned by one or more designated DMS individuals. The Land environment equivalent is a Company Aid Post while the maritime equivalent is the First Aid Post afloat.

Casualty Decontamination Area **N**: The CDA is *the location where contamination by threats (CBRNE3T) is removed from a casualty in order to remove any future threat to the health of the patient or the operational patient care system.* This is not a clinical node of care and may be performed by non-medical personnel trained for this role, especially in a CBRN threat environment.

Casualty Clearing Station **N**: The CCS is *the location of a Med FE that delivers Emergency Team Care to operational patients, usually under the supervision of an independent practitioner.* The environment specific FE is likely to be a Unit Aid Post (Army), Medical Reception Station (Army), Sick Bay or First Aid Post (Royal Navy), Role 1 (5) (RAF).

Primary Healthcare (PHC) **R**

PHC is *those general medical services, occupational health, dental services and intermediate care peripatetic services (eg, mental health, rehabilitation, genito-urinary medicine) provided outside DHC that contribute to the maintenance of the health of the force.* It is often delivered from Med FEs that provide the CCS function.

Deployed Hospital Care **R**

DHC is *those clinical services provided by clinical personnel usually employed within hospitals.* Access to DHC within the 10-1-2 Medical Planning Guideline is an essential component of the OPCP. Where time/distance precludes provision by a single DHC facility, DHC may be echeloned into DHC facilities illustrated as 'forward' and 'rear' facilities though an individual may be treated in more than two DHC facilities. For example, a patient may initially receive Damage Control Surgery (DCS) in a Role 2 Light Manoeuvre unit, have general primary surgery in a Role 2 Enhanced facility and then be transferred to a Role 3 facility for sub-specialist care such as ophthalmology or neurosurgery prior to STRATEVAC. DHC Forward facilities are likely to be mobile to enable the provision of PR and DCS within 2 h. DHC Rear facilities are likely to be static and focused on the provision of primary surgery and extended diagnostics. DHC covers the following specific clinical concepts:

Damage Control Surgery **R**: DCS is *a range of surgical interventions where completeness of the immediate surgical repair is sacrificed to achieve haemorrhage and contamination control, in order to avoid deterioration of the operational patient's condition.* It consists of emergency surgical procedures and treatment to stabilise casualties, in order to save life, limb or function, including rapid initial control of haemorrhage and contamination, temporary closure, and resuscitation. DCS techniques are applied when the magnitude of tissue and organ damage are such that surgery is likely to exceed the casualty's physiological limits. The concept is that only the minimum is done to deal with immediate life-threatening problems. Examples include: methods for rapid control of bleeding, control of enteric spillage without

Doctrine updates

restoration of gut continuity, thoracotomy for penetrating lung injury, external stabilisation of fractures, rapid amputation of a mangled limb in the presence of other equally serious injuries and temporary restoration of blood flow to a limb using vascular shunts. These procedures depend largely on the ability to provide PR and are therefore an interdisciplinary effort rather than solely a surgical challenge. They call for proper pre-operative planning as well as good peri-operative coordination between the various involved specialists. DCS should be followed later on by primary surgery, which is delayed until the various physiological and other relevant parameters have been restored to as close to normal as possible. It can only occur within a DHC unit. This usually requires a combination of general and orthopaedic surgery and should include burns and plastic surgery wherever possible.

Primary surgery **R**: Primary surgery is *the range of surgical procedures directed at repair of local damage caused by wounding, rather than correcting the generalised effects of trauma*. Whenever the operational circumstances and the patient's condition permits, it should be performed ideally within the first hour of trauma management and certainly within 4 h, as the delay to the initiation of primary surgery may allow further generalised effects to develop that may lead to an increase in mortality, morbidity and residual disability. The provision of primary surgery may require the deployment of surgical sub-specialist teams including ophthalmology, neurosurgery, head and neck surgery or maxillo-facial surgery.

Extended diagnostics **N**: Extended diagnostics are *those clinical support activities (eg, CT scan if not available as part of DCS, interventional radiology and specialist laboratory support including biochemistry, haematology and microbiology testing) that enable clinical therapies to address the specific cause of injury or illness that are additional to generic stabilising therapies*.

PAR specific/condition specific clinical capabilities **N**: PAR specific/condition specific clinical capabilities are *those clinical and clinical support capabilities within the OPCP that are mission-tailored for each specific operation dependant on the CBRNE3T threat and the MRoE*. DHC will need to care for the full Defence PAR and for the specific clinical conditions arising from the threats determined by the FHP estimate. Examples include care of captured personnel, emergency care for paediatric patients, tropical medicine or genito-urinary medicine. It may be necessary to deploy additional clinical specialists to manage PAR specific/condition specific cases including CBRN medicine, tropical medicine, paediatrics or maternal health specialists.

Medical Evacuation **R**

MEDEVAC is *the movement of operational patients under medical supervision in a designated transport platform equipped*

for role. MEDEVAC is controlled by a **Patient Evacuation Co-ordination Cell (PECC, N)** that operates under the authority of the battlespace owner to ensure that MEDEVAC platforms conform to the tactical environment. The PECC is responsible for ensuring the right patient is collected from the right pick-up point, transported to the right destination in the right platform, with the right medical escort in the right time. There are three categories of MEDEVAC.

Forward MEDEVAC **R** which is the movement of casualties from point of injury to DHC (including to/from the CCS).

Tactical MEDEVAC **R** which is the intra-theatre movement of patients between DHC facilities.

STRATEVAC **R** which is the movement of patients from the theatre of operations (usually to Role 4).

Medical Logistics (MedLog) **R**

MedLog is *the process of procurement, storage, movement, distribution, maintenance and disposition of medical material and pharmaceuticals, including blood, blood components and medical gases, in order to provide effective medical support and the application of this process in planning and implementation*.

CONCLUSIONS

The OPCP described in this paper is designed to provide a series of unifying concepts that articulate the clinical requirements for the UK military HSS system on operations. It captures the key concepts developed over the past decade of military operations and provides the framework upon which to develop future military medical capabilities. The readers of the journal are encouraged to debate the design of the key images and the definitions of specific terms in order to enable the DMOCG to refine the overall concept prior to formal publication in the next edition of Joint Medical Doctrine.

Collaborators Paper submitted on behalf of the Defence Medical Operations and Capability Group (DMOCG); The DMOCG comprises representatives from the following organisations: Assistance Chief of Defence Staff (Health) Directorate; Joint Medical Command; Defence Primary Healthcare; Joint Medical Command Medical Directorate; Joint Medical Command Defence Health Education and Training; Army Headquarters Medical Capability Directorate; Navy Headquarters Medical Directorate; Air Command Medical Directorate; Defence Concepts and Doctrine Centre; Defence Equipment and Supply.

Contributors MB is the primary author for this document. It is the product of collaborative work by members of the Defence Medical Operations and Capability Group.

Competing interests None.

Provenance and peer review Not commissioned; externally peer reviewed.

REFERENCES

- 1 Russell RJ, Hodgetts TJ, McLeod J, *et al*. The role of trauma scoring in developing trauma governance in the Defence Medical Services. *Philos Trans R Soc Lond B Biol Sci* 2011;366 (171–91).
- 2 Morgan-Jones D, Hodgetts TJ. A Unified Emergency Care system from first aid to definitive care. *JR Army Med Corps* 1999;145:132–5.
- 3 JSP 570 Battlefield Advanced Trauma Life Support: Ministry of Defence, London.

JRAMC

For debate: the Operational Patient Care Pathway

Martin Bricknell

J R Army Med Corps published online January 29, 2014

doi: 10.1136/jramc-2013-000228

Updated information and services can be found at:

<http://jramc.bmj.com/content/early/2014/01/29/jramc-2013-000228.full.html>

These include:

- | | |
|-------------------------------|---|
| References | This article cites 2 articles, 1 of which can be accessed free at:
http://jramc.bmj.com/content/early/2014/01/29/jramc-2013-000228.full.html#ref-list-1 |
| P<P | Published online January 29, 2014 in advance of the print journal. |
| Email alerting service | Receive free email alerts when new articles cite this article. Sign up in the box at the top right corner of the online article. |

Notes

Advance online articles have been peer reviewed, accepted for publication, edited and typeset, but have not yet appeared in the paper journal. Advance online articles are citable and establish publication priority; they are indexed by PubMed from initial publication. Citations to Advance online articles must include the digital object identifier (DOIs) and date of initial publication.

To request permissions go to:

<http://group.bmj.com/group/rights-licensing/permissions>

To order reprints go to:

<http://journals.bmj.com/cgi/reprintform>

To subscribe to BMJ go to:

<http://group.bmj.com/subscribe/>