

Supporting Information

Neutron-irradiated antibody-functionalised carbon nanocapsules for targeted cancer radiotherapy

Julie Tzu-Wen Wang^a, Cinzia Spinato^b, Rebecca Klippstein^a, Pedro Miguel Costa^a, Markus Martincic^c, Elzbieta Pach^d, Aritz Perez de Garibay^b, Cécilia Ménard-Moyon^b, Robert Feldman^e, Yves Michel^e, Martin Šefl^f, Ioanna Kyriakou^f, Dimitris Emfietzoglou^f, Jean-Claude Saccavini^e, Belén Ballesteros^d, Gerard Tobias^{c,*}, Alberto Bianco^{b,*} and Khuloud T. Al-Jamal^{a,*}

^aSchool of Cancer and Pharmaceutical Sciences, Faculty of Life Sciences & Medicine, King's College London, London SE1 9NH, UK

^bCNRS, Immunology, Immunopathology and Therapeutic Chemistry, UPR 3572, University of Strasbourg, ISIS, 67000 Strasbourg, France

^cInstitut de Ciència de Materials de Barcelona (ICMAB-CSIC), Campus UAB, 08193 Bellaterra, Barcelona, Spain

^dCatalan Institute of Nanoscience and Nanotechnology (ICN2), CSIC and the Barcelona Institute of Science and Technology, Campus UAB, 08193 Bellaterra, Barcelona, Spain

^eCis Bio International Ion Beam Applications SA, Gif sur Yvette 91192, France

^fMedical Physics Laboratory, University of Ioannina Medical School, Ioannina GR-45110, Greece

* To whom correspondence should be addressed.

E-mail: khuloud.al-jamal@kcl.ac.uk; a.bianco@ibmc-cnrs.unistra.fr; gerard.tobias@icmab.es

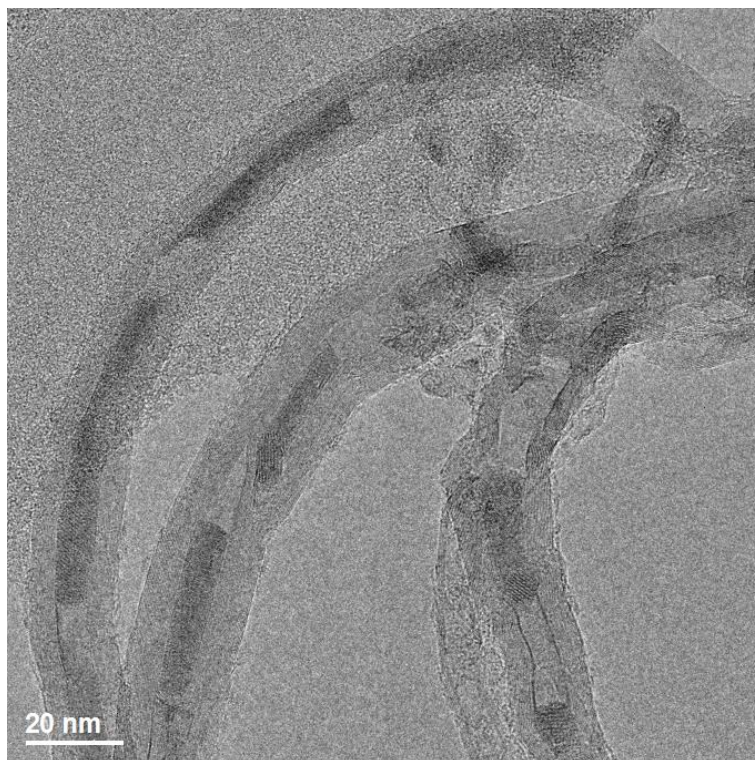


Figure S1: HRTEM image of SmCl₃ filled MWCNTs

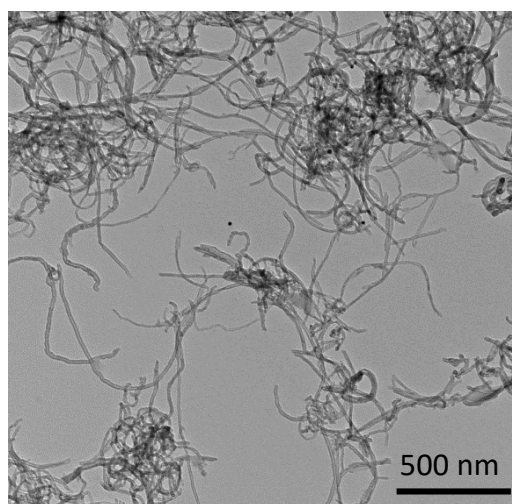


Figure S2: TEM image of ¹⁵²Sm@MWCNT-Ab after staining with the anti-rabbit IgG/AuNP.

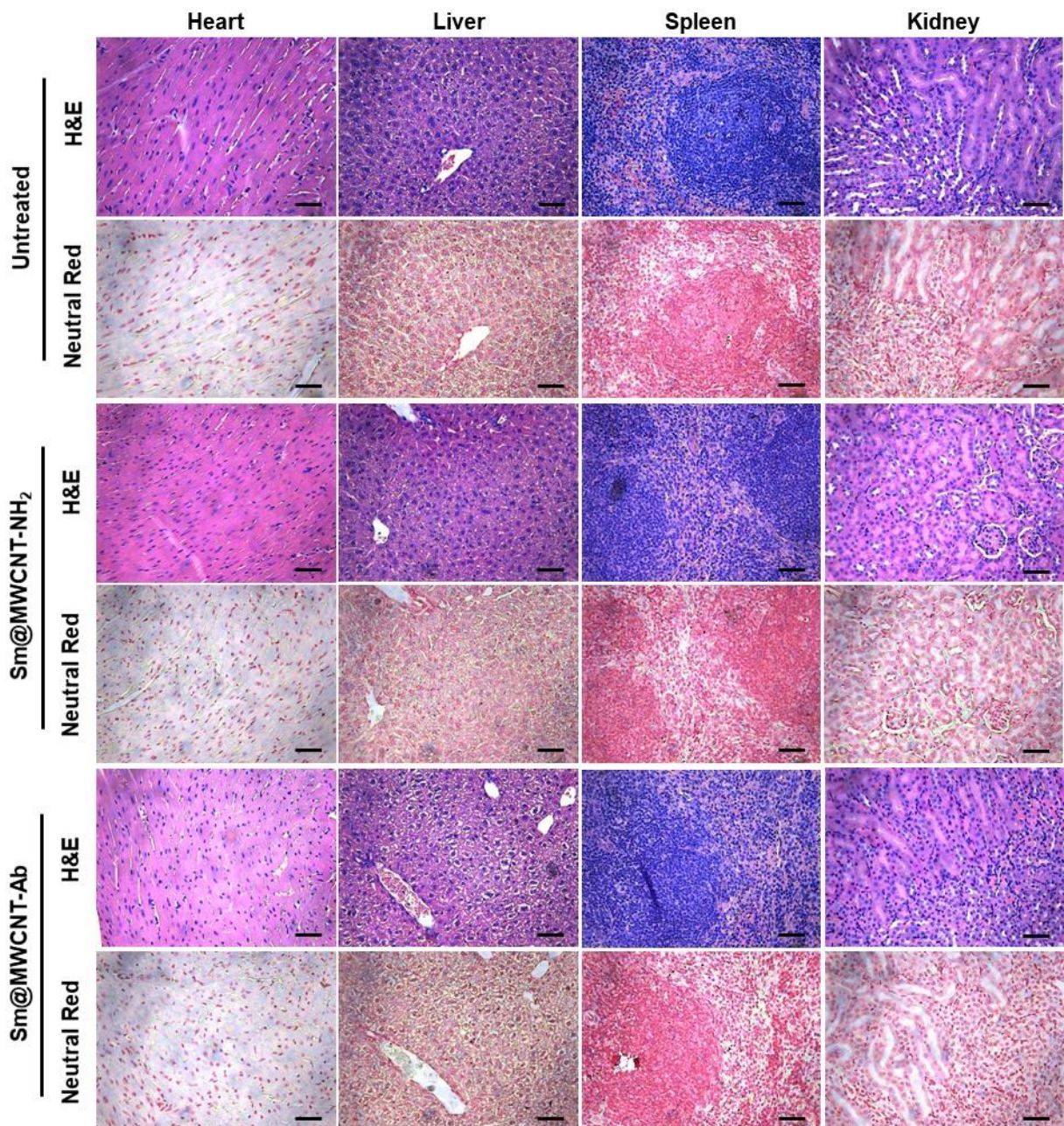


Figure S3: Histological examination of major organs in tumour-bearing mice post $^{153}\text{Sm@MWCNT-NH}_2$ and $^{153}\text{Sm@MWCNT-Ab}$ radiotherapy. EGFR-expressing B16F10 lung metastasis-bearing C57BL/6 mice received a single i.v injection of $^{153}\text{Sm@MWCNT-NH}_2$ or $^{153}\text{Sm@MWCNT-Ab}$ (~15 MBq, 200 μg) on Day 4 post tumour inoculation. Major organs including heart, kidney liver and spleen from the above two treated groups and the untreated group were harvested on Day 17 and proceeded with H&E (top panel) and Neutral Red (bottom panel) staining for histological examination. Scale bars: 50 μm .