



King's Research Portal

DOI:

[10.1136/jclinpath-2014-202571](https://doi.org/10.1136/jclinpath-2014-202571)

Document Version

Publisher's PDF, also known as Version of record

[Link to publication record in King's Research Portal](#)

Citation for published version (APA):

Rakha, E. A., Pinder, S. E., Bartlett, J. M. S., Ibrahim, M., Starczynski, J., Carder, P. J., Provenzano, E., Hanby, A., Hales, S., Lee, A. H. S., Ellis, I. O., & National Coordinating Committee for Breast Pathology (2015). Updated UK Recommendations for HER2 assessment in breast cancer. *Journal of Clinical Pathology*, 68(2), 93-9. <https://doi.org/10.1136/jclinpath-2014-202571>

Citing this paper

Please note that where the full-text provided on King's Research Portal is the Author Accepted Manuscript or Post-Print version this may differ from the final Published version. If citing, it is advised that you check and use the publisher's definitive version for pagination, volume/issue, and date of publication details. And where the final published version is provided on the Research Portal, if citing you are again advised to check the publisher's website for any subsequent corrections.

General rights

Copyright and moral rights for the publications made accessible in the Research Portal are retained by the authors and/or other copyright owners and it is a condition of accessing publications that users recognize and abide by the legal requirements associated with these rights.

- Users may download and print one copy of any publication from the Research Portal for the purpose of private study or research.
- You may not further distribute the material or use it for any profit-making activity or commercial gain
- You may freely distribute the URL identifying the publication in the Research Portal

Take down policy

If you believe that this document breaches copyright please contact librarypure@kcl.ac.uk providing details, and we will remove access to the work immediately and investigate your claim.



OPEN ACCESS

Updated UK Recommendations for HER2 assessment in breast cancer

Emad A Rakha,¹ Sarah E Pinder,² John M S Bartlett,³ Merdol Ibrahim,⁴ Jane Starczynski,⁵ Pauline J Carder,⁶ Elena Provenzano,⁷ Andrew Hanby,⁸ Sally Hales,⁹ Andrew H S Lee,¹ Ian O Ellis,¹ On behalf of the National Coordinating Committee for Breast Pathology

For numbered affiliations see end of article.

Correspondence to

Dr Emad Rakha, Division of Cancer and Stem Cells, School of Medicine, University of Nottingham and Nottingham University Hospital NHS Trust, Nottingham City Hospital, Hucknall Road, Nottingham NG5 1PB, UK; emad.rakha@nottingham.ac.uk, emadrakha@yahoo.com

Received 21 July 2014

Revised 21 September 2014

Accepted 30 September 2014

Published Online First

8 December 2014

ABSTRACT

Human epidermal growth factor receptor 2 (HER2) overexpression is present in approximately 15% of early invasive breast cancers, and is an important predictive and prognostic marker. The substantial benefits achieved with anti-HER2 targeted therapies in patients with HER2-positive breast cancer have emphasised the need for accurate assessment of HER2 status. Current data indicate that HER2 test accuracy improved following previous publication of guidelines and the implementation of an external quality assessment scheme with a decline in false-positive and false-negative rates. This paper provides an update of the guidelines for HER2 testing in the UK. The aim is to further improve the analytical validity and clinical utility of HER2 testing by providing guidelines of test performance parameters, and recommendations on the postanalytical interpretation of test results. HER2 status should be determined in all newly diagnosed and recurrent breast cancers. Testing involves immunohistochemistry with >10% complete strong membrane staining defining a positive status. *In situ* hybridisation, either fluorescent or bright field chromogenic, is used either upfront or in immunohistochemistry borderline cases to detect the presence of *HER2* gene amplification. Situations where repeat HER2 testing is advised are outlined and the impact of genetic heterogeneity is discussed. Strict quality control and external quality assurance of validated assays are essential. Testing laboratories should perform ongoing competency assessment and proficiency tests and ensure the reliability and accuracy of the assay. Pathologists, oncologists and surgeons involved in test interpretation and clinical use should adhere to published guidelines and maintain accurate performance and consistent interpretation of test results.

INTRODUCTION

Overexpression of the human epidermal growth factor receptor 2 (HER2) protein, mainly due to *HER2* gene amplification, in breast cancer is associated with aggressive histological features and poor prognosis.^{1,2} Several randomised clinical trials have demonstrated substantial survival benefits in patients with HER2-positive breast cancer treated with anti-HER2 targeted therapy, such as trastuzumab^{3–5} and the tyrosine kinase inhibitor lapatinib^{6–8} but not in HER2-negative patients.⁹ This, in addition to potential side effects of these costly drugs and evidence of higher response rates to neoadjuvant chemotherapy in HER2-positive

tumours,¹⁰ has emphasised the need for accurate assessment of HER2 status in patients with all-invasive breast cancer. Early studies, with relatively small numbers of cases, suggested that as many as 30% of breast cancers had HER2 overexpression, with a false positive rate up to 19% and a false negative rate of 5–10%.^{11–13} However, following publication of guideline recommendations^{11 14–18} and refinement of test performance parameters including the standardisation of tissue handling, assay methodology and adopting quality assurance measures, recent data indicate that the frequency of HER2 positivity is between 13% and 20%.^{11 12 19–21} The false positive rate is reduced to less than 6%, the false negative rate is much lower (<2%) and, importantly, the proportion of inconclusive cases is significantly reduced.^{11 12 19 20} To ensure the highest degree of test accuracy, reproducibility and precision, there is a need to further standardise and improve the quality of technical aspects such as assay performance, validation, proficiency testing and accreditation. These guidelines, which are presented on behalf of the UK National Coordinating Committee for Breast Pathology, aim to update the previous UK guidelines^{14–16} and provide recommendations on the preanalytical and postanalytical assay performance parameters and give advice on methodology and quality assurance measures for HER2 testing.

PREANALYTICAL MEASURES

Specimens

HER2 status should be assessed in all invasive primary breast carcinomas and in recurrent and metastatic tumours whenever biopsy tissue is available. Bilateral carcinomas, histologically distinct ipsilateral carcinomas or widely separated carcinomas considered to be separate synchronous primary tumours should each be assessed. It is deemed reasonable not to assess multiple ipsilateral tumours if they are histologically similar and collocated in the same quadrant/region of the breast. There is no consensus on testing residual invasive tumour following neoadjuvant therapy, although some recommend this approach. Retesting non-responding stable or progressive HER2-negative tumours particularly high-grade tumours or those with a long time period between preoperative biopsy and excision may be considered but cannot be recommended routinely in view of the lack of evidence.



Open Access
Scan to access more
free content



CrossMark

To cite: Rakha EA, Pinder SE, Bartlett JMS, et al. *J Clin Pathol* 2015;**68**:93–99.

Best practice

Excellent concordance between core biopsy and surgical specimens has been shown using immunohistochemistry (IHC) and *in situ* hybridisation (ISH).^{20 22 23} In the majority of UK centres, HER2 testing is performed on the diagnostic needle core biopsy specimens, mainly to ensure timely availability of results at the time of postoperative multidisciplinary team (MDT) treatment planning discussion and also to enable consideration for neoadjuvant treatment use which is increasingly used for operable cases. Although assessment of HER2 status on needle core biopsy is recommended and no repeat on excision specimens is needed if the test is clearly positive or negative, performing/repeating the assay on incisional or excisional surgical specimens should be considered if:

(1) the core biopsy is not available (ie, there is only a cytology sample); or (2) there is a possibility that the HER2 test on the core biopsy is unreliable or unrepresentative of the tumour identified in the resection specimen as follows:

1. HER2 assessment is uninterpretable on the core due to technical artefacts (ie, suboptimal processing or staining) or there is doubt about the core biopsy handling.
2. The core biopsy HER2 status remains in the equivocal category after IHC and ISH; for example, repeat assessment is advised if the core biopsy was scored as 2+ on HER2 IHC with borderline negative ISH (ratio of number of *HER2* to chromosome 17 centromere copies of 1.8–1.99 or *HER2* gene copy number is 4–6).
3. Invasive tumour on the core is too small for reliable assessment, or if invasive disease is intimately admixed with *in situ* carcinoma, or only identified in the excision specimen. There is insufficient data to define the amount of invasive tumour tissue in core biopsy sufficient for analysis; however this can be left to the reporting pathologist's discretion.
4. If the tumour in the resection specimens is morphologically distinct from that in the core biopsy, for example of a clearly different histological type or histological grade (eg, low grade on the core and high grade on the excision, but not just reflecting minor difference in the mitotic count or proportion of solid areas).²⁴ A repeat may also be undertaken on concurrent metastatic nodal disease if it is morphologically distinct from the primary breast tumour.
5. If the core biopsy staining is heterogeneous and shows a focus of strong HER2 positivity in <10% of the area of the invasive carcinoma in the core biopsy, HER2 testing should be repeated on the excision specimen. If this pattern is detected on the excision specimen, a different tumour block or a nodal metastasis can be tested, to determine the percentage of positive/amplified tumour present in a larger tumour sample.

Fine needle aspirates from primary breast carcinoma are not suitable for assessment of HER2 status as the distinction between invasive and *in situ* disease cannot be made on such samples. However, if fine needle aspiration (FNA) is the only material available, or in metastatic disease, some evidence indicates that ISH is reliable for assessing HER2 status in liquid-based and cell block preparations.²⁵ In the case of metastatic bone lesions that require HER2 assessment, it should be noted that decalcification techniques have the potential to influence immunohistochemical assessment in a detrimental manner and such decalcified samples should be tested with ISH methods.^{26 27}

Fixation and processing

Good fixation of specimens used for HER2 testing should be ensured and the cold ischaemic time (time from removal from

the patient to placing in fixative (cold ischaemic time)) should be as short as possible, certainly less than 1 h.²⁸ Formalin fixed, paraffin embedded tumour tissue samples are appropriate for assay. Tumours samples should be fixed in buffered formalin and embedded in paraffin wax; fixatives containing alcohol can result in staining of normal tissue and use of Bouin's fixative will preclude testing by fluorescence *in situ* based methods. Other methods of tissue fixation can also adversely affect antigen reactivity. At least 6 h fixation is recommended for core biopsies. Surgical specimens should be incised as soon as possible through the carcinoma to allow initial penetration of fixative and then sliced into 5–10 mm slices to ensure rapid penetration and even fixation. Tissue should be placed in an adequate volume (ideally 10:1; fixative:tissue) of fixative for at least 24 h and not more than 72 h. Centres using rapid fixation and processing must validate their methodology for HER2 assessment.

Sections should be stained within 1–2 days of cutting and drying. Excessive section drying time has also been shown to cause a loss of HER2 expression and it is therefore recommended that freshly cut sections are either dried at 60°C for 1 h or 37°C overnight²⁹ (<http://www.ukneqasicc.ucl.ac.uk/neqasicc.shtm>).

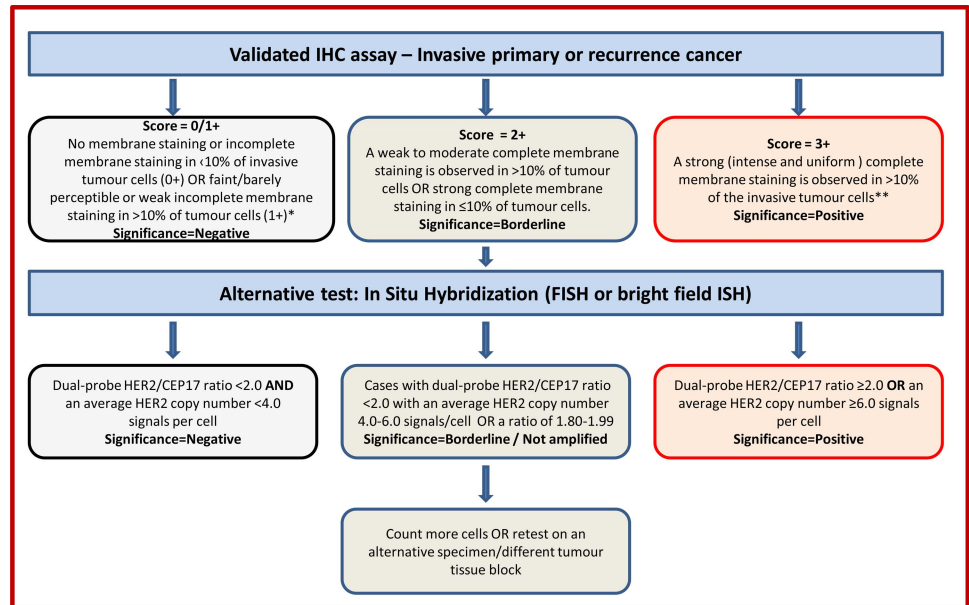
ALGORITHMS FOR HER2 TESTING

IHC for detection of protein overexpression and ISH for detection of gene amplification status are the techniques recommended for determining HER2 status. High concordance between IHC and gene amplification status is reported.^{16 30 31} The current UK recommendations for HER2 testing are for a two-tier system using IHC with reflex ISH testing if required, using the model shown in [figure 1](#), or a one-tier ISH strategy. In general testing is performed using IHC with analysis of equivocal cases by ISH, but this does not preclude laboratories from using primary HER2 ISH testing, particularly if the quality of tissue fixation is questionable.³² ISH has usually been conducted using a fluorescence ISH (FISH) technique. Bright-field ISH, which can be used to assess HER2 status with a regular light microscope, is now accepted as an alternative to FISH.³³ The most common bright field ISH uses a DNA probe coupled to a chromogenic ISH or silver ISH detection system, or a combination of both.³³ ISH can be conducted using a single probe to enumerate HER2 copies per nucleus or as a dual-probe technique which allows determination of the HER2:CEP17 ratio and *HER2* gene copy number. For this reason the inclusion of a chromosome 17 probe is strongly advocated. Currently, other available HER2 testing techniques (PCR, ELISA, Southern blotting, mRNA assays and DNA microarray) should be used for research only. Similarly, HER2 results obtained from a non-ISH technique as part of a prognostic panel cannot be regarded as diagnostic and should not replace standard assay methods detailed above.

Scoring immunohistochemistry

Only membrane staining of the invasive tumour should be considered when scoring HER2. Cytoplasmic staining and staining of *in situ* disease should not be scored, and normal epithelium should be negative. The HER2 IHC scoring method is a semi-quantitative system based on the intensity of reaction product and percentage of membrane positive cells, giving a score range of 0–3+ ([figure 1](#)). Samples scoring 3+ are regarded as unequivocally positive, and those scoring 0/1+ as negative. Borderline scores (2+) are regarded as equivocal and mandate further assessment using ISH ([figure 1](#)). Appropriate controls

Figure 1 Recommended HER2 scoring algorithm for immunohistochemistry (IHC) and *in situ* hybridisation (ISH). *Insufficient data is available to comment on moderate complete membrane staining in $\leq 10\%$ of tumour cells or strong incomplete membrane staining in $>10\%$ of tumour cells. A repeat on another specimen/tissue block is advisable. **Membrane staining must be intense and uniform and resemble chicken-wire. Ignore incomplete or pale membrane staining in the percentage estimation.



featuring different scores (3+, 2+ and 1+/0) should be included in every test run. Some centres also include an on-slide positive control section. The HER2 test should be reported as indeterminate, and repeated where possible, if technical issues prevent one or both tests (IHC and ISH) from being reported as positive, negative or equivocal. Examples include, inadequate specimen handling, artefacts (eg, crush or marked edge artefacts) that make interpretation difficult, analytical testing failure or if controls are not as expected (ie, sample shows strong membrane staining of normal breast tissue). In such a case, an alternative test, or another specimen if available, should be used to determine HER2 status. These guidelines revert to the previously used IHC criterion of $>10\%$ cells staining for HER2^{14 15} instead of the $>30\%$ cut-off used in the previous guidelines.^{11 16}

Scoring ISH

HER2 ISH testing, which uses a dual probe method, is initially expressed as the ratio of *HER2* signal to chromosome 17 centromeric enumeration probe (CEP) signal. Subsequently the average *HER2* gene copy number reporting has been used in some countries when using dual probe and single *HER2* gene probe methodology. The UK recommendation is to use dual probe ISH and report the HER2/CEP17 signal ratio and *HER2* copy number. Tumours showing a ratio ≥ 2.0 and/or a mean *HER2* gene copy number ≥ 6 are considered to be positive. Assigning cases as positive based on a *HER2* gene copy number ≥ 6 where the HER2/CEP17 ratio is < 2 remains controversial but is recommended as its inclusion aligns with national guidance in other countries.²¹ Cases with dual-probe HER2/CEP17 ratio < 2.0 with an average HER2 copy number < 4.0 signals/cells are considered as HER2 negative (figure 1). Classification of cases with monosomy of chromosome 17 and a HER2/CEP17 ratio > 2.0 remains controversial with uncertain anti-HER2 treatment benefit^{34 35} but current consensus²¹ is to regard such cases as amplified.

A selection of normal cells should be assessed to confirm successful hybridisation, detection and visualisation, before assessment of the invasive carcinoma. The number of chromosome 17 and *HER2* signals is scored and recorded and the mean *HER2* to chromosome 17 copy ratio is calculated for 20–60

cells, where possible using at least three distinct tumour fields. In most cases, where either clear amplification is observed or the ratio is below 1.5, scoring of 20 tumour cells is sufficient. Only cells in which the nuclear borders can be identified should be counted. Overdigested, damaged and truncated nuclei should not be scored. Only cells with minimum one copy of HER2 and CEP17 should be scored. The location of the areas assessed should be recorded. In cases where either tumour heterogeneity is seen, or if the ratio is close to 2.0 or if the average copy number is between ≥ 4.0 and < 6.0 signals/cell, more cells should be scored (at least 60), for details see below. Samples with > 2.0 copies of *HER2* for each chromosome 17 in the fields assessed are considered to be amplified. The HER2 ISH test should be reported as indeterminate and a repeat/alternative test (on the same or another specimen) is requested in the following situations: Controls are not as expected, nuclear resolution is poor, if a significant proportion of signals are unscorable due to weak signals or $> 10\%$ of signals occur over cytoplasm, autofluorescence is strong or the observer cannot find and count at least two areas of invasive tumour.

HER2 heterogeneity

Genomic heterogeneity refers to the coexistence of more than one population of tumour cells with distinct HER2 amplification characteristics within the same tumour. Intratumoral heterogeneity can be seen as a clustered form where distinct populations/clones of amplified and non-amplified tumour cells coexist, or as a mosaic form which includes the presence of isolated amplified cells in a predominantly non-amplified tumour or a diffuse mixture of amplified and non-amplified cells across the tumour.^{21 36} While such heterogeneity is generally uncommon in breast cancer, the following approach has been proposed to manage heterogeneous *HER2* gene amplification in breast cancer and is recommended in these guidelines³⁷:

In all cases where ISH is performed the entire slide should be scanned before counting, areas of apparent heterogeneity should be identified during this scan and/or by reference to an IHC stained slide. The number of chromosome 17 (CEP17) and *HER2* signals should be counted in 20–60 non-overlapping invasive cancer cell nuclei, using at least three distinct tumour fields. If there is evidence of heterogeneity between fields (or

Best practice

less frequently within fields) additional cells (at least 20 per field) and/or fields (up to 6) should be counted. The *HER2*/CEP17 ratio should be calculated for each field individually. Where the mean *HER2*/CEP17 ratio in any field is 2.00 or greater, the tumour should be regarded as amplified. For all cases where the ratio is between 1.80 and 2.20 results should be based on counting at least 60 tumour cells, and in cases where heterogeneity is suspected this should be 60 cells per assessed field. In rare cases where amplified and non-amplified tumour cells are intermingled in a single field, interpretation is difficult and evidence is lacking. We suggest that for such cases only the presence of clearly amplified cells, with multiple *HER2* signals, is considered evidence of heterogeneity, again evidence is lacking in this area. Current evidence does not support using the existence of small numbers of apparently amplified cells within an individual tumour field to identify heterogeneous amplification.^{36 38}

In borderline cases, that is, those with a *HER2*/CEP17 ratio of 1.80–2.20, additional cells should be counted when possible (optimally a minimum of 60 per case), ideally this should include a dual count (from a second observer; either internally or in a second centre). The optimal approach to improving accuracy in this range is to increase the number of cells counted to 60–120, and/or repeat the test. A ratio of 1.80–1.99, after counting further cells and/or repeating the test, should be reported as borderline but not amplified and include a clear statement that the carcinoma is regarded as *HER2* negative (taking the mean *HER2* copy number into consideration (mean <6 copies/cell)). A ratio of ≥ 2.00 should be reported as amplified, and regarded as *HER2* positive. Data on the response of patients to trastuzumab whose cancers fall within the borderline amplified category are not available; a statement to this effect can be included in reports. While these guidelines are sufficient for the majority of cases, there are occasions when difficult cases should be referred to expert centres for guidance.

Variation increases with highly amplified samples, and is not critical where the ratio of *HER2*/CEP17 exceeds 4. Where possible, count all signals, but if this is not possible, for example if clusters are present, then try to estimate the number of signals. Count doublets as a single signal. Where resources permit, representative images can be captured and archived. Difficult cases should be assessed by a second observer. A minimum of 10% of cases should be double-reported to ensure consistency between observers.

The ISH report should include: the number of cells scored, the average *HER2* and CEP17 copy number and the *HER2*/CEP17 ratio. Unusual features should be noted. For heterogeneous cases all these details should be reported for each subclone. If there is a problem in specimen handling and/or processing (ie, non-adherence to the guidelines), this should be documented in the report.

Impact of heterogeneity of *HER2* IHC and ISH

Although a cut-off of >10% of the invasive tumour area using IHC is used to define positivity, cases showing complete intense membrane staining in <10% of tumour cells are seen, albeit rarely, and should be considered in the borderline category. In such cases, a repeat of the *HER2* IHC test on another specimen (eg, a different tumour block) should be undertaken, to determine the percentage of positive tumour present. If this repeat IHC assessment shows a similar pattern, ISH should be performed. Variation in immunostaining between the periphery and centre of tumours can be due to a fixation gradient.

Defining *HER2* positivity using ISH may be complex in cases with intratumoral heterogeneity (see above for scoring methodology). Such genetic heterogeneity affects a proportion of breast cancers (11–40%³⁶) and is more frequently seen in *HER2*-positive tumours. Although no clinical data is available to guide on the likely response of genetically heterogeneous tumours harbouring *HER2*-amplified subclones to trastuzumab, it would be valuable to standardise the definition of genetic heterogeneity to facilitate future study of its clinical relevance.³⁶

Evaluation

For assessment of *HER2* IHC and ISH preparations, training and experience in interpretation of histological characteristics of breast tissue is essential. Recognition of different histological tumour types is required. In particular, *HER2* status should only be determined on the invasive portion of the tumour, and neither IHC nor ISH should be reported in isolation. If it is difficult to differentiate invasive from *in situ* disease in the index tumour block submitted for ISH, IHC markers for myoepithelial cells can be used.

Image analysis systems may provide alternatives to manual scoring for *HER2* IHC and ISH. However, at present, insufficient evidence is available to recommend their routine use in the diagnostic setting.

QUALITY ASSURANCE MEASURES

Controls

- ▶ The inclusion of controls, ideally including on-slide control (s), and their detailed scrutiny are essential to ensure test accuracy. Controls whose *HER2* status has been validated and producing results close to important decision-making points are recommended. Tissue-based controls, from breast cancers, should also be used in all assay runs, ideally showing 3+, 2+ and 1+/0 patterns. Control material should be similarly fixed and processed to the test tissue. Control sections should ideally be cut at the same time as the test material. Long-term storage of pre-cut control sections is strongly discouraged. There is no evidence that storage of blocks leads to deterioration of signal.
- ▶ Cell line preparations containing multiple samples of known *HER2* status characterised by FISH and IHC and inclusion of a tumour tissue from IHC 3+ case on each slide are useful as additional controls.

Excessive antigen retrieval should be monitored by evaluating normal breast epithelial cells as an internal control. Should membrane staining be identified in the normal cell population, excessive antigen retrieval may have occurred and retesting of the entire run should be considered. Any such tests should certainly be interpreted with great care; it is reasonable to score a 0 or 1+ tumour as negative, but 2+ or 3+ tumours should have staining repeated. If there is doubt between a 1+/2+ result or a 2+/3+ result, either the IHC should be repeated or amplification status should be assessed using ISH. If membrane staining of normal epithelial cells is seen in a number of cases from the same staining run consideration should be made to repeat staining of the whole run.

- ▶ Crushing and edge artefact, particularly affect core biopsies. ISH, or repeat IHC on the surgical specimen, may be needed. The potential gradient effects of suboptimal fixation, particularly in larger surgical specimens, must also be considered in interpretation of staining.
- ▶ It is essential that assay procedures be standardised so that staining is reliable. As there can be variation between batches of reagents, it is vital that controls are assessed critically for

every run. New batches of antibody should also be tested before commencing routine application. Use of standardised operating procedures, including routine use of control materials, is recommended.

Appropriate laboratory assay methods

For IHC and ISH based HER2 testing, comprehensive standardisation of methodology, including monitoring of scoring procedures and the inclusion of validated controls, is mandatory. In the UK, participation and satisfactory performance in the UK National External Quality Assessment Scheme for Immunocytochemistry and *In Situ* Hybridisation (UK NEQAS ICC & ISH) HER2 IHC and ISH modules is a requirement (<http://www.ukneqasicc.ucl.ac.uk>).

Standardisation of HER2 IHC staining is best achieved by using a commercial kit/assay. Inhouse 'home-brew' (laboratory validated) methods are not recommended but, if used, strict protocols need to be followed, including choice of antibody, antibody dilution and retrieval method, each of which can cause variability in staining results. If a commercial kit/assay is used, it is recommended that laboratories adhere strictly to the kit/assay protocol and scoring methodology. Local modifications of techniques can lead to false positive and negative results. Therefore, it is important to check and audit controls carefully in order to ensure test accuracy. Laboratories using bright field ISH should perform an initial validation against FISH.

Interobserver variation in the assessment of IHC staining can lead to misclassification of HER2 status. Each individual assessor should standardise scoring against known positive, negative and borderline cases. It is also preferable to assess comparability of scoring with a colleague on a regular basis. Before undertaking evaluation of HER2, assessors should receive relevant training.

Published data suggest that interobserver variation is significantly lower for FISH than for IHC. However, especially when developing a new service, care needs to be taken. The recommendation is that laboratories should perform validation studies by dual observer scoring when training new staff until there is concordance of 95%. For ISH validation purposes, each staff member should perform a minimum of 100 ISH tests in parallel with an experienced ISH scorer to attain a minimum concordance of 95% on diagnostic results (amplified and non-amplified status) and numerical results (for *HER2* and *CEP17*). Continued monitoring of scoring offers advantages in quality control and training, but is not a requirement.

Validation of standardised assay methodology

Test conditions should be optimised so that distinct moderate or strong membrane staining shows >90% concordance with HER2 ISH positive samples. This can be achieved by:

1. Dual HER2 IHC and ISH assay of a contemporary series of breast carcinomas (minimum 100 cases). Use of tumour tissue array blocks for this purpose may reduce costs. HER2 ISH assay can be confined to those cases demonstrating 3+, 2+ and 1+ membrane reactivity.
2. Alternatively, a series of carcinomas that have already been scored for HER2 IHC and ISH, from a reference laboratory, can be used.

Laboratories not able to standardise inhouse methodology should also consider using a commercial validated kit assay system.

ISH for *HER2* gene evaluation

ISH testing for *HER2* should meet the following criteria:

1. Comprehensive standardisation of methodology
2. Validated controls: the inclusion of a chromosome 17 probe to allow for correction of the *HER2* signal number for chromosome 17 aneusomy (seen in ~30% of cases and reportedly more common in tumours that show discrepant *HER2* expression and in tumours with discordant *HER2*-protein and gene copy number measurements) is recommended.

Case load

- ▶ Laboratories providing a testing service should be carrying out a minimum of 250 assays per year for immunohistochemical detection of *HER2*. This target level has been set to ensure higher consistency of assay quality and continuing expertise of assay providers.
- ▶ Centres with low numbers of cases (<250 per year) should consider using a reference laboratory service.
- ▶ Similar principles apply to ISH testing; it is recommended that laboratories testing < 100 cases per year (<150 including gastric carcinomas) consider referral of their workload to a reference laboratory. A smaller case load has been set for ISH assay, as it is generally accepted to be a more discriminant test at the positive-negative borderline, has greater ease of methodological standardisation, and has less observer variation.

General principles

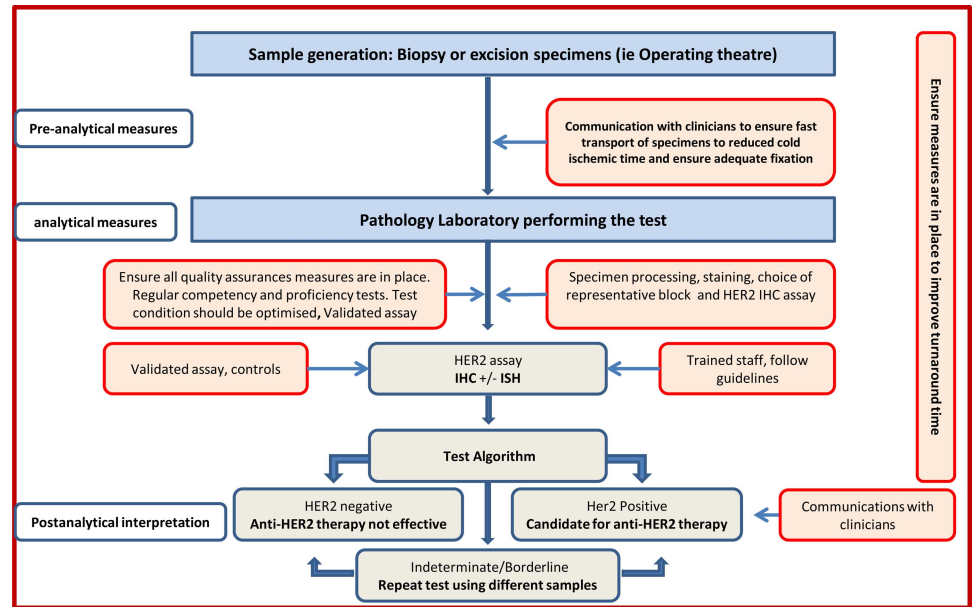
ISH should be performed on the same block as used for IHC. It is advisable that areas of the invasive carcinoma to be scored with ISH are located using a serial section stained with H&E and *HER2* IHC where available. Care should be taken to avoid areas of ductal carcinoma *in situ*, which can show amplification even when adjacent invasive tumour cells are negative.

Tissue digestion should be standardised to maintain nuclear morphology and should follow strict protocols. Some laboratories find it helpful to evaluate nuclear structure before hybridisation and to adjust digestion, where appropriate, to preserve nuclear integrity. This may be particularly valuable with difficult sections, bone biopsies, etc. Evaluation of sections before hybridisation can also improve efficiency and is recommended. Hybridisation and washing steps should be standardised. Guidance can be provided by the reference laboratories. Use of automated tissue processors and standardised commercial tissue digestion kits can improve consistency and should be considered.

It is recommended that commercially available validated probes are used. There are a number of commercial kits for *HER2* ISH using fluorescence and chromogen based detection systems and which are all acceptable, once properly validated.

Short turnaround times for *HER2* testing that do not delay the management of patients are recommended. Turnaround time is recognised to be variable between different centres, and can be addressed at the level of cancer networks and local services (figure 2). The National Institute for Care Excellence recommends that *HER2* status of the tumour be assessed and the results made available within 2 weeks to allow planning of systemic treatment by the MDT and that local arrangements and written clinical protocols are in place to ensure *HER2* status results are available within this time (<http://publications.nice.org.uk/breast-cancer-quality-standard-qs12/quality-statement-5-pathology-er-and-her2-status#quality-measure-5>). It is also important to emphasise the role of improved communication between pathologists/laboratories performing the test and clinicians to ensure proper handling of specimens (ie, prefixation time and fixation type), short turnaround time and proper interpretation of the test results.

Figure 2 Pathway for HER2 testing.



Audit

Regular and ongoing audit should be undertaken. Laboratories should audit their overall positive rate for HER2 using a combination of IHC and ISH. It is important to ensure that the sample size is adequate. Of note, the average proportion of invasive breast cancer cases recorded as HER2-positive is 14.5% (UK NEQAS ICC & ISH combined 5 year national audit data), with 14.3% of primary carcinomas and 18% of metastatic cases being HER2-positive (table 1). Of these cases approximately 22% cases are reported as borderline (2+) on IHC; of which 15–16% are reported as *HER2* ISH amplified.¹⁶ The proportion of HER2-positive breast cancers found in screen detected breast cancer cases is recognised to be lower than in symptomatic practice. Audit of HER2 assay turnaround time is also important as it is critical to patient pathway.

Quality assurance for HER2 receptor evaluation in the UK

All UK clinical laboratories using IHC or ISH to assess HER2 status as a predictive marker must participate in an appropriate external quality assurance programme, such as that run by the UK NEQAS ICC & ISH.

Communication

In the era of personalised medicine and the commonplace routine practice of MDT meeting for discussion of diagnosis and management of all patients with cancer in the UK, improved communication within the team is considered of paramount importance. Although for many years there has been

collaboration between pathologists and patient-facing clinicians in the UK, this guideline further emphasises the importance of this collaboration. Close communication with surgeons and radiologists is therefore advised in order to improve control over samples prefixation time and fixation type, and with oncologists to improve understanding of interpretation of the results. This is also expected to facilitate control over HER2 test turnaround time.

In conclusion, this update contains recommendations supported by a sufficient level of evidence on key points related to HER2 testing methodology, testing algorithm, interpretation of the results and the potential need for retesting. Laboratories offering a HER2 testing service and pathologists, oncologists and surgeons involved in test interpretation and clinical use should do their best to adhere to published guidelines and ensure accurate performance and interpretation of such tests.

Author affiliations

- ¹Department of Pathology, University of Nottingham and Nottingham University Hospitals NHS Trust, Nottingham, UK
- ²Division of Cancer Studies, Department of Research Oncology, King's College London, London, UK
- ³Department of Transformative Pathology, Ontario Institute of Cancer Research, Toronto, Canada
- ⁴Department of Histopathology, UK NEQAS for Immunocytochemistry, University College London, London, UK
- ⁵Department of Cellular Pathology, Birmingham Heartlands Hospital, Birmingham, UK
- ⁶Department of Histopathology, Bradford Royal Infirmary, Bradford, UK
- ⁷Department of Histopathology, Addenbrookes Hospital, Cambridge, UK
- ⁸Department of Histopathology, Academic Unit of Pathology, St James's University Hospital, Leeds, UK
- ⁹Department of Histopathology, Countess of Chester Hospital, Chester, UK

Correction notice A sentence under Scoring ISH section has been corrected since published Online First.

Collaborators Dr R Adamson, Dr Al-Sam, Dr M Ashton, Dr N Anderson, Prof G Callagy, Dr S Cawthorne, Dr D Coleman, Dr N S Dallimore, Dr R Deb, Dr D Fish, Dr A Girling, Dr S Hales, Mr K M Horgan, Dr M Howe, Mrs S Kodikara, Mr K Lea, Prof L Jones, Dr G McCusker, Dr E Mallon, Dr D M Parham, Dr N Patel, Prof J Patnick, Dr C M Quinn, Dr D Rowlands, S J Sellars, Prof T J Stephenson, Dr C A Wells and Prof R Wilson.

Contributors EAR and IOE prepared the draft. SEP and JMSB contributed to the initial drafting. All coauthors contributed to the final version of the manuscript and approved it.

Competing interests None.

Table 1 Proportion of HER2-positive primary and metastatic breast cancers*

	0	1+	2+	3+	ISH +	Overall HER2-positive
Overall (%)	32.8	33.1	21.8	11.6	14.7	14.5
Primary carcinoma (%)	32.6	33.7	21.8	11.5	14.6	14.3
Metastatic lesion (%)	36.7	27.2	21.1	14.9	15.8	18.0*

*UK NEQAS ICC & ISH combined 5 year national audit data (unpublished data). ISH, *in situ hybridisation*; ISH+, proportion of 2+ carcinomas that are amplified; UK NEQAS ICC & ISH, UK National External Quality Assessment Scheme for Immunocytochemistry and *In Situ Hybridisation*.

Provenance and peer review Not commissioned; externally peer reviewed.

Open Access This is an Open Access article distributed in accordance with the Creative Commons Attribution Non Commercial (CC BY-NC 4.0) license, which permits others to distribute, remix, adapt, build upon this work non-commercially, and license their derivative works on different terms, provided the original work is properly cited and the use is non-commercial. See: <http://creativecommons.org/licenses/by-nc/4.0/>

REFERENCES

- Slamon DJ, Godolphin W, Jones LA, *et al.* Studies of the HER-2/neu proto-oncogene in human breast and ovarian cancer. *Science* 1989;244:707–12.
- Ross JS, Fletcher JA. HER-2/neu (c-erb-B2) gene and protein in breast cancer. *Am J Clin Pathol* 1999;112(1 Suppl 1):S53–67.
- Gianni L, Dafni U, Gelber RD, *et al.* Treatment with trastuzumab for 1 year after adjuvant chemotherapy in patients with HER2-positive early breast cancer: a 4-year follow-up of a randomised controlled trial. *Lancet Oncol* 2011;12:236–44.
- Piccart-Gebhart MJ, Procter M, Leyland-Jones B, *et al.* Trastuzumab after adjuvant chemotherapy in HER2-positive breast cancer. *N Engl J Med* 2005;353:1659–72.
- Gianni L, Eiermann W, Semiglazov V, *et al.* Neoadjuvant chemotherapy with trastuzumab followed by adjuvant trastuzumab versus neoadjuvant chemotherapy alone, in patients with HER2-positive locally advanced breast cancer (the NOAH trial): a randomised controlled superiority trial with a parallel HER2-negative cohort. *Lancet* 2010;375:377–84.
- Geyer CE, Forster J, Lindquist D, *et al.* Lapatinib plus capecitabine for HER2-positive advanced breast cancer. *N Engl J Med* 2006;355:2733–43.
- Baselga J, Bradbury I, Eidtmann H, *et al.* Lapatinib with trastuzumab for HER2-positive early breast cancer (NeoALTTO): a randomised, open-label, multicentre, phase 3 trial. *Lancet* 2012;379:633–40.
- Di Leo A, Gomez HL, Aziz Z, *et al.* Phase III, double-blind, randomized study comparing lapatinib plus paclitaxel with placebo plus paclitaxel as first-line treatment for metastatic breast cancer. *J Clin Oncol* 2008;26:5544–52.
- Seidman AD, Berry D, Cirrincione C, *et al.* Randomized phase III trial of weekly compared with every-3-weeks paclitaxel for metastatic breast cancer, with trastuzumab for all HER-2 overexpressors and random assignment to trastuzumab or not in HER-2 nonoverexpressors: final results of Cancer and Leukemia Group B protocol 9840. *J Clin Oncol* 2008;26:1642–9.
- Untch M, Rezaei M, Loibl S, *et al.* Neoadjuvant treatment with trastuzumab in HER2-positive breast cancer: results from the GeparQuattro study. *J Clin Oncol* 2010;28:2024–31.
- Wolff AC, Hammond ME, Schwartz JN, *et al.* American Society of Clinical Oncology/College of American Pathologists guideline recommendations for human epidermal growth factor receptor 2 testing in breast cancer. *J Clin Oncol* 2007;25:118–45.
- Perez EA, Suman VJ, Davidson NE, *et al.* HER2 testing by local, central, and reference laboratories in specimens from the North Central Cancer Treatment Group N9831 intergroup adjuvant trial. *J Clin Oncol* 2006;24:3032–8.
- Taucher S, Rudas M, Mader RM, *et al.* Prognostic markers in breast cancer: the reliability of HER2/neu status in core needle biopsy of 325 patients with primary breast cancer. *Wien Klin Wochenschr* 2004;116:26–31.
- Ellis IO, Bartlett J, Dowsett M, *et al.* Best Practice No 176: updated recommendations for HER2 testing in the UK. *J Clin Pathol* 2004;57:233–7.
- Pathology reporting of breast disease. A Joint Document Incorporating the Third Edition of the NHS Breast Screening Programme's Guidelines for Pathology Reporting in Breast Cancer Screening and the Second Edition of The Royal College of Pathologists' Minimum Dataset for Breast Cancer Histopathology. January 2005. NHSBSP Pub. No 58 p.
- Walker RA, Bartlett JM, Dowsett M, *et al.* HER2 testing in the UK: further update to recommendations. *J Clin Pathol* 2008;61:818–24.
- Hammond ME, Hayes DF, Dowsett M, *et al.* American Society of Clinical Oncology/College Of American Pathologists guideline recommendations for immunohistochemical testing of estrogen and progesterone receptors in breast cancer. *J Clin Oncol* 2010;28:2784–95.
- Carlson RW, Moench SJ, Hammond ME, *et al.* HER2 testing in breast cancer: NCCN Task Force report and recommendations. *J Natl Compr Canc Netw* 2006;4(Suppl 3):S1–22; quiz S3–4.
- Middleton LP, Price KM, Puig P, *et al.* Implementation of American Society of Clinical Oncology/College of American Pathologists HER2 Guideline Recommendations in a tertiary care facility increases HER2 immunohistochemistry and fluorescence in situ hybridization concordance and decreases the number of inconclusive cases. *Arch Pathol Lab Med* 2009;133:775–80.
- Chen X, Yuan Y, Gu Z, *et al.* Accuracy of estrogen receptor, progesterone receptor, and HER2 status between core needle and open excision biopsy in breast cancer: a meta-analysis. *Breast Cancer Res Treat* 2012;134:957–67.
- Wolff AC, Hammond ME, Hicks DG, *et al.* Recommendations for human epidermal growth factor receptor 2 testing in breast cancer: American Society of Clinical Oncology/College of American Pathologists clinical practice guideline update. *J Clin Oncol* 2013;31:3997–4013.
- Arnedos M, Nerurkar A, Osin P, *et al.* Discordance between core needle biopsy (CNB) and excisional biopsy (EB) for estrogen receptor (ER), progesterone receptor (PgR) and HER2 status in early breast cancer (EBC). *Ann Oncol* 2009;20:1948–52.
- Lee AH, Key HP, Bell JA, *et al.* Concordance of HER2 status assessed on needle core biopsy and surgical specimens of invasive carcinoma of the breast. *Histopathology* 2012;60:880–4.
- Greer LT, Rosman M, Mylander WC, *et al.* Does breast tumor heterogeneity necessitate further immunohistochemical staining on surgical specimens? *J Am Coll Surg* 2013;216:239–51.
- Durgapal P, Mathur SR, Kalamuddin M, *et al.* Assessment of her-2/neu status using immunocytochemistry and fluorescence in situ hybridization on fine-needle aspiration cytology smears: Experience from a tertiary care centre in india. *Diagn Cytopathol* 2014;42:726–31.
- Zustin J, Boddin K, Tsourlakis MC, *et al.* HER-2/neu analysis in breast cancer bone metastases. *J Clin Pathol* 2009;62:542–6.
- Penault-Llorca F, Coudry RA, Hanna WM, *et al.* Experts' opinion: Recommendations for retesting breast cancer metastases for HER2 and hormone receptor status. *Breast* 2013;22:200–2.
- Lee AH, Key HP, Bell JA, *et al.* The effect of delay in fixation on HER2 expression in invasive carcinoma of the breast assessed with immunohistochemistry and in situ hybridisation. *J Clin Pathol* 2014;67:573–5.
- Lundgaard Hansen B, Winther H, Moller K. Excessive section drying of breast cancer tissue prior to deparaffinisation and antigen retrieval causes a loss in HER2 immunoreactivity. *Immunocytochemistry* 2008;6:Run 76. 117–22.
- Press MF, Sauter G, Bernstein L, *et al.* Diagnostic evaluation of HER-2 as a molecular target: an assessment of accuracy and reproducibility of laboratory testing in large, prospective, randomized clinical trials. *Clin Cancer Res* 2005;11:6598–607.
- Pauletti G, Dandekar S, Rong H, *et al.* Assessment of methods for tissue-based detection of the HER-2/neu alteration in human breast cancer: a direct comparison of fluorescence in situ hybridization and immunohistochemistry. *J Clin Oncol* 2000;18:3651–64.
- Sauter G, Lee J, Bartlett JM, *et al.* Guidelines for human epidermal growth factor receptor 2 testing: biologic and methodologic considerations. *J Clin Oncol* 2009;27:1323–33.
- Arnould L, Roger P, Macgrogan G, *et al.* Accuracy of HER2 status determination on breast core-needle biopsies (immunohistochemistry, FISH, CISH and SISH vs FISH). *Mod Pathol* 2012;25:675–82.
- Risio M, Casorzo L, Redana S, *et al.* HER2 gene-amplified breast cancers with monosomy of chromosome 17 are poorly responsive to trastuzumab-based treatment. *Oncol Rep* 2005;13:305–9.
- Perez EA, Reinholz MM, Hillman DW, *et al.* HER2 and chromosome 17 effect on patient outcome in the N9831 adjuvant trastuzumab trial. *J Clin Oncol* 2010;28:4307–15.
- Hanna WM, Ruschoff J, Bilous M, *et al.* HER2 in situ hybridization in breast cancer: clinical implications of polysomy 17 and genetic heterogeneity. *Mod Pathol* 2014;27:4–18.
- Bartlett AL, Starczyński J, Robson T, *et al.* Heterogeneous HER2 gene amplification: impact on patient outcome and a clinically relevant definition. *Am J Clin Pathol* 2011;136:266–74.
- Ohlschlegel C, Zahel K, Kradolfer D, *et al.* HER2 genetic heterogeneity in breast carcinoma. *J Clin Pathol* 2011;64:1112–16.



Updated UK Recommendations for HER2 assessment in breast cancer

Emad A Rakha, Sarah E Pinder, John M S Bartlett, Merdol Ibrahim, Jane Starczynski, Pauline J Carder, Elena Provenzano, Andrew Hanby, Sally Hales, Andrew H S Lee and Ian O Ellis

J Clin Pathol 2015 68: 93-99 originally published online December 8, 2014

doi: 10.1136/jclinpath-2014-202571

Updated information and services can be found at:
<http://jcp.bmj.com/content/68/2/93>

These include:

References

This article cites 37 articles, 18 of which you can access for free at:
<http://jcp.bmj.com/content/68/2/93#BIBL>

Open Access

This is an Open Access article distributed in accordance with the Creative Commons Attribution Non Commercial (CC BY-NC 4.0) license, which permits others to distribute, remix, adapt, build upon this work non-commercially, and license their derivative works on different terms, provided the original work is properly cited and the use is non-commercial. See: <http://creativecommons.org/licenses/by-nc/4.0/>

Email alerting service

Receive free email alerts when new articles cite this article. Sign up in the box at the top right corner of the online article.

Topic Collections

Articles on similar topics can be found in the following collections

[Open access](#) (97)
[Breast cancer](#) (493)
[Molecular genetics](#) (341)

Notes

To request permissions go to:
<http://group.bmj.com/group/rights-licensing/permissions>

To order reprints go to:
<http://journals.bmj.com/cgi/reprintform>

To subscribe to BMJ go to:
<http://group.bmj.com/subscribe/>